



# Center Promenade

Ventura, CA

**NOW FIBER/CABLE READY**

**Center Promenade** is a seven-building office campus totaling **180,576 square feet**. The campus offers a unique park like setting with efficient floor plates that can accommodate office users of all sizes. In addition, the property is conveniently located to a number of amenities including the Victoria Plaza, **Ventura Gateway Center** and **Pacific View Mall**. Center Promenade is located just east of the Ventura County Government Center with immediate access to the Ventura (101) and Santa Paula (126) Freeways.

---

6401 Telephone Rd :: 6633 Telephone Rd :: 6477 Telephone Rd :: 6555 Telephone Rd  
1001 Partridge Drive :: 1000 South Hill Rd, Ventura, CA :: 1050 South Hill Rd

**CBRE**

**OMNINET**



- Financially secure ownership
- Responsive property management
- Superior customer collaboration
- Brokerage friendly approach
- Dedicated to providing the highest level of service

## Highlights:

- Small suite and full floor availability
- Fiber/Cable ready Business Park
- Beautifully landscaped campus environment
- Adjacent to the Ventura County Government Center.
- 12 acres of business activity
- Close proximity to amenities and retail establishments
- Centrally located on Telephone Road, with easy access to the Ventura (Hwy 101) and Santa Paula (126) Freeways



## Availabilities:

6633 Telephone Rd	SF	Contiguous To	Rate	Available	Notes
Suite 130	1,051 SF		\$2.25	Now	
1000 South Hill Rd	SF	Contiguous To	Rate	Available	Notes
Suite 110	1,321 SF		\$2.25	Now	
Suite 330	1,065 SF		\$2.25	Now	
1001 Partridge Drive	SF	Contiguous To	Rate	Available	Notes
Suite 105	1,181 SF	Suite 110	\$2.25	Now	2 Private Offices, Conference Room, Reception
Suite 110	2,274 SF	Suite 105	\$2.25	Now	4 Offices, Confernece Room
Suite 200	3,190 SF		\$2.25	Now	Shell Condition
Suite 220	5,827 SF		\$2.25	1/1/20	
Suite 230	1,800 SF		\$2.25	Now	Shell Condition
Suite 360/365	7,501 SF		\$2.25	1/1/20	
6477 Telephone Rd	SF	Contiguous To	Rate	Available	Notes
Suite 5	1,501 SF		\$2.25	Now	Suite Has Direct Access To Parking
6555 Telephone Rd	SF	Contiguous To	Rate	Available	Notes
Suite 6	1,162 SF		\$2.25	Now	3 Private Offices
1050 South Hill Rd	SF	Contiguous To	Rate	Available	Notes
No Availabilities					

# 6633 TELEPHONE RD

## FIRST FLOOR

Suite 130  
1,051 SF



AVAILABLE  LEASED

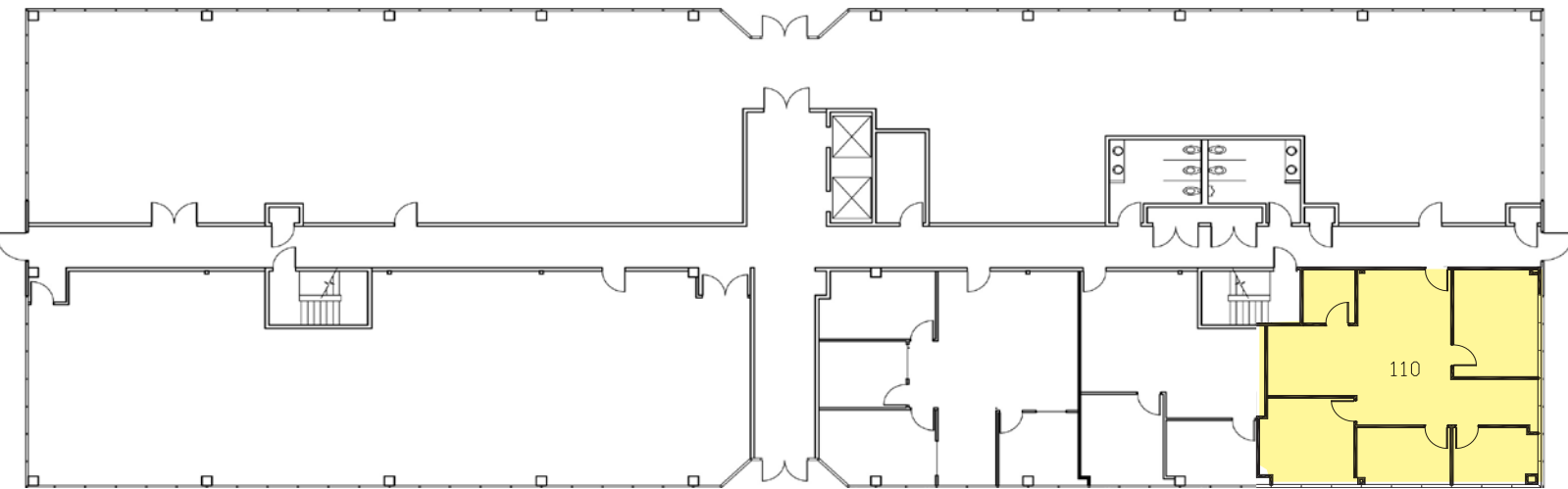
**Bill Clark**  
Lic. 01315127  
+1 805 288 4677  
bill.clark@cbre.com

**John La Spada**  
Lic. 01415299  
+1 805 288 4678  
john.laspada@cbre.com

**CBRE, Inc.**  
2761 Park View Court  
Oxnard, CA 93036

# 1000 SOUTH HILL RD

## FIRST FLOOR



Suite 110  
1,321 SF

■ AVAILABLE    ■ LEASED

**Bill Clark**  
Lic. 01315127  
+1 805 288 4677  
bill.clark@cbre.com

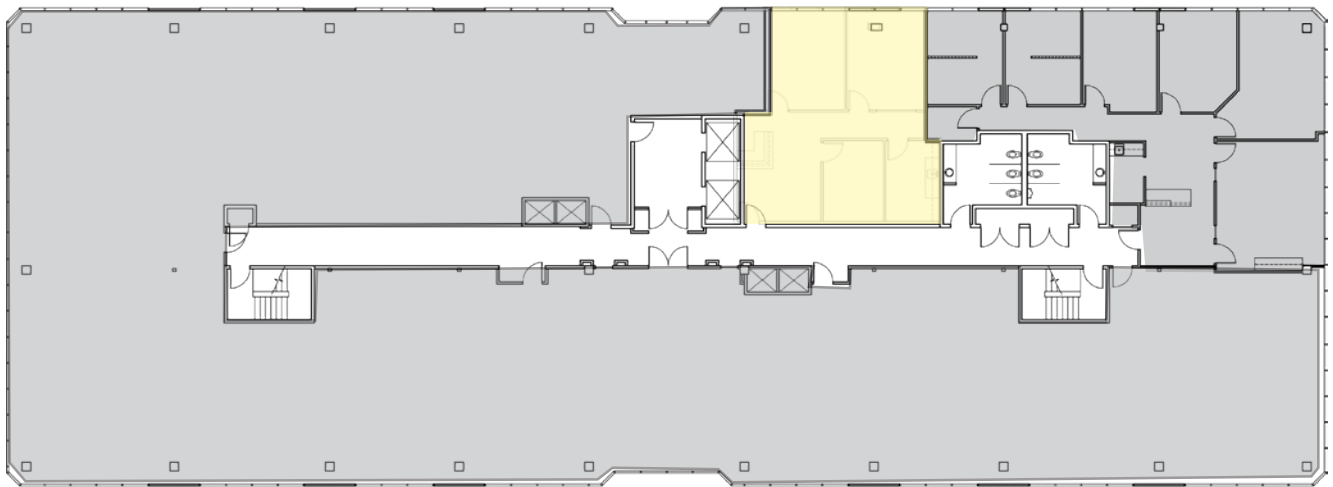
**John La Spada**  
Lic. 01415299  
+1 805 288 4678  
john.laspada@cbre.com



**CBRE, Inc.**  
2761 Park View Court  
Oxnard, CA 93036

# 1000 SOUTH HILL RD

## THIRD FLOOR

Suite 330  
1,065 SF



 AVAILABLE  LEASED

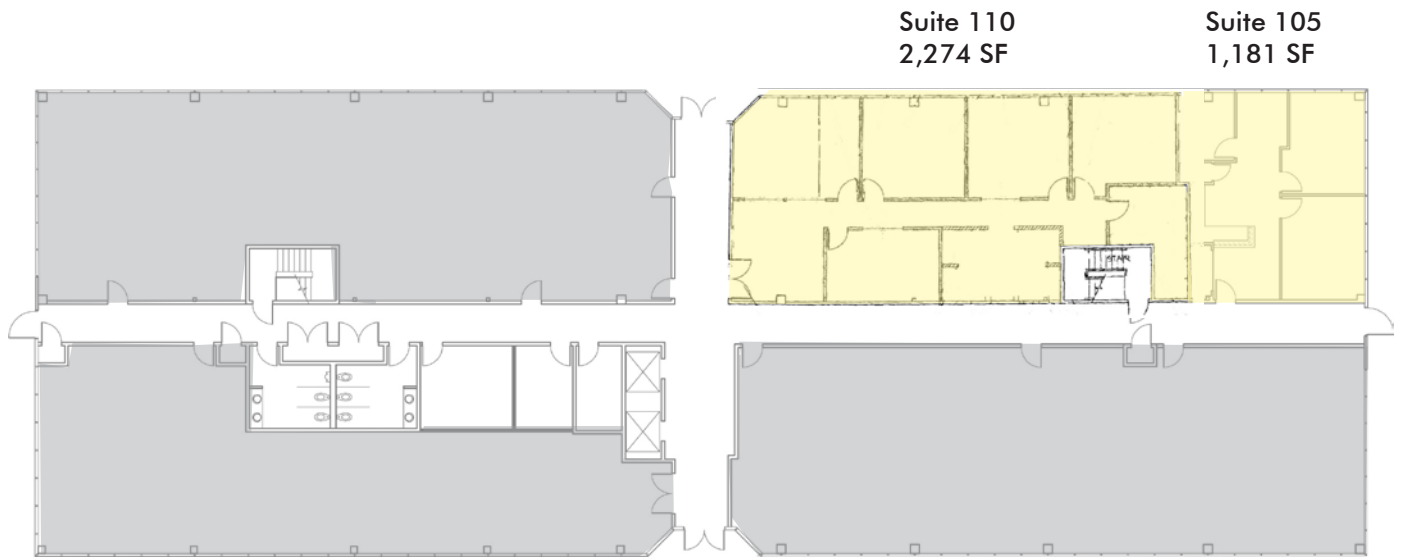
**Bill Clark**  
Lic. 01315127  
+1 805 288 4677  
bill.clark@cbre.com

**John La Spada**  
Lic. 01415299  
+1 805 288 4678  
john.laspada@cbre.com

**CBRE, Inc.**  
2761 Park View Court  
Oxnard, CA 93036

# 1001 PARTRIDGE DR

## FIRST FLOOR



Suite 110  
2,274 SF

Suite 105  
1,181 SF

AVAILABLE  LEASED

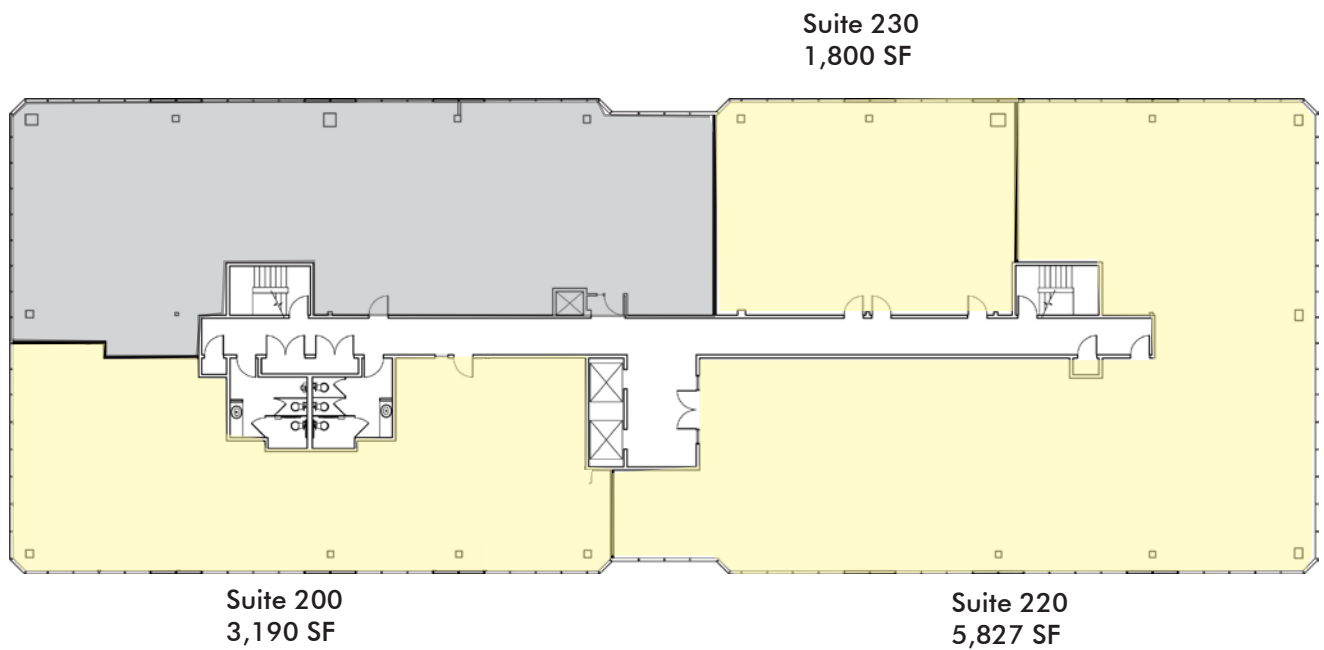
**Bill Clark**  
Lic. 01315127  
+1 805 288 4677  
bill.clark@cbre.com

**John La Spada**  
Lic. 01415299  
+1 805 288 4678  
john.laspada@cbre.com

**CBRE, Inc.**  
2761 Park View Court  
Oxnard, CA 93036

# 1001 PARTRIDGE DR

## SECOND FLOOR



AVAILABLE  LEASED

**Bill Clark**  
Lic. 01315127  
+1 805 288 4677  
bill.clark@cbre.com

**John La Spada**  
Lic. 01415299  
+1 805 288 4678  
john.laspada@cbre.com

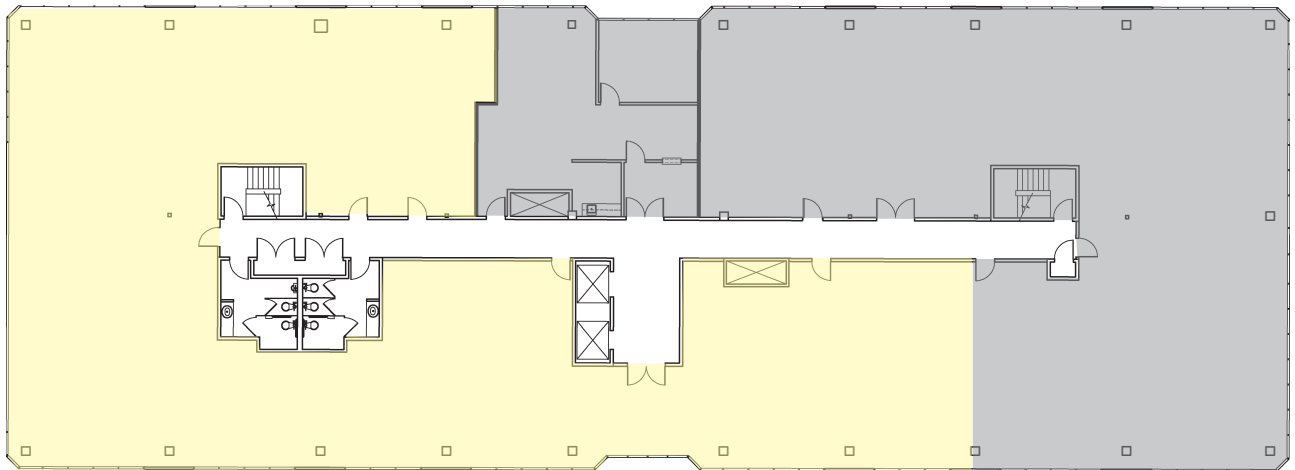
**CBRE, Inc.**  
2761 Park View Court  
Oxnard, CA 93036



# 1001 PARTRIDGE DR

## THIRD FLOOR

Suite 360 & 365  
7,501 SF



AVAILABLE  LEASED

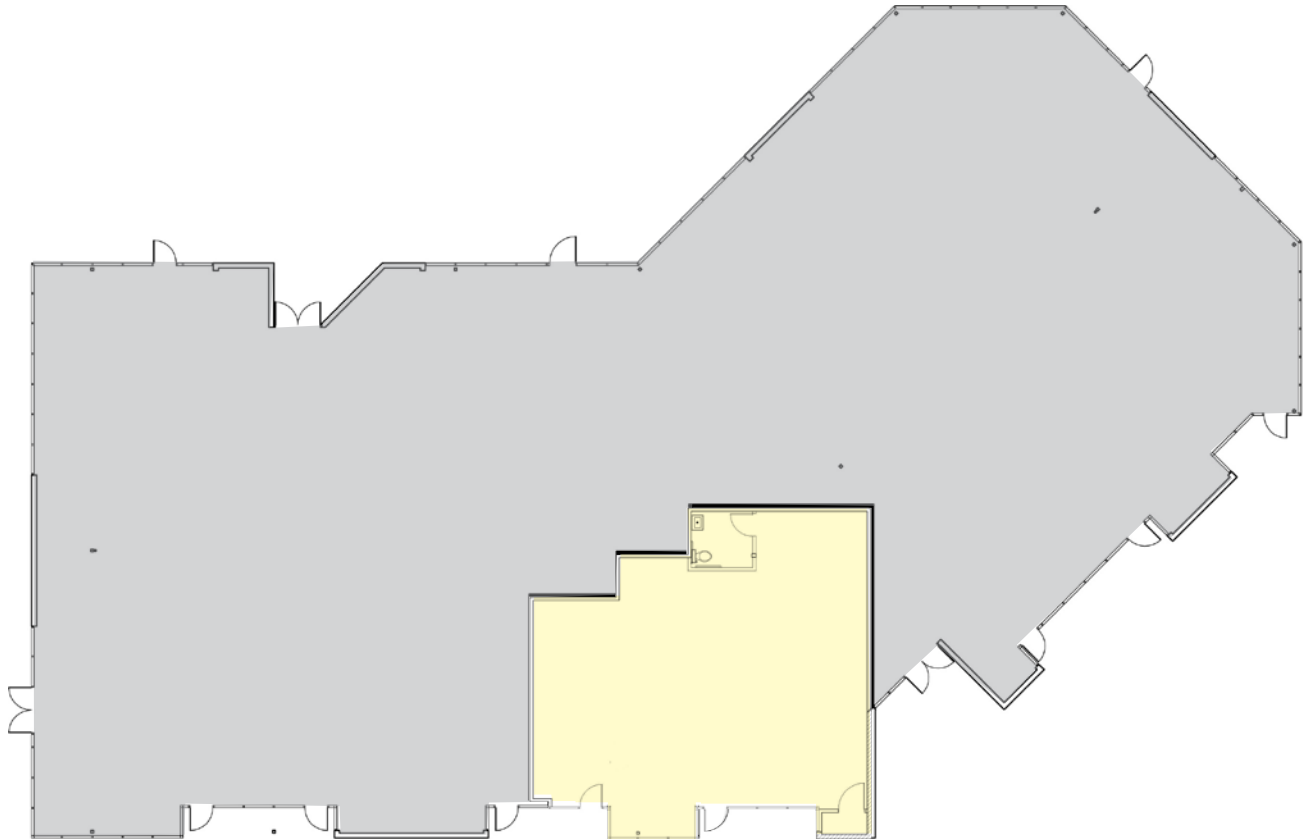
**Bill Clark**  
Lic. 01315127  
+1 805 288 4677  
bill.clark@cbre.com

**John La Spada**  
Lic. 01415299  
+1 805 288 4678  
john.laspada@cbre.com

**CBRE, Inc.**  
2761 Park View Court  
Oxnard, CA 93036

## 6477 TELEPHONE RD

### FIRST FLOOR



Suite 5  
1,501 SF

AVAILABLE  LEASED

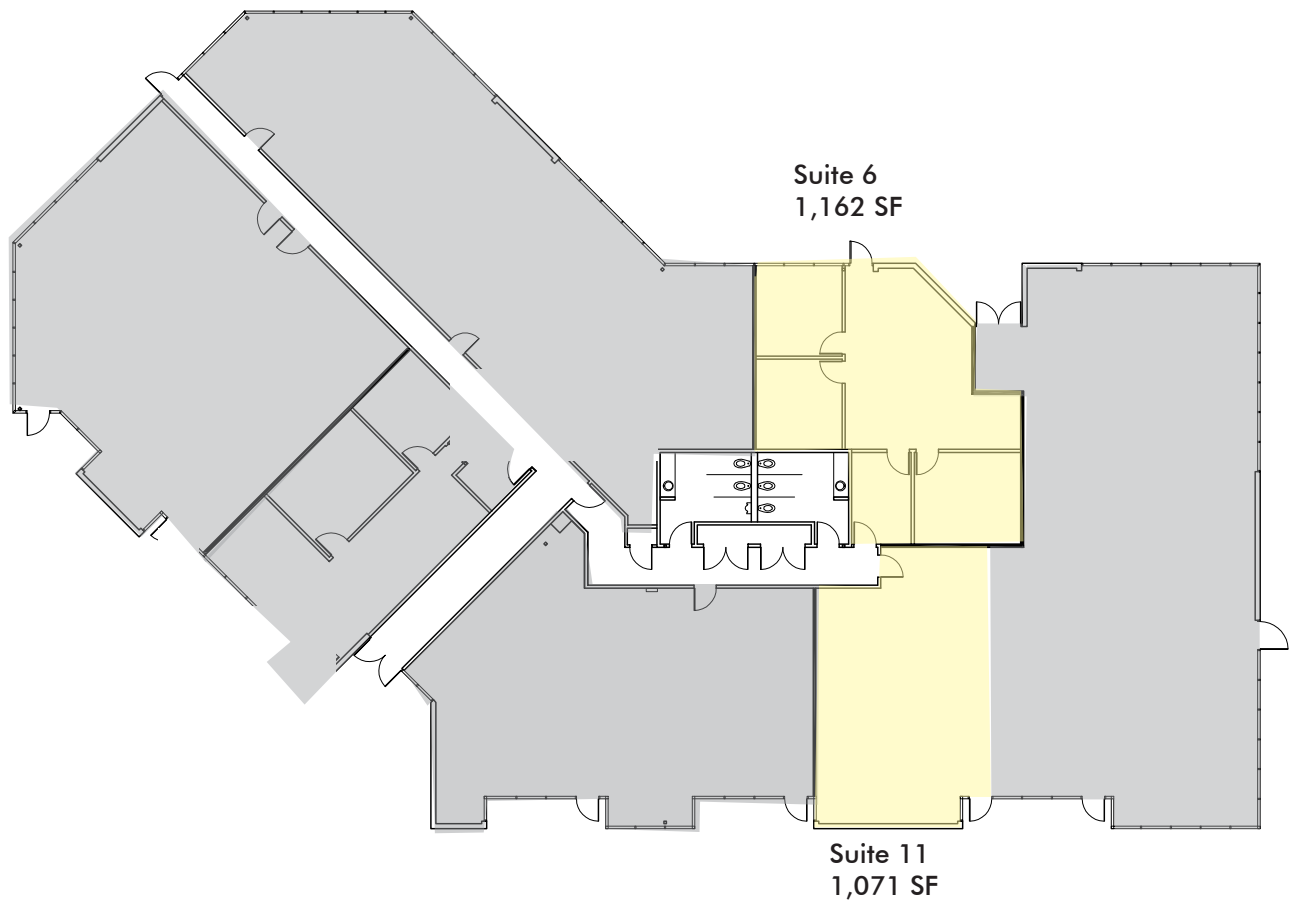
**Bill Clark**  
Lic. 01315127  
+1 805 288 4677  
bill.clark@cbre.com

**John La Spada**  
Lic. 01415299  
+1 805 288 4678  
john.laspada@cbre.com

**CBRE, Inc.**  
2761 Park View Court  
Oxnard, CA 93036

# 6555 TELEPHONE RD

## FIRST FLOOR



AVAILABLE  LEASED

**Bill Clark**  
Lic. 01315127  
+1 805 288 4677  
bill.clark@cbre.com

**John La Spada**  
Lic. 01415299  
+1 805 288 4678  
john.laspada@cbre.com

**CBRE, Inc.**  
2761 Park View Court  
Oxnard, CA 93036

# CENTER PROMENADE

Ventura, CA



## CONTACT US

---

**Bill Clark**

Lic. 01315127  
+1 805 288 4677  
bill.clark@cbre.com

**John La Spada**

Lic. 01415299  
+1 805 288 4678  
john.laspada@cbre.com

**CBRE, Inc.**

2761 Park View Court  
Oxnard, CA 93036

OMNINET

CBRE