

Park 355 I Business Park

2145 Internationale Pkwy
Woodridge, IL 60517

28,346 SF Available



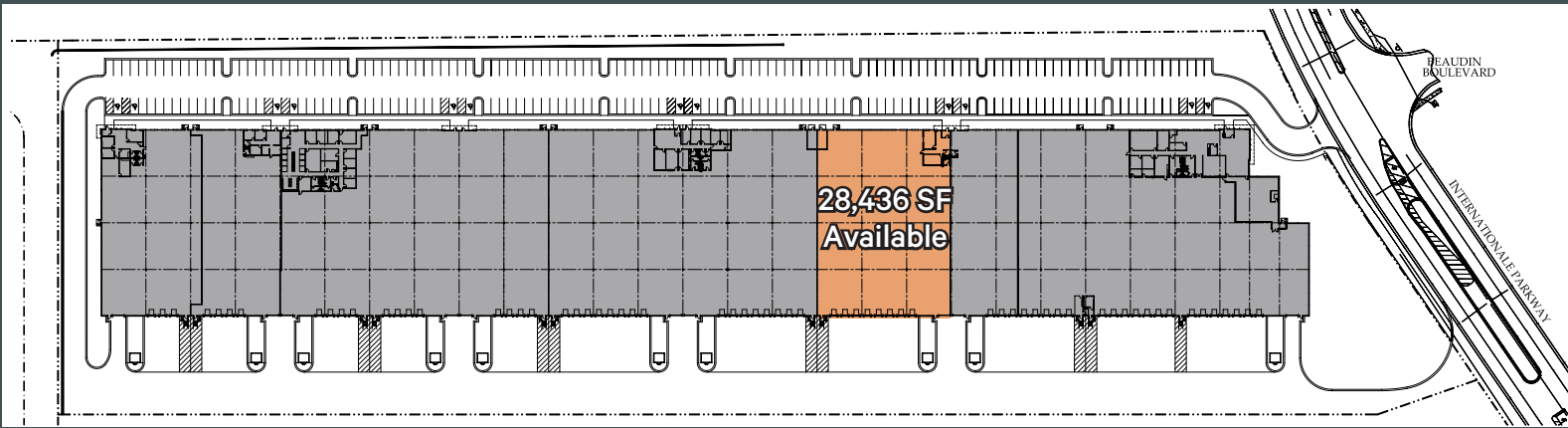
Property Features

- + Total Building Size: 256,182 SF
- + Available Size: 28,346 SF
- + Land Size: 13.09 Acres
- + Loading: 8 Exterior Dock Doors
- + Drive-in Doors: 1
- + Ceiling Height: 30'
- + Office Size: 1,296 SF
- + Column Spacing: 50' x 48'
- + Sprinklers: ESFR
- + Built in 2008
- + Immediate access to I-55 & I-355
- + Sublease through September 2027
- + Pricing: Subject to Offer

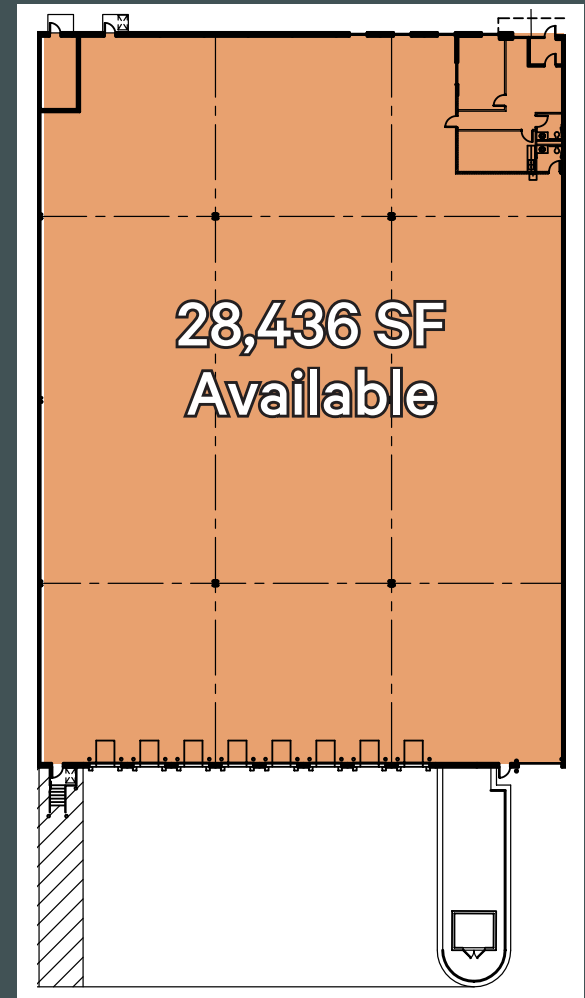
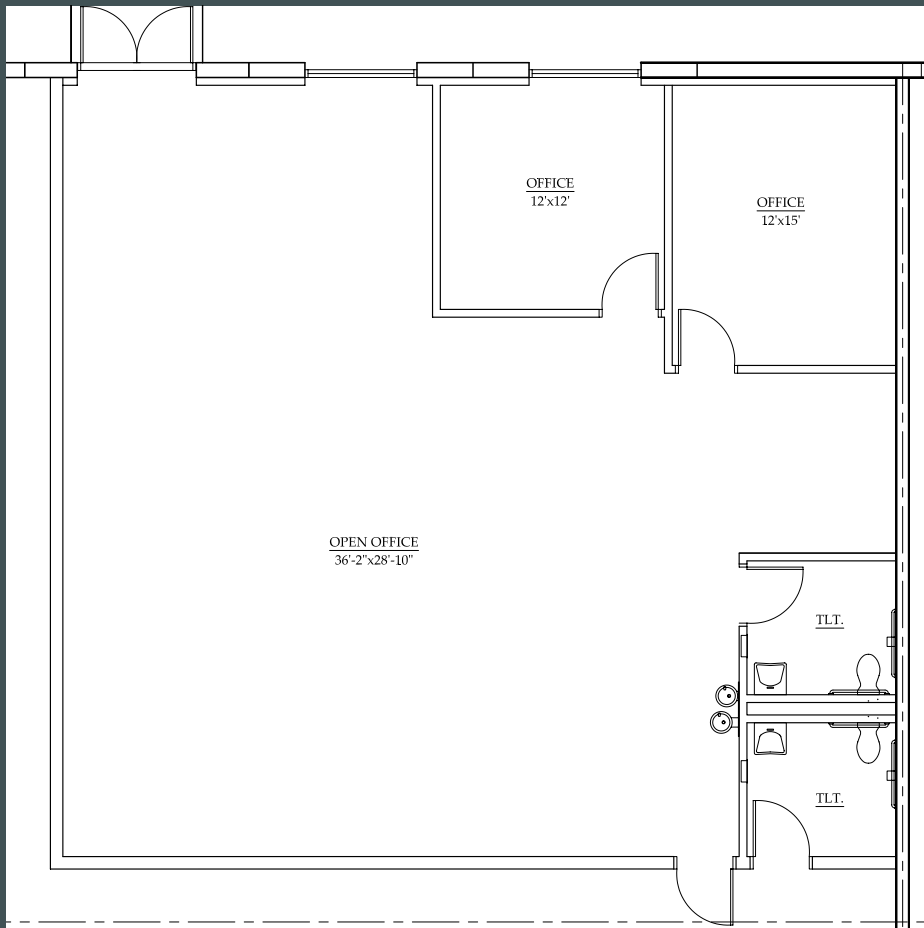
Park 355 I Business Park

2145 Internationale Pkwy | Woodridge, IL 60517

For Sublease



Floor Plan



Space Plan

CBRE

2145 Internationale Pkwy | Woodridge, IL 60517

The map shows the Chicago metropolitan area with the proposed site highlighted in orange and labeled 'SITE' in green. The site is located near the intersection of Interstate 55 and Interstate 88, south of Aurora and west of Joliet. Major highways and cities are labeled, including Mundelein, Buffalo Grove, Algonquin, Rogers Park, Chicago, Oak Lawn, Orland Park, Joliet, Aurora, Romeoville, and Plano. The map also shows O'Hare International Airport, Midway International Airport, and Gary/Chicago International Airport. A green circle highlights the area around the site, and a green arrow points from the site to the inset image.



Dylan DeMaio

Senior Associate
+1 224 938 5260
dylan.demaio@cbre.com

David Prell

Executive Vice President
+1 773 405 9093
david.prell@cbre.com

CBRE