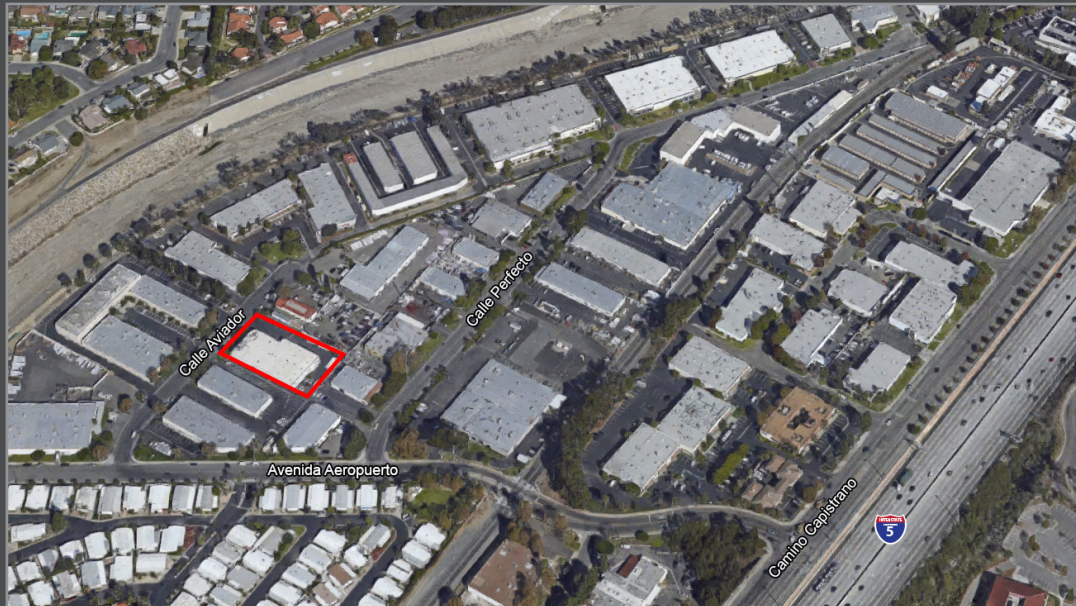


# SAN JUAN CAPISTRANO MULTI-TENANT SPACE AVAILABLE FOR LEASE



SAN JUAN CAPISTRANO BUSINESS PARK  
33046 CALLE AVIADOR

**VISIT WEBSITE:**  
**WWW.TURNERSANJUAN.COM**

For more information, please contact:



**TIM WALKER**  
Cell: 949.230.7649  
timwalker@lee-associates.com  
DRE #: 01218076

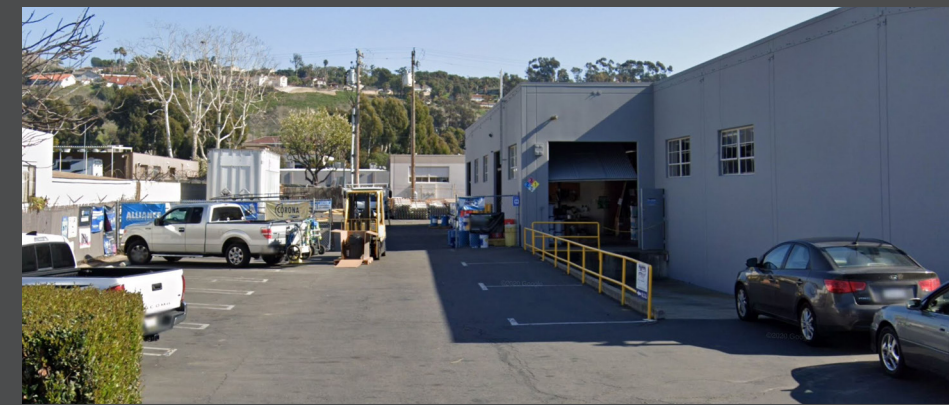


**PITZER GILLS**  
Cell: 727-366-5825  
pgills@lee-associates.com  
DRE #: 02254884



**LEE & ASSOCIATES® - NEWPORT BEACH** | Corporate ID#01197433  
100 Bayview Circle, Suite 600, Newport Beach, California 92660  
☎ 949.724.1000 | 📠 949.862.9048 | [www.lee-associates.com](http://www.lee-associates.com)

DISCLAIMER: The information contained herein has been obtained from the property owner or other third party and is provided to you without verification as to accuracy. We (Lee & Associates, its brokers, employees, agents, principals, officers, directors and affiliates) make no warranty or representation regarding the information, property, or transaction. You and your attorneys, advisors and clients should conduct your own investigation of the property and transaction.



# SAN JUAN CAPISTRANO INDUSTRIAL BUILDING AVAILABLE FOR LEASE



## PROPERTY FEATURES:

- ±16,375 SF Industrial Building
- ±1,800 SF of Office
- Large Yard
- DH Loading
- Mezzanine Office is Not Part of the RSF

**VISIT WEBSITE:**  
**WWW.TURNERSANJUAN.COM**

For more information, please contact:



**TIM WALKER**

Cell: 949.230.7649  
timwalker@lee-associates.com  
DRE #: 01218076

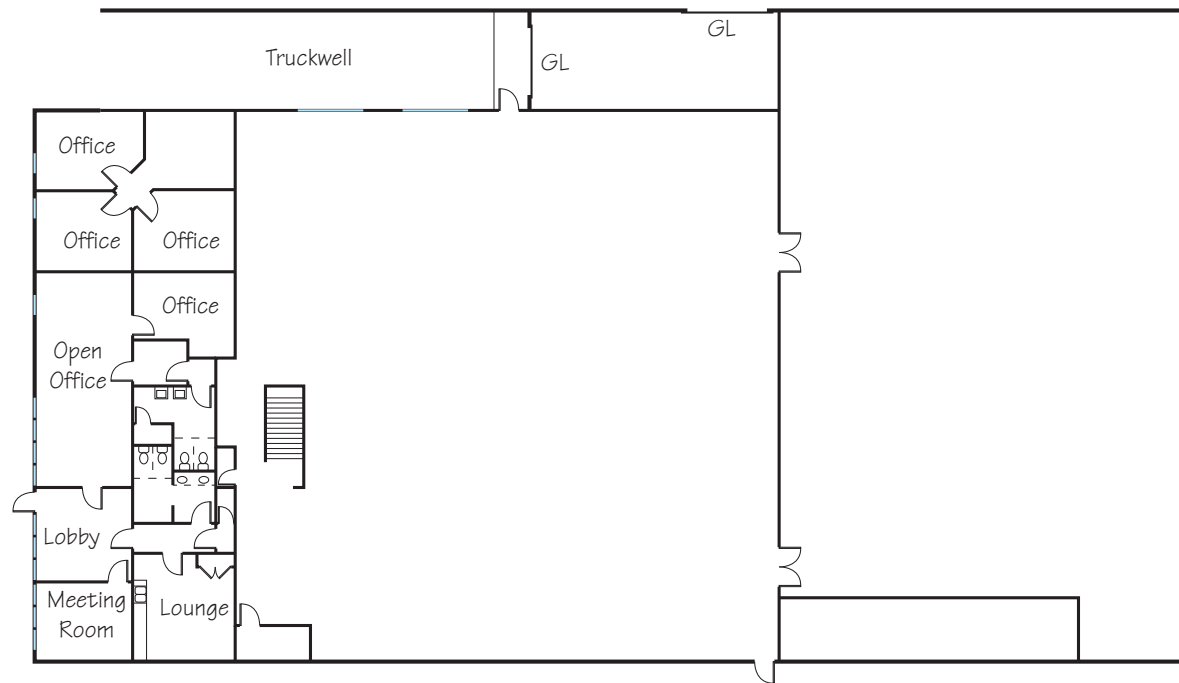


**PITZER GILLS**

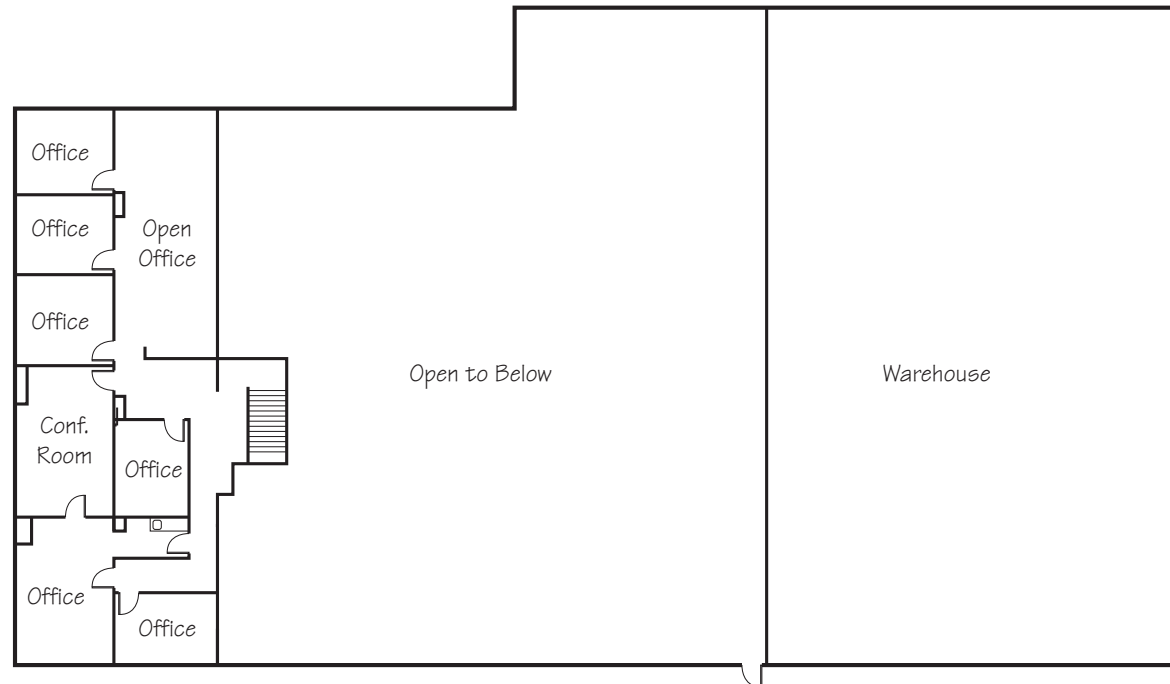
Cell: 727-366-5825  
pgills@lee-associates.com  
DRE #: 02254884



**LEE & ASSOCIATES® - NEWPORT BEACH** | Corporate ID#01197433  
100 Bayview Circle, Suite 600, Newport Beach, California 92660  
☎ 949.724.1000 | 📠 949.862.9048 | [www.lee-associates.com](http://www.lee-associates.com)



**FIRST  
FLOOR**



**SECOND  
FLOOR**



**LEE & ASSOCIATES® - NEWPORT BEACH** | Corporate ID#01197433  
100 Bayview Circle, Suite 600, Newport Beach, California 92660  
☎ 949.724.1000 | 📠 949.862.9048 | [www.lee-associates.com](http://www.lee-associates.com)

**DISCLAIMER:** The information contained herein has been obtained from the property owner or other third party and is provided to you without verification as to accuracy. We (Lee & Associates, its brokers, employees, agents, principals, officers, directors and affiliates) make no warranty or representation regarding the information, property, or transaction. You and your attorneys, advisors and consultants should conduct your own investigation of the property and transaction.



Calle Aviador

Calle Perfecto

← DIRECT ACCESS VIA CALLE PERFECTO

Avenida Aeropuerto

For more information, please contact:



**TIM WALKER**  
Cell: 949.230.7649  
timwalker@lee-associates.com  
DRE #: 01218076



**PITZER GILLS**  
Cell: 727-366-5825  
pgills@lee-associates.com  
DRE #: 02254884



**LEE & ASSOCIATES® - NEWPORT BEACH** | Corporate ID#01197433  
100 Bayview Circle, Suite 600, Newport Beach, California 92660  
☎ 949.724.1000 | 📠 949.862.9048 | [www.lee-associates.com](http://www.lee-associates.com)

**VISIT WEBSITE:**  
**[WWW.TURNERSANJUAN.COM](http://WWW.TURNERSANJUAN.COM)**

**DISCLAIMER:** The information contained herein has been obtained from the property owner or other third party and is provided to you without verification as to accuracy. We (Lee & Associates, its brokers, employees, agents, principals, officers, directors and affiliates) make no warranty or representation regarding the information, property, or transaction. You and your attorneys, advisors and consultants should conduct your own investigation of the property and transaction.