

# FAIRWAY PARK BUSINESS CENTER

2517 – 2523 FAIRWAY PARK DR & 10606 HEMPSTEAD RD  
HOUSTON, TX 77092



**NORTHWEST HOUSTON  
SUBMARKET**



**GREAT ACCESS TO I-610,  
US-290, AND HEMPSTEAD**



**14' AVERAGE CLEAR HEIGHT**



**TENANT-CONTROLLED HVAC**



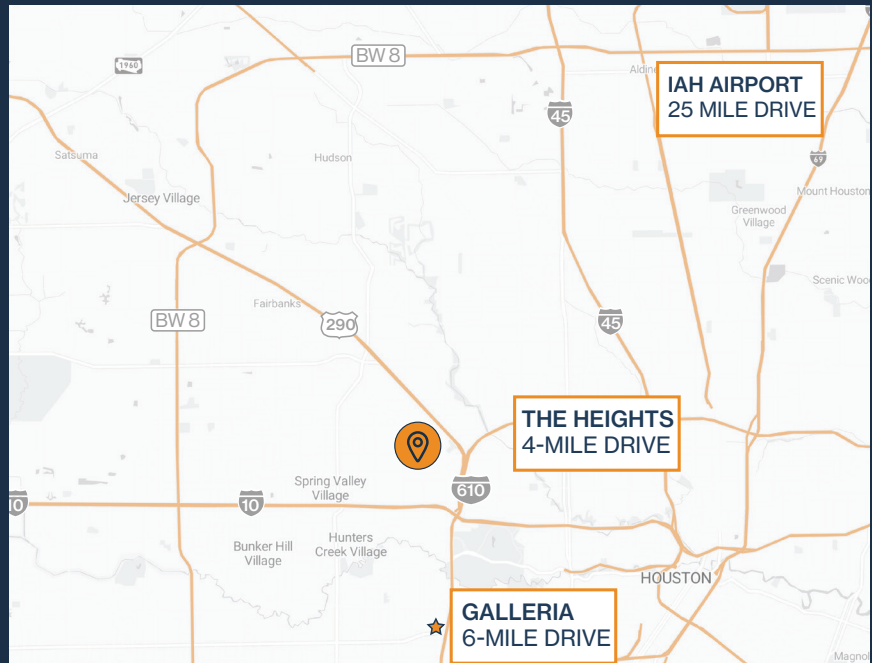
**GRADE-LEVEL AND  
SEMI-DOCK LOADING**



**EXTERIOR TENANT SIGNAGE**



**667 SF – 6,360 SF  
SUITES AVAILABLE**



**THOMAS PFEIFER**



281.504.7460



THOMAS.PFEIFER@FORT-COMPANIES.COM



**FORT**  
LEASING

This information is deemed reliable, however, Fort makes no guarantee, warranties, or representations as to the completeness or accuracy thereof.





**FORT**  
LEASING

# FAIRWAY PARK BUSINESS CENTER

2517-2523 FAIRWAY PARK DR, 10606, RD  
HEMPSTEAD  
HOUSTON, TEXAS 77092

## SITE PLAN



**THOMAS PFEIFER**  
832.405.6369  
thomas.pfeifer@fort-companies.com

This information is deemed reliable, however, Fort makes no guarantee, warranties, or representations as to the completeness or accuracy thereof.



**FORT**  
LEASING

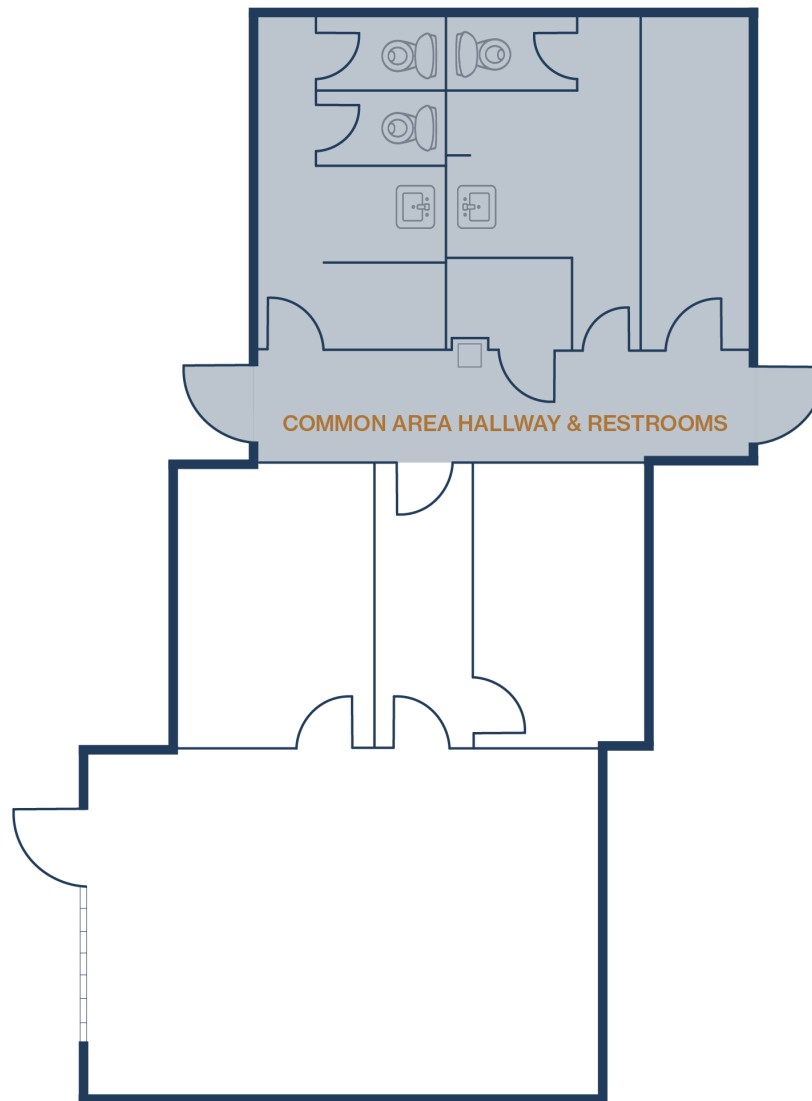
# FAIRWAY PARK BUSINESS CENTER

2517-2523 FAIRWAY PARK DR, 10606, RD  
HEMPSTEAD  
HOUSTON, TEXAS 77092

## UNIT 126 – 667 SF

### 667 SF OFFICE

- 100% Office
- Glass Storefront



**THOMAS PFEIFER**

832.405.6369

thomas.pfeifer@fort-companies.com

This information is deemed reliable, however, Fort makes no guarantee, warranties, or representations as to the completeness or accuracy thereof.



**FORT**  
LEASING

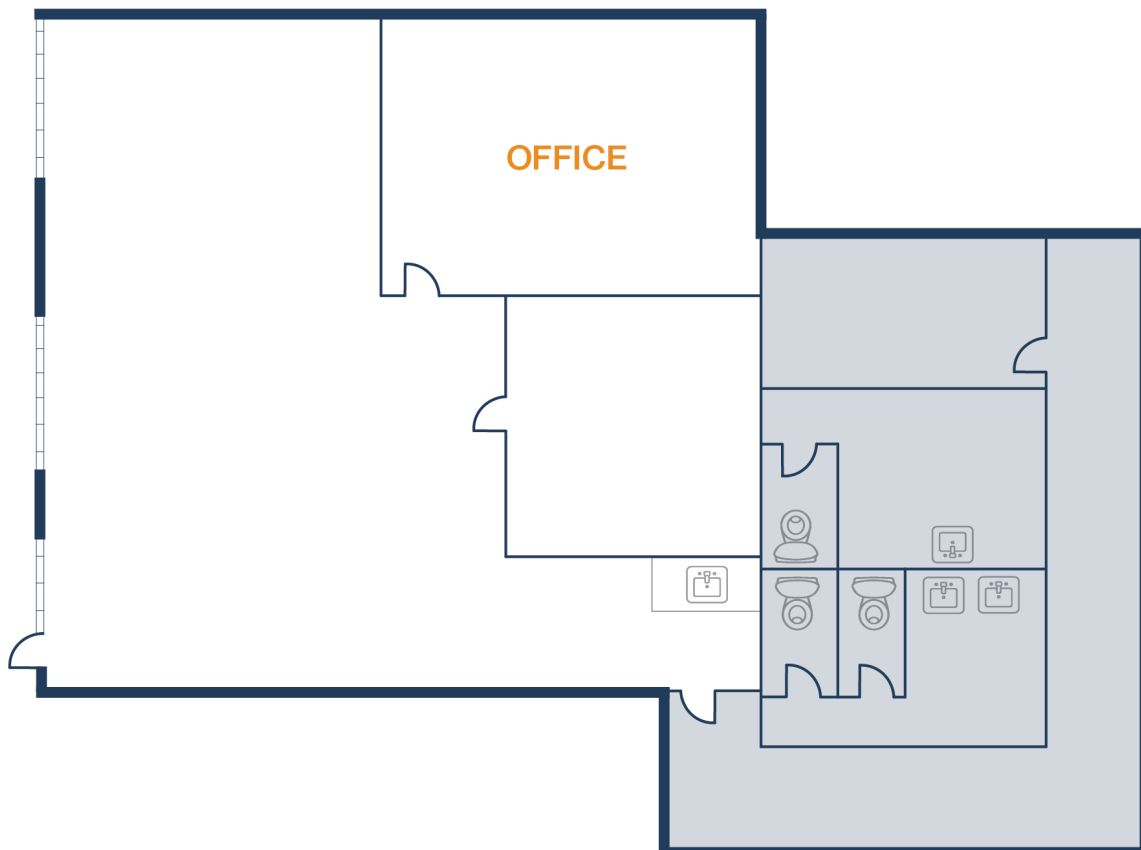
# FAIRWAY PARK BUSINESS CENTER

2517-2523 FAIRWAY PARK DR, 10606, RD  
HEMPSTEAD  
HOUSTON, TEXAS 77092

## UNIT 128 – 1,191 SF

### 1,191 SF OFFICE

- 100% Office
- Glass Storefront



**THOMAS PFEIFER**

832.405.6369

thomas.pfeifer@fort-companies.com

This information is deemed reliable, however, Fort makes no guarantee, warranties, or representations as to the completeness or accuracy thereof.



**FORT**  
LEASING

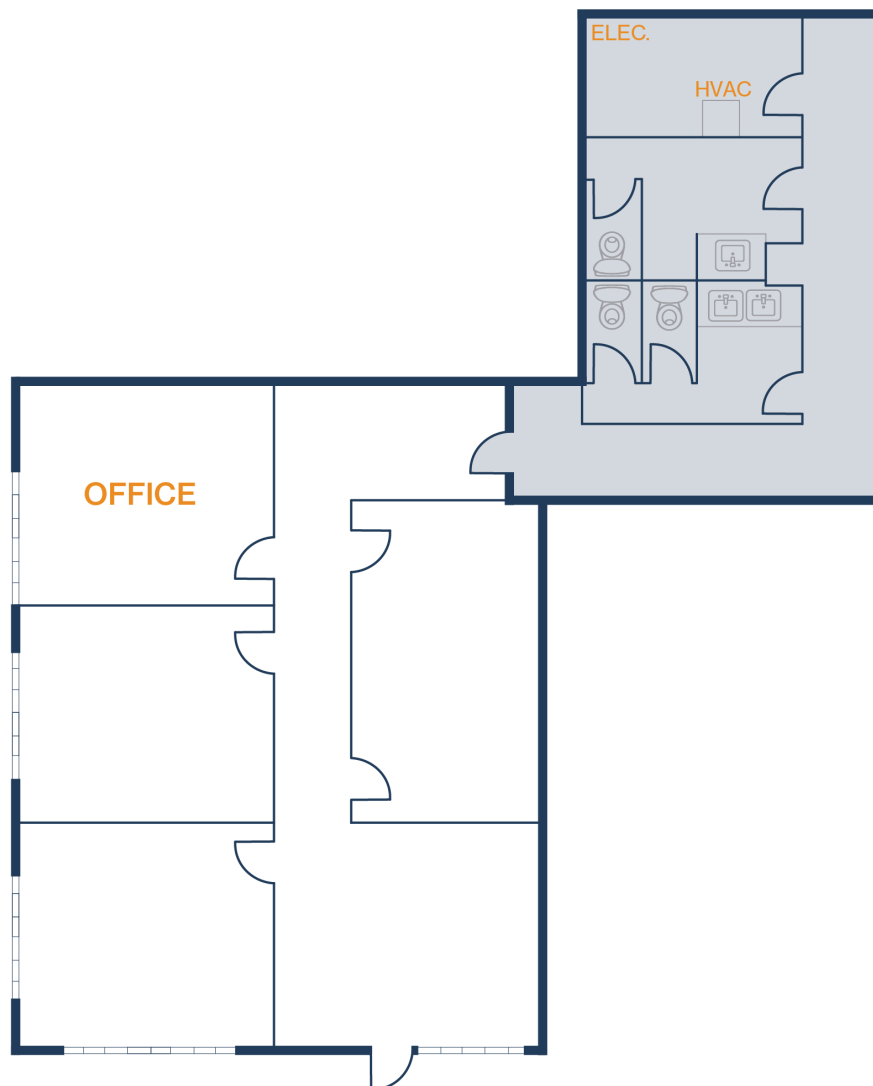
# FAIRWAY PARK BUSINESS CENTER

2517-2523 FAIRWAY PARK DR, 10606, RD  
HEMPSTEAD  
HOUSTON, TEXAS 77092

## UNIT 132 – 1,586 SF

### 1,586 SF OFFICE

- 100% Office
- Common Area Bathroom



**THOMAS PFEIFER**

832.405.6369

thomas.pfeifer@fort-companies.com

This information is deemed reliable, however, Fort makes no guarantee, warranties, or representations as to the completeness or accuracy thereof.



**FORT**  
LEASING

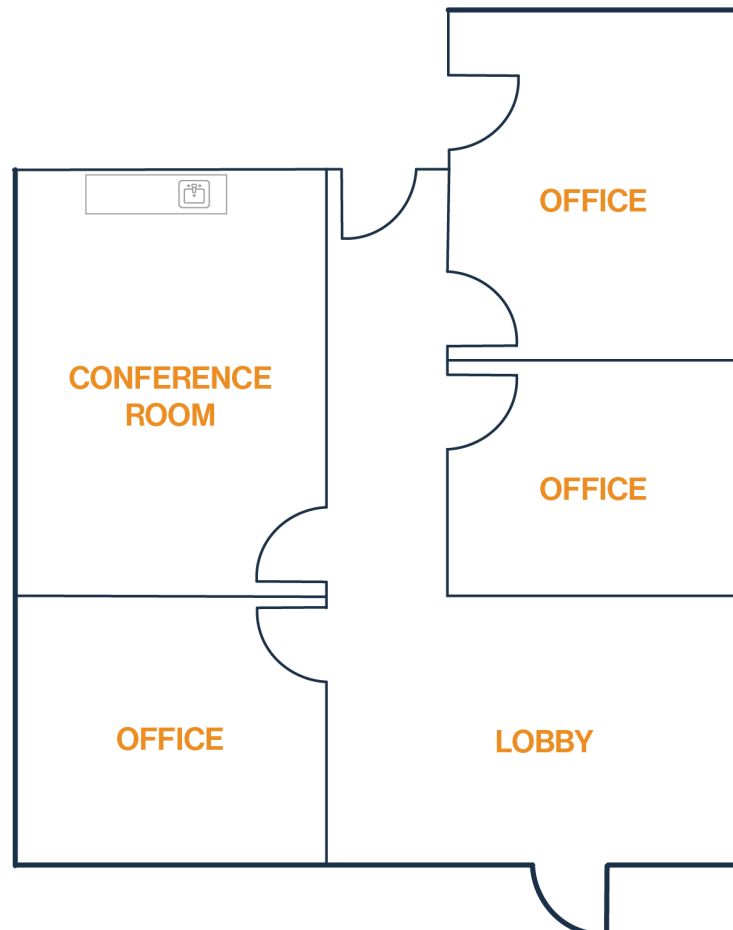
# FAIRWAY PARK BUSINESS CENTER

2517-2523 FAIRWAY PARK DR, 10606, RD  
HEMPSTEAD  
HOUSTON, TEXAS 77092

## UNIT 134 – 1,586 SF

1,586 SF OFFICE / 0 SF WAREHOUSE

- 100% Office
- Conference Room





**FORT**  
LEASING

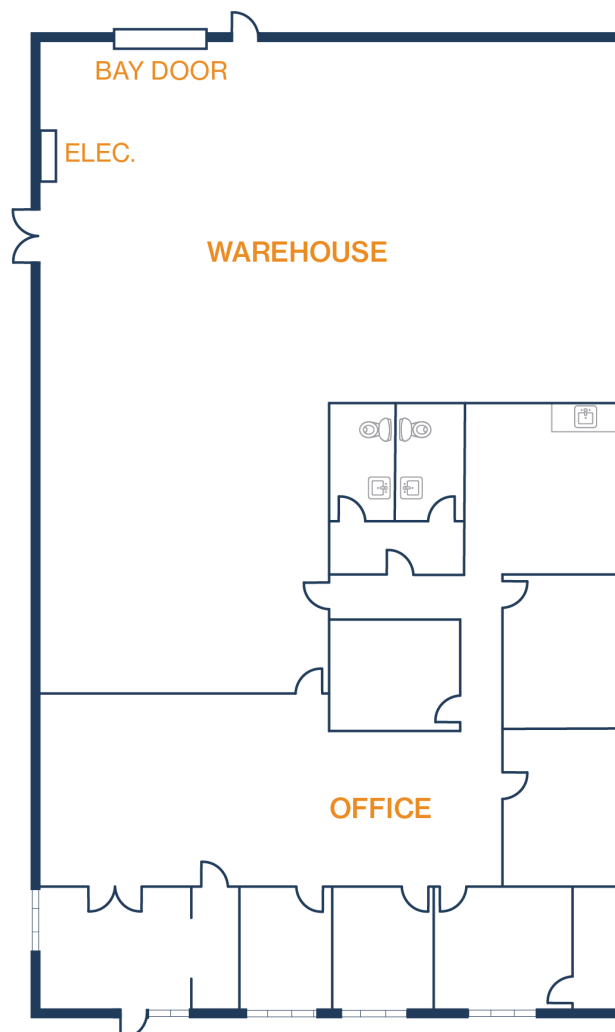
# FAIRWAY PARK BUSINESS CENTER

2517-2523 FAIRWAY PARK DR, 10606, RD  
HEMPSTEAD  
HOUSTON, TEXAS 77092

## UNIT 320 – 6,306 SF

3,283 SF OFFICE / 3,023 SF WAREHOUSE

- 14'-7" Clear Height
- (1) 10x10 Grade Level Door
- (1) Additional Grade Door Location
- Climate Controlled Warehouse



**THOMAS PFEIFER**

832.405.6369

thomas.pfeifer@fort-companies.com

This information is deemed reliable, however, Fort makes no guarantee, warranties, or representations as to the completeness or accuracy thereof.



**FORT**  
LEASING

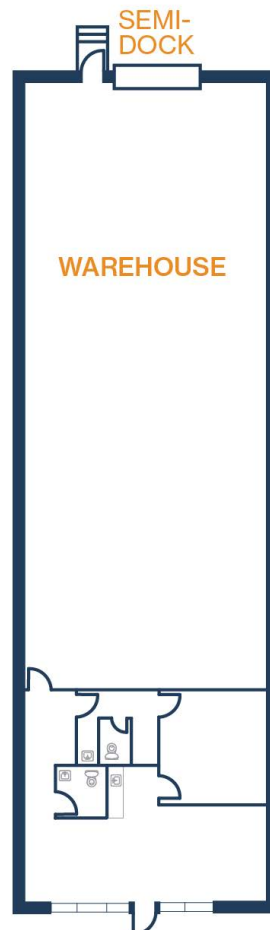
# FAIRWAY PARK BUSINESS CENTER

2517-2523 FAIRWAY PARK DR, 10606, RD  
HEMPSTEAD  
HOUSTON, TEXAS 77092

## UNIT 400 – 2,943 SF

736 SF OFFICE / 2,027 SF WAREHOUSE

- (1) Semi-Dock Door
- Glass Storefront
- (2) Restrooms



**THOMAS PFEIFER**  
832.405.6369  
thomas.pfeifer@fort-companies.com

This information is deemed reliable,  
however, Fort makes no guarantee,  
warranties, or representations as to the  
completeness or accuracy thereof.