

FOR SUBLEASE

7941 Corporate Drive, White Marsh, MD



+/- 58,000 SF Newly Designed Operations Center Class "A" Design & Finishes

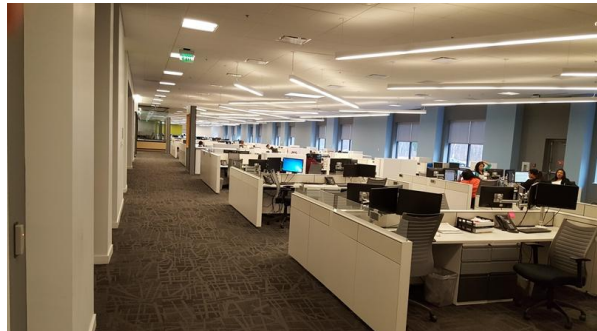


20,000+/- to 58,000 SF Available \$16.95/SF, Full Service, Plus Utilities & Janitorial Fully Furnished | Plug & Play

HIGHLIGHTS

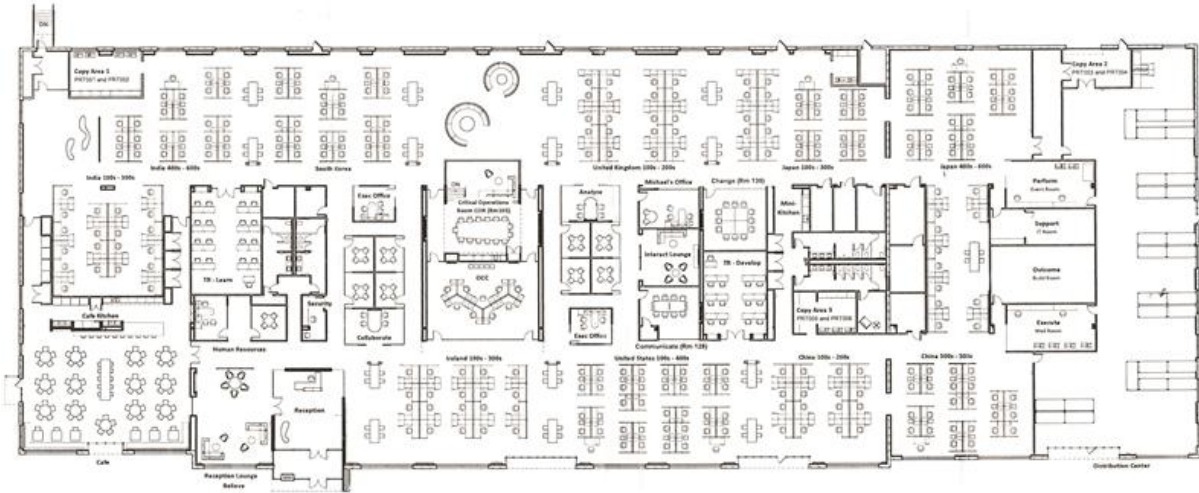
- Full building (57,782 SF)
- Term through 7/31/2025
- Full service rent includes O.E., R.E.T., Utilities & Janitorial
- 5/1,000 RSF parking ratio
- 5% fee to Co/Op Broker
- Large open floor plan (space can be divided)
- Multi-purpose cafe
- Completely new improvements throughout
- Generator with full building supply
- One (1) mile to White Marsh Town Center

PROPERTY PHOTOS





FLOOR PLAN



[DOWNLOAD FLYER](#)

[VIEW MAP](#)

Contact

L. Jamie Smith
Vice Chair
Direct: 410-953-6690
Mobile: 410-804-8192
jamie.smith@cushwake.com

David Feldman
Director
Direct: 443-367-4007
Mobile: 301-758-3343
david.feldman@cushwake.com

One East Pratt Street
Suite 700
Baltimore, MD 21202
Main +1 410 752 4285

Join the conversation online



www.cushmanwakefield.com

This email has been sent to you by Cushman & Wakefield marketing@cushwake.com. To ensure delivery, add us to your address book or safe senders list. If you wish to unsubscribe from future emails, please [click here](#). We typically process unsubscribe requests within 5 working days. [Click here](#) for our privacy notice.

Global Headquarters: Cushman & Wakefield | 225 W. Wacker Drive, Suite 3000 | Chicago, IL 60606 | USA

© 2023 Cushman & Wakefield. All rights reserved. The information contained in this communication is confidential, may be privileged and is intended for the exclusive use of the above named addressee(s). If you are not the intended recipient(s), you are expressly prohibited from copying, distributing, disseminating, or in any other way using any information contained within this communication. This information has been obtained from sources believed to be reliable but has not been verified. NO WARRANTY OR REPRESENTATION, EXPRESS OR IMPLIED, IS MADE AS TO THE CONDITION OF THE PROPERTY (OR PROPERTIES) REFERENCED HEREIN OR AS TO THE ACCURACY OR COMPLETENESS OF THE INFORMATION CONTAINED

HEREIN, AND SAME IS SUBMITTED SUBJECT TO ERRORS, OMISSIONS, CHANGE OF PRICE, RENTAL OR OTHER CONDITIONS, WITHDRAWAL WITHOUT NOTICE, AND TO ANY SPECIAL LISTING CONDITIONS IMPOSED BY THE PROPERTY OWNER(S). ANY PROJECTIONS, OPINIONS OR ESTIMATES ARE SUBJECT TO UNCERTAINTY AND DO NOT SIGNIFY CURRENT OR FUTURE PROPERTY PERFORMANCE. This e-mail may be considered advertising under federal law.