

**FOR SALE**



**140.21 ACRES OF LAND**

**CBRE**

**GUATAY LAND | CALIFORNIA**



# PROPERTY OVERVIEW

**Nestled in the serene beauty of Guatay, California, lies a sprawling expanse of 140.21 acres of untouched, vacant land waiting to be explored and developed.**

Surrounded by picturesque landscapes and rolling hills, this property offers a canvas for various possibilities, from creating a private retreat to envisioning a sustainable agricultural venture. Its prime location provides a balance of seclusion and accessibility, making it an ideal investment for those seeking tranquility and potential for growth in the heart of nature's embrace.

## PROPERTY HIGHLIGHTS

**SAN DIEGO**

COUNTY

**6,107,546**

SQUARE FEET

**APN'S**

407-160-02-00

407-170-01-00

407-170-02-00

**140.21**

ACRES

**THREE**

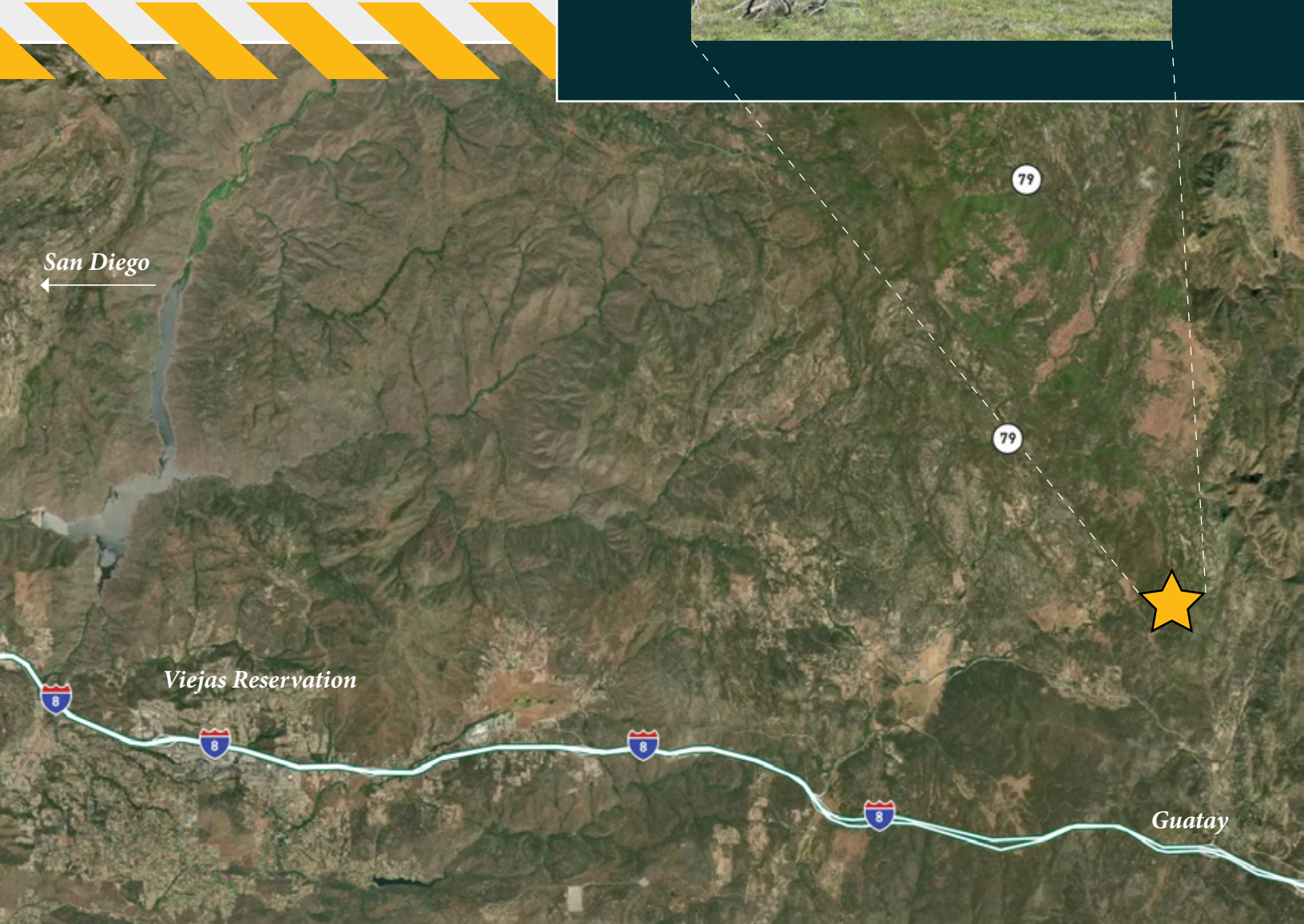
PARCELS



# "MINUTES TO INTERSTATE 8"



## MAP



140.21 Acres



Access from Guatay



50 - miles to Downtown San Diego



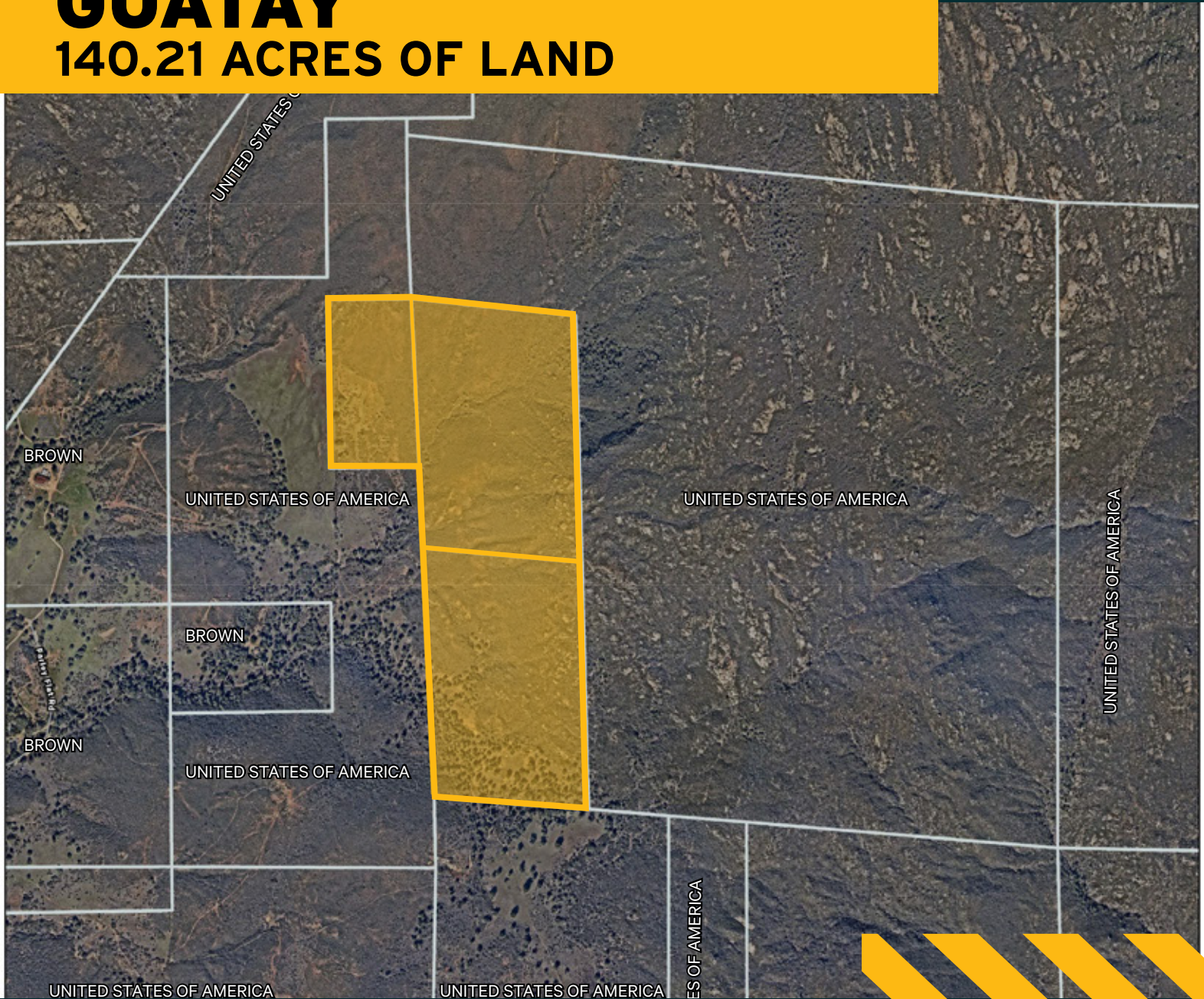
11 - miles to the Viejas Reservation



Surrounded by the Cleveland National Forest

# GUATAY

## 140.21 ACRES OF LAND



### CONTACTS

**ROB HIXSON, SIOR**  
Senior Vice President  
+1 619 696 8350  
rob.hixson@cbre.com  
Lic. 00944946

**JAMES HIXSON**  
Senior Associate  
+1 619 696 8340  
james.hixson@cbre.com  
Lic. 02146682



**CBRE**

© 2024 CBRE, Inc. All rights reserved. This information has been obtained from sources believed reliable but has not been verified for accuracy or completeness. CBRE, Inc. makes no guarantee, representation or warranty and accepts no responsibility or liability as to the accuracy, completeness, or reliability of the information contained herein. You should conduct a careful, independent investigation of the property and verify all information. Any reliance on this information is solely at your own risk. CBRE and the CBRE logo are service marks of CBRE, Inc. All other marks displayed on this document are the property of their respective owners, and the use of such marks does not imply any affiliation with or endorsement of CBRE. Photos herein are the property of their respective owners. Use of these images without the express written consent of the owner is prohibit