

**AVISON  
YOUNG**

**Freestanding Life Science for Sublease**  
**±39,176 Square Feet**

3100 Central Expressway, Santa Clara, CA



**Ben Damon**

1.408.913.6940

[ben.damon@avisonyoung.com](mailto:ben.damon@avisonyoung.com)

CA License # 02089280

**Derek Cuschieri**

1.408.913.6912

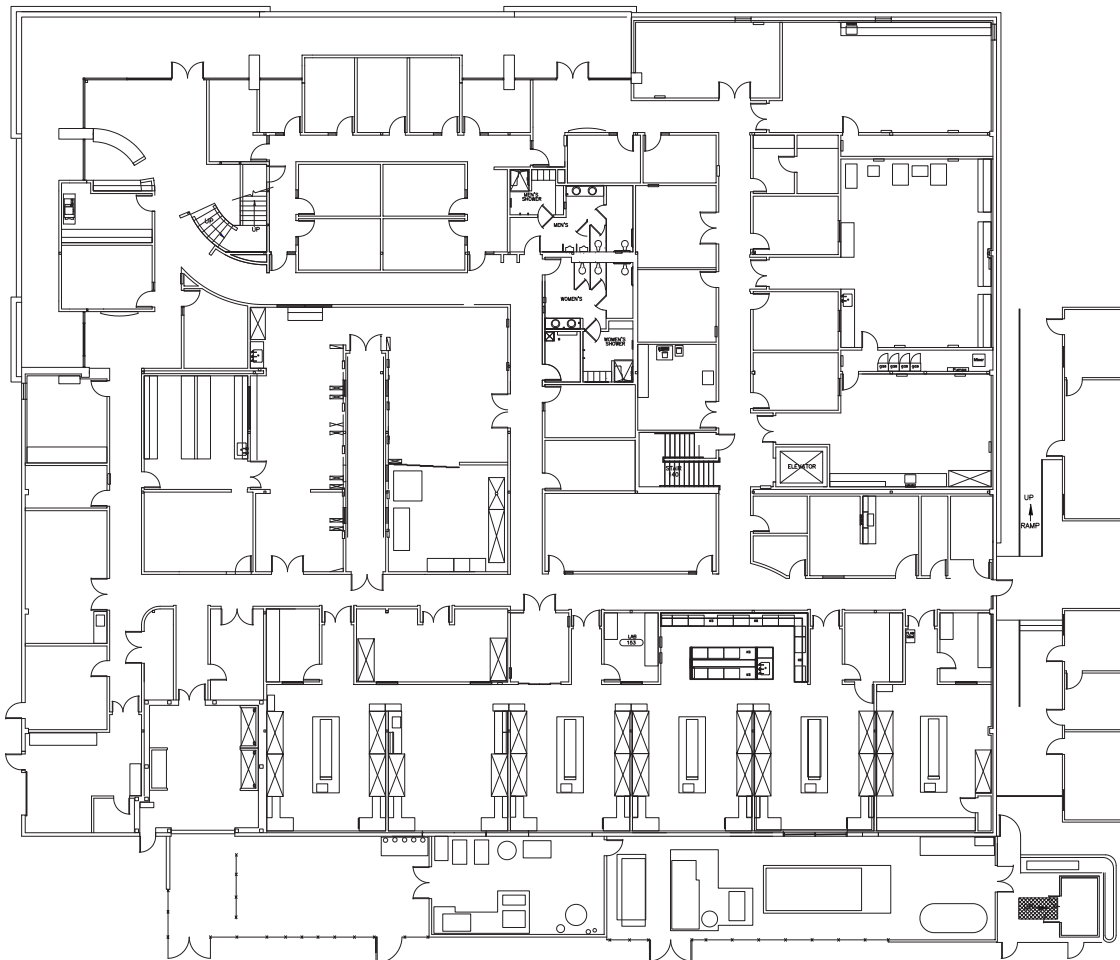
[derek.cuschieri@avisonyoung.com](mailto:derek.cuschieri@avisonyoung.com)

CA License # 02035183

3100 Central Expressway is a ±39,176 SF, two-story state-of-the-art life science facility designed to support cutting-edge research and development. The building features a variety of specialized lab spaces, including fume hoods, workbenches, and dedicated hazardous storage with two H2 Hazardous Storage and Containment facilities. Additionally, the property offers robust backup power systems, executive office suites, and a spacious, modern lobby to enhance functionality and comfort.

- Sublease expiration date - November 30, 2026
- Highly visible Central Expressway location
- Heavy Power - (to be confirmed)
- Call to tour

### First Floor



#### Ben Damon

1.408.913.6940

ben.damon@avisonyoung.com

CA License # 02089280

#### Derek Cuschieri

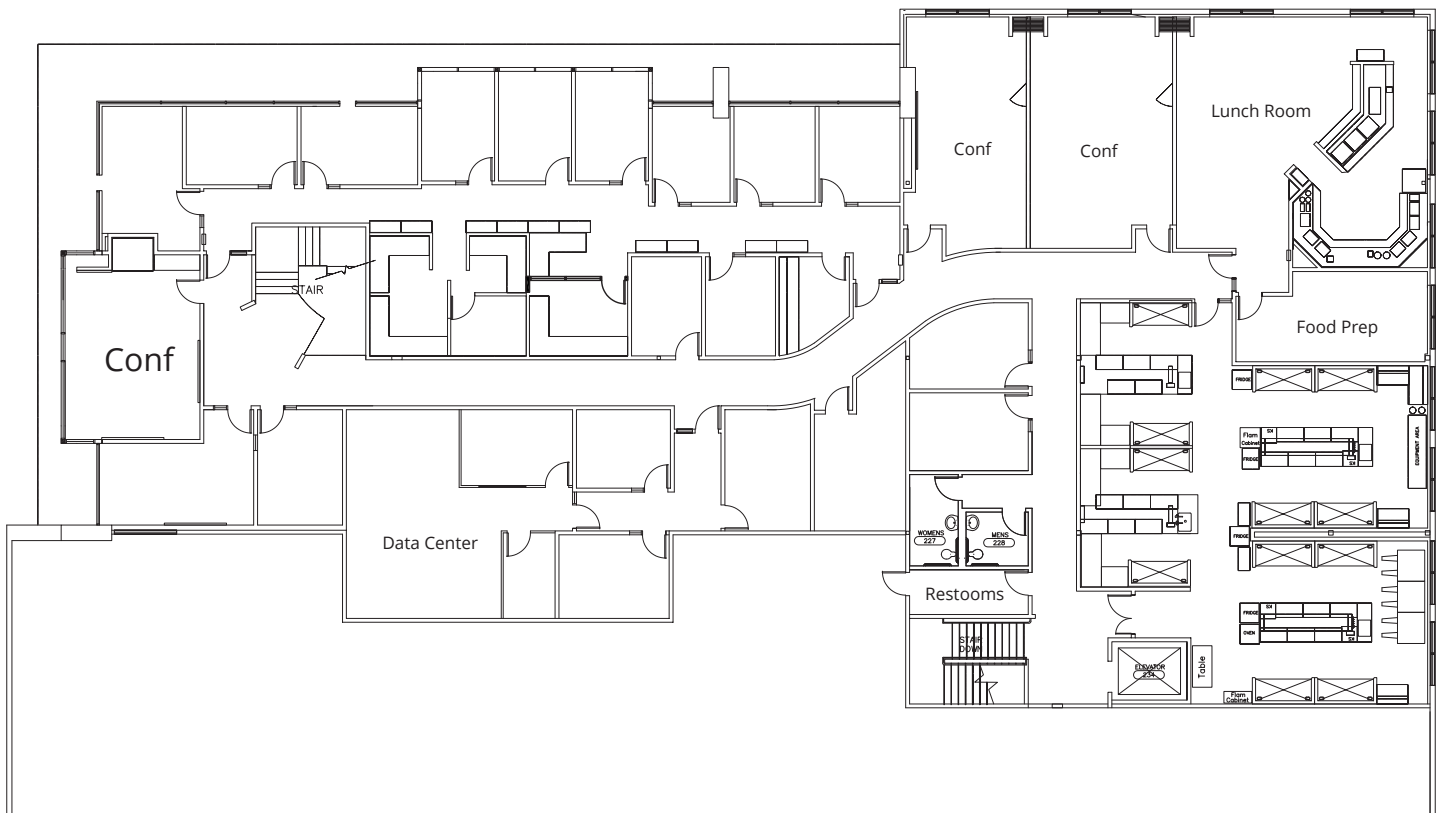
1.408.913.6912

derek.cuschieri@avisonyoung.com

CA License # 02035183

- Executive Offices
- Cafeteria
- Small Lab Area

### Second Floor



**Ben Damon**

1.408.913.6940

ben.damon@avisonyoung.com

CA License # 02089280

**Derek Cuschieri**

1.408.913.6912

derek.cuschieri@avisonyoung.com

CA License # 02035183



## Freestanding Life Science for Sublease ±39,176 Square Feet

3100 Central Expressway, Santa Clara, CA



**Ben Damon**

1.408.913.6940

[ben.damon@avisonyoung.com](mailto:ben.damon@avisonyoung.com)

CA License # 02089280

**Derek Cuschieri**

1.408.913.6912

[derek.cuschieri@avisonyoung.com](mailto:derek.cuschieri@avisonyoung.com)

CA License # 02035183