

CUBEWORK



**1 NIXON LN, EDISON,
NJ 08837**

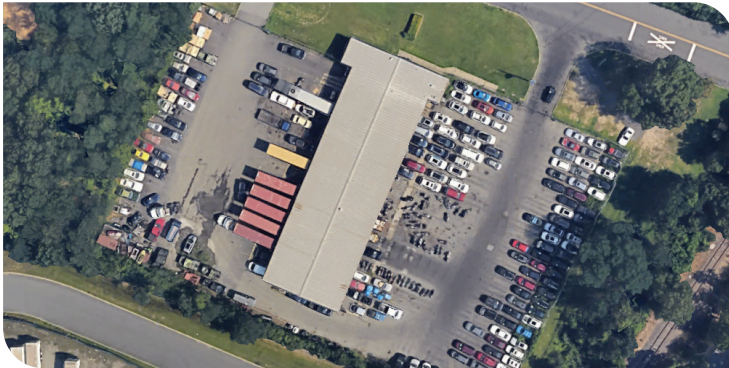
**FOR SALE/
LEASE**



TERMINAL

CUBEWORK

📍 1 Nixon Ln, Edison, NJ 08837



Property Highlights

- ✓ Building Type: Industrial
- ✓ RBA: 10,350 Square Feet
- ✓ Land/Site: 3.52 Acres
- ✓ Loading Docks: 30 ext.
- ✓ Ramps: 1
- ✓ Year Built: 1993
- ✓ Lease Price: \$0.45NNN
- ✓ Stories: 1
- ✓ Ceiling Clearance: 24'
- ✓ Construction: Reinforced Concrete
- ✓ Zoning: LI

For Sale or Lease by owner. 1 Nixon Lane in Edison, NJ, offers a prime trucking terminal with easy access to major freeways like I-287, I-95, and Route 1, making it an ideal location for transportation and logistics operations. This facility is perfect for trucking companies needing efficient connectivity to the tri-state area, ensuring smooth and convenient transportation for your business. This site sits on 3.52 Acres, with 20 loading docks, and 10,350 SF of warehouse space.

For Leasing/Sale Contact:

- 📞 Christine Wei (800) 338-6369
- ✉️ Christine.Wei@Cubework.com