

Industrial space available for lease!



WORLD PARK @ UNION CENTRE 4 | 9361 & 9363 Allen Road | West Chester, Ohio 45069

BUILDING FEATURES

- 48,400 Total building SF
- 16' ceiling heights
- Fully sprinklered
- 110' building depth
- 40' x 40' column spacing
- +/- 150 parking spaces

SUITE 9361

- 5,000 SF office

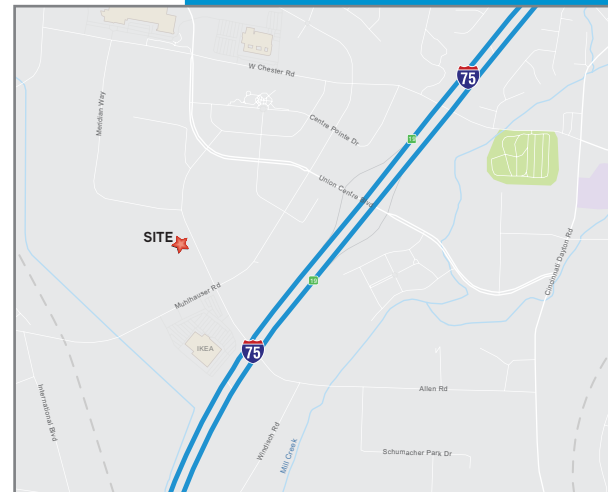
SUITE 9363

- 5,540 SF available
 - 1,000 SF warehouse
 - 4,540 SF office
- 1 Drive-in

SUITE 9361 & 9363

Operating Expenses : \$3.06/SF

- 10,540 SF available
 - 1,000 SF warehouse
 - 9,540 SF office
- 1 Drive-in



John B. Gartner, III, SIOR
Brokerage Senior Vice President
+1 513 562 2207
john.gartner@colliers.com

Erin M. Casey, GA-C, MICP™
Brokerage Sr. VP
+1 513 562 2225
erin.casey@colliers.com

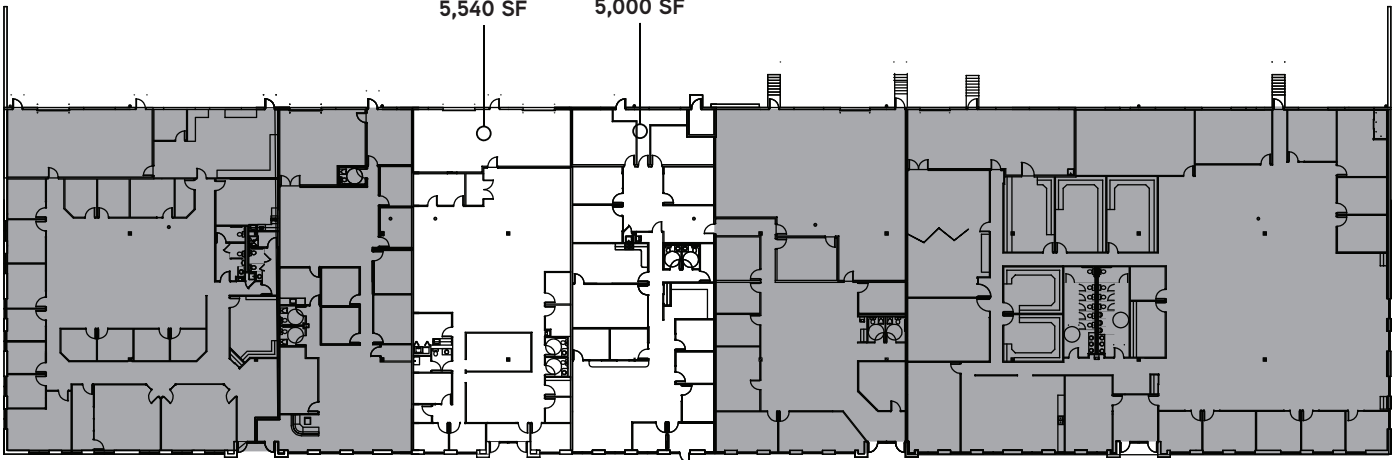
Colliers International
425 Walnut Street | Suite 1s00
Cincinnati, Ohio 45202
P: +1 513 721 4200



Site Plan:

SUITE 9363
AVAILABLE
5,540 SF

SUITE 9361
AVAILABLE
5,000 SF



World Park @ Union Centre
Building 4

AVAILABLE

LEASED

This document has been prepared by Colliers International for advertising and general information only. Colliers International makes no guarantees, representations or warranties of any kind, expressed or implied, regarding the information including, but not limited to, warranties of content, accuracy and reliability. Any interested party should undertake their own inquiries as to the accuracy of the information. Colliers International excludes unequivocally all inferred or implied terms, conditions and warranties arising out of this document and excludes all liability for loss and damages arising there from. This publication is the copyrighted property of Colliers International and/or its licensors(s). ©2018. All rights reserved.