

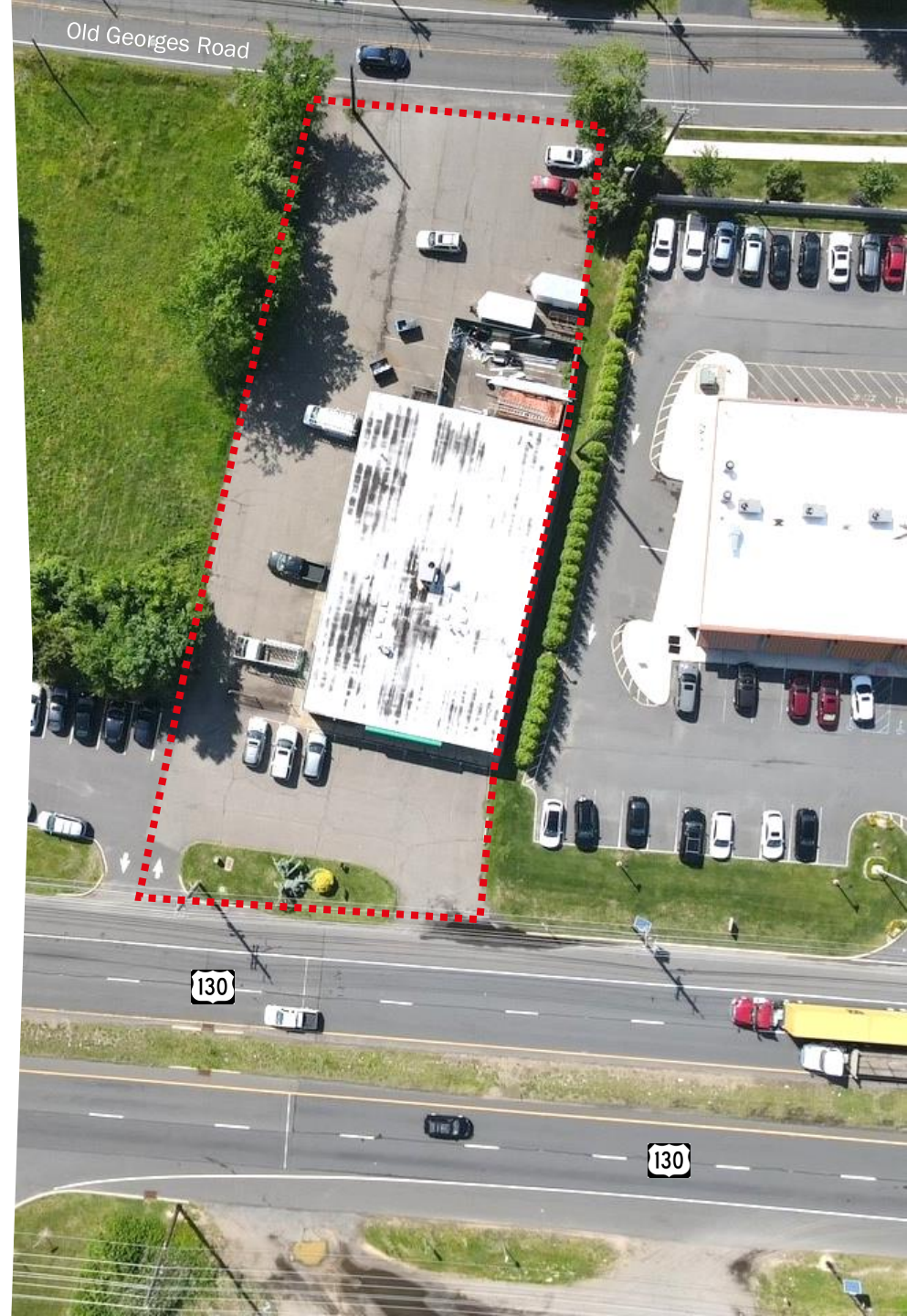


2086

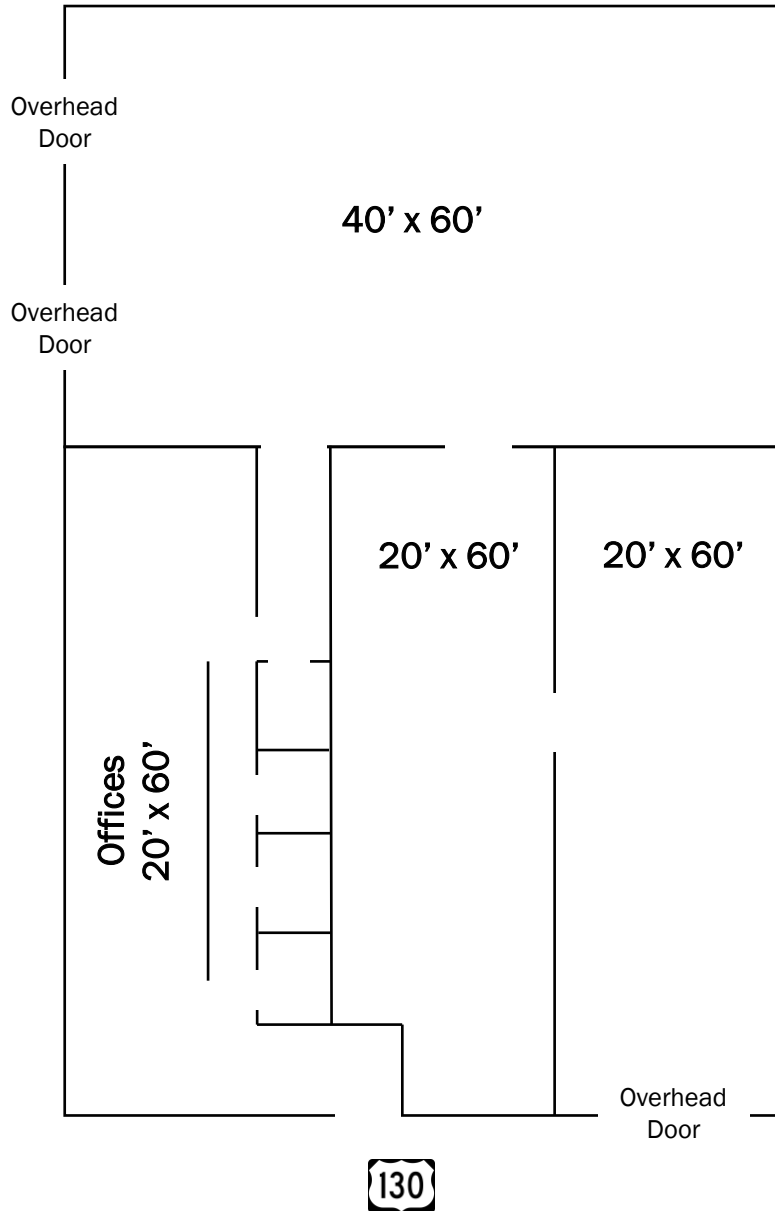
US 130
North Brunswick, NJ

Property Highlights

- 6,000 SF building available for lease (Divisible)
- 0.60 acres
- Located in the GO zone (General Office)
- Ingress / egress access from Route 130 and Old Georges Road
- Route 130: 38,519 VPD
- Asking rent: Upon request
- Taxes: \$25,000.00 (2023)



Floor Plan



Demographics



68,655
Population



\$107,985
Med. HH Income



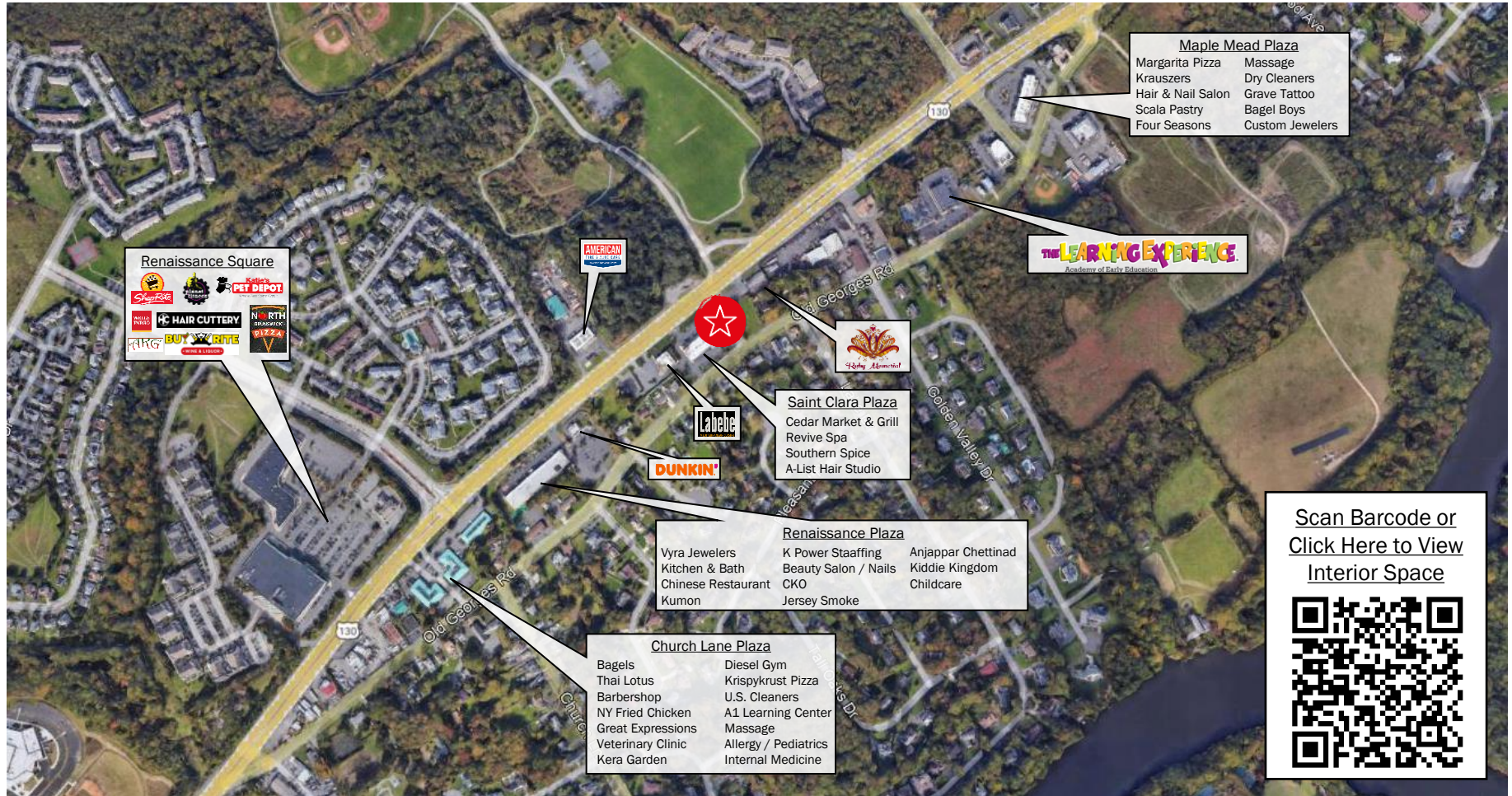
31,197
Employees



2,879
Businesses

Demographics taken within 3 miles
Source: ESRI, 2023

Market Aerial



For more information contact:

Craig Parcels

Senior Vice President
 Direct: +1 973 829 4780
 Mobile: +1 201 618 7223
 craig.parcels@jll.com

