



OFFICE SPACE FOR LEASE 110 S HAGER AVE, BARRINGTON, IL



BUILDING FEATURES:

- Building Renovations Including common areas, New LED lighting, flooring, signage & parking lot upgrades in 2021
- 225 SF (1st Floor space) Available
- Building renovations in 2021
- Operable Windows and Efficient Layouts
- Located Across from Barrington High School
- All Inclusive Executive Suites available 180- 400 SF
- High End Finishes & ADA Restrooms
- Ample Parking on site
- Near Restaurants, Shopping and Metra
- Exterior Signage Available
- RENTAL RATE: SEE BELOW
* Rate Includes HVAC, Janitorial & Electricity
WI-FI & Common Area Kitchen Access
- Visit www.chicagolandcommercial.com for links to 3-D Virtual Tours!!

AVAILABLE SPACE:

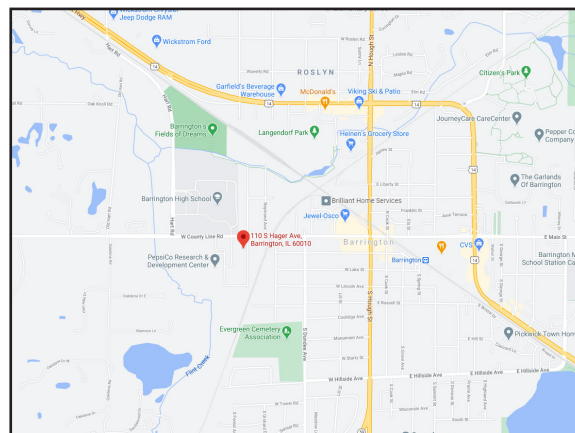
SUITE	SIZE (SF)	PRICING	AVAILABLE
101-C	225 RSF	\$495 Per Month *	12/1/25 Secure Private Office w/ exterior window
205	900 SF	\$1,050 Per Month (Includes Utilities !)	2 Private Offices, open space & more!

EXECUTIVE OFFICE SUITES HAVE OPERABLE WINDOWS & INCLUDES UTILITIES & WI-FI

FOR MORE INFORMATION:

RANDY OLCZYK
Direct: 847.246.9611
randy@chicagolandcommercial.com

TOM CALLAHAN
Direct: 847.246.9636
Tom@chicagolandcommercial.com



4811 Emerson Ave Suite 112, Palatine, IL 60067

www.chicagolandcommercial.com



OFFICE SPACE FOR LEASE

110 S HAGER AVE, BARRINGTON, IL

INTERIOR BUILDING PHOTOS





OFFICE SPACE FOR LEASE

110 S HAGER AVE, BARRINGTON, IL

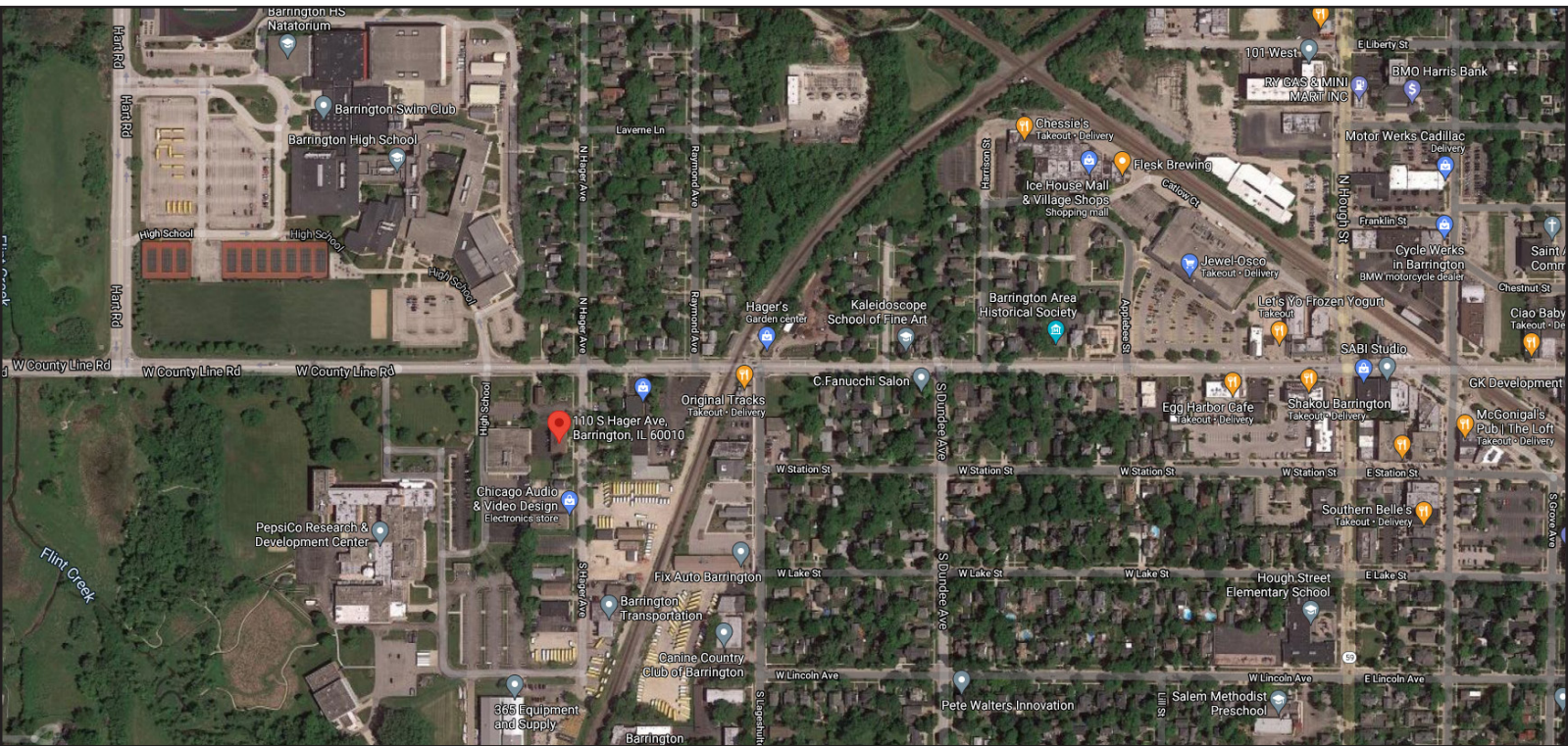
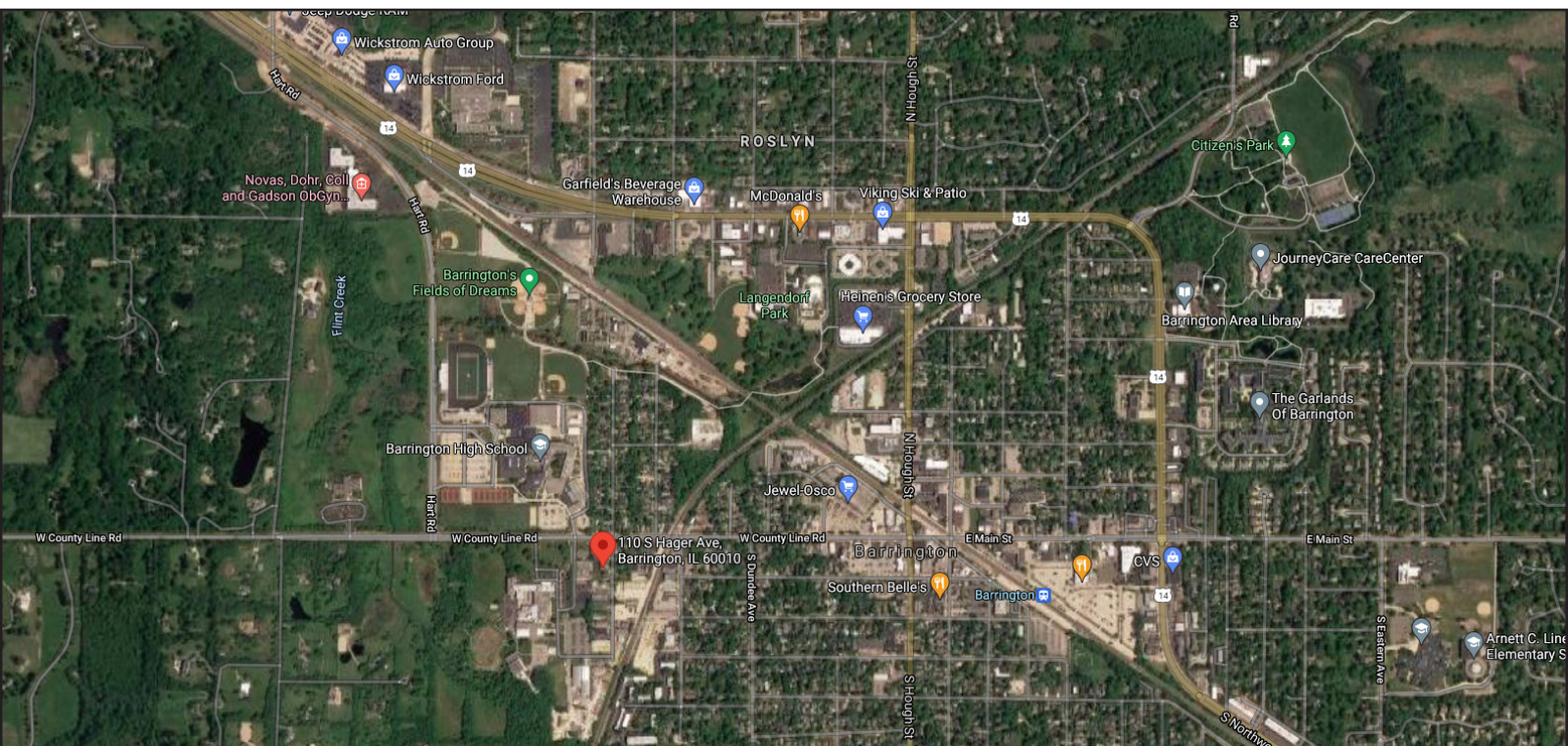
INTERIOR BUILDING PHOTOS





OFFICE SPACE FOR LEASE 110 S HAGER AVE, BARRINGTON, IL

AERIAL MAP



FOR MORE INFORMATION:

RANDY OLCZYK
Direct: 847.246.9611
randy@chicagolandcommercial.com

TOM CALLAHAN
Direct: 847.246.9636
@chicagolandcommercial.com

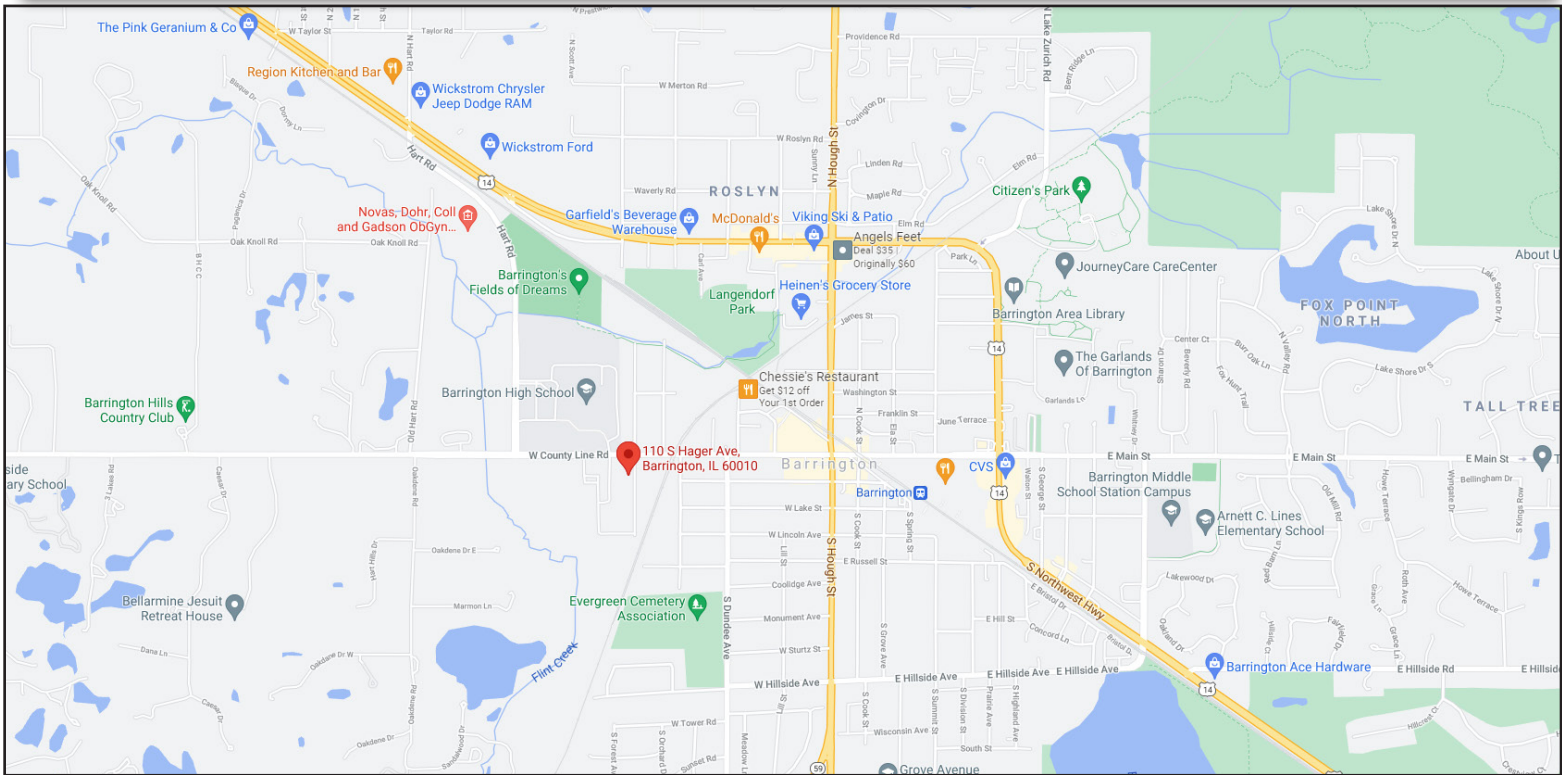
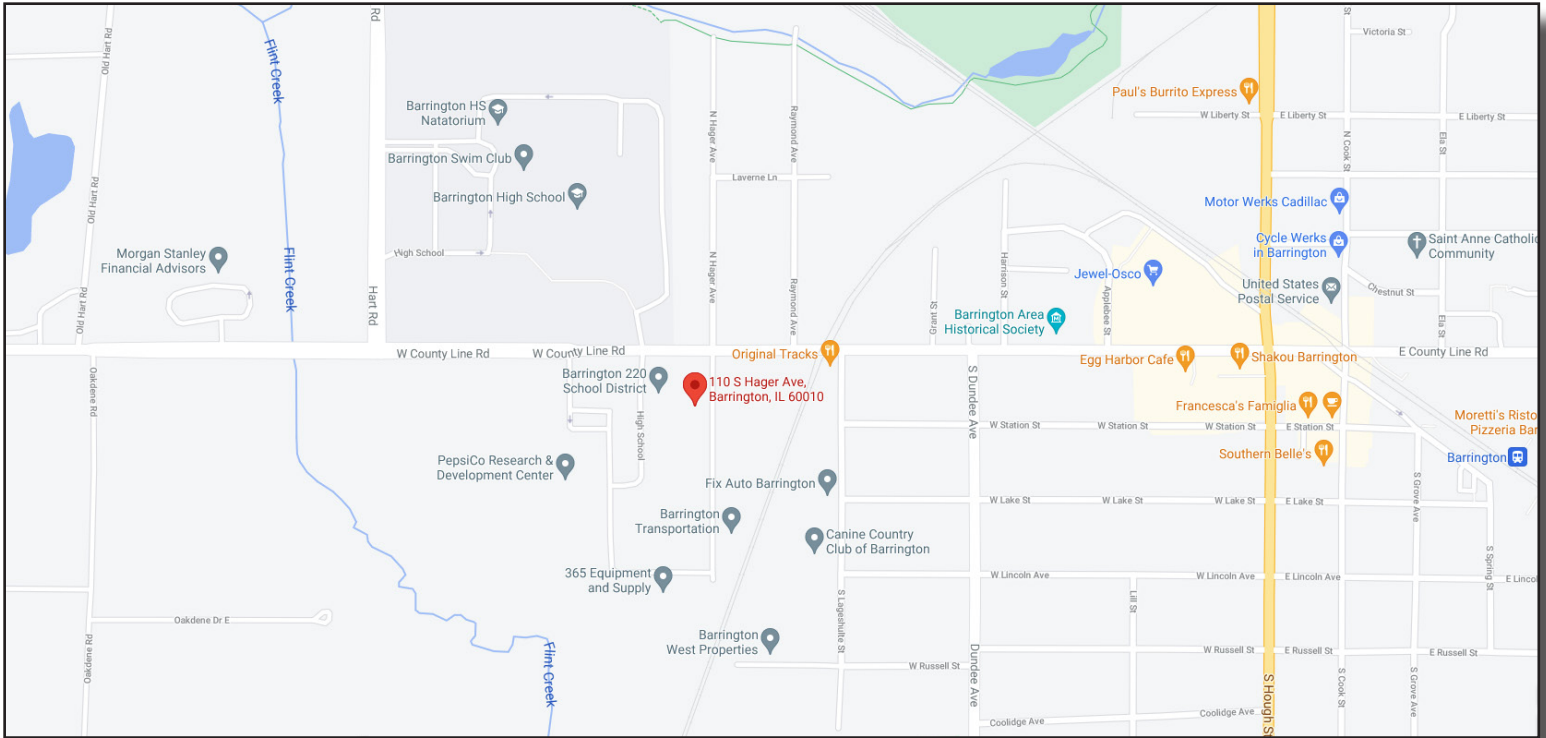


4811 Emerson Ave Suite 112, Palatine, IL 60067



OFFICE SPACE FOR LEASE 110 S HAGER AVE, BARRINGTON, IL

LOCATION MAP



FOR MORE INFORMATION:

RANDY OLCZYK
Direct: 847.246.9611
randy@chicagolandcommercial.com

TOM CALLAHAN
Direct: 847.246.9636
@chicagolandcommercial.com

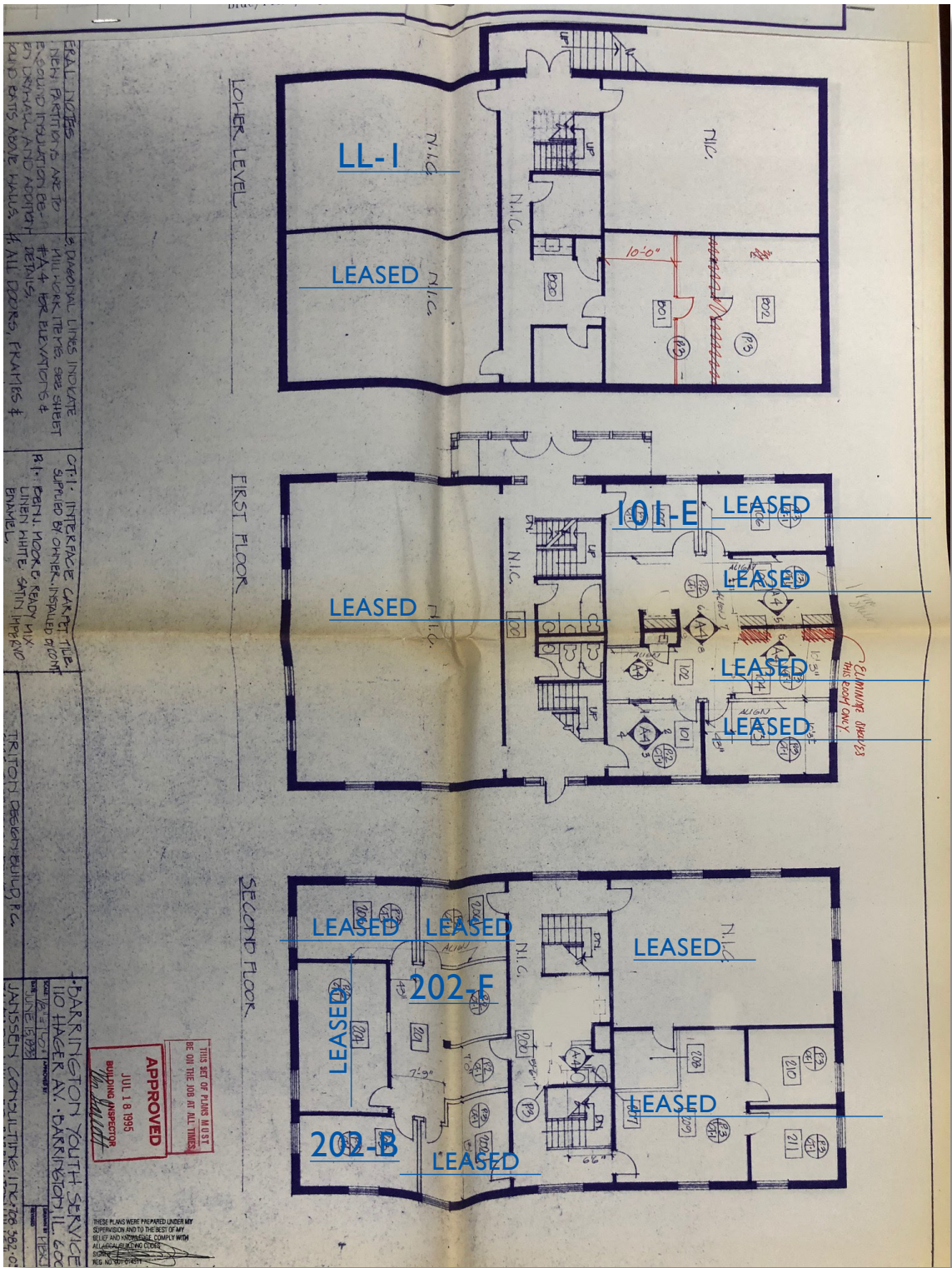


4811 Emerson Ave Suite 112, Palatine, IL 60067



OFFICE SPACE FOR LEASE 110 S HAGER AVE, BARRINGTON, IL

FLOOR PLATES



FOR MORE INFORMATION:

RANDY OLCZYK
 Direct: 847.246.9611
 randy@chicagolandcommercial.com

TOM CALLAHAN
 Direct: 847.246.9636
 @chicagolandcommercial.com

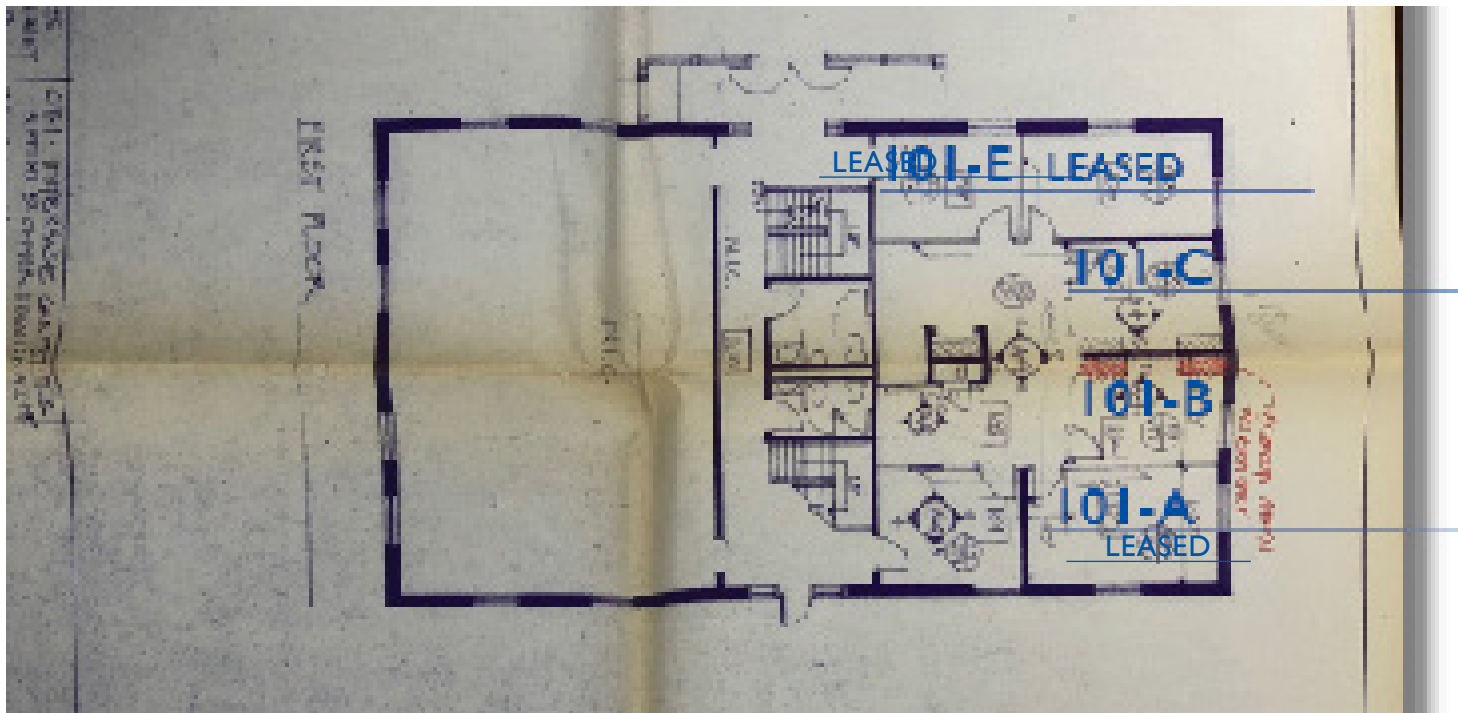


4811 Emerson Ave Suite 112, Palatine, IL 60067

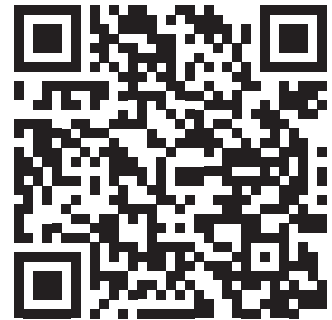


OFFICE SPACE FOR LEASE 110 S HAGER AVE, BARRINGTON, IL

SUITE 101 EXECUTIVE SUITES (101-C)



EXECUTIVE SUITES SUITE: (101-C) \$495 PER MONTH INCLUDES WI-FI & UTILITIES!



Scan the QR Code or click [here](#) for a 3-D Virtual Tour of the space!

FOR MORE INFORMATION:

RANDY OLCZYK
Direct: 847.246.9611
randy@chicagolandcommercial.com

TOM CALLAHAN
Direct: 847.246.9636
@chicagolandcommercial.com

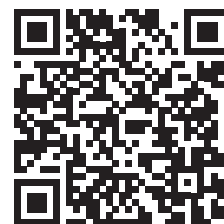


4811 Emerson Ave Suite 112, Palatine, IL 60067



OFFICE SPACE FOR LEASE 110 S HAGER AVE, BARRINGTON, IL

SUITE 205 (900 SF) \$1,050 PER MONTH



Scan the QR Code or click [here](#) for a 3-D Virtual Tour of the space!

FOR MORE INFORMATION:

RANDY OLCZYK
Direct: 847.246.9611
randy@chicagolandcommercial.com

TOM CALLAHAN
Direct: 847.246.9636
@chicagolandcommercial.com



4811 Emerson Ave Suite 112, Palatine, IL 60067