

61 BROAD STREET

Downtown Charleston SC

In the heart of Charleston's Historic District

OFFICE SPACE // 1,230 - 4,598 SF AVAILABLE



BROOKE EYRICH

brooke.eyrich@jll.com

+1 301 525 3237

@brooke_eyrich_cre

BRIAN CONNOLLY

brian.connolly@jll.com

+1 202 316 4846



THE SITE

ADDRESS

61 Broad Street

YEAR BUILT

1815

BUILDING TOTAL SF

7058 SF

AVAILABLE SF

1230 - 4598 SF

AVAILABILITY

Vacant today

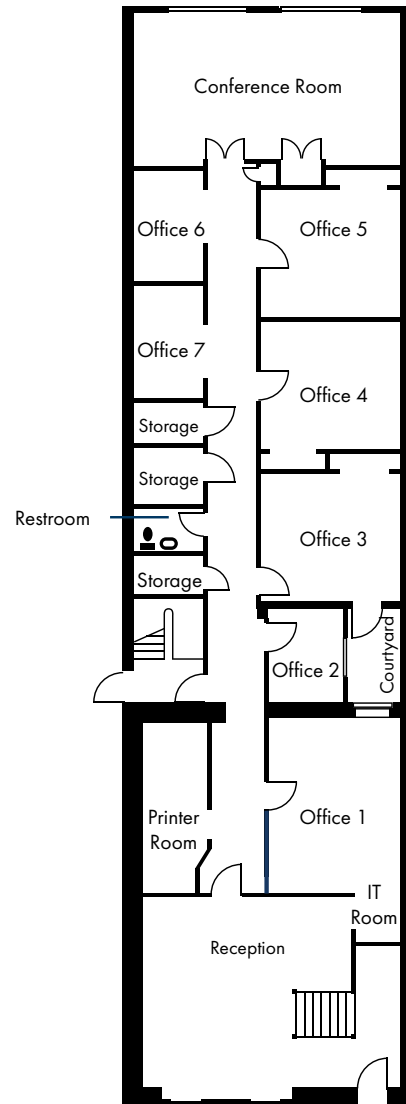
PARKING

Contact Broker for Details



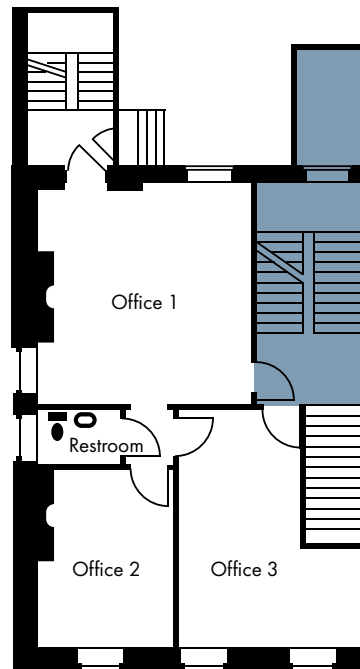
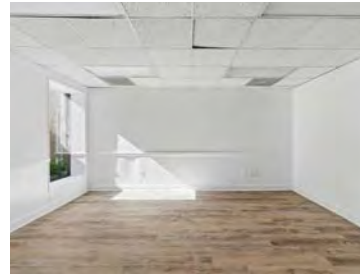
FLOOR PLANS

Floor Plan can be leased together or separately



Broad Street

Ground Floor - 3,368 SF



Broad Street

Second Floor - 1,230 SF

■ Not available



AREA OVERVIEW



North Charleston

Daniel Island

Mt. Pleasant

Arthur Ravenel Jr. Bridge

MARKET STREET

KING STREET

MEETING STREET

EAST BAY STREET

BROAD STREET

West Ashley
Johns Island
James Island

SURROUNDING AMENITIES



GOVERNORS INN
HOTEL

U.S. DISTRICT
COURTHOUSE

J. WATIES WARING
JUDICIAL CENTER

ST. MICHAEL'S
CHURCH

CHARLESTON
PLASTIC SURGERY

Simpatico
GALLERY

SEYAHAN

Magnolias

THE LITTLE MARKET

DARE
GALLERY

F&R

BERNHARDI
LAW OFFICES



THE HAT MAN

BROAD STREET

ST. JOHN BAPTIST

John Rutledge
House Inn

Sorelle

HISTORIC COURTHOUSE

WASHINGTON SQUARE

CHARLESTON PLACE

THE GEORGE
GALLERY

South
State

THE BUND
TIGER

The ESTABLISHMENT

JAKES MARKET

OAK
STEAKHOUSE

Le Banque
BRASSERIE

Mildred Newberry

Alena Fede





MARKET PULSE

CHARLESTON, SOUTH CAROLINA

40+

**NEW RESIDENTS
DAILY**

3X

**FASTER JOB GROWTH
THAN U.S. AVERAGE**

11TH

**BEST PERFORMING
U.S. CITY**

84%

**OF NATIONAL
AVERAGE PAY**



BROOKE EYRICH
brooke.eyrich@jll.com
+1 301 525 3237
@brooke_eyrich_cre

BRIAN CONNOLLY
brian.connolly@jll.com
+1 202 316 4846



Although information has been obtained from sources deemed reliable, JLL does not make any guarantees, warranties or representations, express or implied, as to the completeness or accuracy as to the information contained herein. Any projections, opinions, assumptions or estimates used are for example only. There may be differences between projected and actual results, and those differences may be material. JLL does not accept any liability for any loss or damage suffered by any party resulting from reliance on this information. If the recipient of this information has signed a confidentiality agreement with JLL regarding this matter, this information is subject to the terms of that agreement. ©2025 Jones Lang LaSalle Brokerage, Inc. All rights reserved.