



# MISSION WEST SHOPPING CENTER

## PRIME RETAIL SPACES FOR LEASE

Johnson Dr. & Martway St., Mission, KS | A Kansas City Suburb



## \$12.50-\$16/SF NNN | 1,300 SF UP TO 9,473 SF

- 1,300 SF, 1,650 SF and 2,000 SF retail spaces. Asking \$16/SF NNN
- 5,600 SF former medical office with exam rooms, lab space, plumbing throughout. Asking \$15/SF NNN
- 9,473 SF end cap space (former SuperKidz) with open ceiling of 20'11" to the roof deck. Asking \$12.50/SF NNN
- Join Dollar Tree, Planet Fitness, The Other Place, Kansas Drivers License Bureau, Los Gallitos Fresh Mexican Grill, Thai Orchid, Great Tanz, American Honey Hair Company, and Slim Chickens
- Highly accessible location just seconds from Metcalf Avenue (69 Highway), Shawnee Mission Parkway and I-35. Large daytime population and very dense well established residential community, two High Schools are within .5 miles
- High Traffic area with over 29,000 cars per day and great building and monument signage available
- Mission West is located across the street from HyVee Grocery, Natural Grocers, Five Guys, and PepperJax Grill - other nearby tenants include: Target, Panera Bread, Culvers, Horizon's High School and Shawnee Mission North High School, Applebee's, Burger King, Arby's, Popeye's, Planet Sub, Jose Peppers, Starbucks, and Subway
- Excellent demographics



CLICK HERE TO VIEW MORE LISTING INFORMATION

For More Information Contact:

Exclusive Agents

GRANT SUMMERS | 816.412.7307 | [gsummers@blockandco.com](mailto:gsummers@blockandco.com)

PAUL MASSALI | 816.412.7409 | [pmassali@blockandco.com](mailto:pmassali@blockandco.com)

MAX KOSOGLAD | 816.412.7363 | [mkosoglad@blockandco.com](mailto:mkosoglad@blockandco.com)





# MISSION WEST SHOPPING CENTER

## PRIME RETAIL SPACES FOR LEASE

Johnson Dr. & Martway St., Mission, KS | A Kansas City Suburb

### SITE PLAN



←  
Shawnee  
Mission  
North  
High  
School



#	Name	SF	Address
A	Kansas Drivers License Bureau	6,000 SF	6507 Johnson Drive
B	AVAILABLE	5,600 SF	6511 Johnson Drive
C	The Other Place	4,050 SF	6522 Martway Street
D	Great Tanz	1,300 SF	6520 Martway Street
E	AVAILABLE	1,300 SF	6518 Martway Street
F	AVAILABLE	1,650 SF	6516 Martway Street
G	Laundry Craft	3,200 SF	6514 Martway Street
H	Los Gallitos	3,200 SF	6508 Martway Street
I	Empire Pets Salon & Boutique	1,750 SF	6506 Martway Street
J	Thai Orchid Restaurant	1,750 SF	6504 Martway Street
K	AVAILABLE	2,000 SF	6500 Martway Street
L	American Honey Hair Company	2,450 SF	6600 Martway Street
M	Dollar Tree	12,062 SF	6620 Martway Street
N	Planet Fitness	29,360 SF	6765 Johnson Drive
O	AVAILABLE	9,473 SF	6753 Johnson Drive
P	Slim Chickens	2,333 SF	6591 Johnson Drive





# MISSION WEST SHOPPING CENTER

## PRIME RETAIL SPACES FOR LEASE

Johnson Dr. & Martway St., Mission, KS | A Kansas City Suburb

DRONE PHOTO NW





# MISSION WEST SHOPPING CENTER

## PRIME RETAIL SPACES FOR LEASE

Johnson Dr. & Martway St., Mission, KS | A Kansas City Suburb

### DRONE PHOTO SE



All information furnished regarding property for sale or lease is from sources deemed reliable, but no warranty or representation is made as to the accuracy thereof and the same is subject to errors, omissions, changes of prices, rental or other conditions, prior sale or lease or withdrawal without notice.



# MISSION WEST SHOPPING CENTER

## PRIME RETAIL SPACES FOR LEASE

Johnson Dr. & Martway St., Mission, KS | A Kansas City Suburb

AERIAL



All information furnished regarding property for sale or lease is from sources deemed reliable, but no warranty or representation is made as to the accuracy thereof and the same is subject to errors, omissions, changes of prices, rental or other conditions, prior sale or lease or withdrawal without notice.



# MISSION WEST SHOPPING CENTER

## PRIME RETAIL SPACES FOR LEASE

Johnson Dr. & Martway St., Mission, KS | A Kansas City Suburb

### PHOTOS



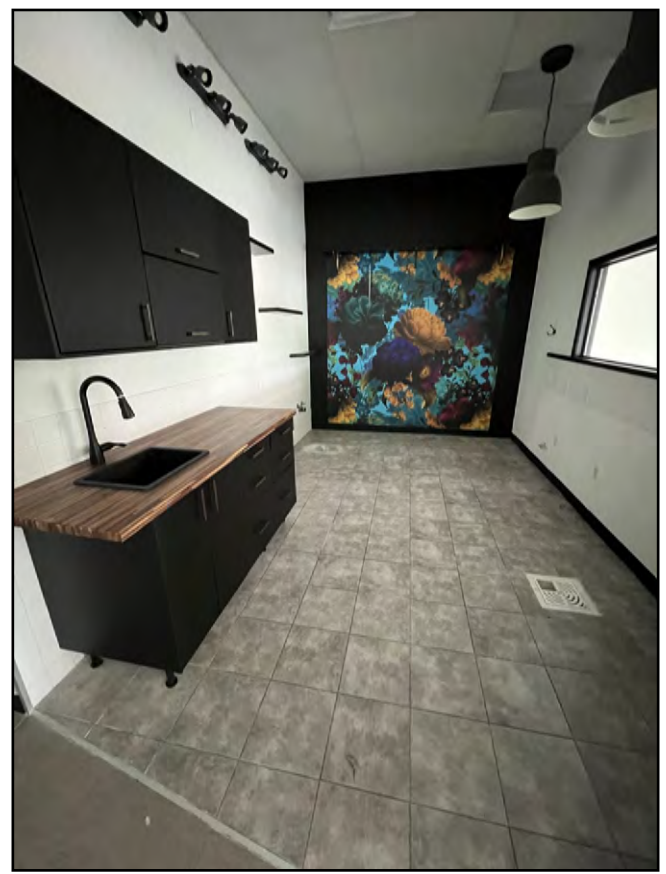
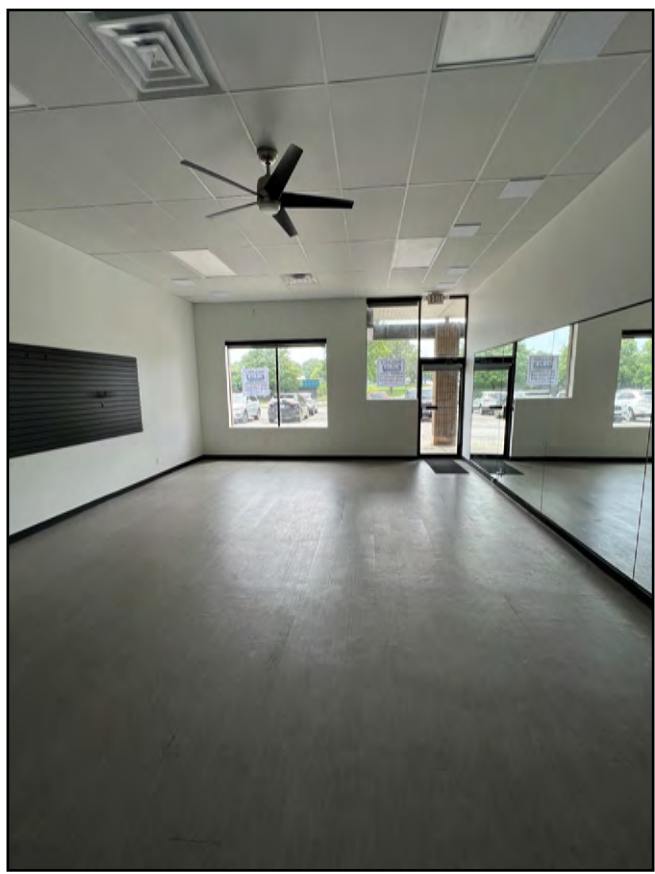
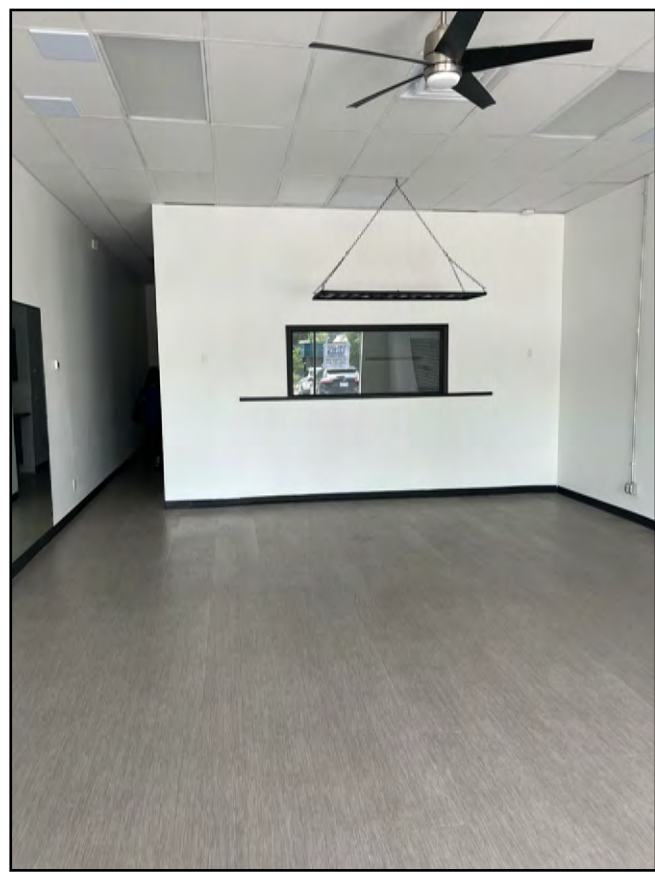


# MISSION WEST SHOPPING CENTER

## PRIME RETAIL SPACES FOR LEASE

Johnson Dr. & Martway St., Mission, KS | A Kansas City Suburb

### 1,300 SF SPACE PHOTOS



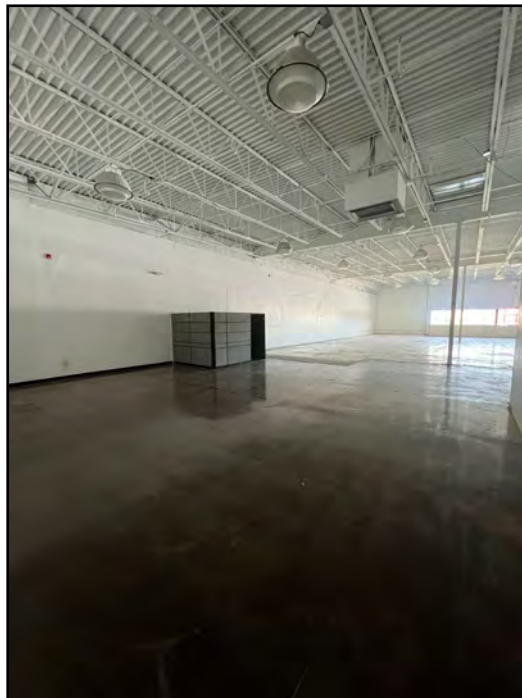


# MISSION WEST SHOPPING CENTER

## PRIME RETAIL SPACES FOR LEASE

Johnson Dr. & Martway St., Mission, KS | A Kansas City Suburb

9,473 SF SPACE PHOTOS





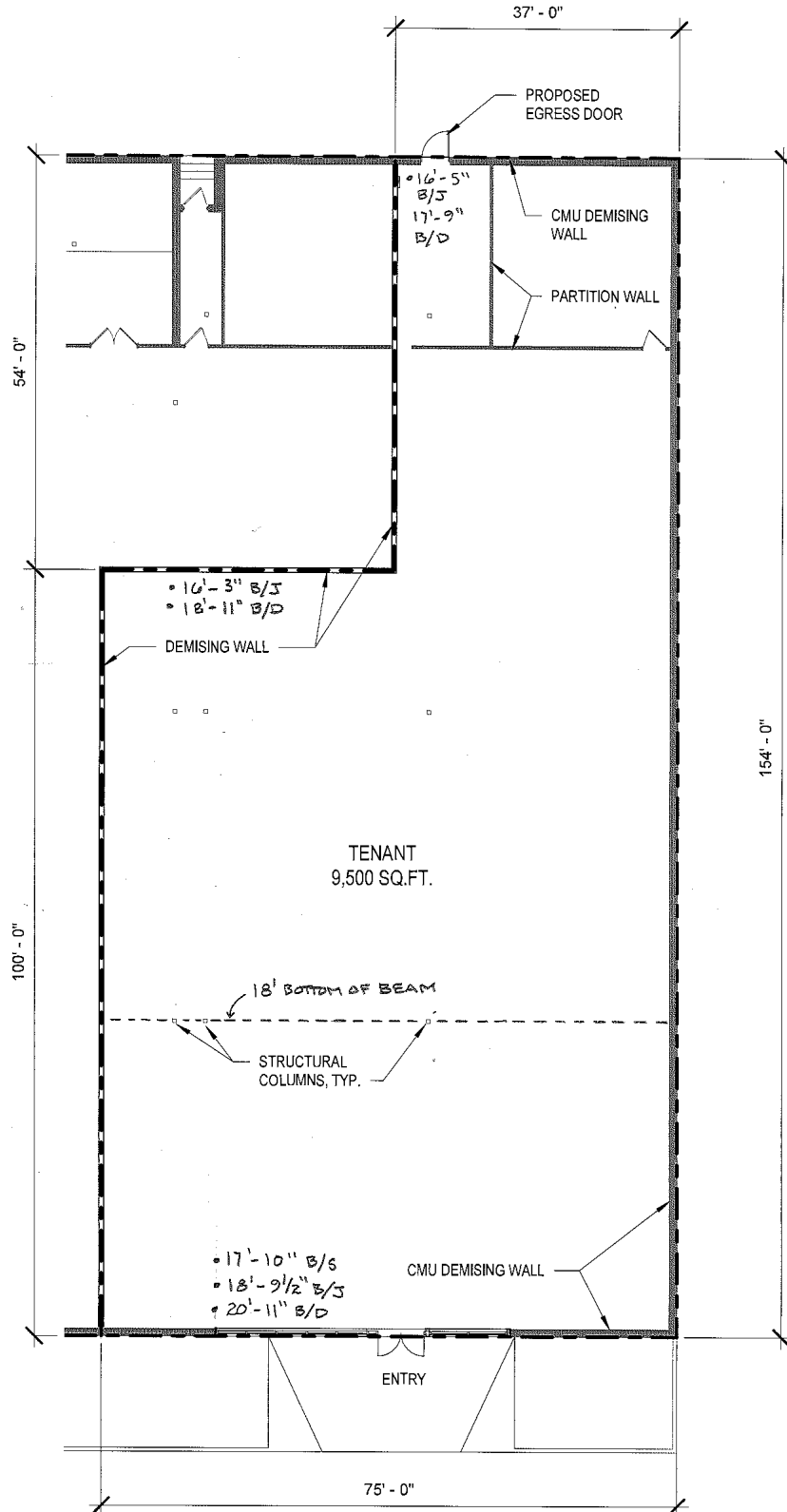


# MISSION WEST SHOPPING CENTER

## PRIME RETAIL SPACES FOR LEASE

Johnson Dr. & Martway St., Mission, KS | A Kansas City Suburb

### 9,473 SF END CAP SPACE FLOOR PLAN



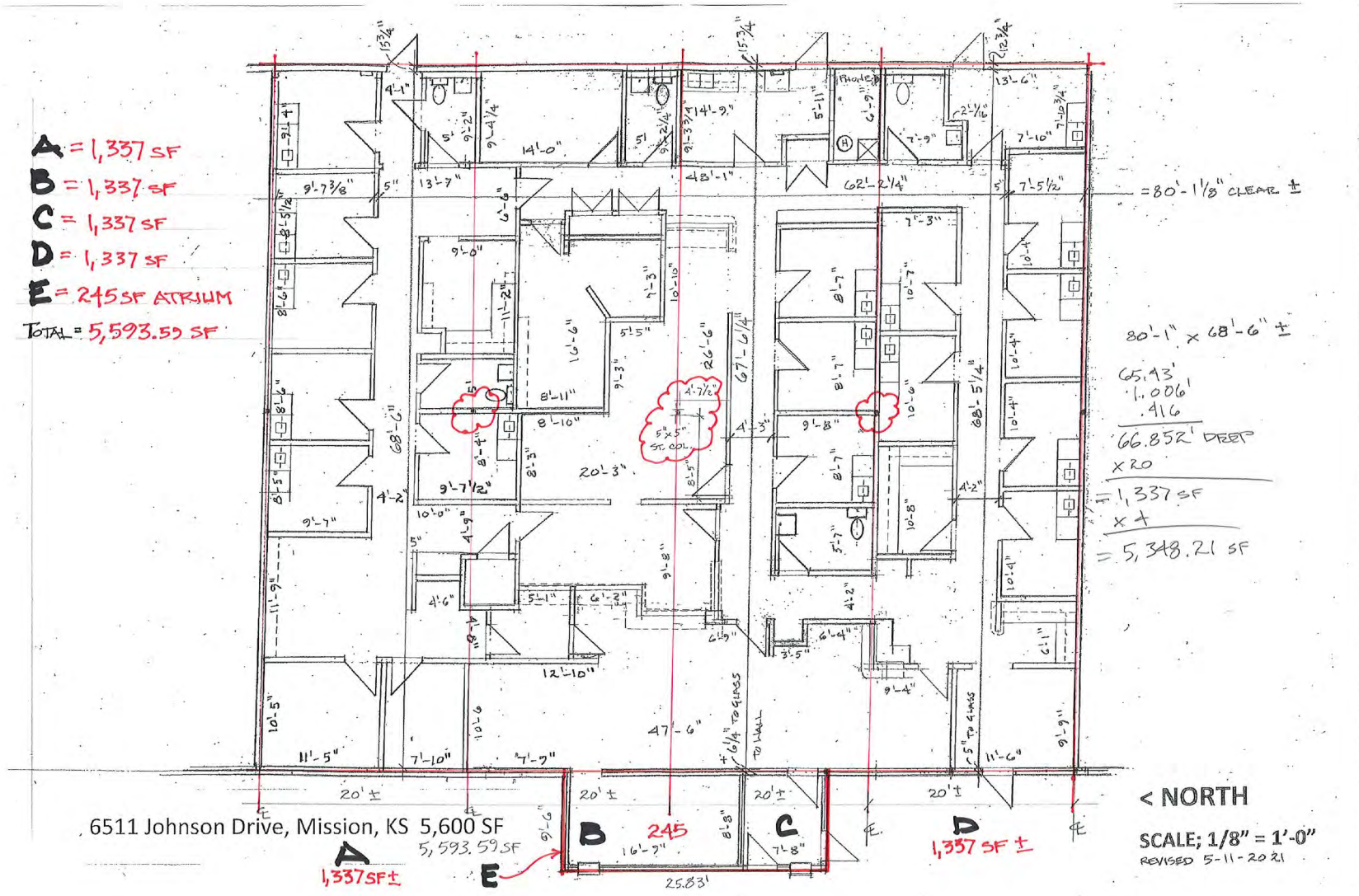


# MISSION WEST SHOPPING CENTER PRIME RETAIL SPACES FOR LEASE

Johnson Dr. & Martway St., Mission, KS | A Kansas City Suburb

## 5,600 SF FORMER MEDICAL OFFICE SPACE FLOOR PLAN

**A** = 1,337 SF  
**B** = 1,337 SF  
**C** = 1,337 SF  
**D** = 1,337 SF  
**E** = 245 SF ATRIUM  
**TOTAL** = 5,593.59 SF



6511 Johnson Drive, Mission, KS 5,600 SF  
5,593.59 SF

< NORTH  
 SCALE: 1/8" = 1'-0"  
 REVISED 5-11-20 21

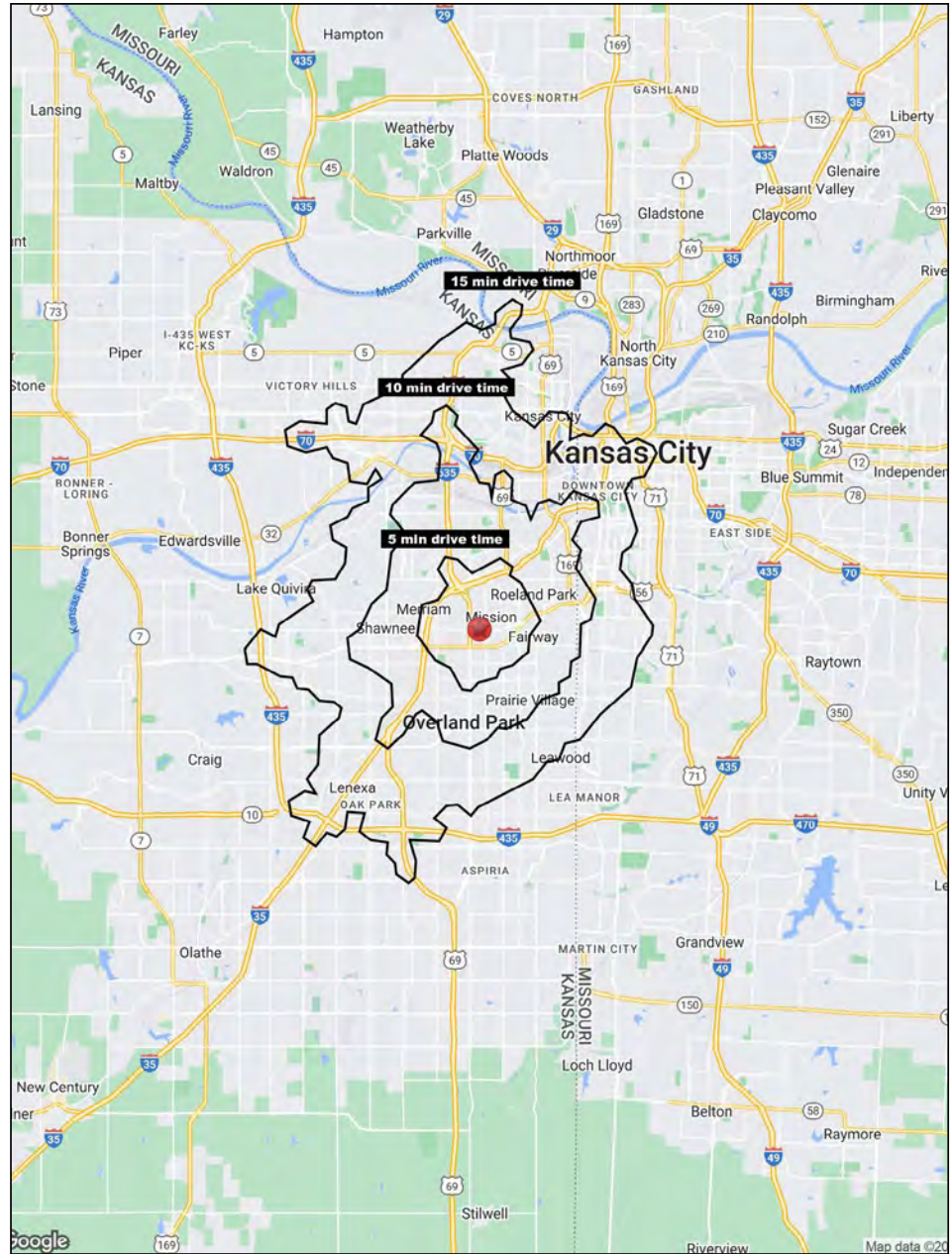
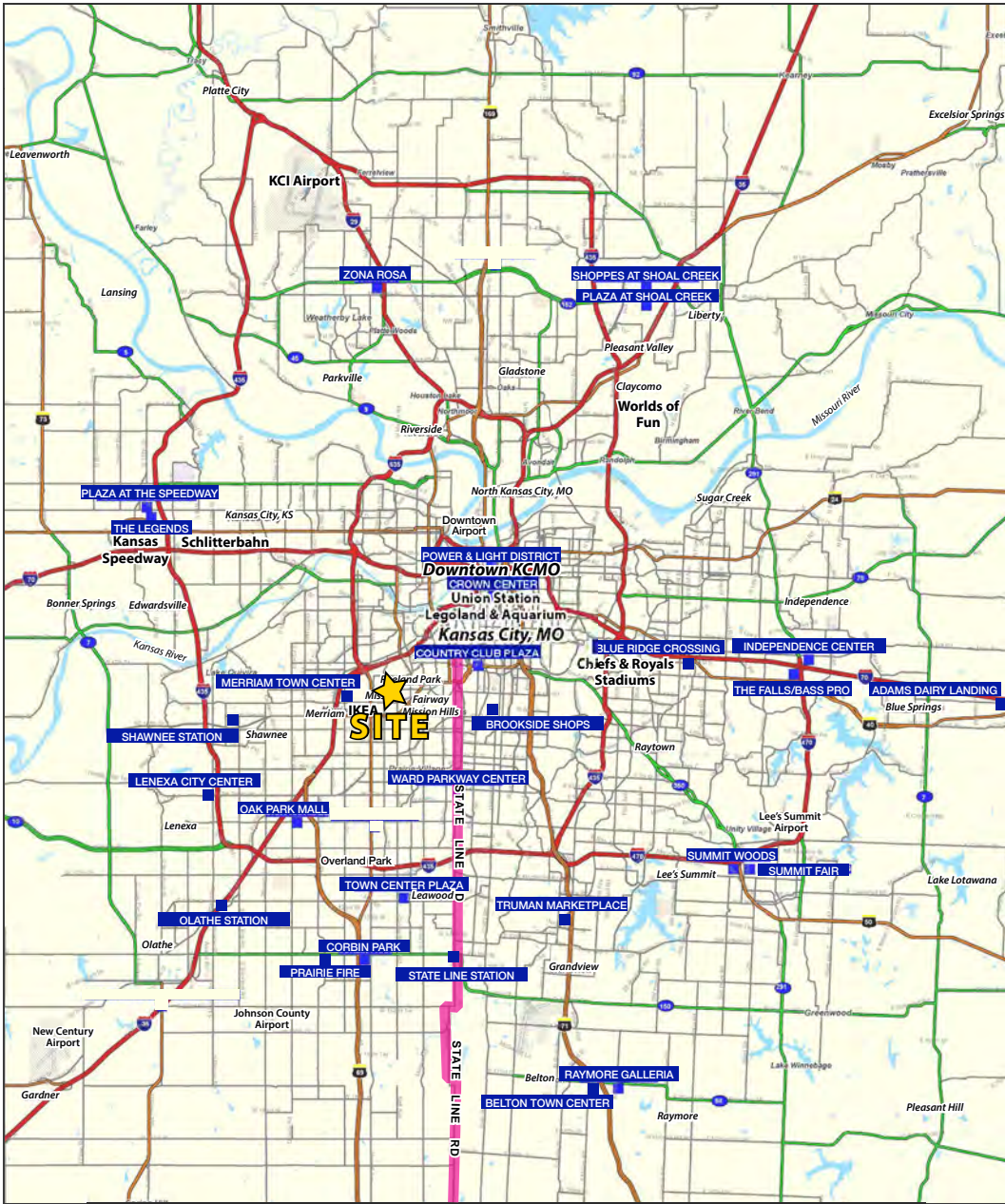




All information furnished regarding property for sale or lease is from sources deemed reliable, but no warranty or representation is made as to the accuracy thereof and the same is subject to errors, omissions, changes of prices, rental or other conditions, prior sale or lease or withdrawal without notice.



# MISSION WEST SHOPPING CENTER PRIME RETAIL SPACES FOR LEASE

Johnson Dr. & Martway St., Mission, KS | A Kansas City Suburb



Block & Company, Inc., Realtors | 605 W. 47th Street, Ste. 200, Kansas City, MO 64112 | 816.753.6000 | [www.blockandco.com](http://www.blockandco.com)   

All information furnished regarding property for sale or lease is from sources deemed reliable, but no warranty or representation is made as to the accuracy thereof and the same is subject to errors, omissions, changes of prices, rental or other conditions, prior sale or lease or withdrawal without notice.



# MISSION WEST SHOPPING CENTER

## PRIME RETAIL SPACES FOR LEASE

Johnson Dr. & Martway St., Mission, KS | A Kansas City Suburb

Johnson Drive & Riggs Avenue	5 min	10 min	15 min
Mission, KS 66202	drive time	drive time	drive time
<b>Population</b>			
2022 Estimated Population	27,784	126,665	363,633
2027 Projected Population	28,336	129,157	373,378
2020 Census Population	27,547	126,459	359,483
2010 Census Population	26,786	122,710	342,113
Projected Annual Growth 2022 to 2027	0.4%	0.4%	0.5%
Historical Annual Growth 2010 to 2022	0.3%	0.3%	0.5%
2022 Median Age	37.8	37.7	37.7
<b>Households</b>			
2022 Estimated Households	13,482	55,699	159,613
2027 Projected Households	14,012	57,583	165,118
2020 Census Households	13,270	55,153	157,650
2010 Census Households	12,833	53,761	147,727
Projected Annual Growth 2022 to 2027	0.8%	0.7%	0.7%
Historical Annual Growth 2010 to 2022	0.4%	0.3%	0.7%
<b>Race and Ethnicity</b>			
2022 Estimated White	80.9%	74.4%	69.5%
2022 Estimated Black or African American	5.2%	7.2%	10.9%
2022 Estimated Asian or Pacific Islander	2.8%	3.0%	3.9%
2022 Estimated American Indian or Native Alaskan	0.3%	0.6%	0.5%
2022 Estimated Other Races	10.8%	14.9%	15.2%
2022 Estimated Hispanic	11.6%	17.1%	17.3%
<b>Income</b>			
2022 Estimated Average Household Income	\$85,539	\$91,312	\$93,726
2022 Estimated Median Household Income	\$77,440	\$75,643	\$75,193
2022 Estimated Per Capita Income	\$41,546	\$40,259	\$41,312
<b>Education (Age 25+)</b>			
2022 Estimated Elementary (Grade Level 0 to 8)	2.0%	3.0%	3.9%
2022 Estimated Some High School (Grade Level 9 to 11)	2.4%	4.0%	4.4%
2022 Estimated High School Graduate	14.7%	20.1%	18.7%
2022 Estimated Some College	19.9%	18.6%	17.8%
2022 Estimated Associates Degree Only	7.8%	8.0%	7.2%
2022 Estimated Bachelors Degree Only	32.1%	28.4%	29.2%
2022 Estimated Graduate Degree	21.1%	17.9%	18.9%
<b>Business</b>			
2022 Estimated Total Businesses	1,535	5,047	18,424
2022 Estimated Total Employees	20,173	67,298	316,498
2022 Estimated Employee Population per Business	13.1	13.3	17.2
2022 Estimated Residential Population per Business	18.1	25.1	19.7

©2023, Sites USA, Chandler, Arizona, 480-491-1112 Demographic Source: Applied Geographic Solutions 11/2022, TIGER Geography - RS1

