

## PROPERTY INFORMATION

Property: 633 Spring St,  
Paso Robles, CA 93446

Lease Rate: \$1.75/SF NNN (± \$0.60)

Lease Size: ±931 sq. ft.

Type: Retail or Professional Office

Zoning: CR (Commercial Retail)

Parking: Ample

### HIGHLIGHTS:

**Prime Retail Space in Downtown Paso Robles - 931 sq ft for \$1.75/sq ft**

This 931 sq ft retail space is ideally located in the heart of Downtown Paso Robles, surrounded by shopping, restaurants, and entertainment options. Situated on the bustling 600 block of Spring Street, this property offers unparalleled exposure and visibility for your business. Don't miss this opportunity to establish your presence in one of the most vibrant areas of Paso Robles.

### CONTACT:

ROD TRUJILLO

OWNER/BROKER

DRE #01388764

CELL: 805.703.0999

[ROD@TRUJILLO-GROUP.COM](mailto:ROD@TRUJILLO-GROUP.COM)

The information contained herein has been obtained from the owner of the property or from other sources deemed reliable. While we have no reason to doubt its accuracy, we do not guarantee it.

**FOR LEASE**  
**±931 SQ. FT. PRIME RETAIL OR**  
**PROFESSIONAL SPACE**



**TRUJILLO**  
Commercial Real Estate  
**GROUP**

570 Marsh St | San Luis Obispo, CA 93401  
[www.Trujillo-Group.com](http://www.Trujillo-Group.com)

# PROPERTY PHOTOS

FOR LEASE  
± 931 SQ. FT. PRIME RETAIL OR  
PROFESSIONAL SPACE

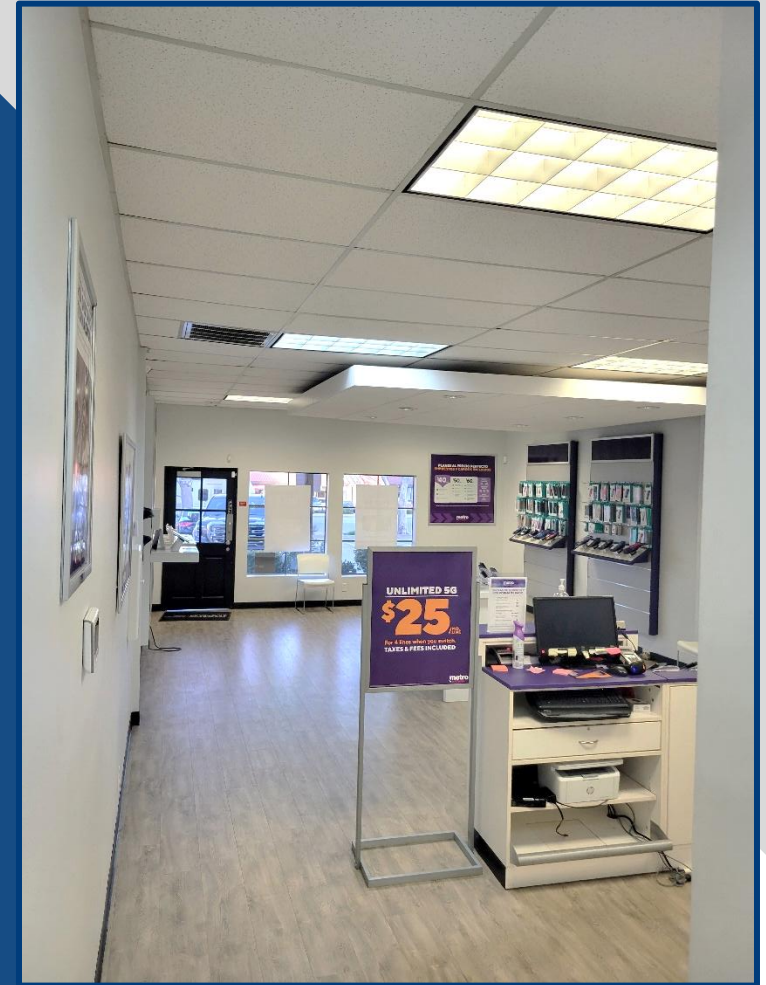
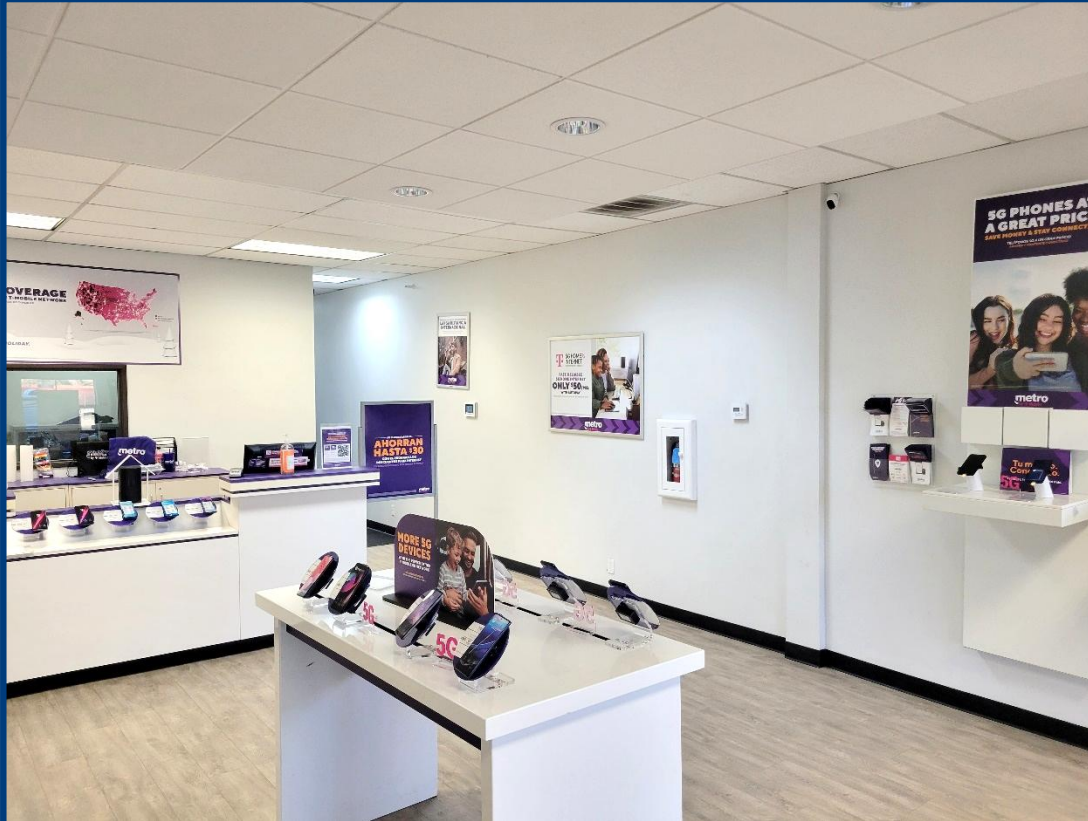


**TRUJILLO**  
Commercial Real Estate  
**GROUP**

570 Marsh St | San Luis Obispo, CA 93401  
[www.Trujillo-Group.com](http://www.Trujillo-Group.com)

# INTERIOR PHOTOS

FOR LEASE  
±931 SQ. FT. PRIME RETAIL OR  
PROFESSIONAL SPACE



## CONTACT:

ROD TRUJILLO

OWNER/BROKER : DRE #01388764

CELL: 805.703.0999

ROD@TRUJILLO-GROUP.COM

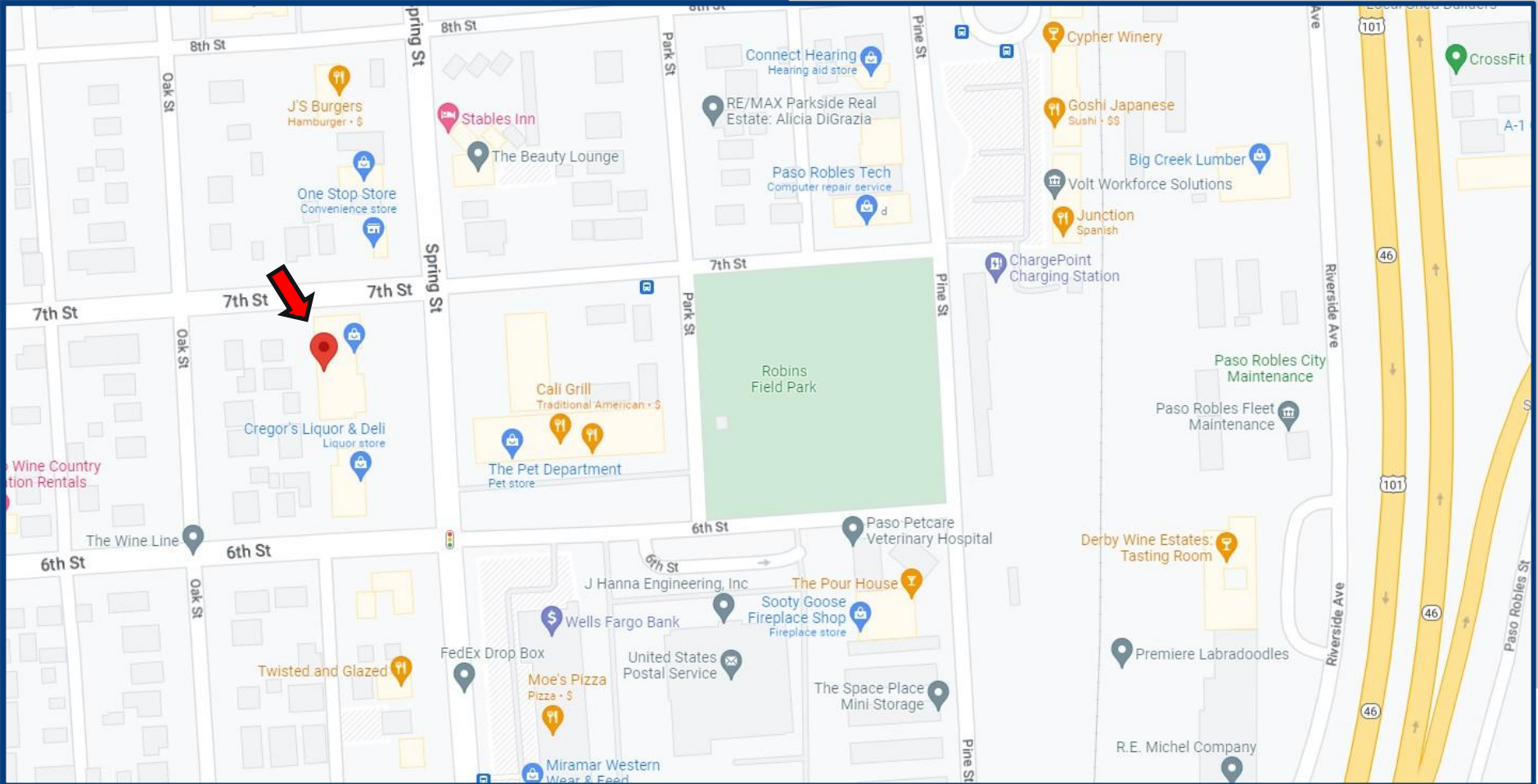


570 Marsh St | San Luis Obispo, CA 93401

www.Trujillo-Group.com

# SITE MAP

FOR LEASE  
±931 SQ. FT. PRIME RETAIL OR  
PROFESSIONAL SPACE



## CONTACT:

ROD TRUJILLO

OWNER/BROKER : DRE #01388764

CELL: 805.703.0999

ROD@TRUJILLO-GROUP.COM



570 Marsh St | San Luis Obispo, CA 93401