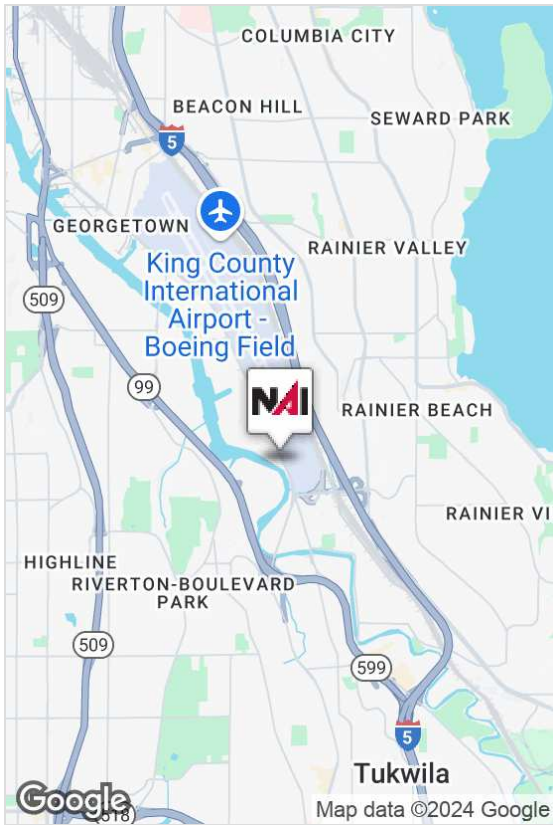


For Lease

2.68 Acres Industrial Land



"Available for Long Term Leases" 5 year minimum



10215 East Marginal Way S

Tukwila, WA

- 2.68 acres (116,557 SF), graveled/paved, fenced
- Zoning: MIC/H; Tukwila Jurisdiction Property
- Rate: \$0.50 PSF + NNN (Estimated \$0.10 PSF)
- Total Monthly Rent: \$69,934

For more information:

Bob Swain, CCIM

Partner • +1 425 586 5622 • bswain@nai-psp.com

Matthew Hopkins

Associate • +1 425 586 5635 • mhopkins@nai-psp.com



BELLEVUE | TACOMA

10900 NE 8th Street, Suite 1500
Bellevue, WA 98004
+1 425 586 5600
nai-psp.com

THE INFORMATION CONTAINED HEREIN HAS BEEN GIVEN TO US BY THE OWNER OF THE PROPERTY OR OTHER SOURCES WE DEEM RELIABLE, WE HAVE NO REASON TO DOUBT ITS ACCURACY, BUT WE DO NOT GUARANTEE IT. ALL INFORMATION SHOULD BE VERIFIED PRIOR TO PURCHASE OR LEASE.

Land for Lease

10215 East Marginal Way S



BELLEVUE | TACOMA

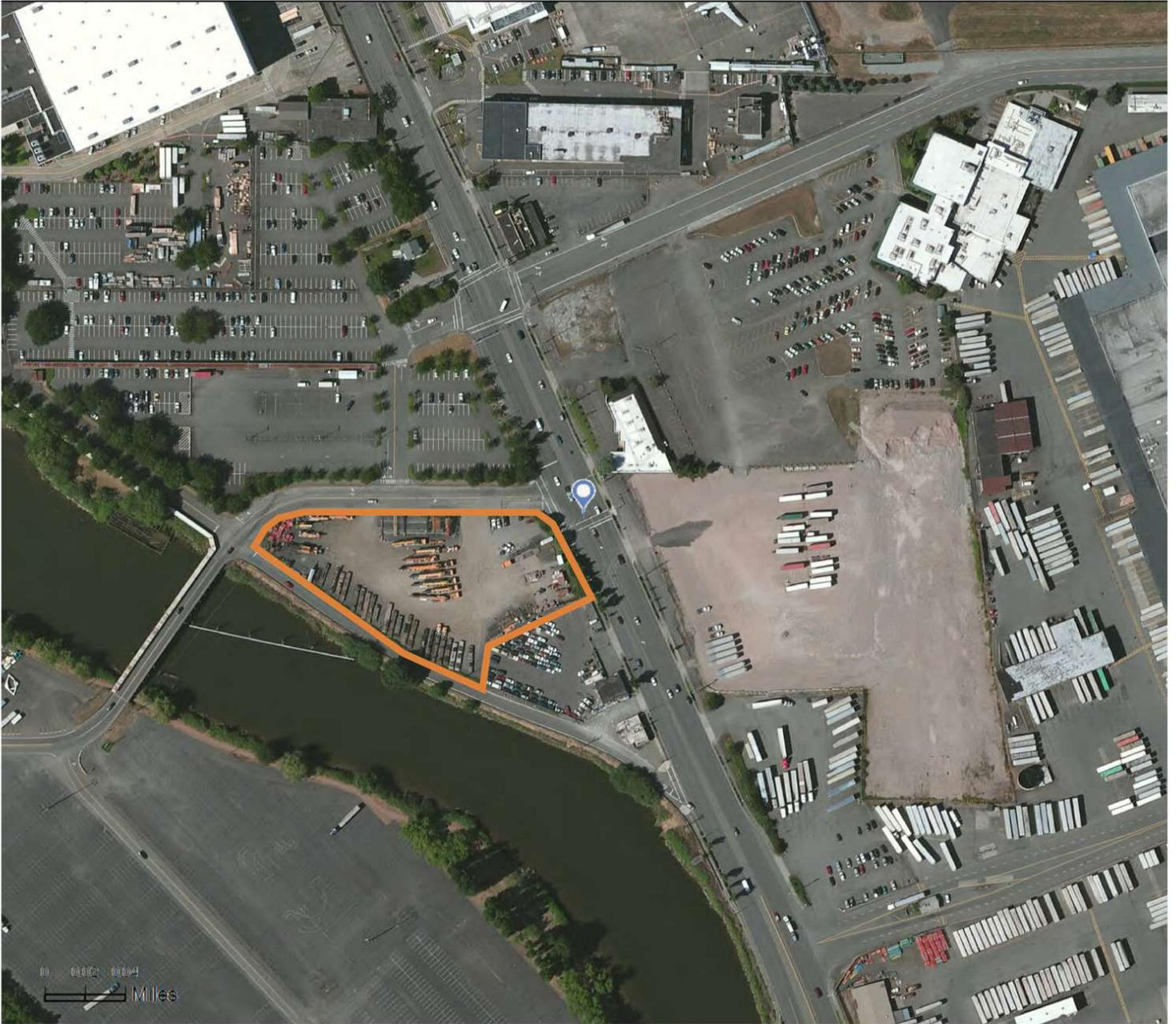
10900 NE 8th Street, Suite 1500
Bellevue, WA 98004
+1 425 586 5600

nai-psp.com

THE INFORMATION CONTAINED HEREIN HAS BEEN GIVEN TO US BY THE OWNER OF THE PROPERTY OR OTHER SOURCES WE DEEM RELIABLE, WE HAVE NO REASON TO DOUBT ITS ACCURACY, BUT WE DO NOT GUARANTEE IT. ALL INFORMATION SHOULD BE VERIFIED PRIOR TO PURCHASE OR LEASE.

Land for Lease

10215 East Marginal Way S



BELLEVUE | TACOMA

10900 NE 8th Street, Suite 1500

Bellevue, WA 98004

+1 425 586 5600

nai-psp.com

THE INFORMATION CONTAINED HEREIN HAS BEEN GIVEN TO US BY THE OWNER OF THE PROPERTY OR OTHER SOURCES WE DEEM RELIABLE, WE HAVE NO REASON TO DOUBT ITS ACCURACY, BUT WE DO NOT GUARANTEE IT. ALL INFORMATION SHOULD BE VERIFIED PRIOR TO PURCHASE OR LEASE.