

SALE

0 JASONWAY AVE

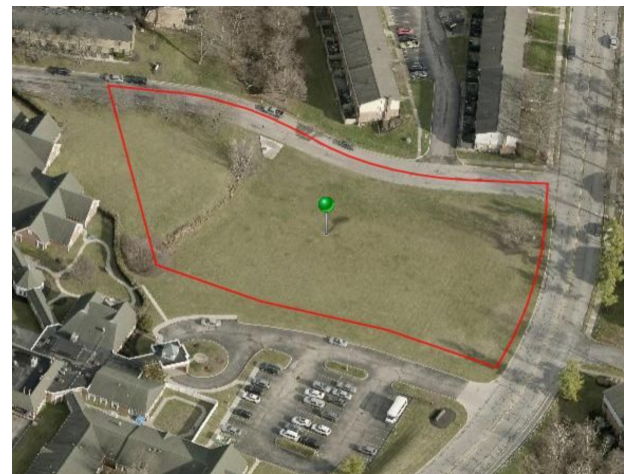
0 Jasonway Ave Columbus, OH 43214

PROPERTY DESCRIPTION

0 Jasonway Ave, Columbus, OH, with zoning in CPD-H-35, presents a versatile opportunity for a range of commercial endeavors. With its convenient location in the Columbus area, this property is an ideal choice for those seeking a strategic investment in land for potential office space. Whether you envision an innovative office space or a dynamic mixed-use development, this property's potential is unmatched.

PROPERTY HIGHLIGHTS

- Zoning: CPD (Commercial Planned Development)
- Height District: 35'
- Ideal site for office/medical office development, multifamily, neighborhood retail.
- Located adjacent to Columbus Alzheimers Care Center
- Jasonway is a main connector for two major thoroughfares being Henderson Road & Bethel Road with immediate access on both to 315
- Contact Broker for survey and civil/geo reports that illustrate buildable area.



OFFERING SUMMARY

Sale Price:	Negotiable
Lot Size:	1.57 Acres

PROPERTY WEBSITE

bit.ly/0JasonwayAve

Bill Davis

(614) 588-7561

bdavis@cbc-aspire.com

Katrina Stapleton

(810) 964-8855

kstapleton@cbc-aspire.com



**COLDWELL BANKER
COMMERCIAL** | **ASPIRE REALTY
SERVICES**

SALE

0 JASONWAY AVE

0 Jasonway Ave Columbus, OH 43214



Bill Davis

(614) 588-7561

bdavis@cbc-aspire.com

Katrina Stapleton

(810) 964-8855

kstapleton@cbc-aspire.com

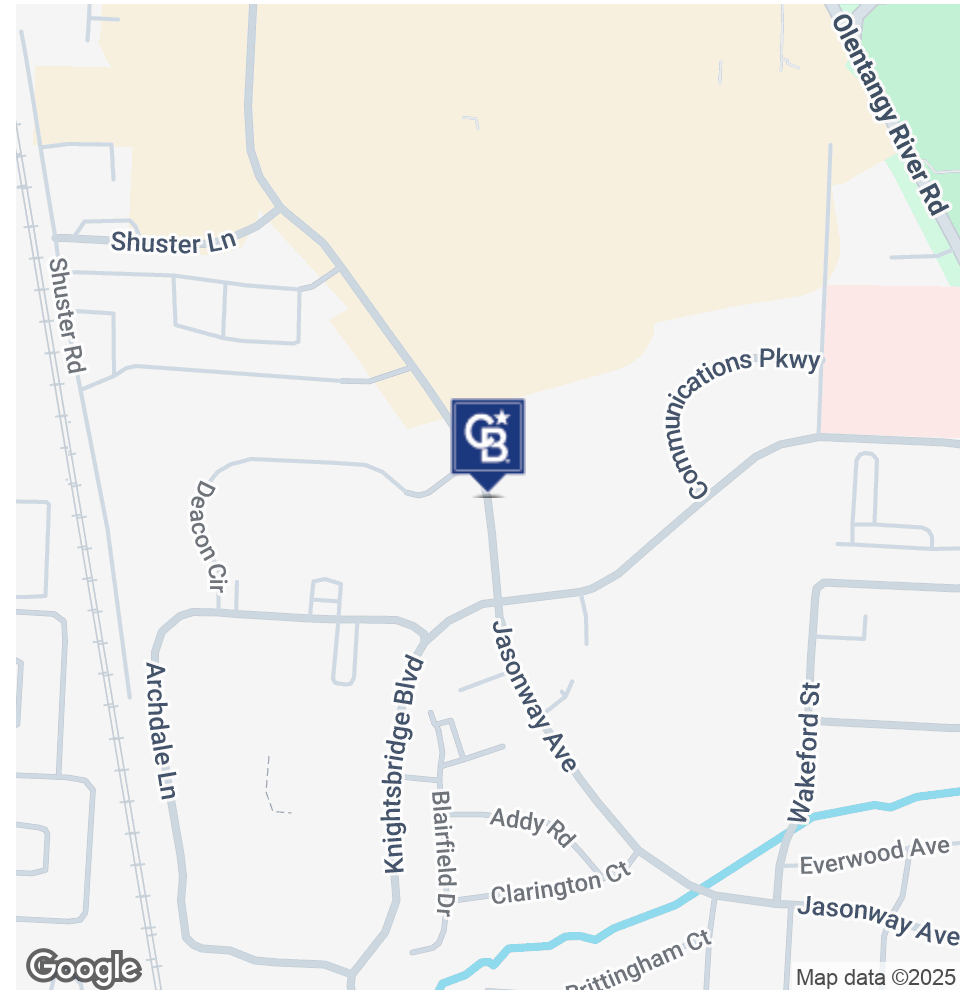
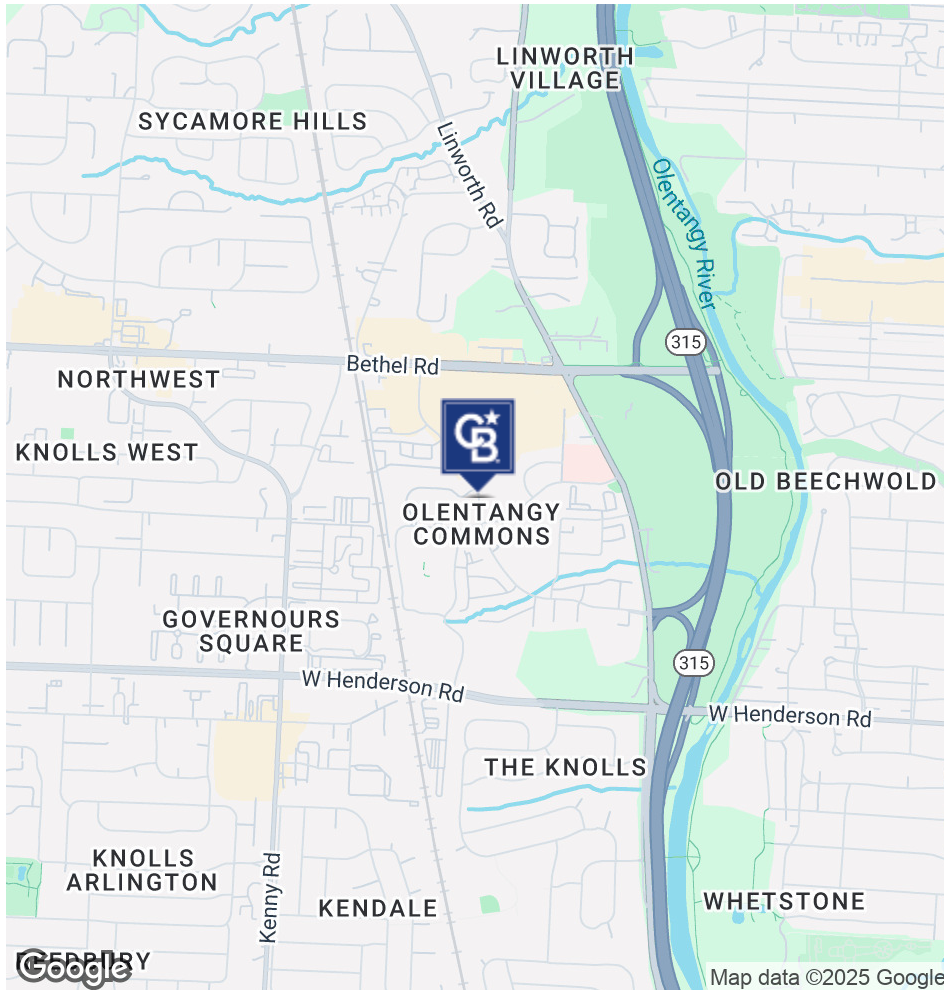


**COLDWELL BANKER
COMMERCIAL** | **ASPIRE REALTY
SERVICES**

SALE

0 JASONWAY AVE

0 Jasonway Ave Columbus, OH 43214



Bill Davis

(614) 588-7561

bdavis@cbc-aspire.com

Katrina Stapleton

(810) 964-8855

kstapleton@cbc-aspire.com



**COLDWELL BANKER
COMMERCIAL** | **ASPIRE REALTY
SERVICES**

SALE

0 JASONWAY AVE

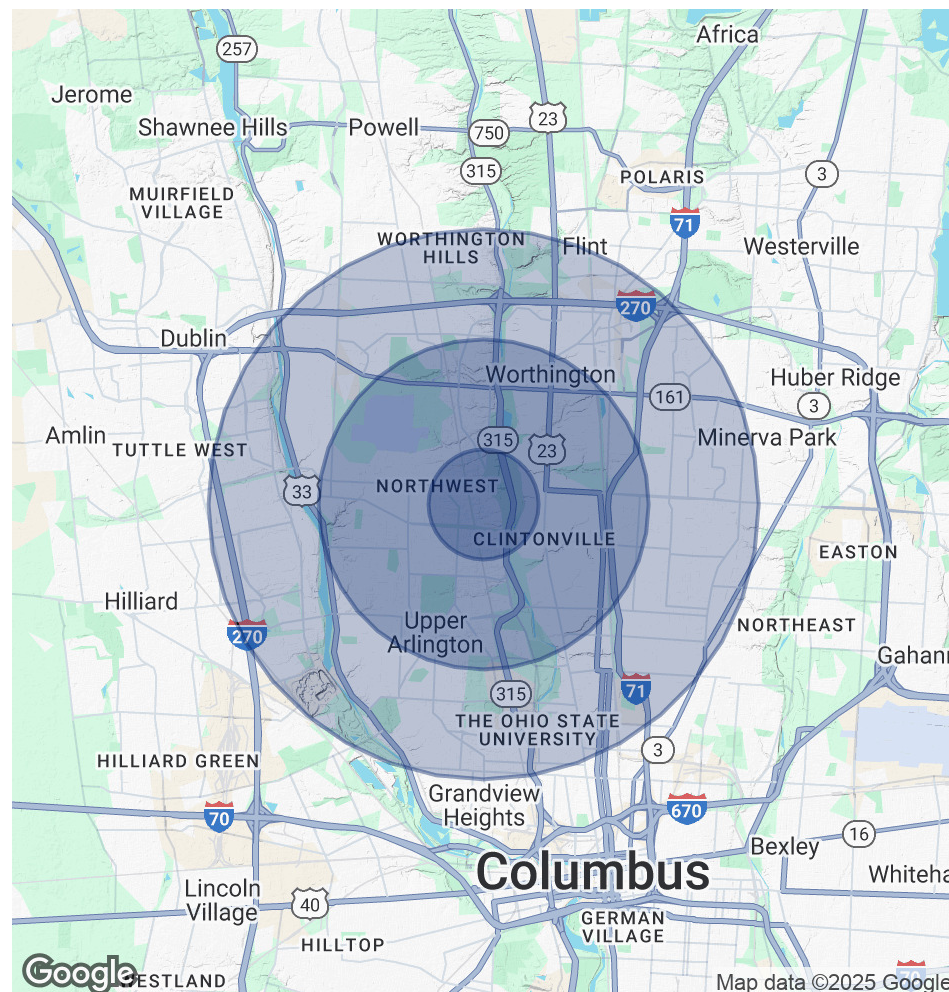
0 Jasonway Ave Columbus, OH 43214

POPULATION	1 MILE	3 MILES	5 MILES
Total Population	13,731	104,765	360,476
Average Age	40	41	37
Average Age (Male)	38	40	36
Average Age (Female)	42	42	38

HOUSEHOLDS & INCOME	1 MILE	3 MILES	5 MILES
Total Households	6,975	48,271	152,014
# of Persons per HH	2	2.2	2.4
Average HH Income	\$97,194	\$120,723	\$103,375
Average House Value	\$335,599	\$414,830	\$357,016

Demographics data derived from AlphaMap

TRAFFIC COUNTS & CROSS STREETS	DIRECTION	YEAR	COUNTS
Jasonway Ave & Olentangy River Rd	E	2024	2,805 AADT
Jasonway Ave & Knightsbridge Blvd	E	2024	2,439 AADT



Bill Davis
(614) 588-7561
bdavis@cbc-aspire.com

Katrina Stapleton
(810) 964-8855
kstapleton@cbc-aspire.com

