

OFFICE/ RETAIL OPPORTUNITY

393 Eddy Street | Providence, RI 02903

INCLUDES ±16
PARKING
SPACES





393 Eddy Street
Providence, RI

PROPERTY OVERVIEW

PROPERTY DESCRIPTION

CBRE is pleased to announce the availability of office or retail space for lease at 393 Eddy Street in Providence, Rhode Island. A former iconic design studio that is ready for its next iteration, 393 Eddy Street is located at a main entrance point of the Jewelry District (Eddy and Point Streets). The Property is in proximity to the Brown University Warren Alpert Medical School, South Street Landing, Cambridge Innovation Center with numerous retail amenities supporting this growing district.

PROPERTY HIGHLIGHTS

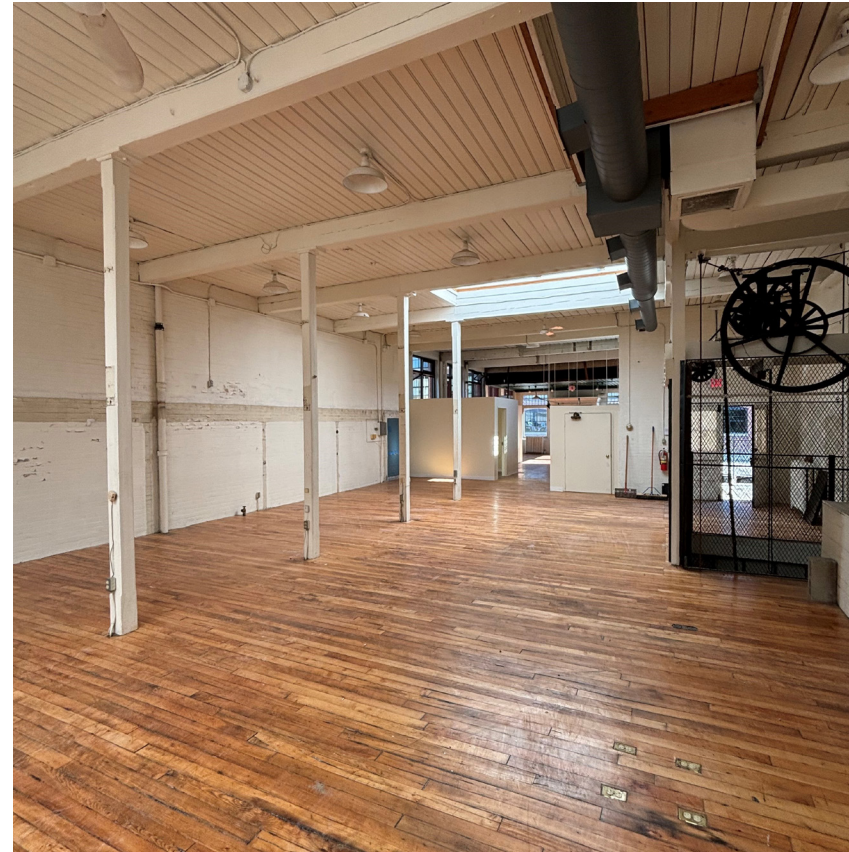
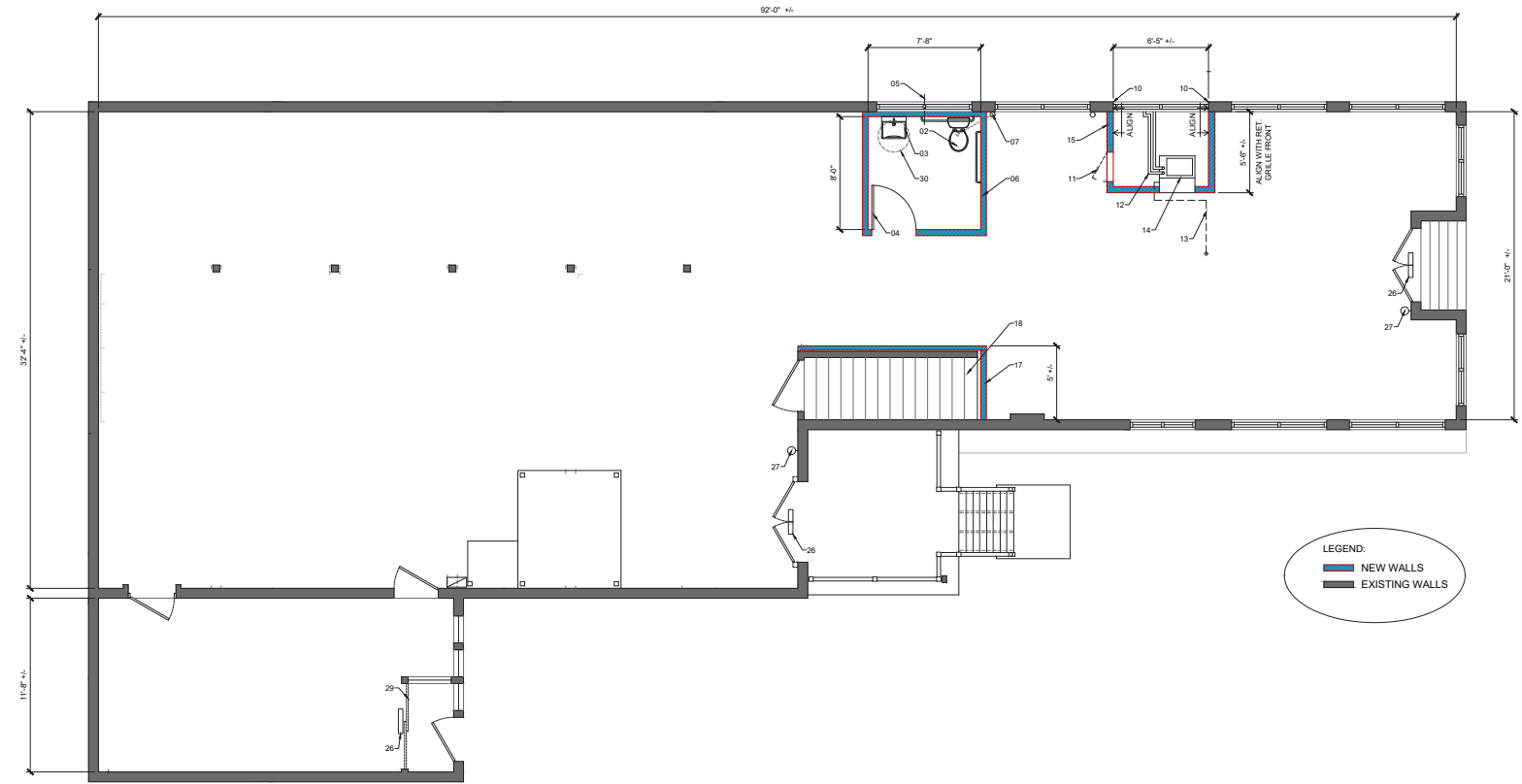
- + ±3,000 SF free standing building opportunity
- + Highly visible at gateway entrance to Jewelry District
- + Immediate access to I-95 & I-195
- + Iconic former design studio
- + Access to Downtown Transit Connector
- + ±16 parking spaces included
- + Recently improved with ADA bathroom


**CONVENIENT
JEWELRY DISTRICT
LOCATION**



**WHOLE BUILDING
LEASE OPPORTUNITY
WITH PARKING**


**IMMEDIATE ACCESS
TO I-95 & I-195**

FLOOR PLAN







BROWN
 Integrated Life
 Science Building
 ±300,000 SF


BROWN
 Brown University
 Molecular Medicine


**THE
 PVD
 LABS**


**THE WARREN ALPERT
 Medical School**


BROWN
 • Center on the Biology of
 Aging
 • RNA Center


cic Cambridge
 Innovation
 Center


**RHODE
 ISLAND
 NURSING
 EDUCATION CENTER**


BROWNHealth
 UNIVERSITY


Care New England


BROWN


BROWN

395 Eddy Street
 Providence, RI


BROWN


BROWN


BROWNHealth
 UNIVERSITY

WALKING DISTANCE TO:

- RHODE ISLAND NURSING EDUCATION CENTER (RINEC)
 ±45 SECONDS
- WARREN ALPERT MEDICAL SCHOOL OF BROWN
 UNIVERSITY
 ±1.5 MINUTES
- CAMBRIDGE INNOVATION CENTER @ 225 DYER STREET
 ±3 MINUTES

EDDY STREET

POINT STREET

95



393 Eddy Street | Providence, RI 02903

PLEASE CONTACT:

Christian Van Horn

Senior Associate
+1 401 330 1911
christian.vanhorn@cbre.com

Andrew Galvin

Senior Vice President
+1 401 330 1915
andrew.galvin@cbre.com

© 2024 CBRE, Inc. All rights reserved. This information has been obtained from sources believed reliable, but has not been verified for accuracy or completeness. You should conduct a careful, independent investigation of the property and verify all information. Any reliance on this information is solely at your own risk. CBRE and the CBRE logo are service marks of CBRE, Inc. All other marks displayed on this document are the property of their respective owners, and the use of such logos does not imply any affiliation with or endorsement of CBRE. Photos herein are the property of their respective owners. Use of these images without the express written consent of the owner is prohibited.