



Commercial and Industrial Real Estate
Sales and Leasing
Property Management

Joey Betbeze
3345 Halls Mill Road
Mobile, Alabama 36606

Office: 251.476.4111
Cell: 251.554.8145

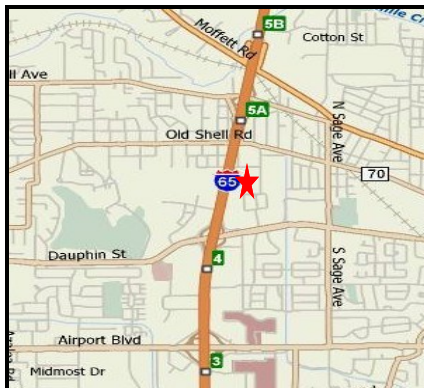
JoeyBetbeze@BetbezeRealty.com
www.BetbezeRealty.com

FOR LEASE

**132 & 134 East I-65 Service Road North
Mobile, Alabama 36606**



View from Interstate 65.
Former Southern Linc space.



- 5,200 sq. ft. Total available
- 4,000 sq. ft. office area.
- 1,200 s.f. storage area.
- Zoned B-3.
- Belfor Restoration occupies 7,800 square feet.
- **\$3,500.00/ Mo.**

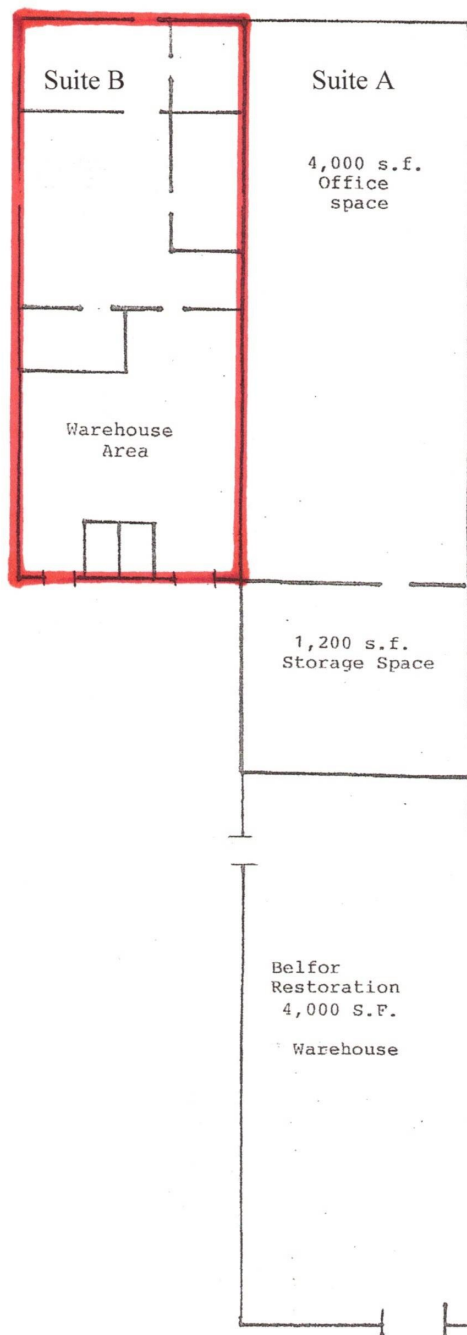


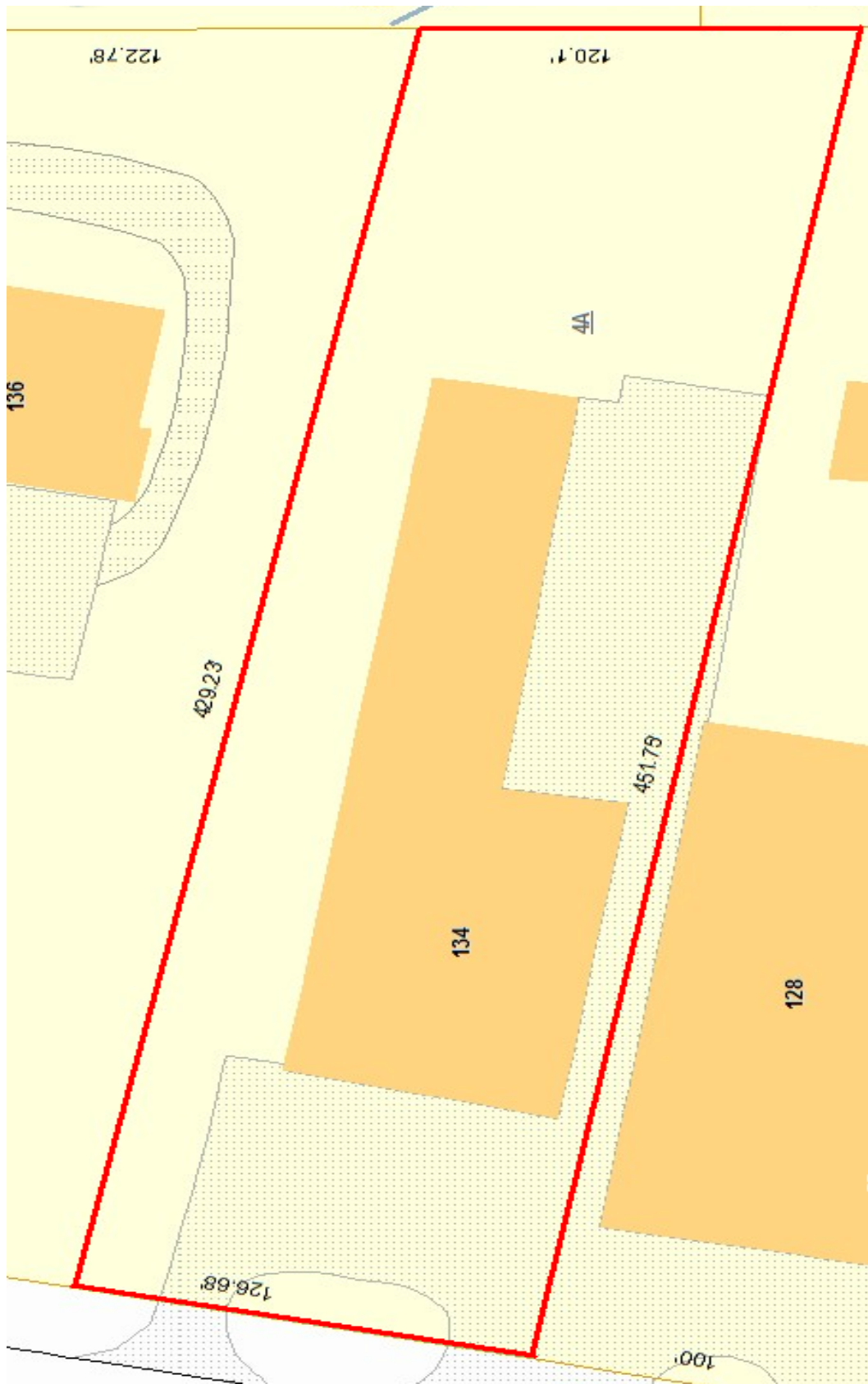
Located approximately 1/2 mile north of the intersection of Dauphin Street and Interstate 65.

The information above has been obtained from sources believed reliable. While we do not doubt its accuracy we have not verified it and make no guarantee, warranty or representation about it. It is your responsibility to independently confirm its accuracy and completeness. Any projections, opinions, assumptions, or estimates used are for example only and do not represent the current or future performance of the property. The value of this transaction to you depends on tax and other factors which should be evaluated by your tax, financial, and legal advisors. You and your advisors should conduct a careful, independent investigation of the property to determine to your satisfaction the suitability of the property for your needs.

132 East I-65 Service Road North
Mobile, AL 36607

Interstate 65





Interstate 65