

OFFICE SPACES AVAILABLE IN MARYLAND FARMS



for more information, contact

TOM CORCORAN

615.351.9254

tcorcoran@southeastventure.com

MICHAEL FINUCANE

615.250.8671

mfinucane@southeastventure.com



SOUTHEAST VENTURE

615.833.8716 / southeastventure.com

NO PARKING

LOADING ZONE

BUILDING INFORMATION



ADDRESS 105 Continental Place
Brentwood, TN 37027

SUBMARKET Brentwood

USE Office

AVAILABLE Suite 160 - 2,750 SF
Suite 200 - 12,486 SF *with demising options*
Suite 250- 4,487 SF

PARKING 4:1000

RATE \$31.00/SF

ADDITIONAL NOTES

Class A Office Building

Updated Lobby and Bathrooms



for more information, contact

SUITE 106 / 2,750 SF

1st Floor

Available June 2026



for more information, contact

SUITE 200 / 12,486 SF

2nd Floor

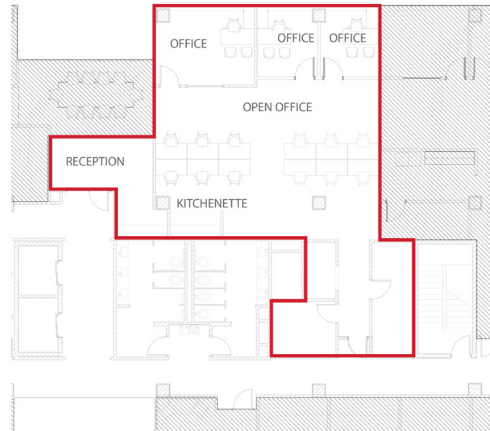


Additional Demising on Next Page

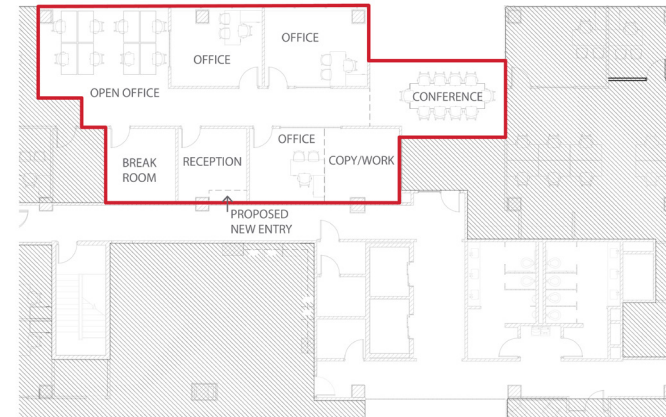
for more information, contact

SUITE 200 / DEMISING OPTIONS

OPTION A 2,158 SF



OPTION B 2,055 SF



OPTION C 10,328 SF



OPTION D 4,216 SF



for more information, contact

SUITE 250 / 4,487 SF

2nd Floor

Available June 1, 2026



for more information, contact

LOCATION



PRIME
Maryland Farms Location
Fronting Old Hickory Blvd.



for more information, contact