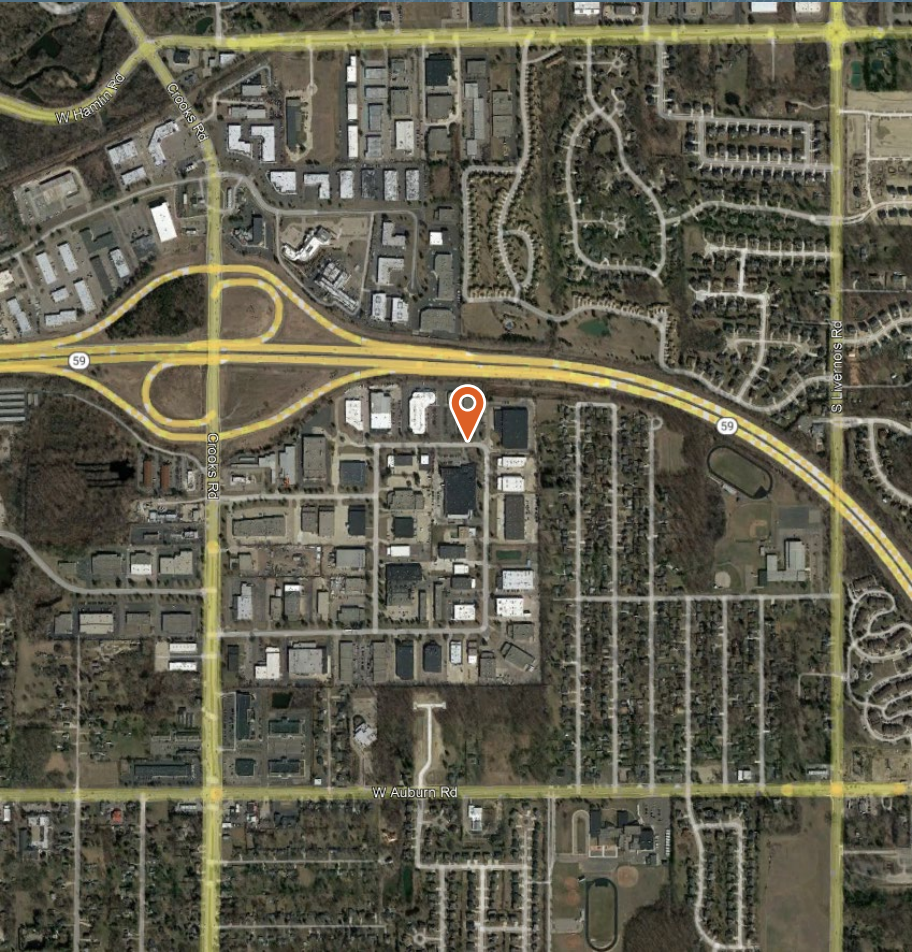


FOR SUBLEASE

2619 PRODUCT DR
ROCHESTER HILLS, MI 48309



Building Information

Center:	Rochester Commerce Commons	Clear Height:	18'
Address:	2619 Product Drive	Sprinklers:	Yes
Property Type	Office/R&D/Flex	Docks:	1
Year Built:	1985	Drive Ins:	None
Available Space:	42,613 SF divisible	Truck Wells:	1
Sublease Rate:	TBD	Parking Ratio:	3.05 / 1,000 SF
Term:	Available through 12/31/27		
Building Notes	Currently built out as office with approximately TBD seats . Furniture can be made available. Conversion to additional flex space can be discussed.		

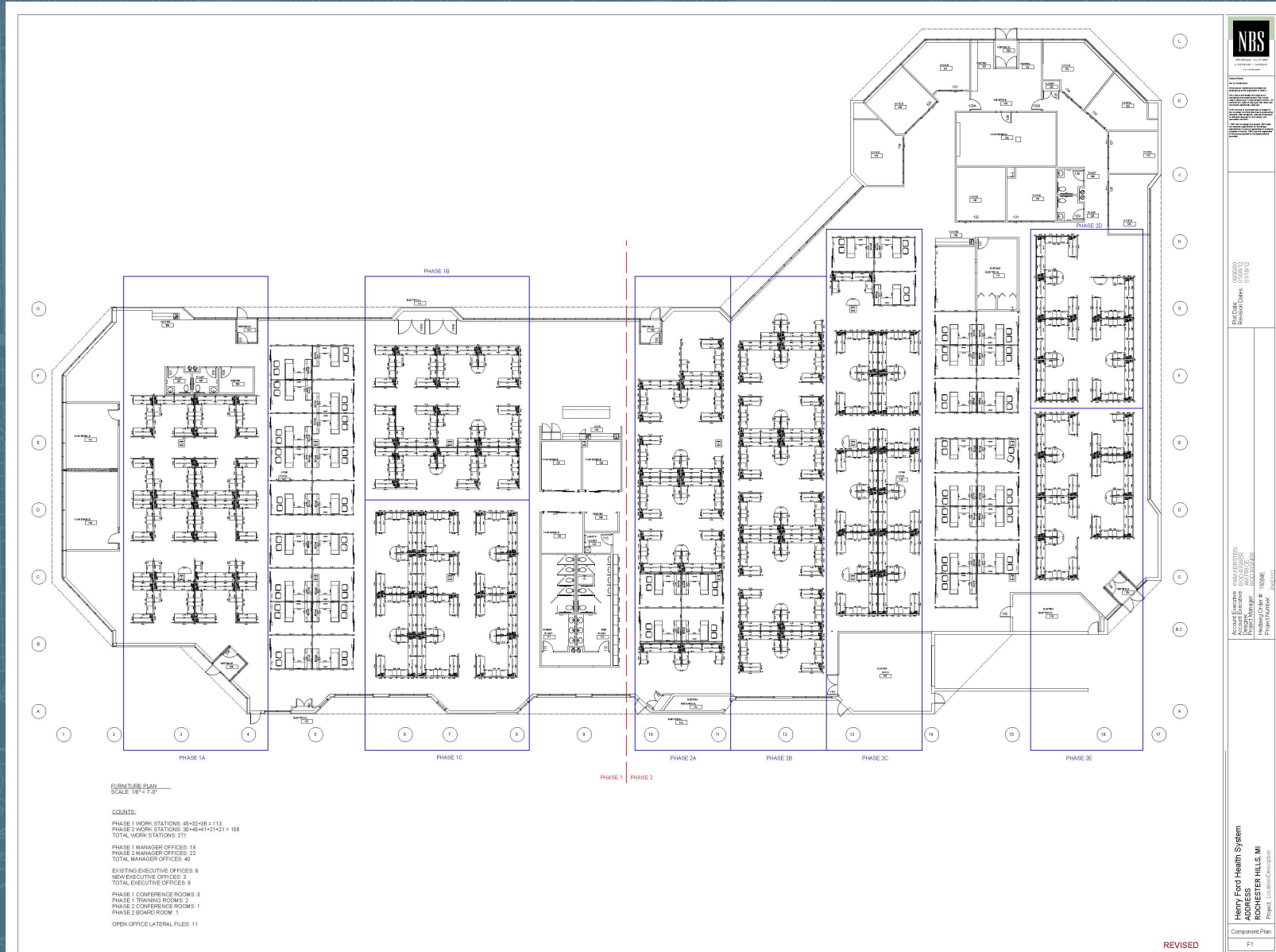
FOR SUBLEASE

2619 PRODUCT DR
ROCHESTER HILLS, MI 48309



FOR SUBLEASE

2619 PRODUCT DR
ROCHESTER HILLS, MI 48309



FOR SUBLEASE

2619 PRODUCT DR
ROCHESTER HILLS, MI 48309



FOR SUBLEASE

2619 PRODUCT DR
ROCHESTER HILLS, MI 48309



MIKE CARL
Senior Vice President
248.603.5277
Mike.Carl@plantemoran.com

SEAN ABELARDE
Consultant
248.223.3165
Sean.Abelarde@plantemoran.com

 **plante moran** | cresa

3000 TOWN CENTER, SUITE 100
SOUTHFIELD, MI 48075