

Arroyo Business Center

6352 Corte Del Abeto | Carlsbad, CA

Reduced Rate: \$6,000/mo. - Gross



Carlsbad Manufacturing Facility

APPROX. 4,250 SF UNIT AVAILABLE FOR SUBLEASE THROUGH MARCH 2025

Alec Spencer, Senior Associate

OFFICE 858.354.0577 | aspencer@intersectioncre.com

DRE Lic. #02140776

Dan McCarthy, Senior Director

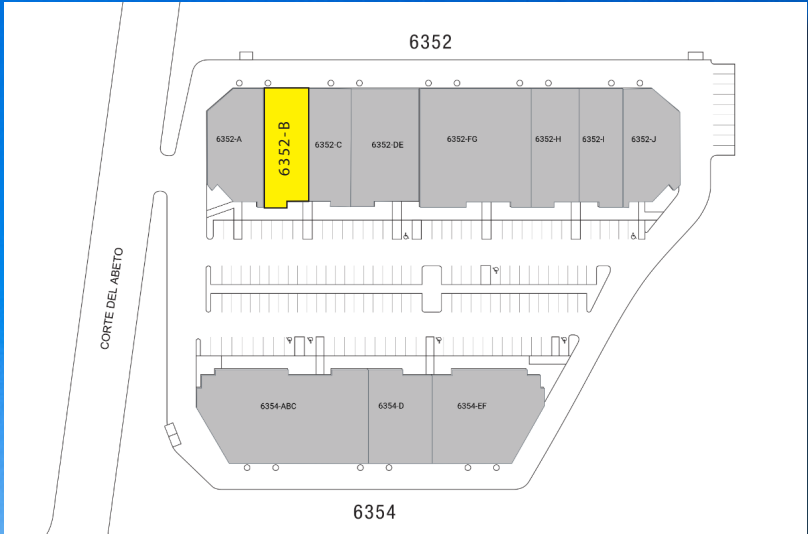
OFFICE 619.577.4557 | dmccarthy@intersectioncre.com

DRE Lic. #00928868

 **Intersection**

www.intersectioncre.com

Arroyo Business Center



Property Address

6352 Corte Del Abeto, Carlsbad, CA 92011

Property Type

Light Manufacturing
Multi-tenant

Building Size

40,893 SF

Zoning

PM

Parking

2.70/1,000 SF

Loading

One (1) 8' x 12' grade level

Clear Height

18'

Availability

Unit B - 4,250 SF

Available Now

Lease Rate

\$1.50/SF + NNN (\$0.37/SF)

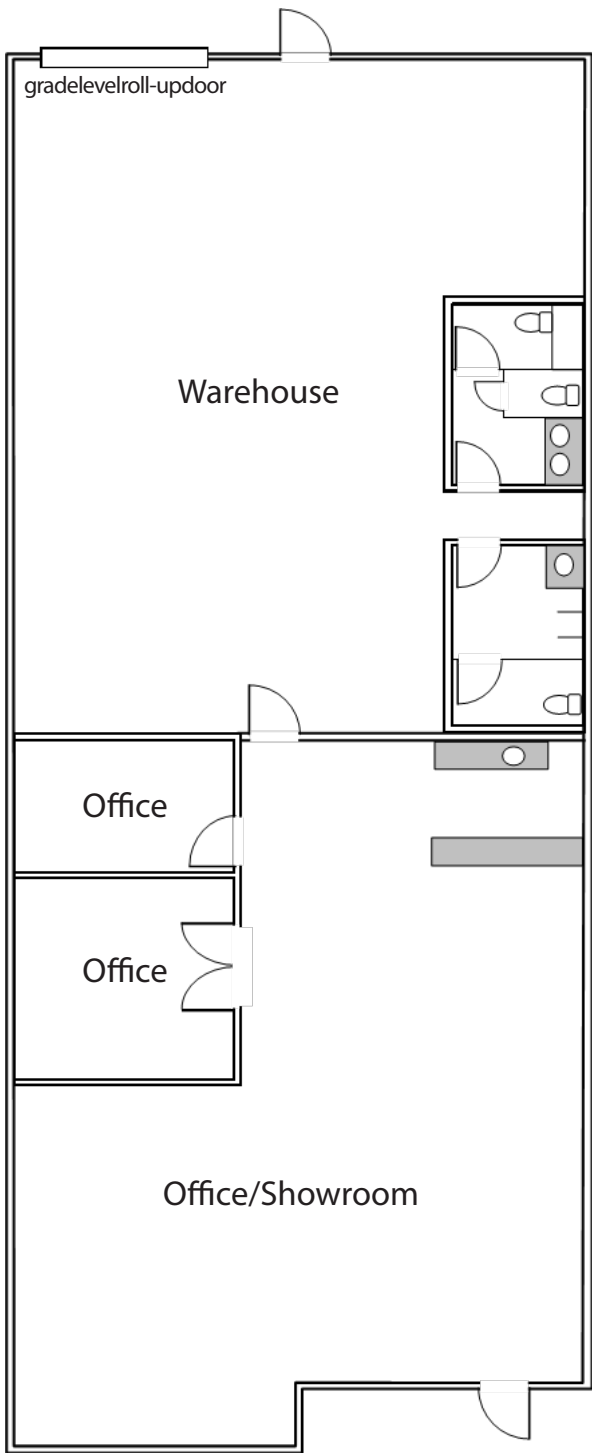
\$6,000/mo. - Gross (\$1.41/SF)

Term

Sublease through March 2025
(potential for additional term)



Unit B



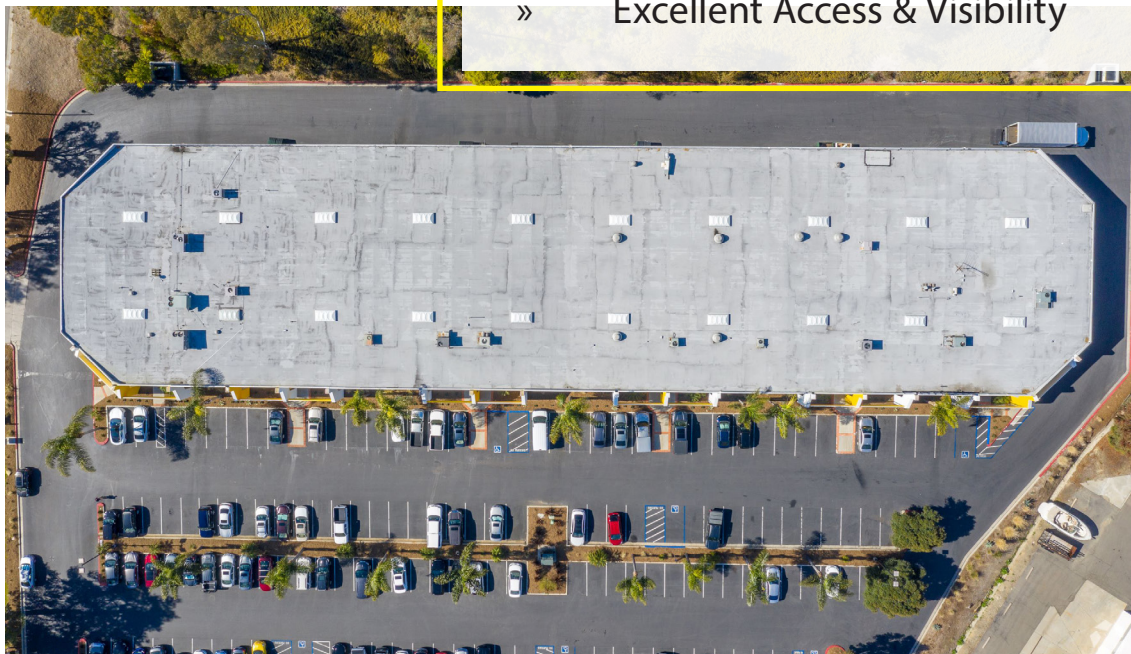
Features

- Approx 4,250 SF
- Two private offices
- Two restrooms
- 18' clear height
- 8' x 12' grade level door

Photos



- » High Tech Image
- » Nearby Retail Amenities
- » Excellent Access & Visibility



Intersection

Arroyo Business Center

6352 Corte Del Abeto | Carlsbad, CA



Alec Spencer, Senior Associate

OFFICE 858.354.0577 | aspencer@intersectioncre.com
DRE Lic. #02140776

Dan McCarthy, Senior Director

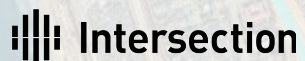
OFFICE 619.577.4557 | dmccarthy@intersectioncre.com
DRE Lic. #00928868

6352 Corte Del Abeto

Disclosure

The information set forth herein has been received by us from sources we believe to be reliable, but we have made no independent investigation of the accuracy or completeness of the information and make no representation with respect thereto. The above is submitted to errors, prior sale or lease, change in status or withdrawal without notice.

DRE Lic #02208857



©2023 Intersection.

PHONE
619.239.1788

ADDRESS
110 West A St, Suite 1125
San Diego, CA 92101

WEBSITE
www.intersectioncre.com