

Steward Plaza

1801 W Dallas Avenue,
Selma, AL 36701
www.cbre.com/birminghamal

Property Details

- + ±14,080 SF of inline shopping center space
 - ±1,645 SF Office or Retail Suite
 - ±12,435 SF Available
- + ±0.5-.75 acre pad in the parking lot for GL or BTS
- + Recent Improvements to the shopping center include brand new parking lot and updated digital signage
- + Brand New Aldi coming soon directly across the street

Call Broker for Pricing



Contact Us

Shannon Tyndall Rockwell
Vice President
+1 205 563 4583
shannon.tyndall@cbre.com

Jake Parker
Associate
+1 334 782 4996
jake.parker@cbre.com

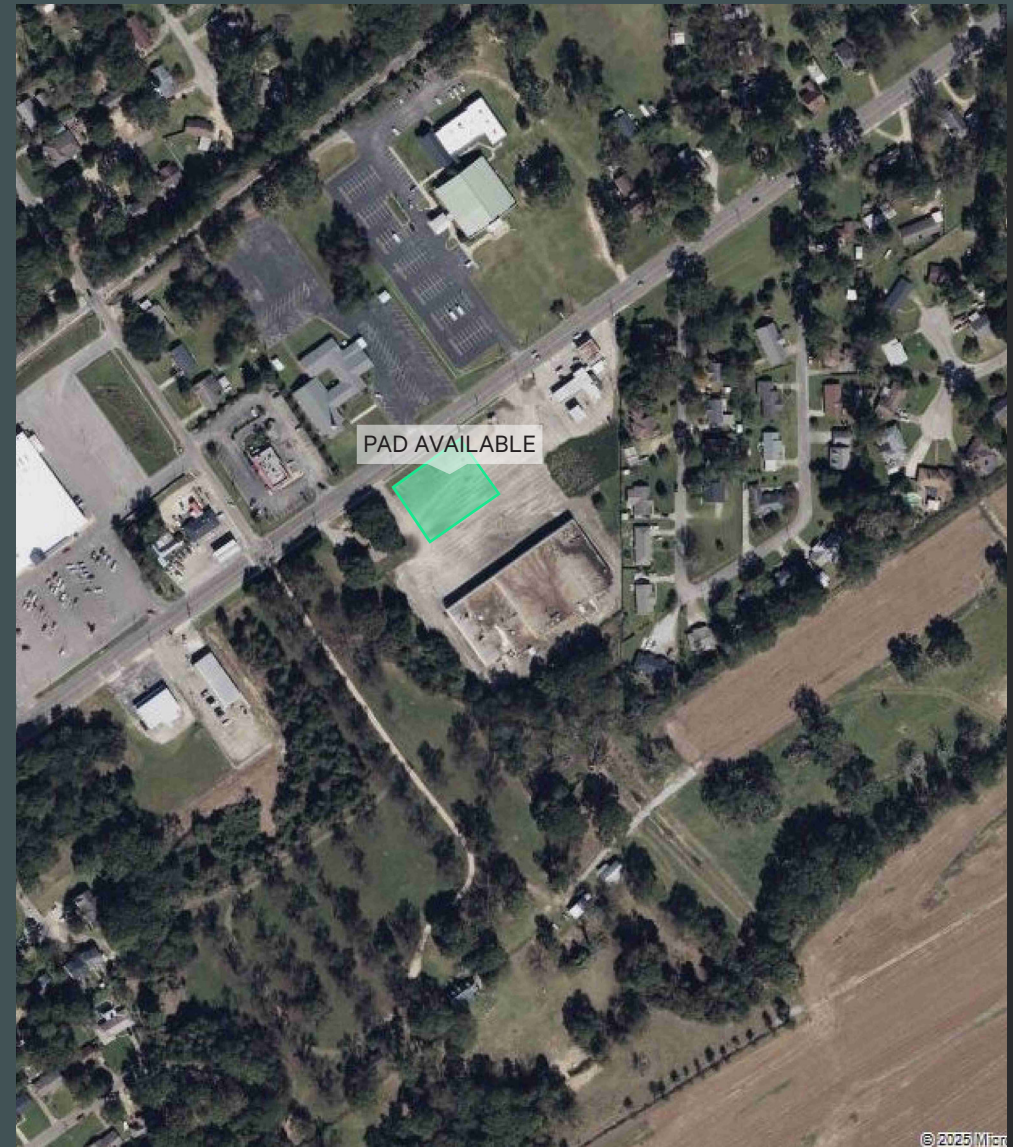
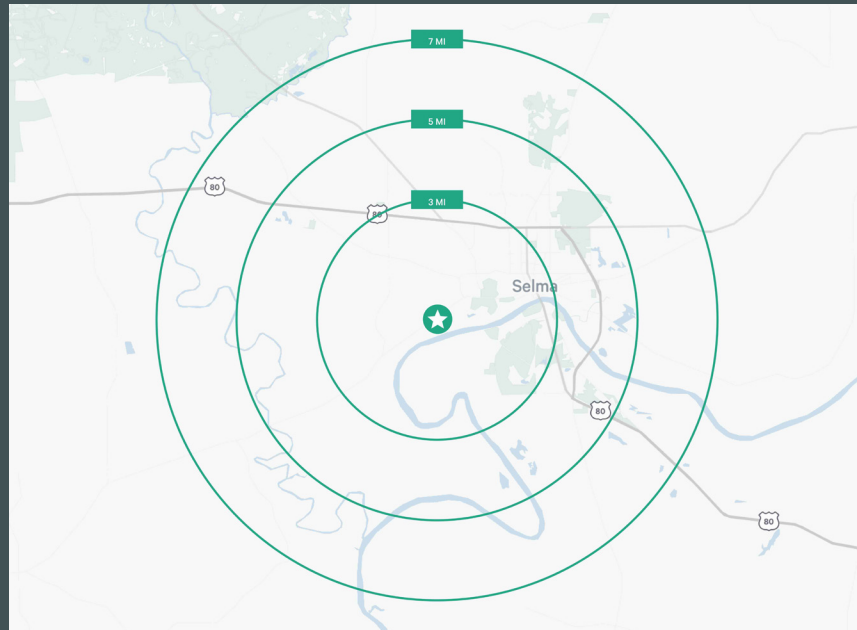
Steward Plaza

1801 W Dallas Ave | Selma, AL 36701

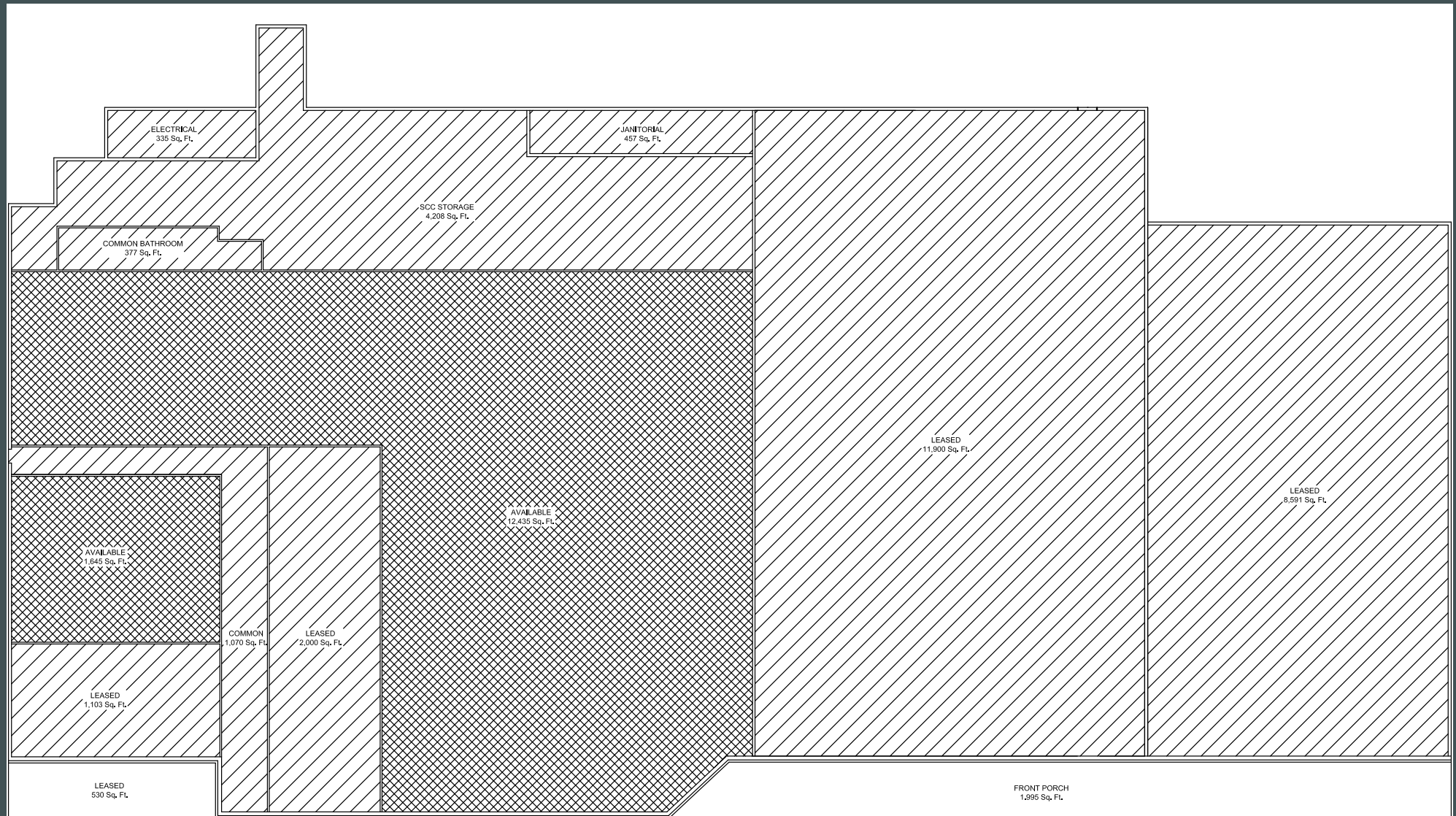
For Lease

Demographics

	3 Miles	5 Miles	7 Miles
Population	10,312	22,325	26,461
2029 Project Population	9,777	21,132	25,077
Daytime Population	11,700	24,315	27,571
Businesses	598	982	1,064
Average Household Income	\$62,208	\$52,000	\$53,092
Housing Units	5,214	11,310	13,296



Floor Plan



Steward Plaza

1801 W Dallas Ave | Selma, AL 36701

For Lease

Trade Area



© 2025 CBRE, Inc. All rights reserved. This information has been obtained from sources believed reliable, but has not been verified for accuracy or completeness. You should conduct a careful, independent investigation of the property and verify all information. Any reliance on this information is solely at your own risk. CBRE and the CBRE logo are service marks of CBRE, Inc. All other marks displayed on this document are the property of their respective owners, and the use of such logos does not imply any affiliation with or endorsement of CBRE. Photos herein are the property of their respective owners. Use of these images without the express written consent of the owner is prohibited.