

Office for Sublease EAST CAMPUS CORPORATE PARK I

32001 32nd Ave S, Federal Way, WA 98001



SUBLEASE - SUITE 420

AVAILABLE SF: 13,945 SF
Divisible to 5,000 SF
LEASE RATE: \$10.00 SF / Yr / NNN

COMMENTS

- Sublease thru May 31, 2025
- Furniture available
- Locker rooms with showers
- Free parking - 4/1,000 SF parking ratio
- On-site building conference facility
- Immediate access to I-5



CONTACT

Harrison Laird

hlaird@lee-associates.com
D 253.238.0044

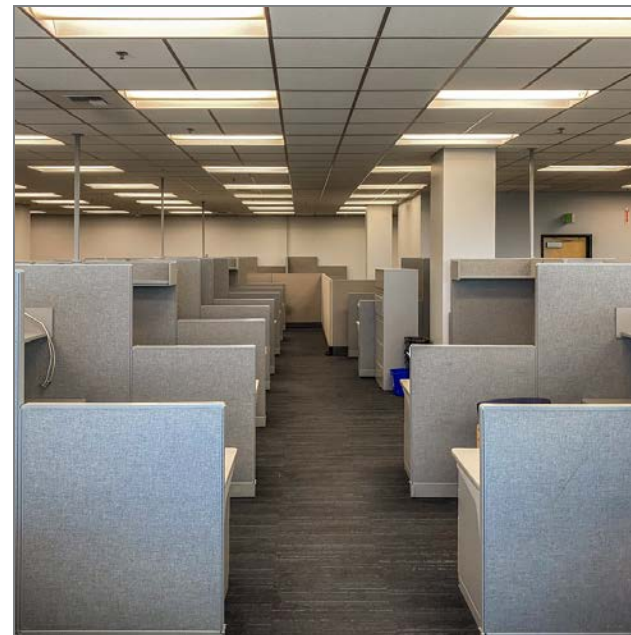
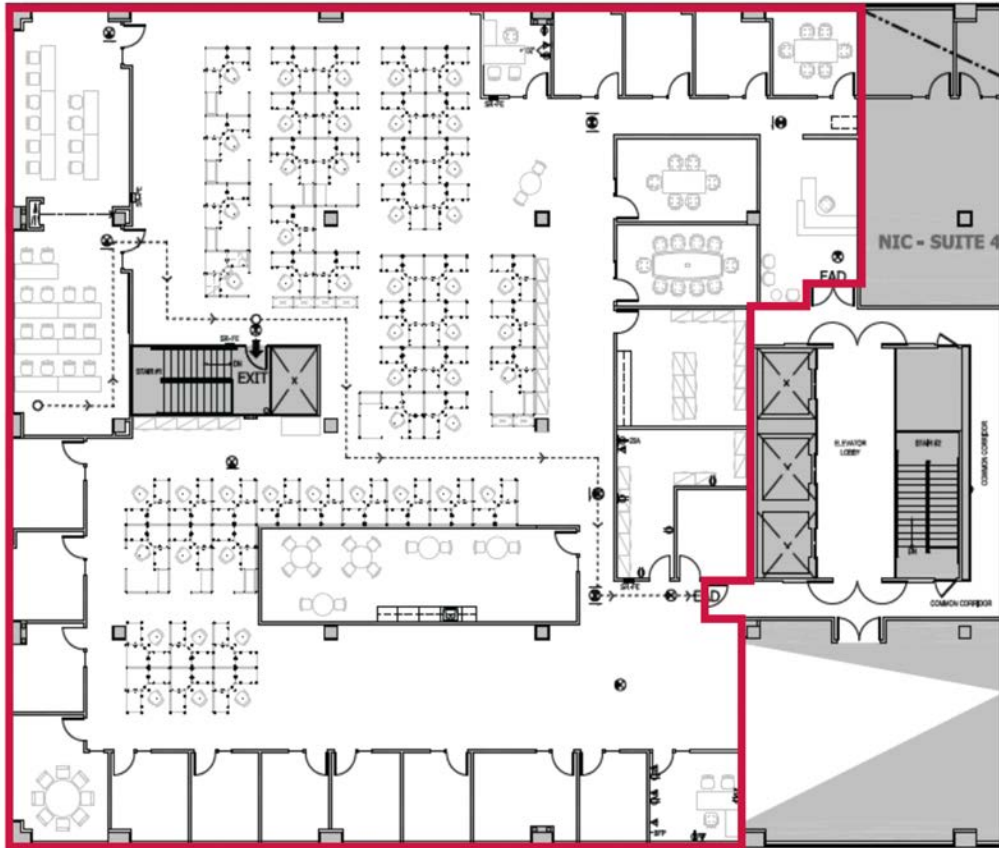
John Bauder, CCIM

jbauder@lee-associates.com
D 253.238.0043

We obtained the information above from sources we believe to be reliable. However, we have not verified its accuracy and make no guarantee, warranty or representation about it. It is submitted subject to the possibility of errors, omissions, change of price, rental or other conditions, prior sale, lease or financing, or withdrawal without notice. We include projections, opinions, assumptions or estimates for example only, and they may not represent current or future performance of the property. You and your tax and legal advisors should conduct your own investigation of the property and transaction.

Office for Sublease EAST CAMPUS CORPORATE PARK I

32001 32nd Ave S, Federal Way, WA 98001



CONTACT

Harrison Laird

hlaird@lee-associates.com

D 253.238.0044

John Bauder, CCIM

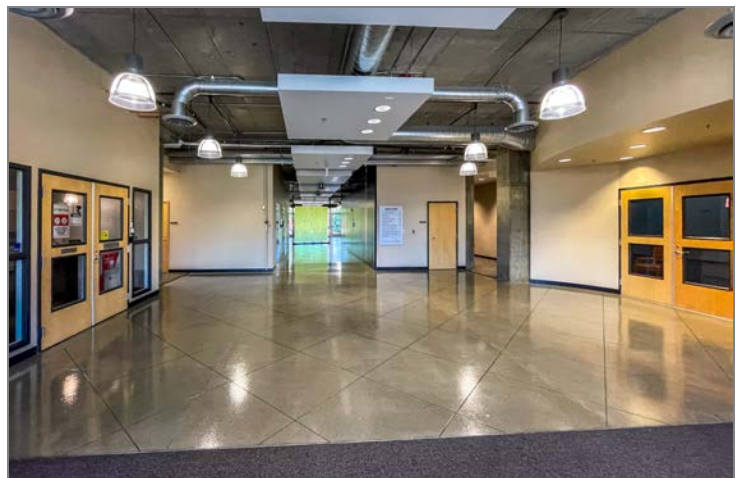
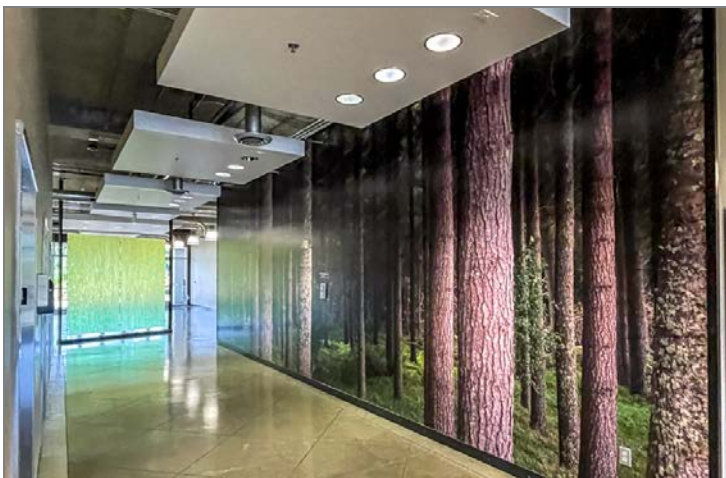
jbauder@lee-associates.com

D 253.238.0043

We obtained the information above from sources we believe to be reliable. However, we have not verified its accuracy and make no guarantee, warranty or representation about it. It is submitted subject to the possibility of errors, omissions, change of price, rental or other conditions, prior sale, lease or financing, or withdrawal without notice. We include projections, opinions, assumptions or estimates for example only, and they may not represent current or future performance of the property. You and your tax and legal advisors should conduct your own investigation of the property and transaction.

Office for Sublease EAST CAMPUS CORPORATE PARK I

32001 32nd Ave S, Federal Way, WA 98001



CONTACT

Harrison Laird
hlaird@lee-associates.com
D 253.238.0044

John Bauder, CCIM
jbauder@lee-associates.com
D 253.238.0043

We obtained the information above from sources we believe to be reliable. However, we have not verified its accuracy and make no guarantee, warranty or representation about it. It is submitted subject to the possibility of errors, omissions, change of price, rental or other conditions, prior sale, lease or financing, or withdrawal without notice. We include projections, opinions, assumptions or estimates for example only, and they may not represent current or future performance of the property. You and your tax and legal advisors should conduct your own investigation of the property and transaction.

Office for Sublease EAST CAMPUS CORPORATE PARK I

32001 32nd Ave S, Federal Way, WA 98001



Google

Imagery ©2023 , Airbus, Maxar Technologies, U.S. Geological Survey, USDA/FPAC/GEO

CONTACT

Harrison Laird

hlaird@lee-associates.com

D 253.238.0044

John Bauder, CCIM

jbauder@lee-associates.com

D 253.238.0043

We obtained the information above from sources we believe to be reliable. However, we have not verified its accuracy and make no guarantee, warranty or representation about it. It is submitted subject to the possibility of errors, omissions, change of price, rental or other conditions, prior sale, lease or financing, or withdrawal without notice. We include projections, opinions, assumptions or estimates for example only, and they may not represent current or future performance of the property. You and your tax and legal advisors should conduct your own investigation of the property and transaction.