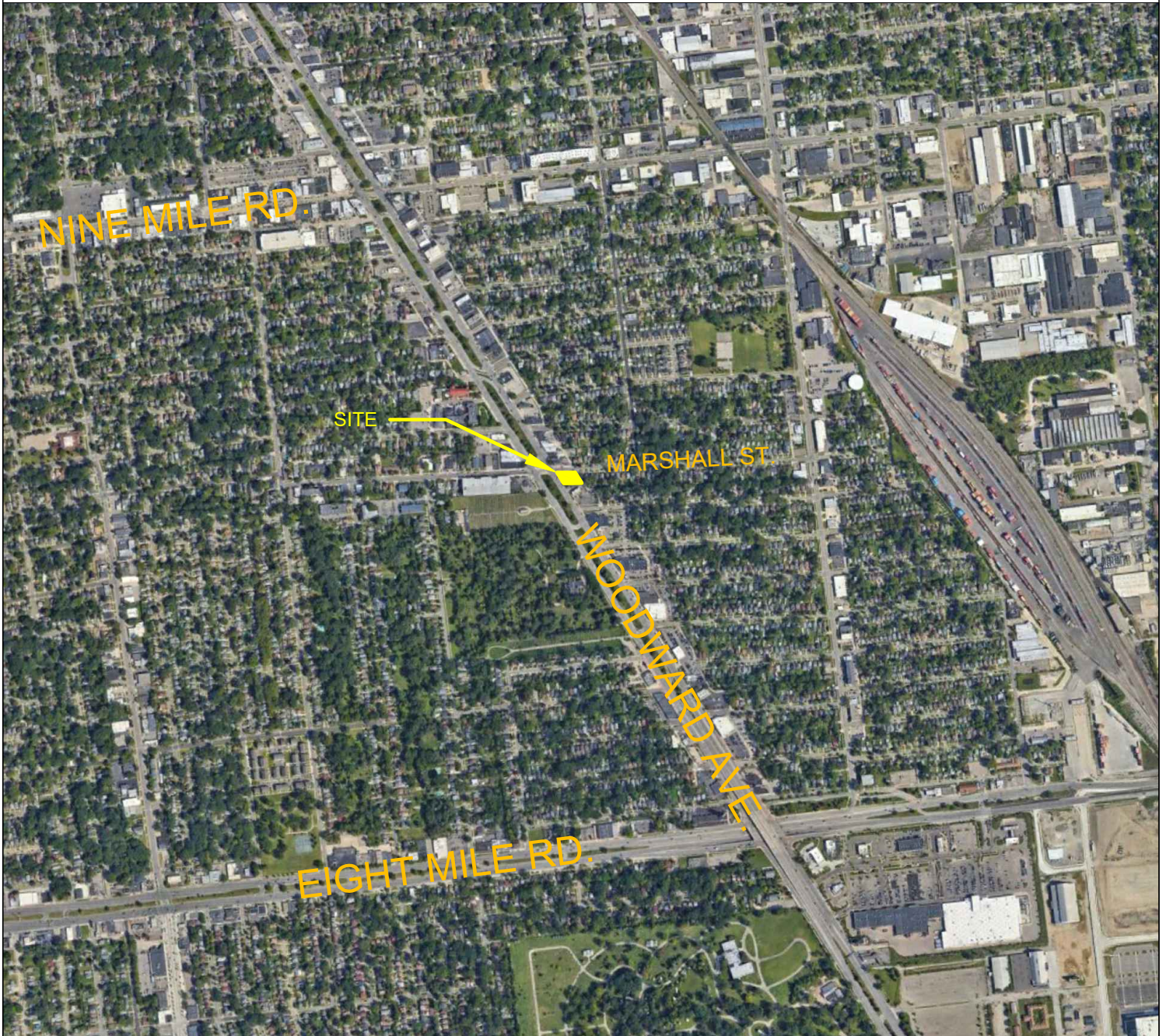


21950 Woodward Ave.

Ferndale, MI 48220

Property Dimensions: 89.48' (frontage on Woodward Ave.) x 125' (Marshall St.)
0.23 acres



Contact Information:

Dave Rea, Associate Broker
Michael Rea, Salesperson

Area Properties, Inc.
24001 Telegraph Rd.
Southfield, MI 48033

Tel: (248) 357-0998
Cell: (248) 225-1575
Email: michael@areaproperties.us

The information contained herein is from sources deemed reliable but not warranty or representation is made as to accuracy thereof.