

7900 N. HAGGERTY ROAD
CANTON, MICHIGAN

INDUSTRIAL FOR LEASE
70,010-140,000 Square Feet Available



**SIGNATURE
ASSOCIATES**
KNOW SIGNATURE | KNOW RESULTS



PROPERTY FEATURES

- 70,010 – 140,000 square feet available
- 1,500 square feet office
- 12' – 31' clear height
- (36) truckwells
- (1) 14' x 16' grade level door
- Zoned L-1
- Fenced yard
- Flexible lease term
- Room for 100,000 square foot building expansion
- Lease Rate: \$6.95/sq. ft. NNN



For more information, please contact:

STEVE GORDON
(248) 948 0101
sgordon@signatureassociates.com

GREG HUDAS
(248) 799 3162
ghudas@signatureassociates.com

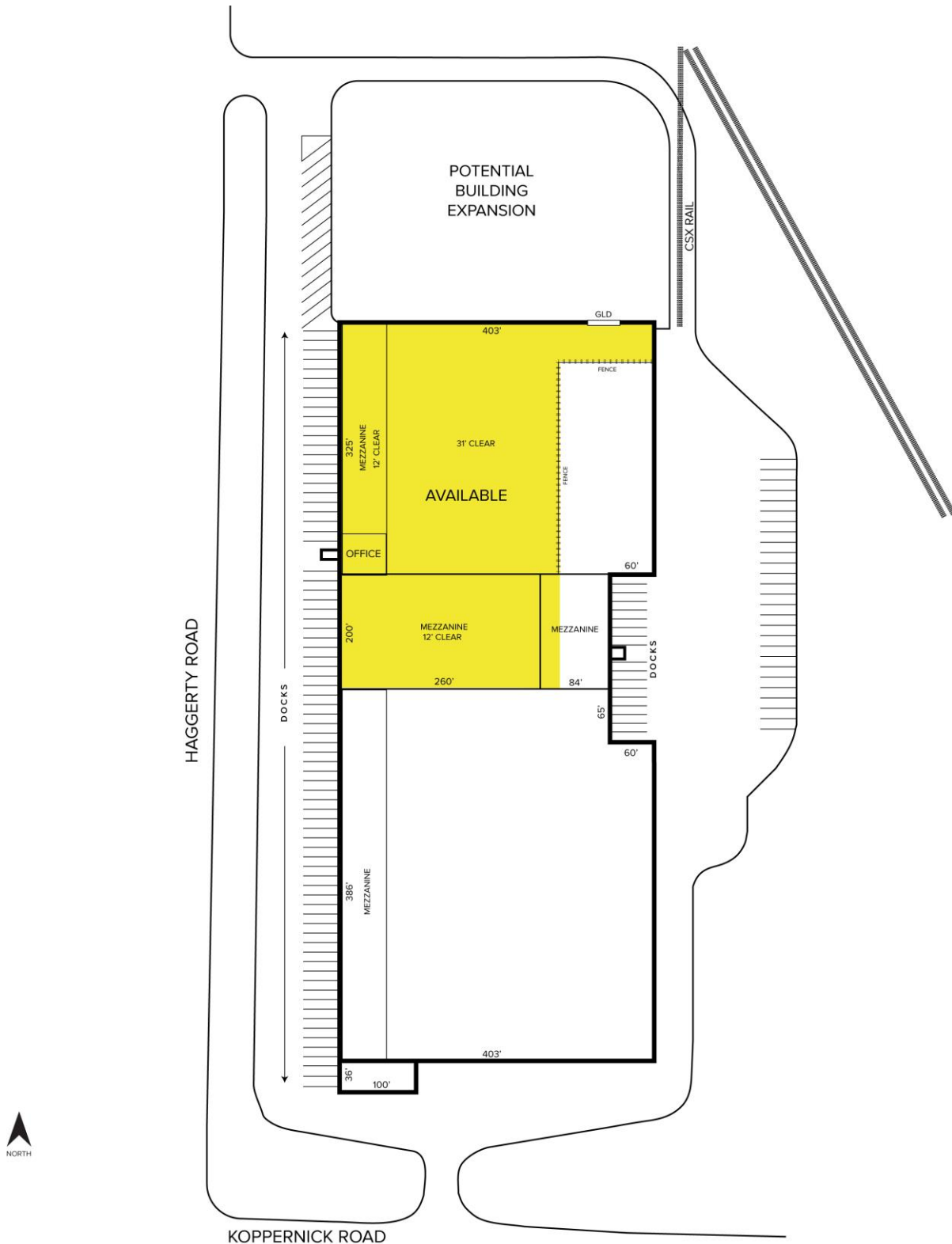
SIGNATURE ASSOCIATES
One Towne Square, Suite 1200
Southfield, MI 48076
www.signatureassociates.com

7900 N. Haggerty Road – Canton, Michigan

Industrial For Lease

70,010-140,000
Square Feet
AVAILABLE

Site Plan



For more information, please contact:

STEVE GORDON

(248) 948 0101

sgordon@signatureassociates.com

GREG HUDAS

(248) 799 3162

ghudas@signatureassociates.com

SIGNATURE ASSOCIATES

One Towne Square, Suite 1200

Southfield, MI 48076

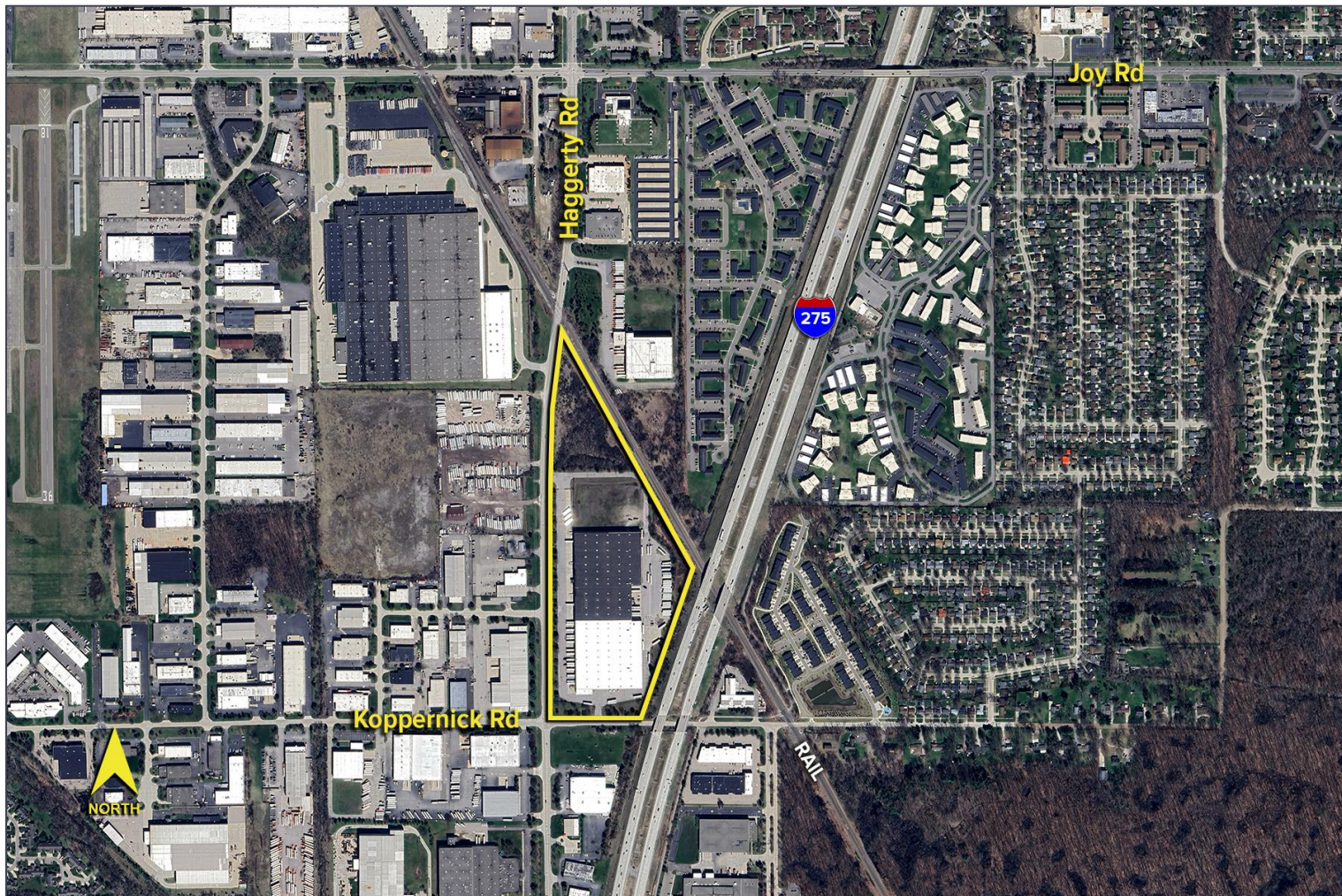
www.signatureassociates.com

7900 N. Haggerty Road – Canton, Michigan

Industrial For Lease

70,010-140,000
Square Feet
AVAILABLE

Aerial



For more information, please contact:

STEVE GORDON
(248) 948 0101
sgordon@signatureassociates.com

GREG HUDAS
(248) 799 3162
ghudas@signatureassociates.com

SIGNATURE ASSOCIATES
One Towne Square, Suite 1200
Southfield, MI 48076
www.signatureassociates.com