

ORCHARD PINE OFFICE CENTER

LEASING INFORMATION PACKAGE

7035 Orchard Lake Road
West Bloomfield, Michigan 48322

1,000 – 1,200 SQ. FT.



FOR LEASING INQUIRIES, CONTACT ROB KROCHMAL:
248.867.3304 • ROBK@SURNOW.COM

TABLE OF CONTENTS

Aerial	3
Site Plan	4
Pictures	5-6
Floor Plan – Suite 100	7
Floor Plan – Suite 450	8
Floor Plan – Suite 600	9
Property and Suite Highlights	10
About The Surnow Company	11

AERIAL



MAPLE ROAD

ORCHARD LAKE ROAD

LOCATION

14 MILE ROAD

14 MILE ROAD

NORTHWESTERN HWY / M-10



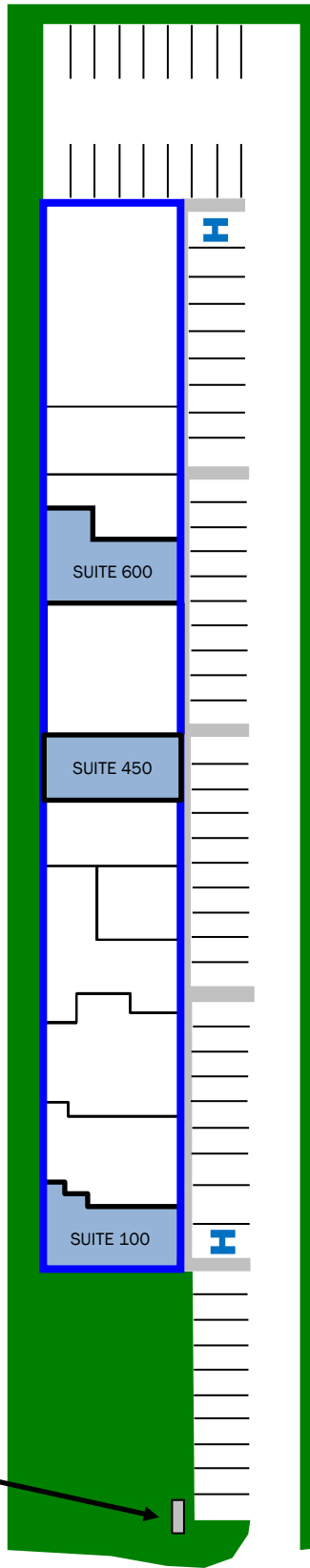
FOR LEASING INQUIRIES, CONTACT ROB KROCHMAL:
248.867.3304 · ROBK@SURNOW.COM

SITE PLAN

SUITE 600: 1,200 SF

SUITE 450: 1,000 SF

SUITE 100: 1,200 SF



MONUMENT SIGN



ORCHARD LAKE ROAD



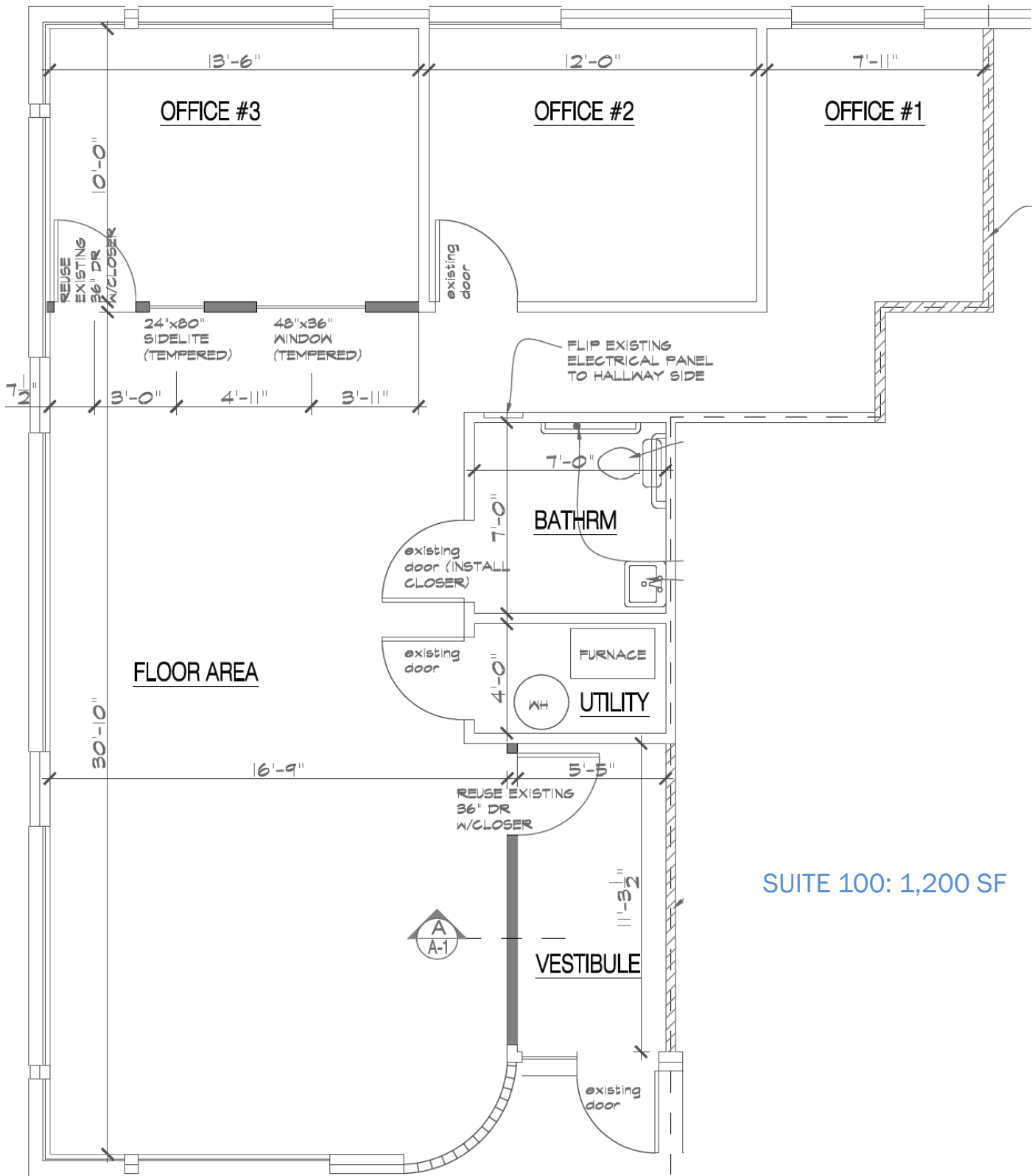
PICTURES



PICTURES – MONUMENT SIGN



SUITE PLAN - SUITE 100

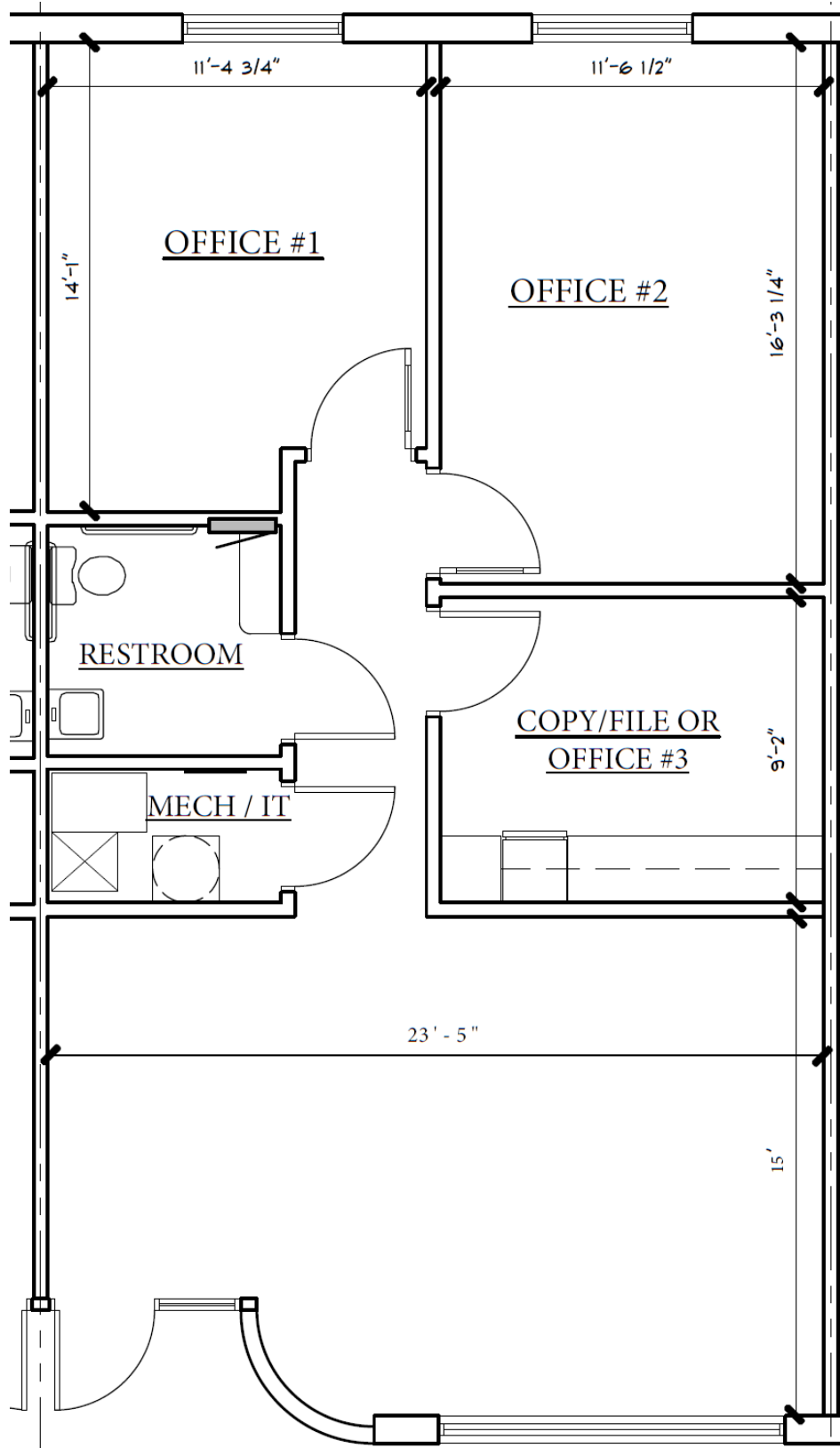


SUITE 100: 1,200 SF



FOR LEASING INQUIRIES, CONTACT ROB KROCHMAL:
248.867.3304 · ROBK@SURNOW.COM

SUITE PLAN - SUITE 450

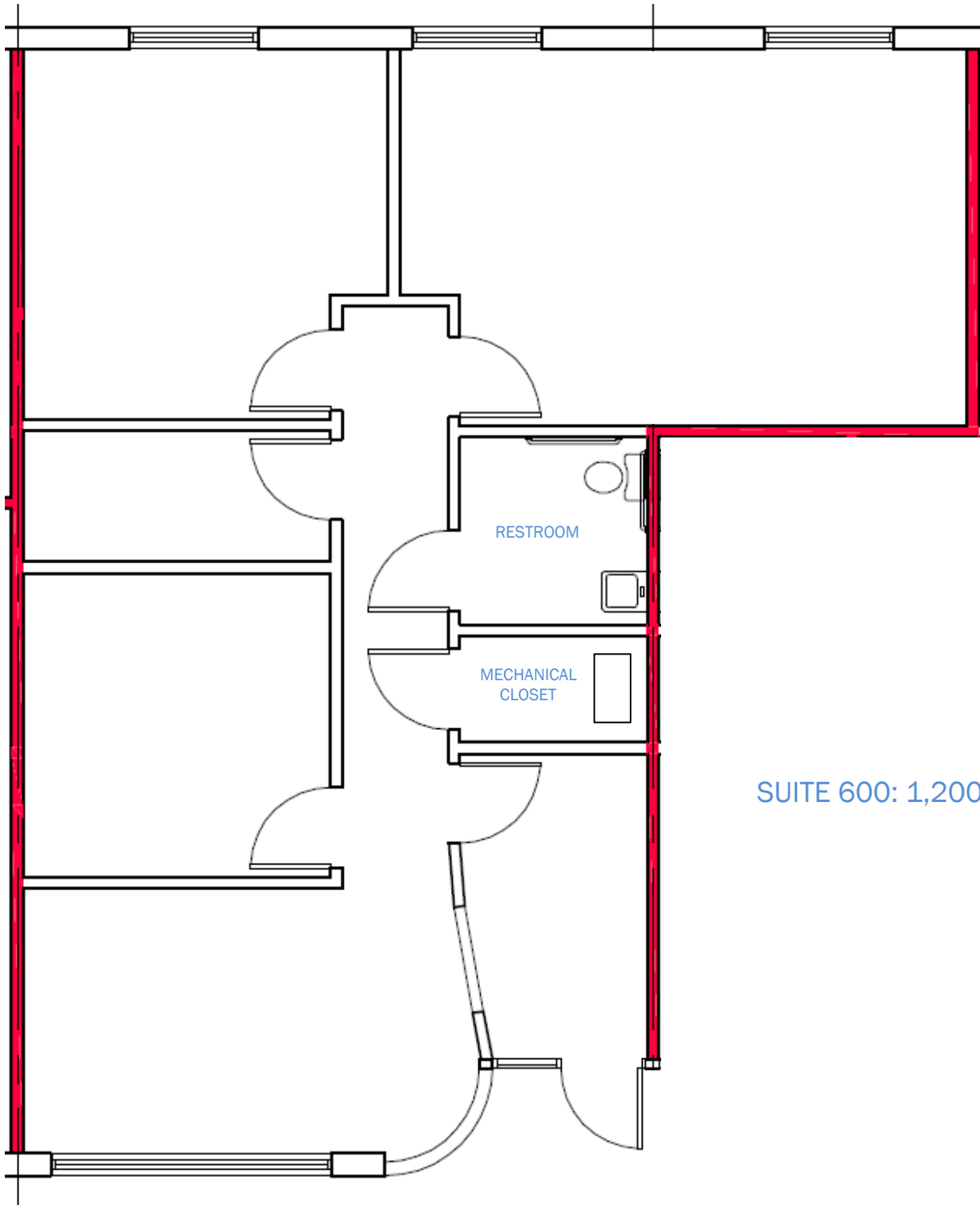


SUITE 450
1,000 SF



FOR LEASING INQUIRIES, CONTACT ROB KROCHMAL:
248.867.3304 · ROBK@SURNOW.COM

SUITE PLAN - SUITES 600



SUITE 600: 1,200 SF



PROPERTY AND SUITE HIGHLIGHTS

- Private suite entrance with 24/7 access
- Private in suite ADA compliant restroom(s)
- Suite signage to showcase your brand
- Convenient parking for executives, employees, and visitors
- Individualized heating and cooling with 24/7 control
- Operable north facing windows, and oversized southern windows
- First class landscaping with spring/summer/fall flower plantings
- Monument signage available for larger occupants
- Property owned and proactively managed by us, The Surnow Company, with full time facilities and property managers ensuring a wonderful tenancy experience
- Convenient to restaurants, banks, shops, grocery stores, post office, and fitness facilities





ABOUT US, THE OWNER, MANAGER & HOST

The Surnow Company is a family-owned developer,
owner and property manager headquartered in
Birmingham, Michigan.

Known for attention to detail and white-glove approach,
we provide quality space and services for our customers
and communities to thrive.