



Rare industrial space for lease

430 Industrial Drive, Unit 2
Milton, ON

Brooke Boquist
Sales Representative, Associate
647 613 5334
brooke.boquist@avisonyoung.com

Ben Sykes, SIOR
Sales Representative, Principal
905 283 2324
ben.sykes@avisonyou

**AVISON
YOUNG**



430

Industrial Drive
Unit 2
Milton, ON

Property details

TOTAL AREA

Warehouse	85%
Office	15% (to be confirmed)
Total	12,100 sf

CLEAR HEIGHT

22'

SHIPPING

1 Truck Level and 1 Drive-in Door

ZONING

M2 - Industrial

YEAR CONSTRUCTED

2002

ASKING RENT

\$17.75 psf net

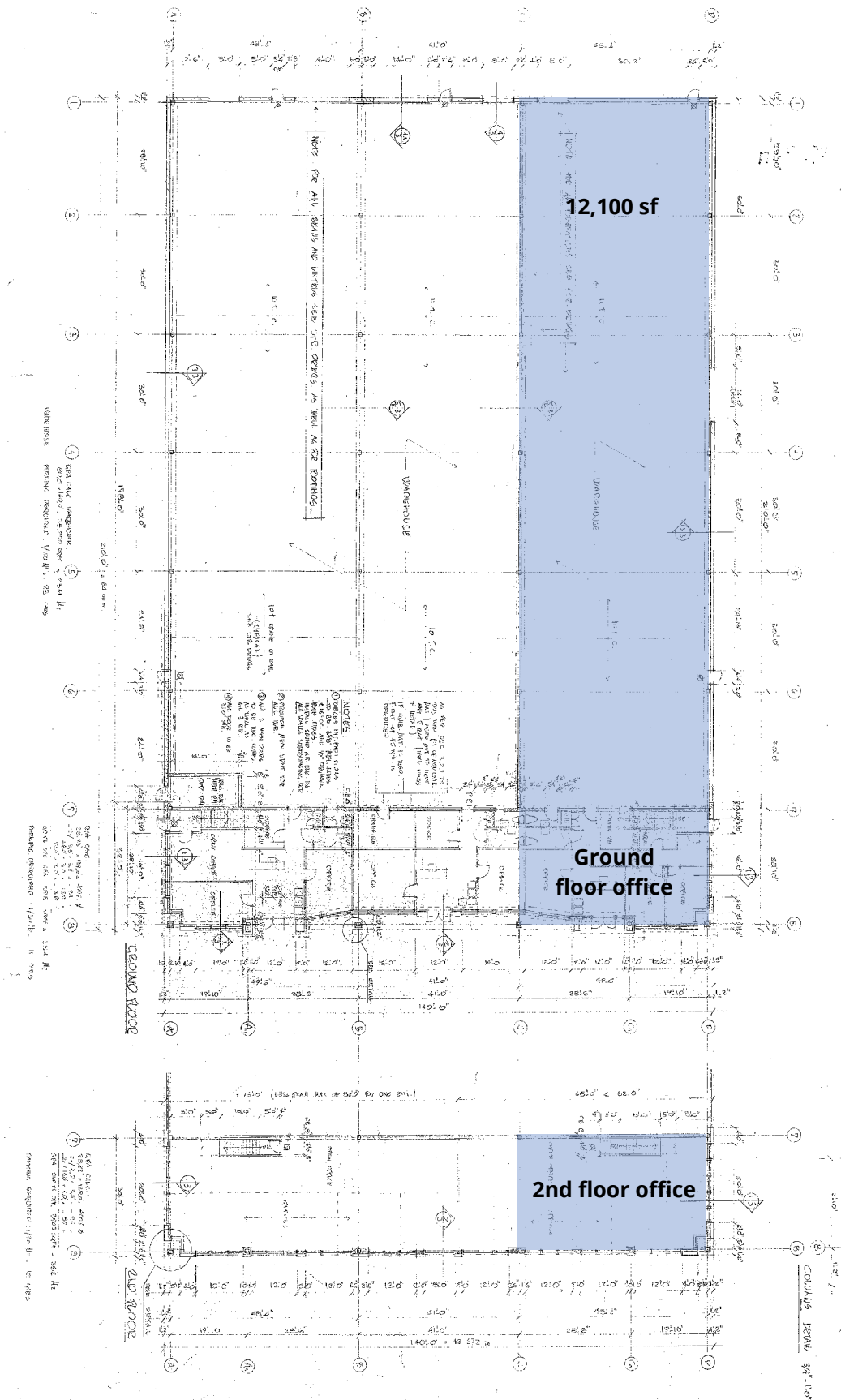
TMI

\$4.63 psf (2025)

Features

- Modern precast industrial facility constructed in 2002
- Less than 2 km from Highway 401 interchange @Martin Street
- 12,100 sf available for lease including ample power and radiant heat in warehouse
- Zoned M2, permitting Outside Storage
- Office area to be confirmed

**AVISON
YOUNG**



430 Industrial Drive, Unit 2
Milton, ON

AERIAL VIEW



430 Industrial Drive, Unit 2
Milton, ON

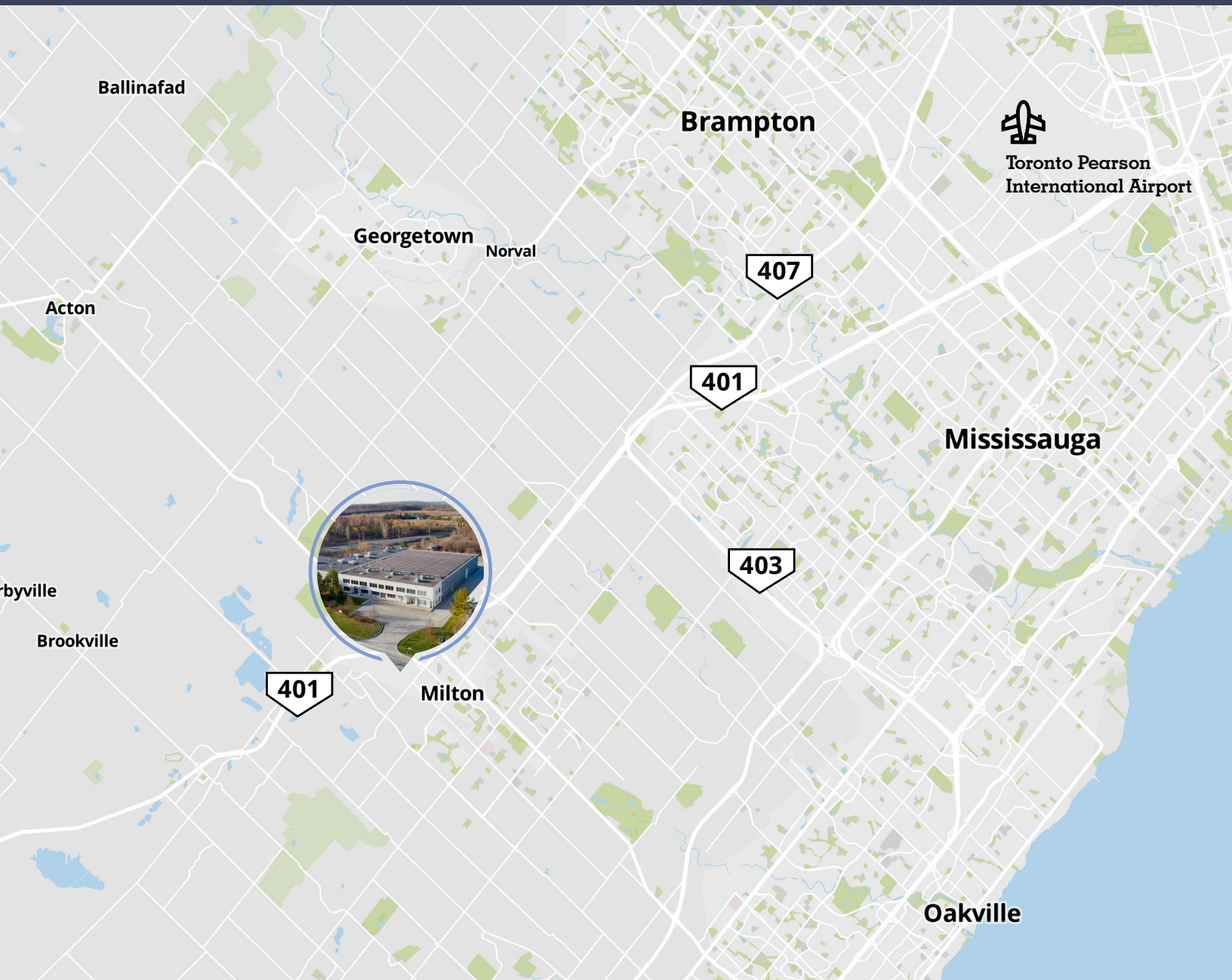
PROPERTY PHOTOS



430 Industrial Drive, Unit 2

Milton, ON

LOCATION MAP



Distances from 430 Industrial Drive

3 min	6 min	10 min	25 min	38 min
1.9 km to Highway 401	4.2 km to Milton GO Station	11 km to Proposed Future CN Terminal	32 km to Toronto Pearson International Airport	57 km to Downtown Toronto

**AVISON
YOUNG**

For Lease
430 Industrial Drive, Unit 2
Milton, ON



Get more information

Brooke Boquist

Sales Representative, Associate
647 613 5334
brooke.boquist@avisonyoung.com

Ben Sykes, SIOR

Sales Representative, Principal
905 283 2324
ben.sykes@avisonyoung.com

Avison Young Commercial Real Estate Services, LP, Brokerage

77 City Centre Drive, Suite 301, Mississauga, Ontario L5B 1M5
Office 905 712 2100 Fax 905 712 2937 avisonyoung.ca

© 2022. Avison Young. Information contained herein was obtained from sources deemed reliable and, while thought to be correct, have not been verified. Avison Young does not guarantee the accuracy or completeness of the information presented, nor assumes any responsibility or liability for any errors or omissions therein.
© Mapbox, © OpenStreetMap



Platinum member