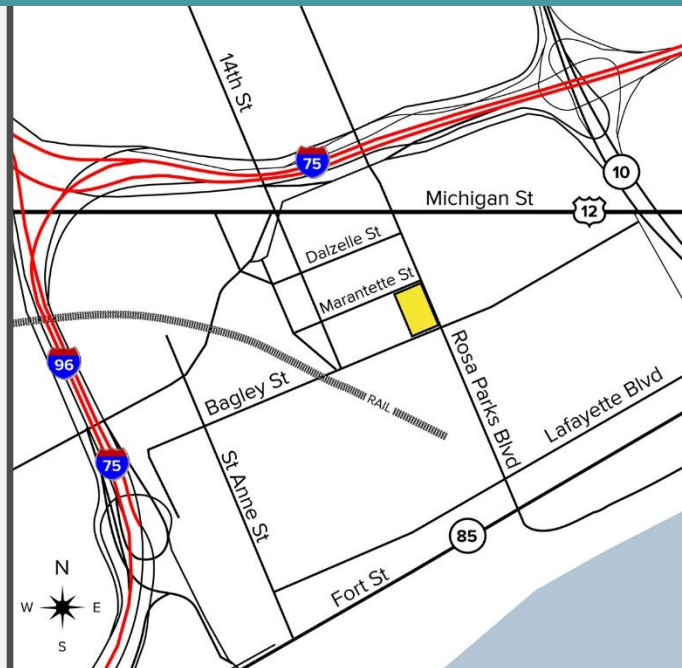


# FOR LEASE



## 1927 ROSA PARKS BLVD | DETROIT, MI

- 1<sup>st</sup> floor suites remaining:
  - 6,393 square feet office/warehouse
  - 2,487 square feet warehouse
  - 805 square feet warehouse
  - 2,676 square feet office
- 2<sup>nd</sup> floor suites remaining:
  - 1,501 square feet office
  - 123,000 square feet warehouse space available at \$2.50/sq. ft.
- Located in the Opportunity Zone
- Majority of roof replaced in 2016
- Dock-high & grade level loading available
- Zoned B6, General Business
- Industrial Lease Rate: \$6.75/sq. ft. G+U
- Office Lease Rate: \$10.00/sq. ft. G + U



For more information, please contact:

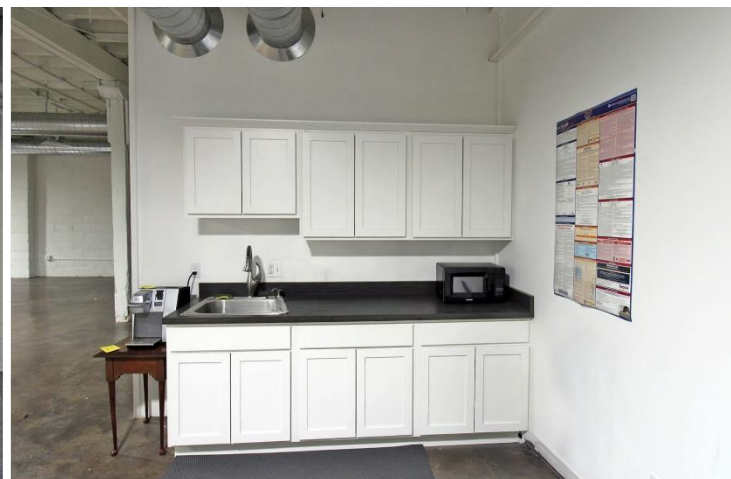
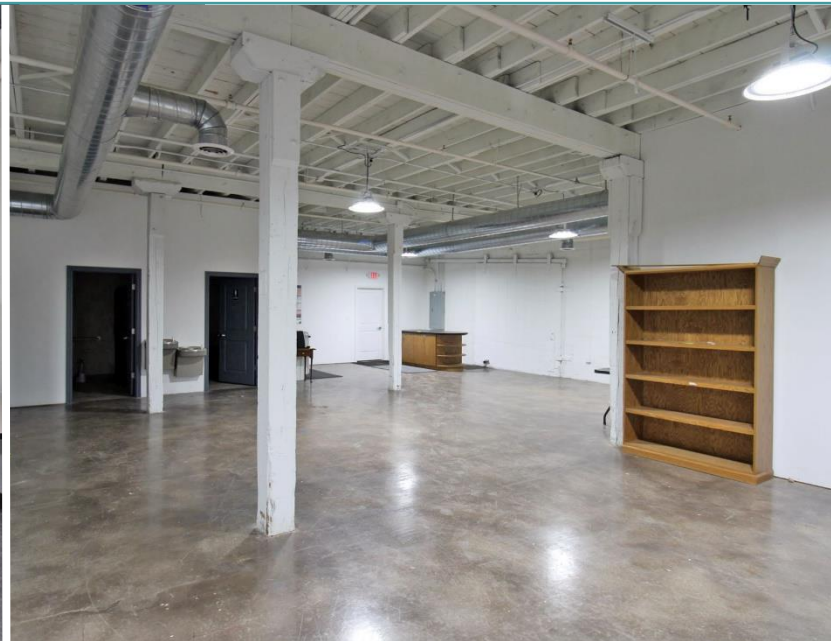
**CHRIS MONSOUR** (248) 948 0107 cmonsour@signatureassociates.com  
**SCOTT ELLIOTT** (248) 948 4182 selliot@signatureassociates.com  
**STEVE GORDON** (248) 948 0101 sgordon@signatureassociates.com

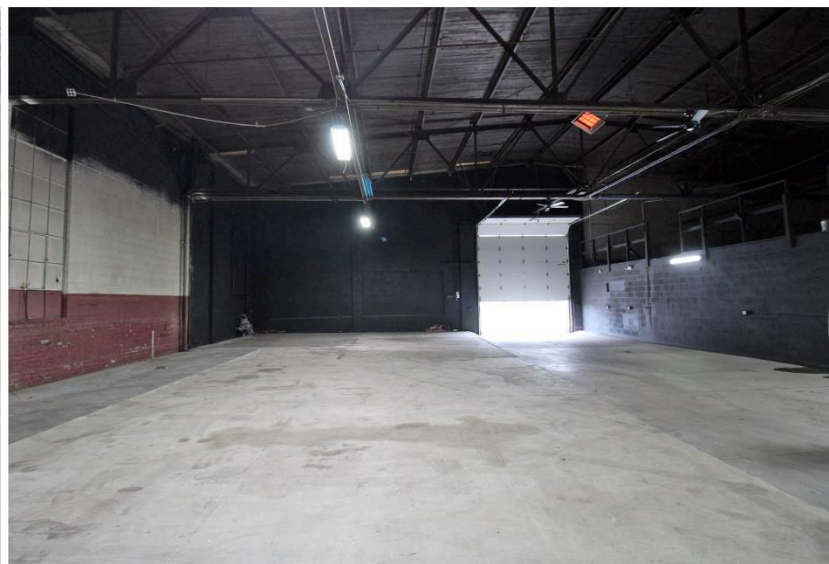
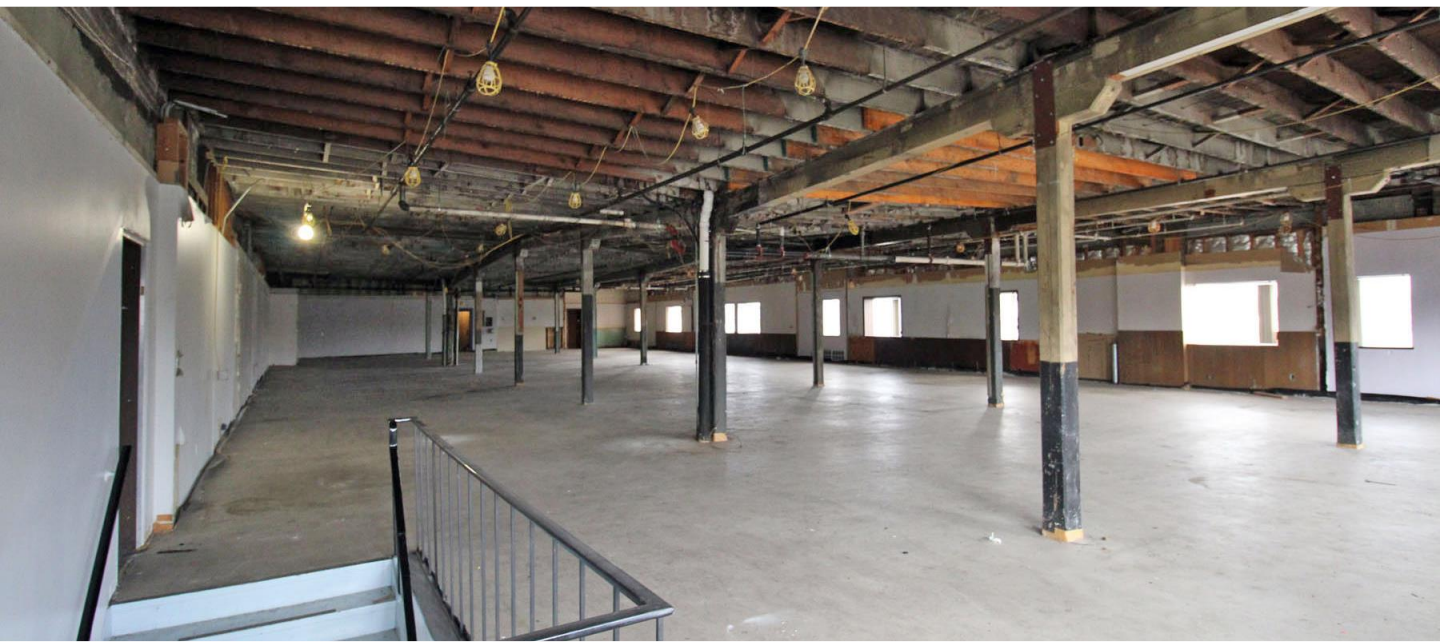
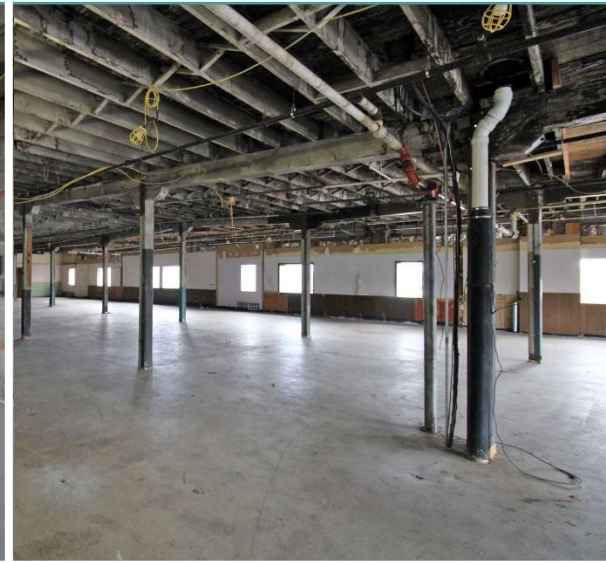
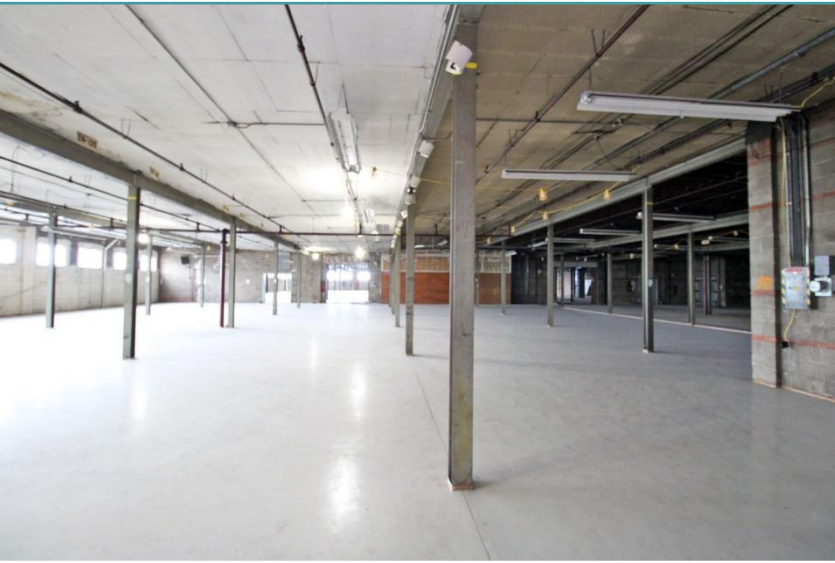


**SIGNATURE ASSOCIATES**  
KNOW SIGNATURE | KNOW RESULTS

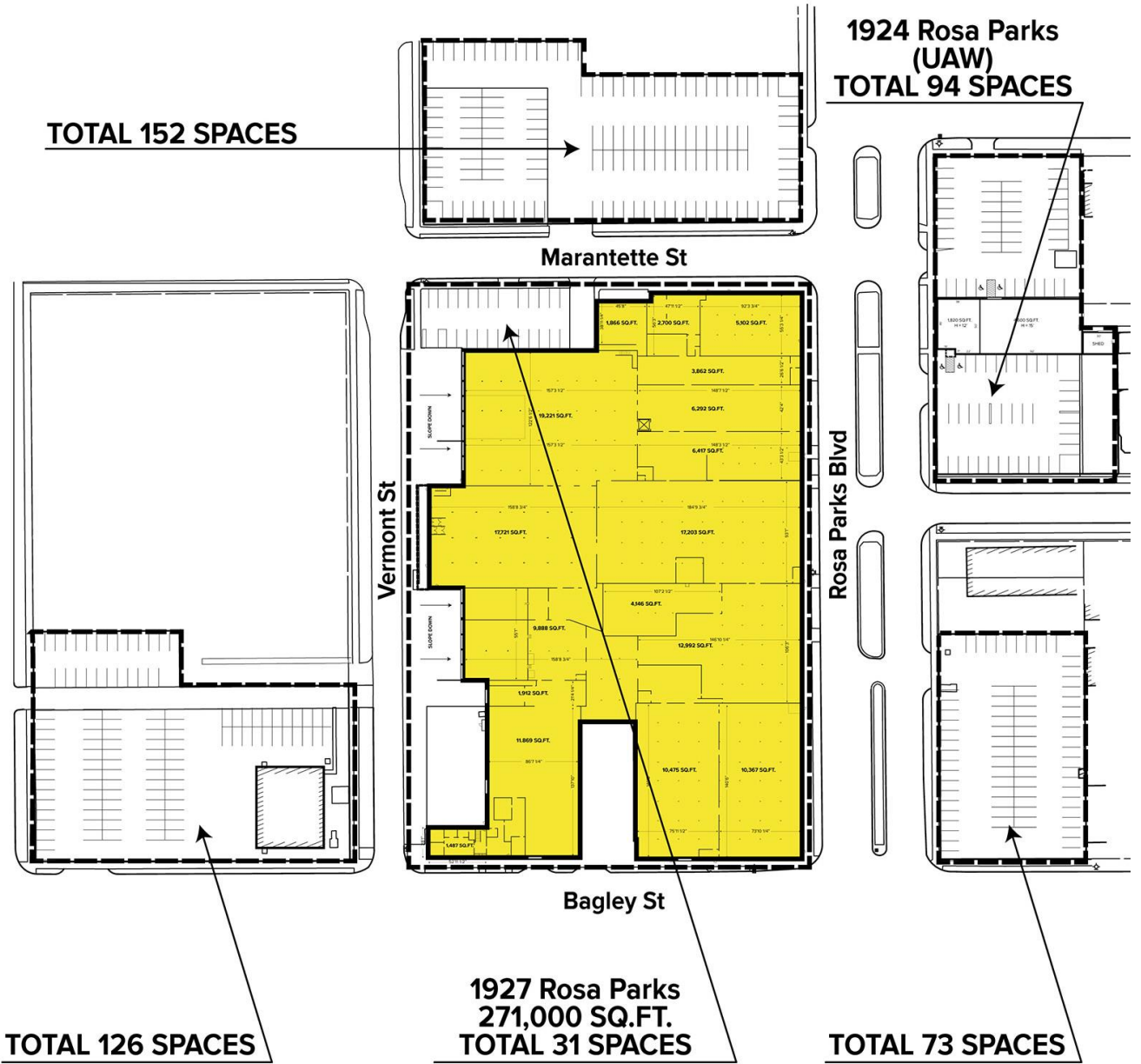
Located in the heart of **Corktown**, within walking distance to the newly renovated Michigan Central Station and many new restaurants, shops and bars.



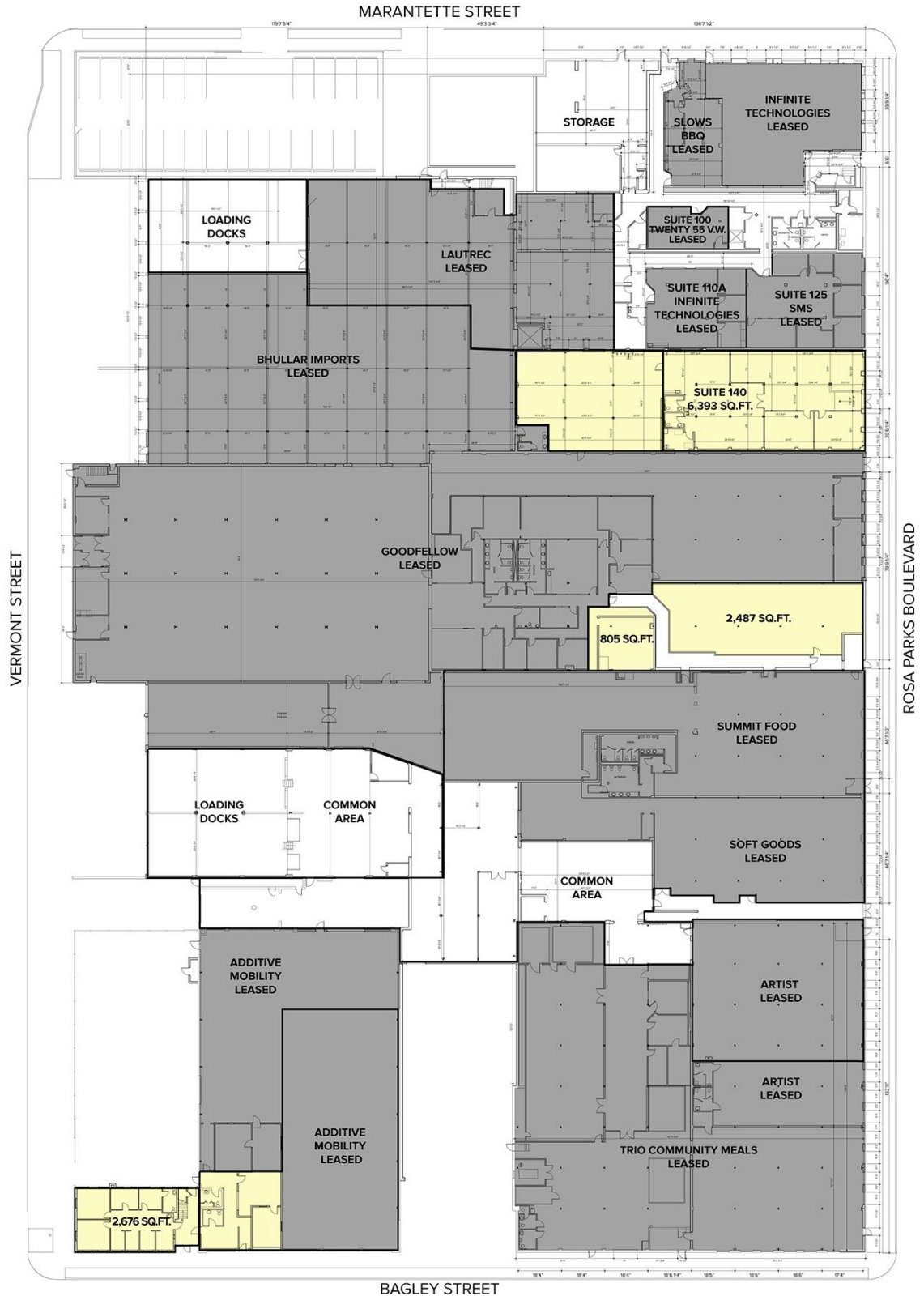




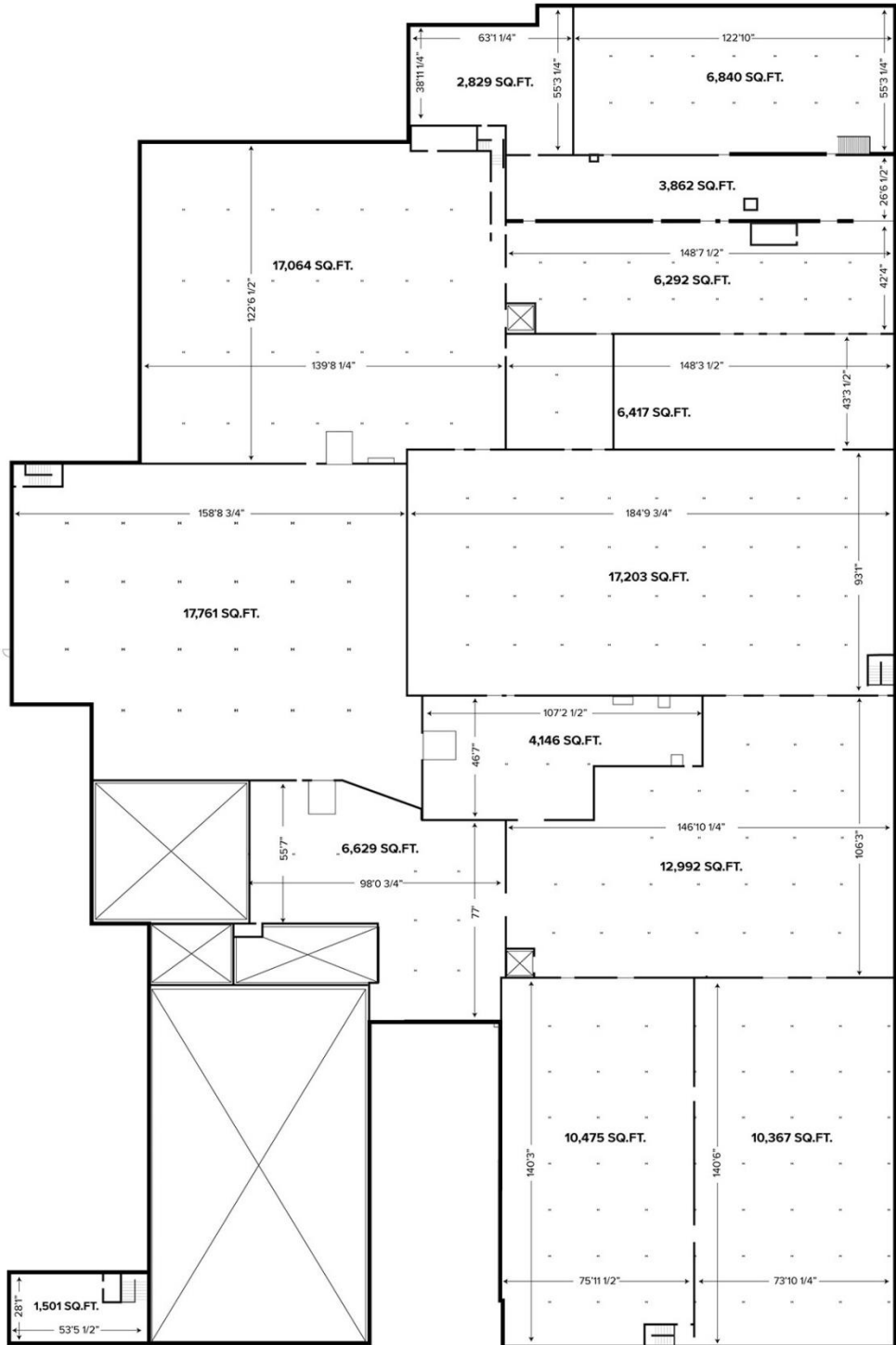
SITE PLAN



FIRST FLOOR



**SECOND FLOOR -  
Up to 123,000 Sq. Ft.**





For more information, please contact:

CHRIS MONSOUR (248) 948 0107 cmonsour@signatureassociates.com  
 SCOTT ELLIOTT (248) 948 4182 selliott@signatureassociates.com  
 STEVE GORDON (248) 948 0101 sgordon@signatureassociates.com



**SIGNATURE ASSOCIATES**  
 KNOW SIGNATURE | KNOW RESULTS