

# Vistech Building

1435 Win Hentschel Blvd, West Lafayette, IN 47906

Located at the entry of the Purdue Research Park

**TRUVANT**  
REALTY

Call Randy Truitt  
765-404-7584

randy@truvantrealty.com



## DELUXE OFFICE / RESEARCH SPACE

**NEW AVAILABILITY!** PRIME LOCATION  
at the entry of the **Purdue Research Park**

## SPACES AVAILABLE

### Basement Floor - \$12/NNN

- Suite B18: 1,241 Gross Square Feet
- Suite B100: 5,050 Gross Square Feet
- Suite B105: 4,714 Gross Square Feet
- Suite B108: 1,585 Gross Square Feet
- Suite B110: 1,755 Gross Square Feet

### Main Floor - \$16.50/NNN

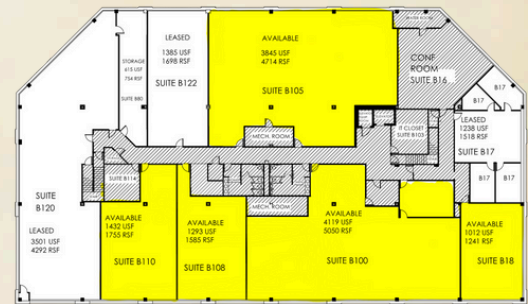
- Suite 108: 1,508 Gross Square Feet
- Suite 115: 2,355 Gross Square Feet

### Second Floor - \$16.50/NNN

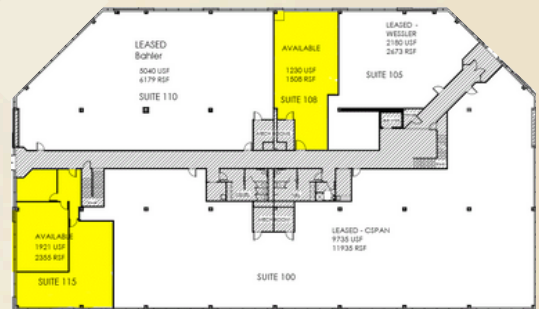
- Suite 200: 2,222 Gross Square Feet
- Suite 207: 3,170 Gross Square Feet
- Suite 215: 7,062 Gross Square Feet

## BUILDING AMENITIES INCLUDE

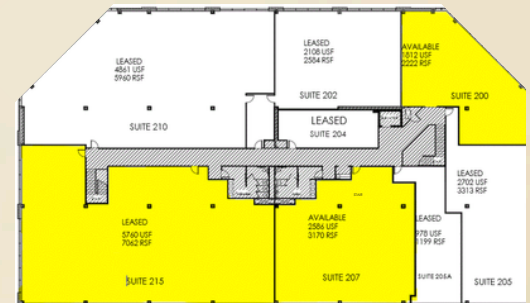
- Secure Entry Access System
- Newly Renovated Common Areas
- Elevator
- Kitchenettes on Each Floor
- Locker Room
- Sprinkler System
- Shared Building Conference Rooms
- Easy Access to West Lafayette Park Trail System
- Video Conference Center in Partnership with PRF
- Fiber Optics Available in Building



BASEMENT



MAIN FLOOR



SECOND FLOOR

VISIT VISTECH VIRTUALLY at <https://rentvistech.com/>