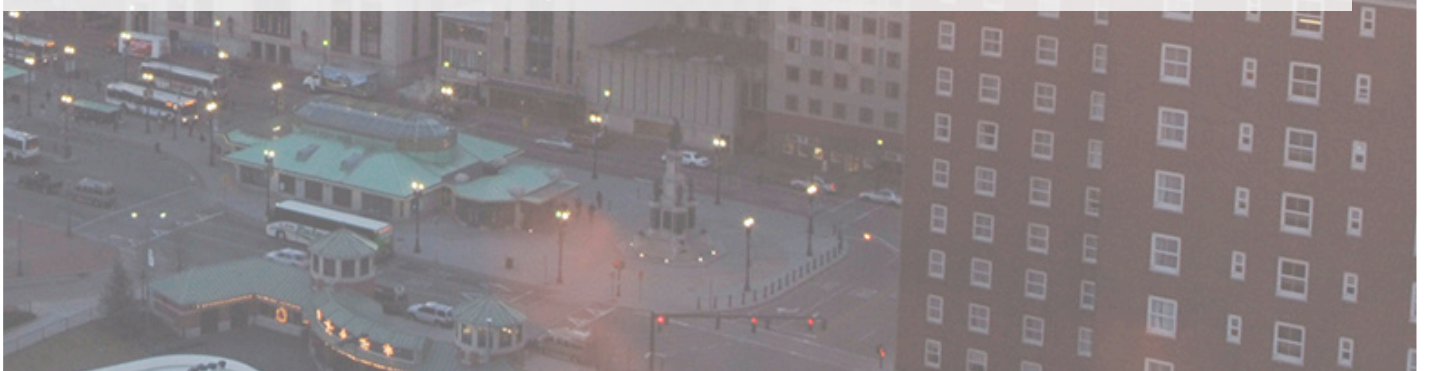
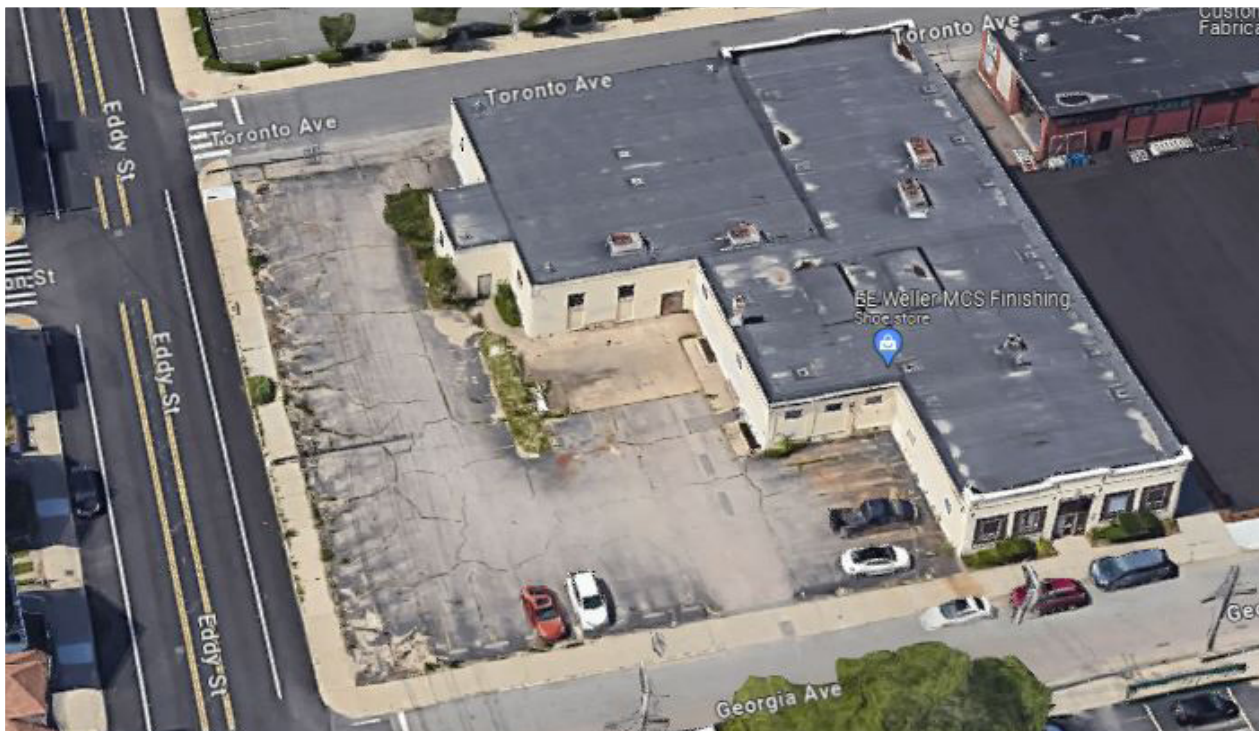


sweeney

REAL ESTATE & APPRAISAL

INDUSTRIAL FOR LEASE

253 GEORGIA AVENUE PROVIDENCE - RHODE ISLAND



One Turks Head Place, Suite 850 • Providence, Rhode Island 02903
T: 401.331.9300 • F: 401.331.9306 • www.sreari.com



KEVIN CASEY | KCASEY@SREARI.COM | 401-331-9300 | 401-464-2663

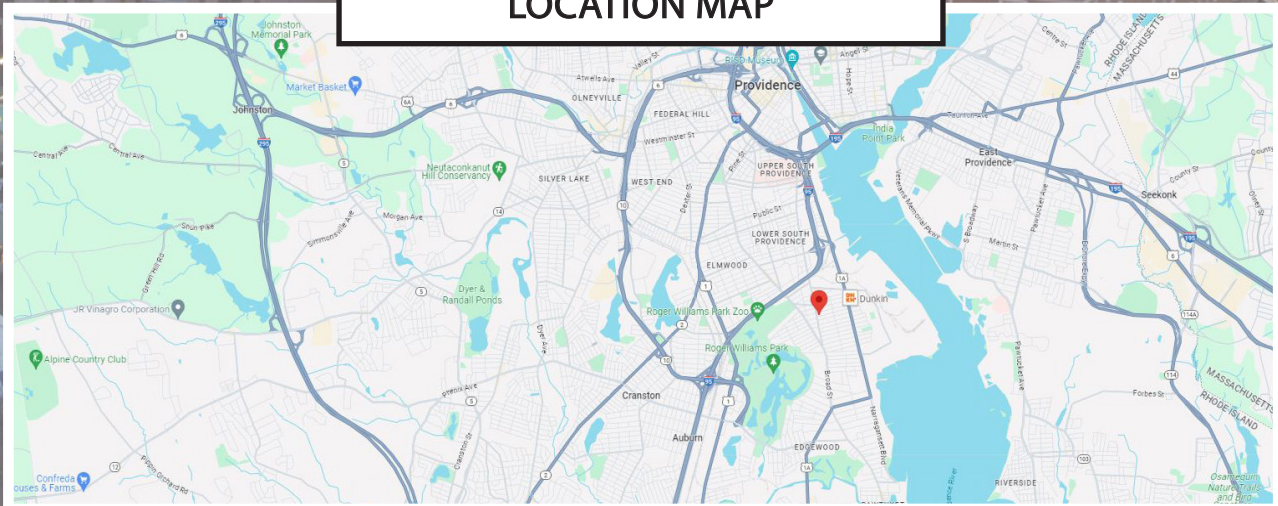
253 GEORGIA AVENUE PROVIDENCE - RHODE ISLAND

RENTAL RATE: \$15/SF
LEASE TYPE: MG

PROPERTY DETAILS

- Manufacturing Space
- 14,822± SF Building
- 31,708± SF of Land
- Single Level
- Zoned Industrial (M-1)
- 16 FT Ceilings
- One (1) Drive in Door
- Less Than One Mile to I-95
- Frontage on Georgia Ave,
Toronto Ave & Eddy St

LOCATION MAP



KEVIN CASEY | KCASEY@SREARI.COM | 401-331-9300 | 401-464-2663

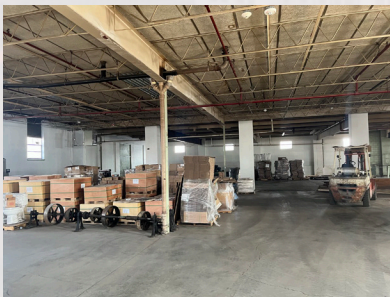
sweeney

REAL ESTATE & APPRAISAL

INDUSTRIAL FOR LEASE

253 GEORGIA AVENUE PROVIDENCE - RHODE ISLAND

ADDITIONAL PHOTOS



All information furnished regarding property for sale, rental or financing is from sources deemed reliable. But no warranty or representation is made as to the accuracy thereof and same is submitted subject to errors, omissions, change or price, rental or other conditions, prior sale lease or financing or withdrawal without notice.



One Turks Head Place, Suite 850 • Providence, Rhode Island 02903
T: 401.331.9300 • F: 401.331.9306 • www.sreari.com



KEVIN CASEY | KCASEY@SREARI.COM | 401-331-9300 | 401-464-2663