

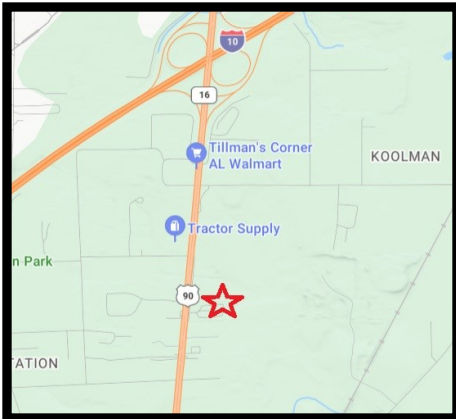


Commercial and Industrial Real Estate
Sales and Leasing
Property Management

Joey Betbeze
3345 Halls Mill Road
Mobile, Alabama 36606

Office: 251-476-4111
Cell: 251-554-8145

JoeyBetbeze@BetbezeRealty.com
www.BetbezeRealty.com



- 2,000 square foot retail space.
 - Open vanilla box.
 - Excellent location with great access and visibility.
 - Ample Parking.
-
- **\$2,000.00/Mo. NNN**

FOR LEASE **2,000 S.F. RETAIL SPACE**

5651 GOVERNMENT BLVD.
Mobile, Alabama 36582

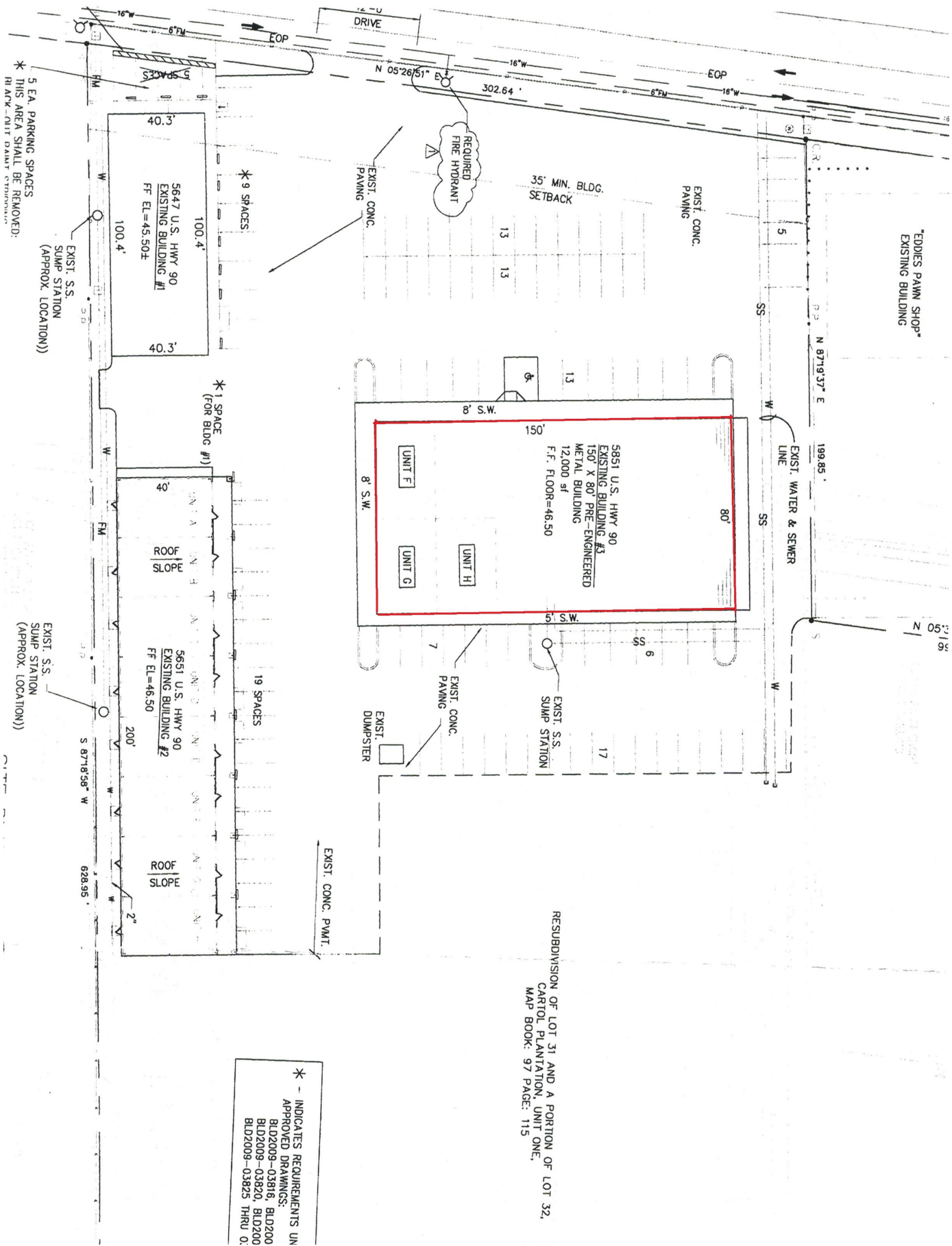


Approximately 2,000 square foot Retail Space.
Conveniently located on Highway 90.



Located on the east side of Highway, approximately one mile South of the intersection of Highway 90 and Interstate 10.

The information above has been obtained from sources believed reliable. While we do not doubt its accuracy we have not verified it and make no guarantee, warranty or representation about it. It is your responsibility to independently confirm its accuracy and completeness. Any projections, opinions, assumptions, or estimates used are for example only and do not represent the current or future performance of the property. The value of this transaction to you depends on tax and other factors which should be evaluated by your tax, financial, and legal advisors. You and your advisors should conduct a careful, independent investigation of the property to determine to your satisfaction the suitability of the property for your needs.



* - INDICATES REQUIREMENTS UN
 APPROVED DRAWINGS:
 BLD2009-03816, BLD200
 BLD2009-03820, BLD200
 BLD2009-03825 THRU 0.

Floor Plan



Area Map

