



Office For Sublease

Michael Gelfman, SIOR

Executive Vice President
+1 952 897 7875
michael.gelfman@colliers.com

Nathan Karrick

Vice President
+1 952 897 7722
nathan.karrick@colliers.com

1650 W 82nd Street Bloomington, MN

Office Space for Sublease at Southpoint Tower

- > Fully furnished, move-in ready opportunity
- > 17,294 RSF Available
- > High end finishes with amazing views
- > Covered ramp parking available
- > Newly renovated building amenities including fitness center, conference facilities and outdoor space
- > Easy accessibility to 35W and I-494
- > Restaurants and shopping within walking distance

1600 Utica Avenue South, Suite 300
St. Louis Park, MN 55416
P: +1 952 897 7700
colliers.com

Copyright © 2024 Colliers International. Information herein has been obtained from sources deemed reliable, however its accuracy cannot be guaranteed. The user is required to conduct their own due diligence and verification.

For Lease

Property Highlights

Civic Address: 1650 W 82nd Street
Bloomington, MN

Currently Available: 17,294 RSF

Sublease Term: 4/1/2025 - 8/31/2026

Parking: Covered surface

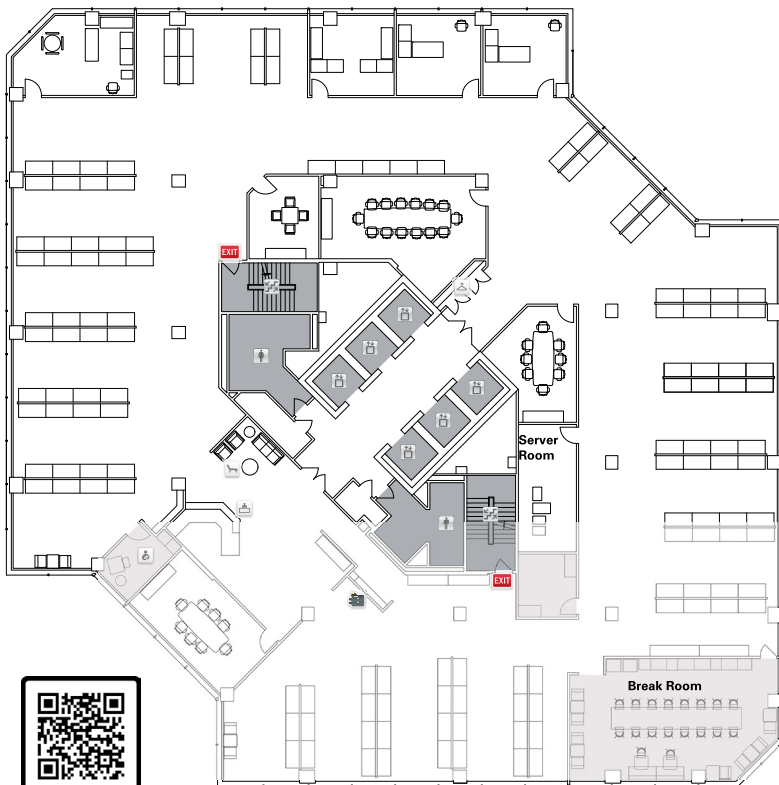
Rental Rates: **\$9.50 PSF Gross**

Available Suites: Suite 900: 17,294 SF



Floor Plan

Suite 900 | 17,294 RSF



SCAN ME

View 3D Tour

Contact us:

Michael Gelfman, SIOR

Executive Vice President
+1 952 897 7875
michael.gelfman@colliers.com

Nathan Karrick

Vice President
+1 952 897 7722
nathan.karrick@colliers.com

Colliers

1600 Utica Avenue South, Suite 300
St. Louis Park, MN 55416
P: +1 952 897 7700