

Available Acres 1.33

Land For Lease

Available SF 57,935



Address:

791 E Arrow Hwy, Azusa, CA 91702

Cross Streets:

Citrus Ave/Arrow Hwy

Great Multi Purpose Commercial Facility
Auto Dealer/Repair, General Contractor, School, Supply Ctr, Etc
6,570 SF Office Showroom/Meeting Center
2 Shop/Warehouse Bldgs (3,800 & 2,400 SF) - 16 Total Bays
Busy Commercial Area w/Great Access to 210 Fwy

Lease Rate/Mo:	\$26,070	Available Acres:	1.33 Ac	Gas:	Yes	Specific Use:	Industrial
Lease Rate/SF:	\$0.45	Available SF:	57,935 SF	Water:	Yes	Zoning:	CAH
Lease Type:	Gross	Building SF:	12,730 SF	Sewer:	Yes	Rail Service:	
Lease Terms:	3-5 years w/Periodic COLA's	Yard:	Fenced / Paved	Electric:		Market Area:	210 Corridor
Sale Price/SF:	NFS			Fiber:		APN:	8622023003
Sale Price:	NFS						

Listing Company: Dorin Realty Company
Agents: [Mark Whitman 213-627-0007](mailto:MarkWhitman@dorinrealty.com)

Listing #: 67d207ce1073f17b4be140b2

Listing Date: 03/12/2025

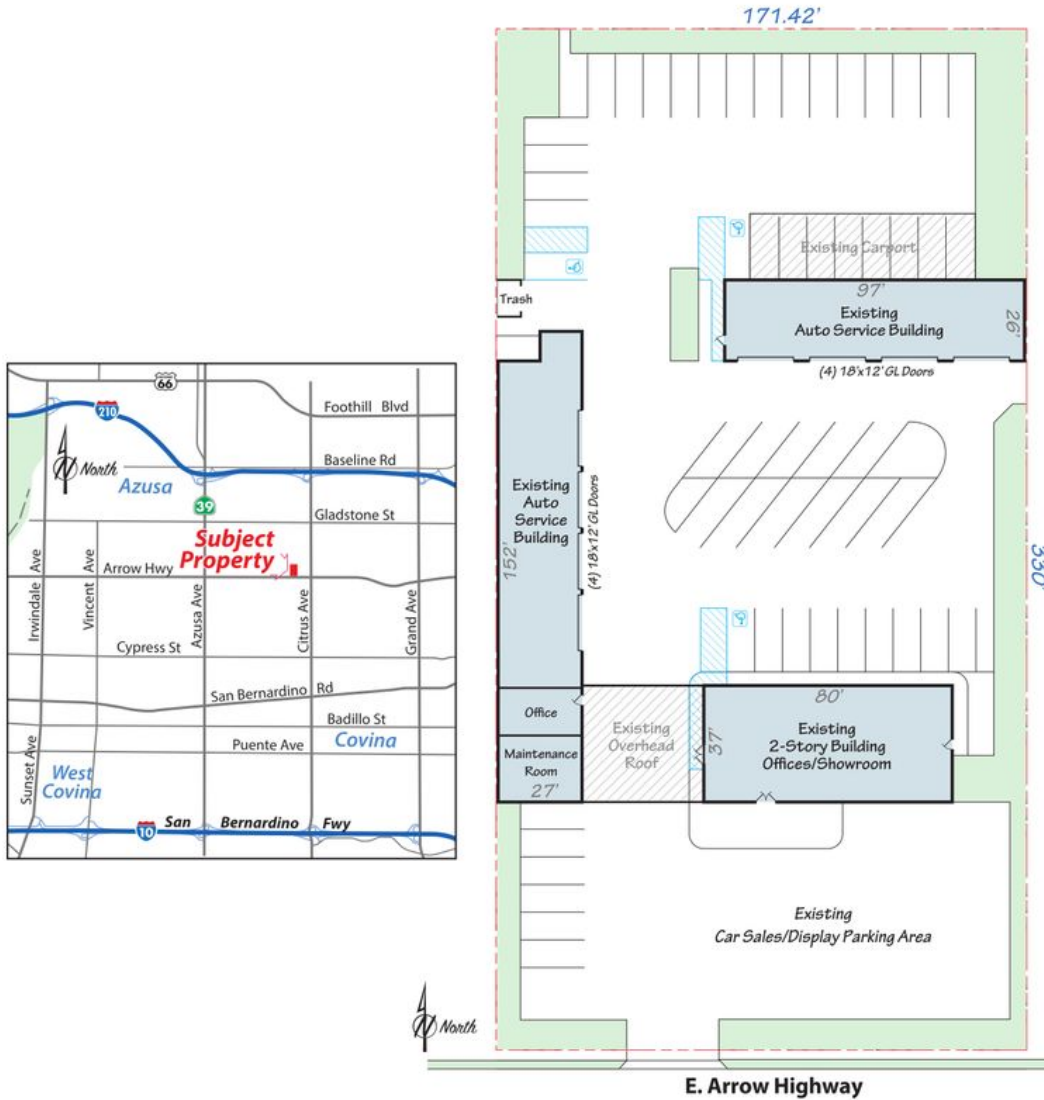
FTCF: CB250N000S000

Notes: Buildings 3,776 & 2,400 SF. Two story 6,554 SF office showroom. Easements: PTR. Fenced and paved. Bldg SF and description: 2-8 bay warehouse/shop. All details must be verified.

Mark Whitman
mwhitman@dorinrealty.com
213-627-0007

AIRCRE Powered by MOODY'S

791 E. Arrow Hwy., Azusa, CA 91702



Contact exclusive agent:

Mark Whitman

Lic. No. 00918875

mwhitman@dorinrealty.com

213-627-0007 Ext 124

4555 Pacific Blvd., Vernon, CA 90058-2207

Industrial and Commercial Real Estate Specialists

Since 1959

www.dorinrealty.com

The information contained herein is from sources we believe to be reliable but, we do not guarantee its accuracy. All measurements & dimensions are approximations and are not to scale. Clients are encouraged to verify their accuracy.

Mark Whitman
mwhitman@dorinrealty.com
213-627-0007

AIRCRE Powered by **MOODY'S**