

# 216 E Sheridan St



Sunbelt Business Advisors

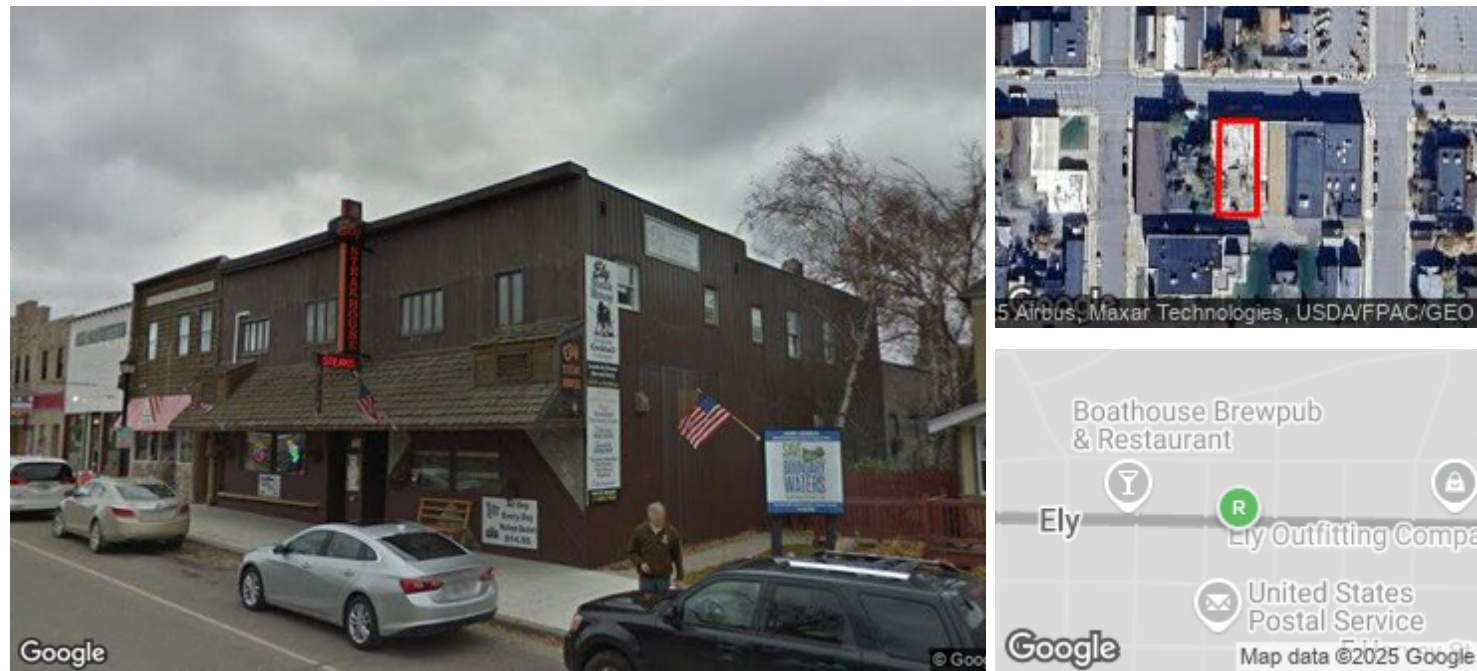
1300 Godward Street NE, Suite 600 Minneapolis, MN 55413 | 952-681-9281

## 216 E Sheridan St

216 E Sheridan St, Ely, MN, 55731

Retail: Mixed Use

Prepared on February 28, 2025



### Property Features

Sub Type	Mixed Use	Primary Constr. Type	Wood
Zoning	-	Occupancy Type	Single Tenant
Building Status	Existing	Parcels	030-0010-00980
Building Size	8,078 SF	Legal Owner	Bambas, Duke S
Land Size	0.14 Acres / 6,229 SF	Submarket	MN - Out of Metro North
Property Rent	\$13.46/SF (Average)	County	St. Louis
Number of Buildings	1	Parking Spaces	-
Number of Floors	2	Parking Ratio	-
Year Built	1910	In Opportunity Zone	Yes

### Listings

1 Listing | 8,078 SF | \$390,000

Type	Condo	Space Use	Suite	Available Space	Rate	Available
For Sale	No	Retail	-	8,078 SF	\$390,000	Now

### Contact

**Tony Bodway**  
952-681-9281  
tbodway@sunbeltmidwest.com

Sunbelt Business Advisors