

PREMIER OFFICE & INDUSTRIAL SPACE AVAILABLE



SPACE HIGHLIGHTS

- **17,206 SF of Office and Industrial Space**
- **Free, Convenient On-site Parking**
- Positioned in a **well-maintained** and **secured** business park setting
- Prominent I-35 monument signage available
- **Google Fiber Available**
- **Clear visibility** and **instant accessibility** to I-35
- **Great location** central to the city's major thoroughfares; moments from the Plaza, Crown Center, Westport and Downtown

LEASING CONTACT

JEREMIAH DEAN, CCIM

P (816) 701-5012

jdean@copaken-brooks.com

MOLLY CRAWFORD MUNNINGHOFF

P (816) 701-5013

mcrawford@copaken-brooks.com

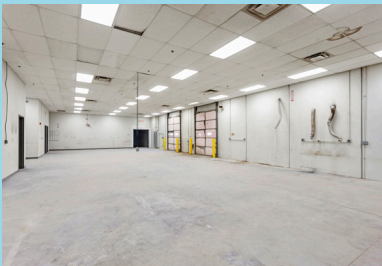
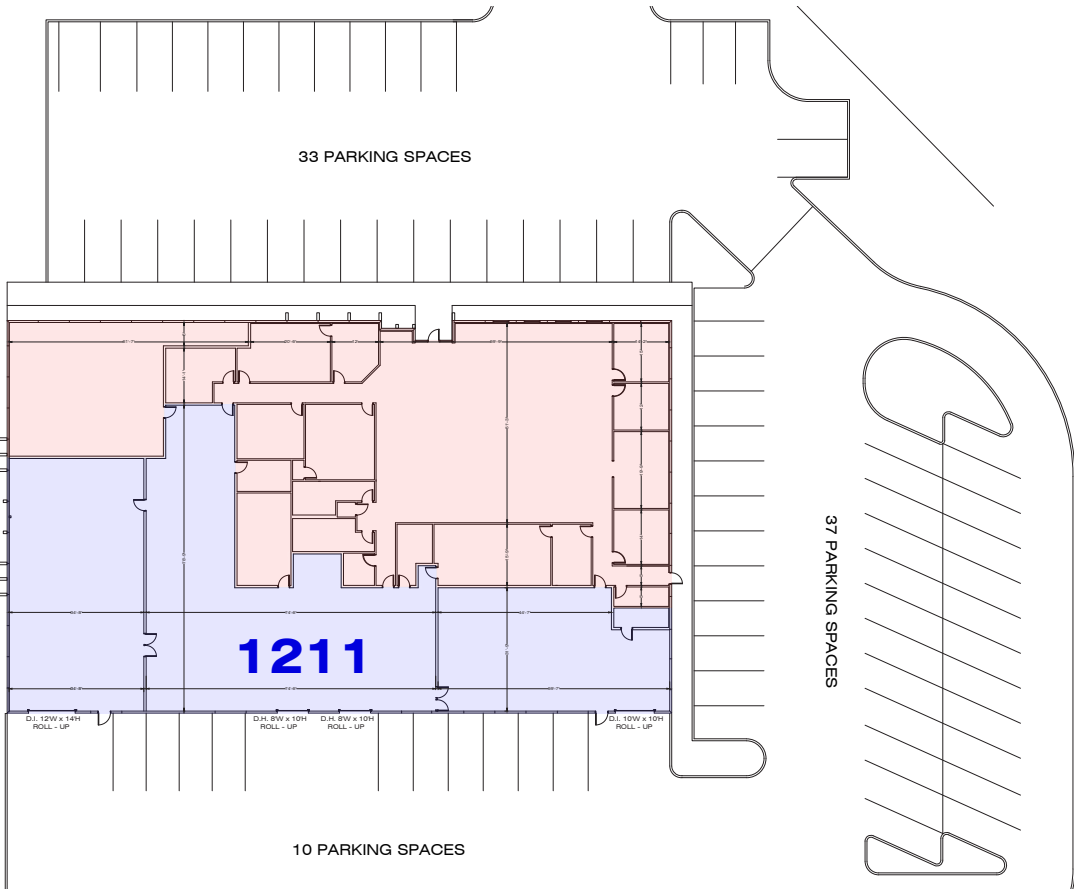
1211 W CAMBRIDGE CIR DR

Total SF Available 17,206 SF **Dock High Doors** 2 (8'x10')

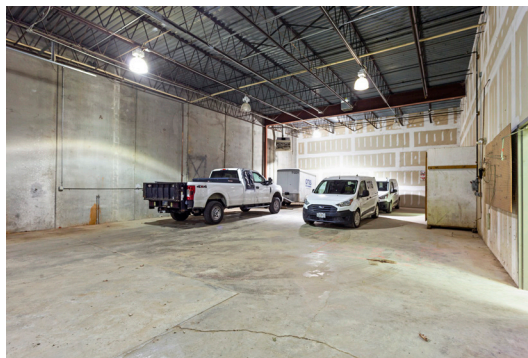
Office SF 9,374 SF **Drive-In Doors** 1 (12'x14') & 1 (10'x10')

Warehouse SF 7,832 SF **Ceiling Height** 16' 6"

Signage Monument Signage Visible to I-35 **Notes** Highway Visibility
Google Fiber Available



PREMIER OFFICE & INDUSTRIAL SPACE AVAILABLE



LEASING CONTACT

JEREMIAH DEAN, CCIM

P (816) 701-5012

jdean@copaken-brooks.com

MOLLY CRAWFORD MUNNINGHOFF

P (816) 701-5013

mcrawford@copaken-brooks.com

All information furnished regarding property for sale or lease is from sources deemed reliable, but no warranty or representation is made as to the accuracy thereof and the same is subject to errors, omissions, changes of prices, rental or other conditions, prior sale or lease, or withdrawal without notice.