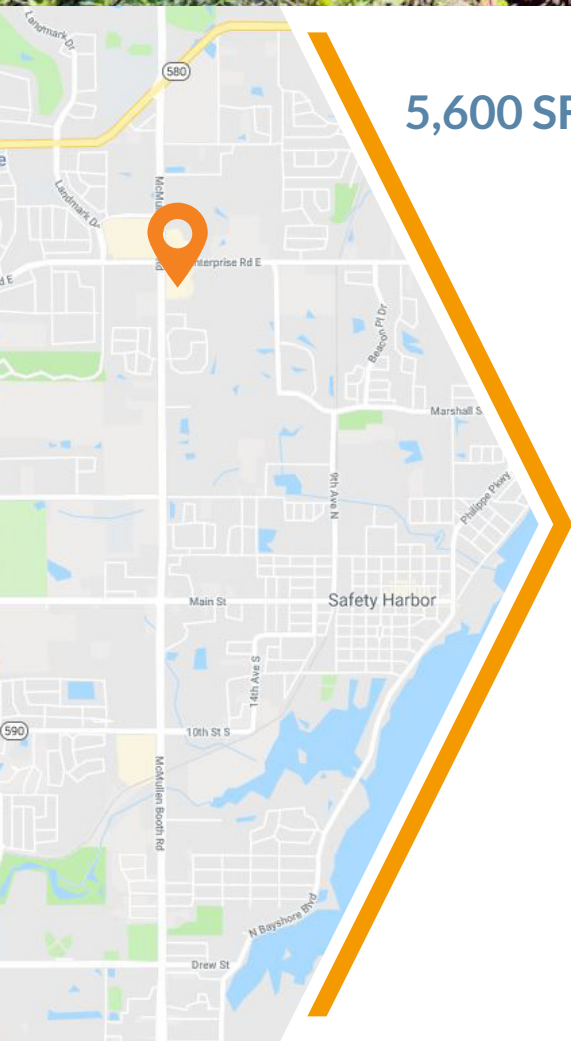
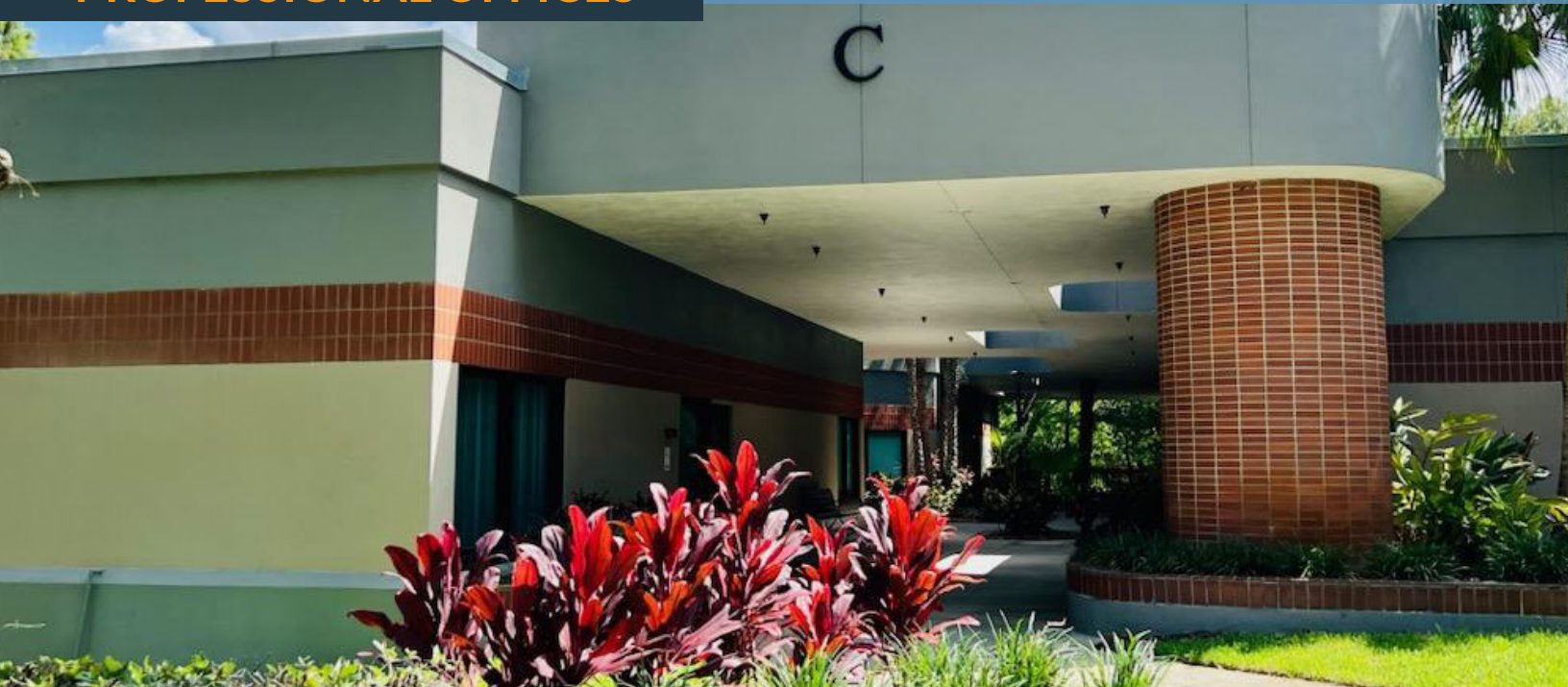


NORTHWOOD COMMONS - BLDG C PROFESSIONAL OFFICES

2454 N McMullen Booth Rd., Clearwater, FL 33759



5,600 SF OFFICE SPACE - NOW AVAILABLE FOR LEASE

- » Ground floor suite with 24/7 access to electricity
- » Within close proximity to Mease Countryside Hospital
- » SEC McMullen Booth Road and Enterprise Road
- » Located between SR 60 and SR 580
- » Strategically located near Bay Area airports
- » Parking Ratio: 4.3/1,000 SF
- » Located in Countryside, near retail shops, restaurants, and services
- » Convenient lunch break and after hours accessibility
- » 24/7 building access

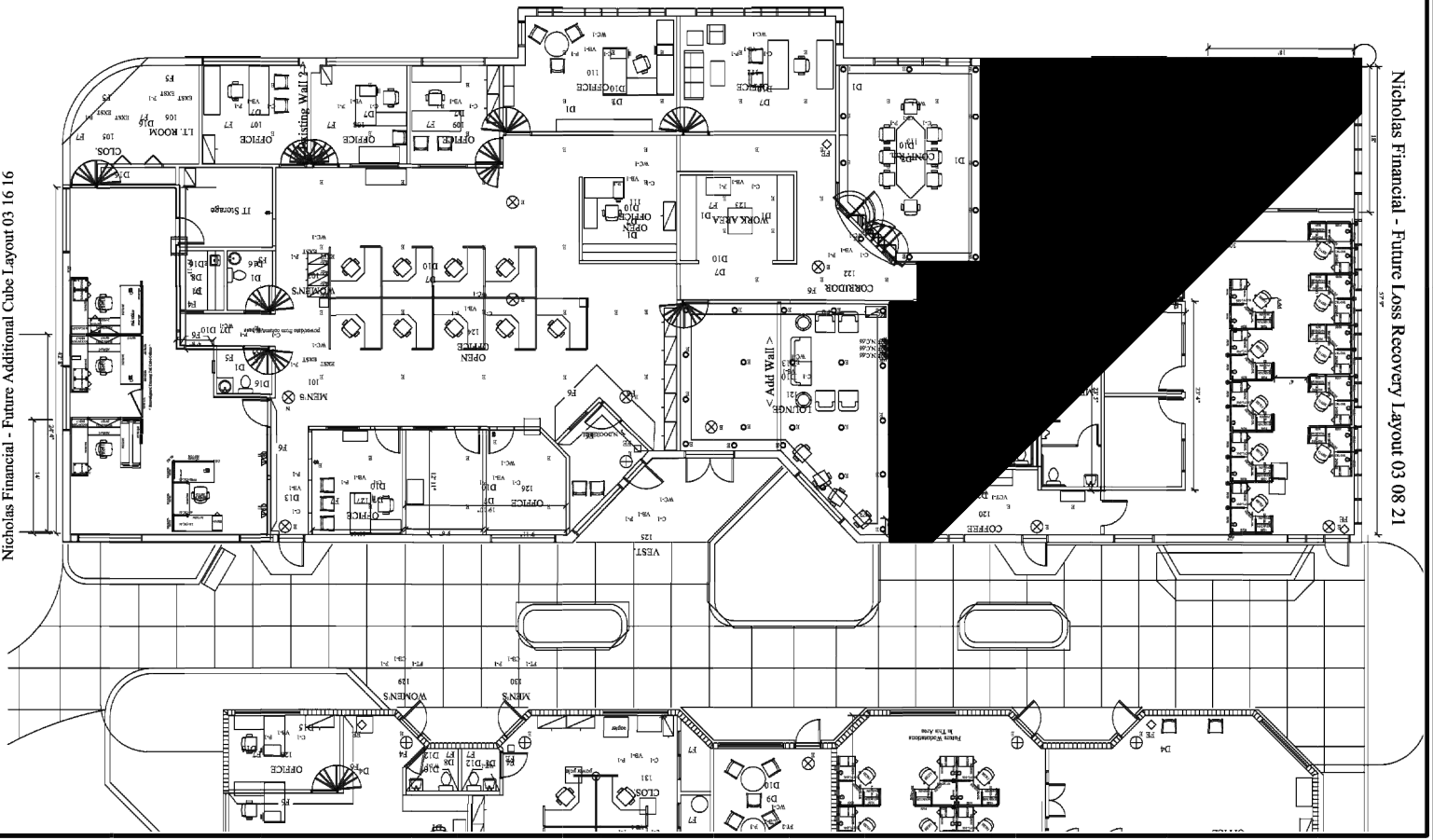
Leasing Contact: Wanda De Boer | Managing Director - Retail Services
(Cell) 813-690-3020 | (Office) 813-269-0702 | wdeboer@rpm-realty.com



NORTHWOOD COMMONS PROFESSIONAL OFFICES

2454 N McMullen Booth Rd., Clearwater, FL 33759

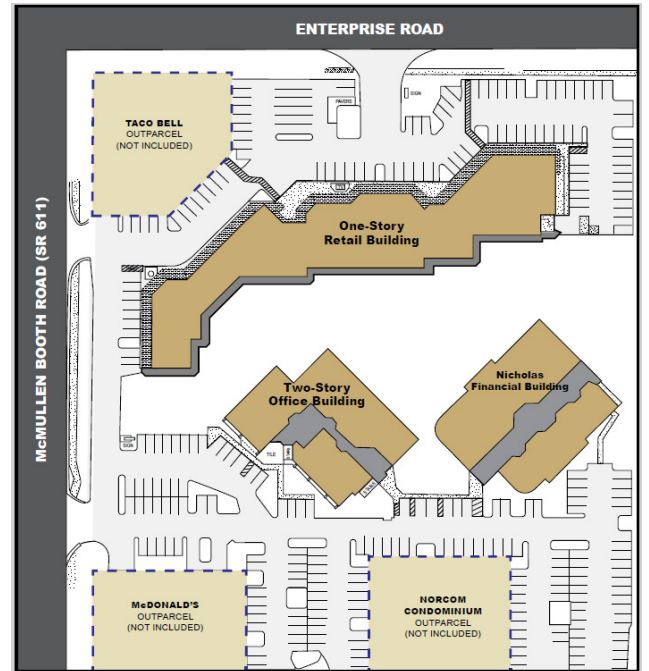
Nicholas Financial - Future Additional Cube Layout 03 16 16



Nicholas Financial - Future Loss Recovery Layout 03 08 21



Photo courtesy of CoStar

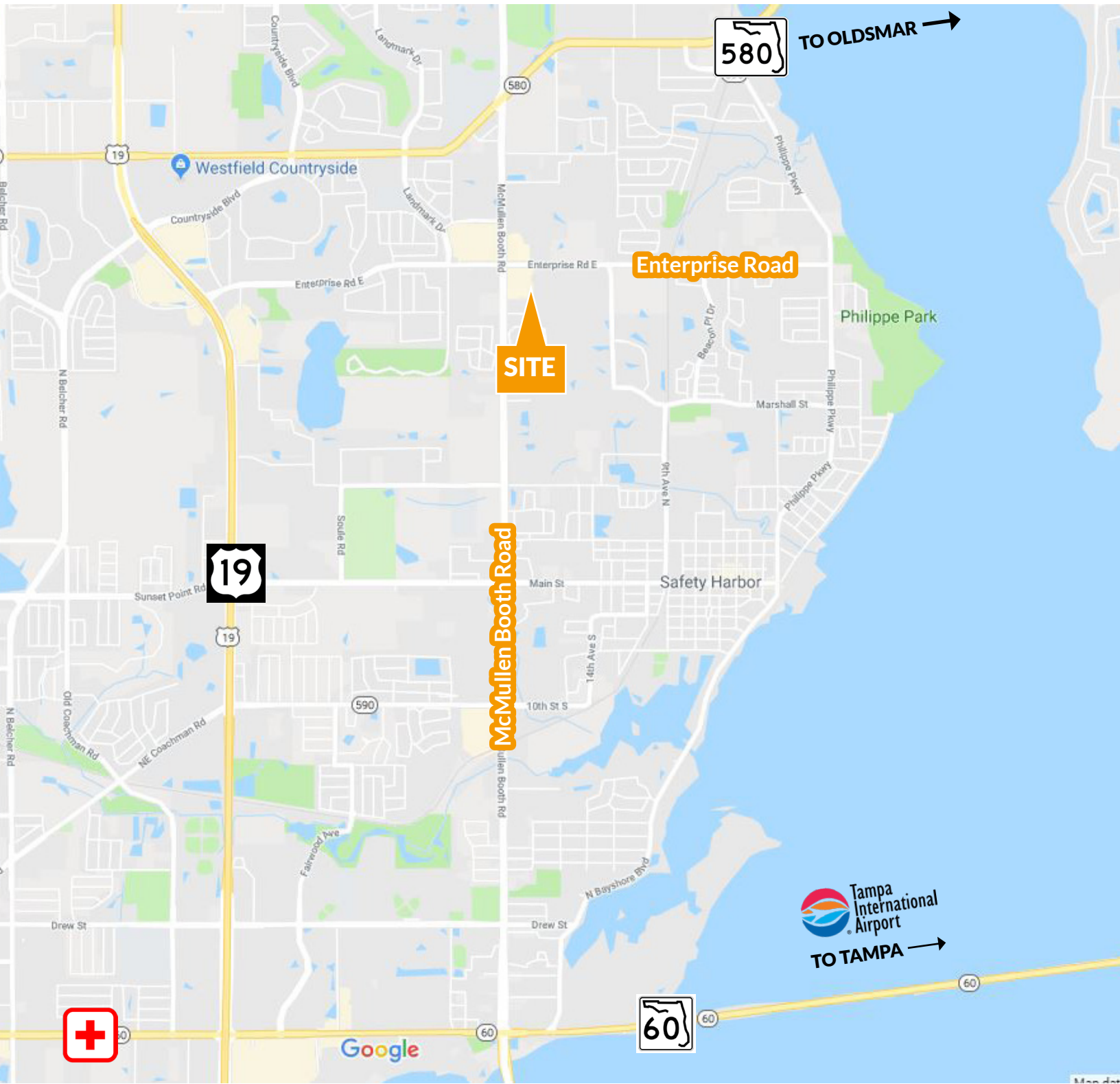


The information contained herein was obtained from sources believed reliable; however, RPM Realty Management, LLC makes no guarantees, warranties, or representations as to the completeness or accuracy thereof. The presentation of this property is submitted subject to errors, omissions, change of price or conditions prior to sale or lease, or withdrawal without notice.



NORTHWOOD COMMONS PROFESSIONAL OFFICES

2454 N McMullen Booth Rd., Clearwater, FL 33759



The information contained herein was obtained from sources believed reliable; however, RPM Realty Management, LLC makes no guarantees, warranties, or representations as to the completeness or accuracy thereof. The presentation of this property is submitted subject to errors, omissions, change of price or conditions prior to sale or lease, or withdrawal without notice.

