

Goldenwest Corporate Campus

5151 S 375 E
Washington Terrace, Utah 84405

 Goldenwest
Credit Union



Jones Lang LaSalle Brokerage, Inc.

3rd Floor: **21,776** RSF

Building Highlights



108,880 RSF
5 Stories



21,776 RSF
Available



Delivering
Q4 2023



\$28.50/SF
NNN



Ample
Parking



Amazing 360
Degree Views of
Weber County



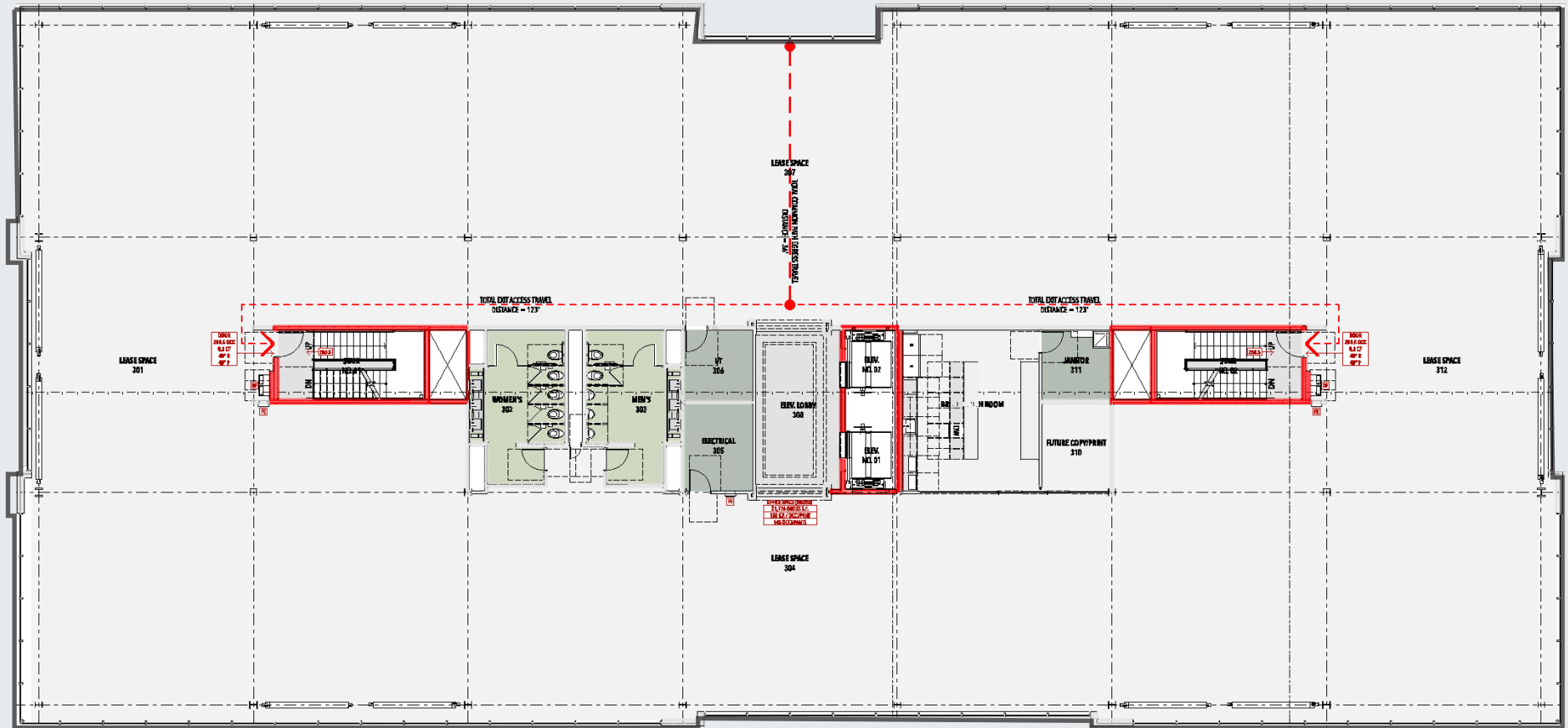
High
Performance,
Low Energy Use
Building



Floor to
Ceiling Glass

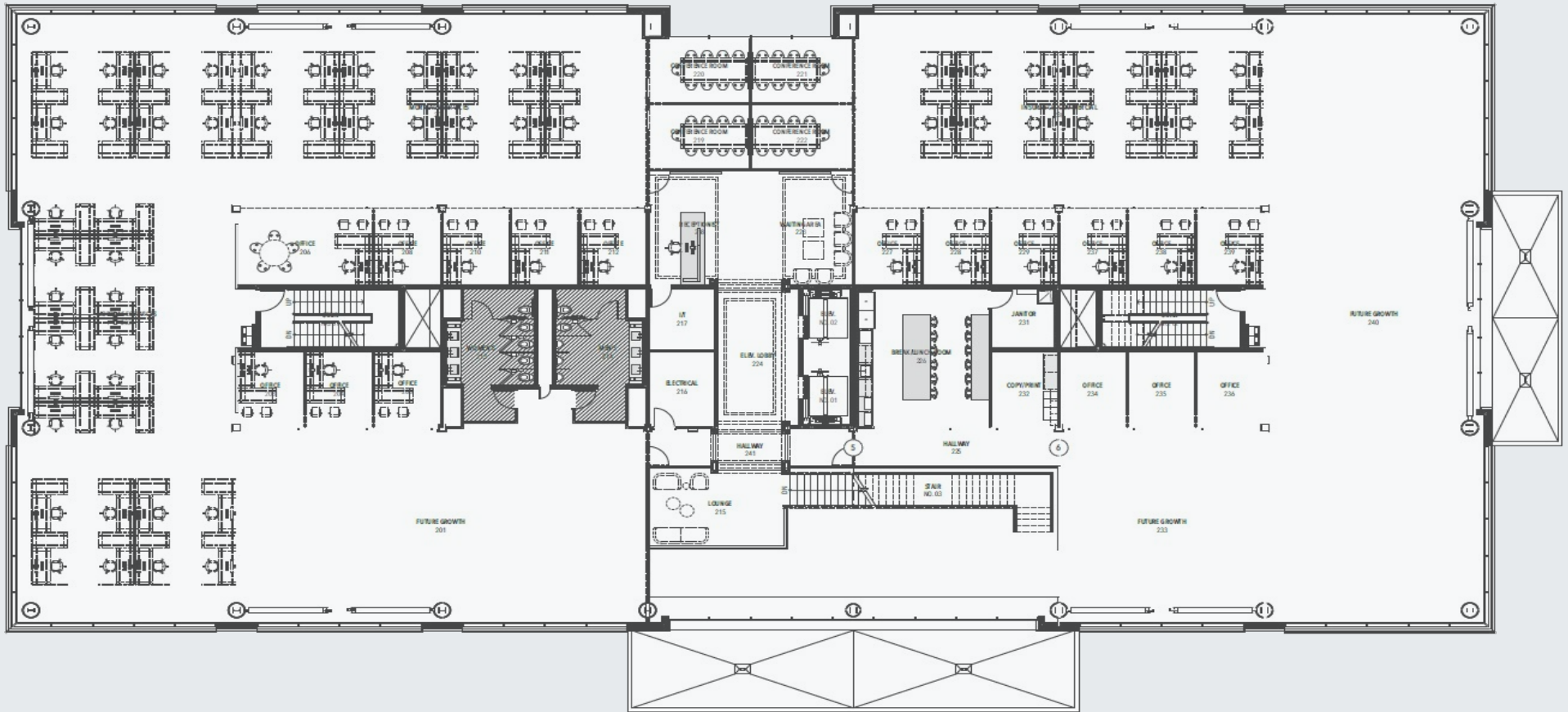


Condition
Grey Shell



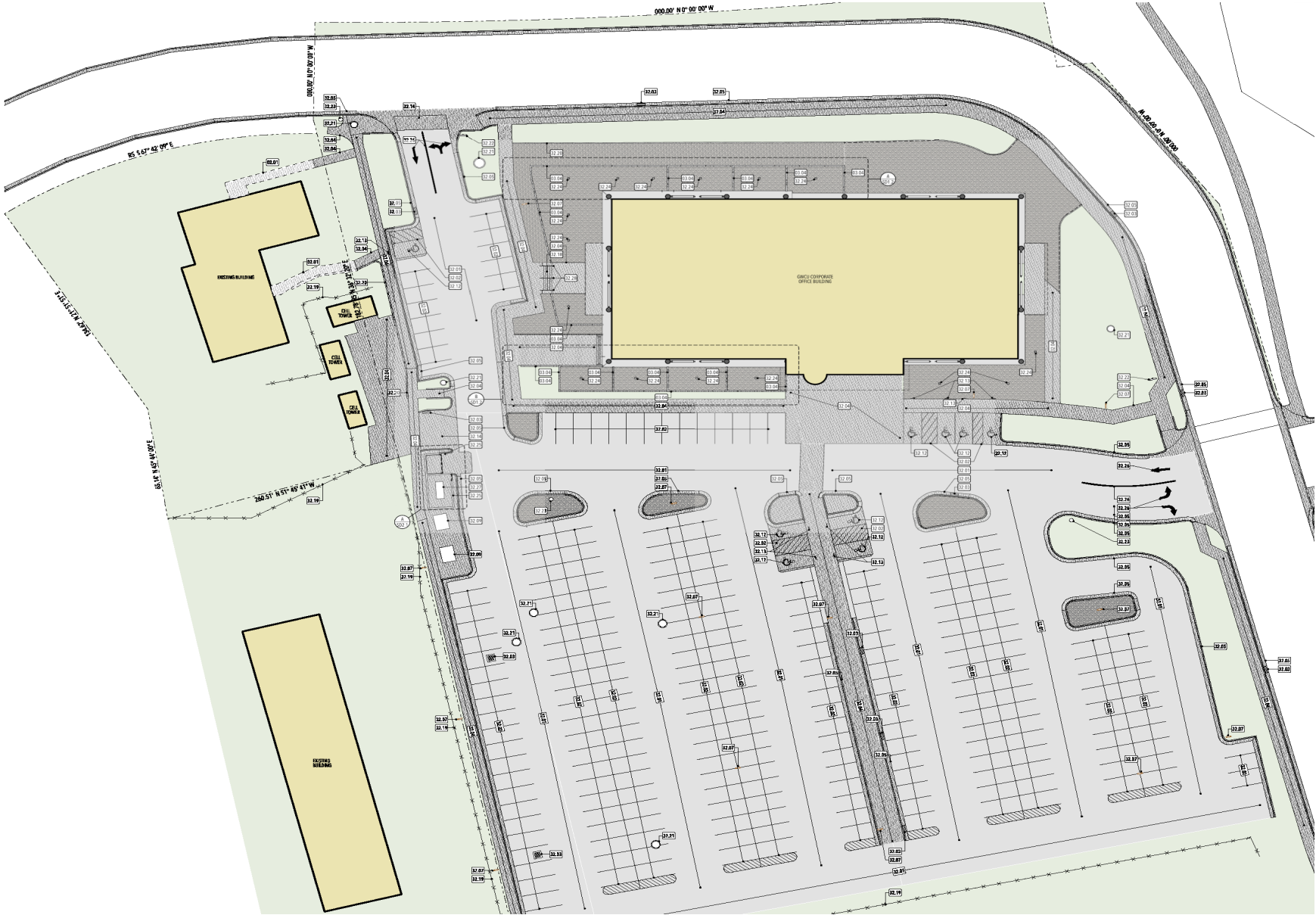
Floor Plan

Floor 3: 21,776 RSF Available



Potential Buildout

Floor 3: 21,776 RSF Available



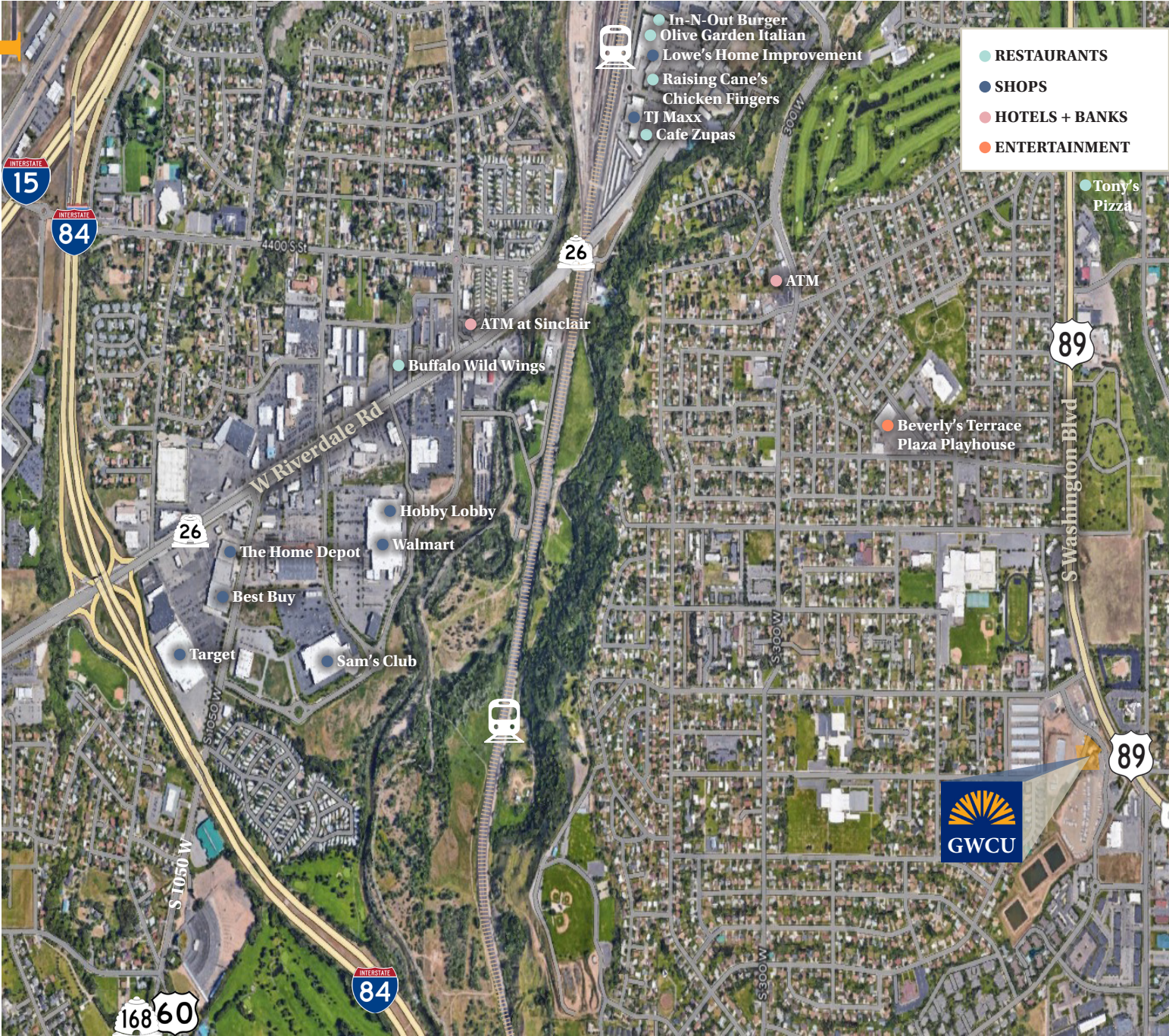
Site Plan

108,880 RSF



Sample Buildout

Area Map



Easy Access to **I-84, I-15 & Hwy 89**

Conveniently located near shopping centers and restaurants



Bronson Rawlins
+ 1 801 456 9513
bronson.rawlins@jll.com

Brandon Rawlins
+ 1 801 456 9521
brandon.rawlins@jll.com

David Nixon
+ 1 801 456 9518
david.nixon@jll.com