

2025 DEMOGRAPHICS

1 Mile | 3 Miles | 5 Miles



Population

19,527 | 133,104 | 330,367



Daytime Population

13,053 | 144,743 | 318,370



Median Household Income

\$67,258 | \$82,073 | \$77,492

RETAIL FOR LEASE

6148 - 6150 Delmar Boulevard | St. Louis, Missouri 63112

1,783 SF | Lease Rate: \$26.00/SF, NNN | Triple Nets: \$6.99/SF (2026 estimate)

PROPERTY DETAILS

Located in the heart of the Delmar Loop

Many restaurants & entertainment venues within walking distance

Close proximity to top universities - Washington University, & St. Louis University

Delmar Boulevard - 7,441 VPD

Richie Chappuis

314.785.7615
rchappuis@paceproperties.com

Kate Grewe Milford

314.785.7662
kgrewe@paceproperties.com

Lauren Berry

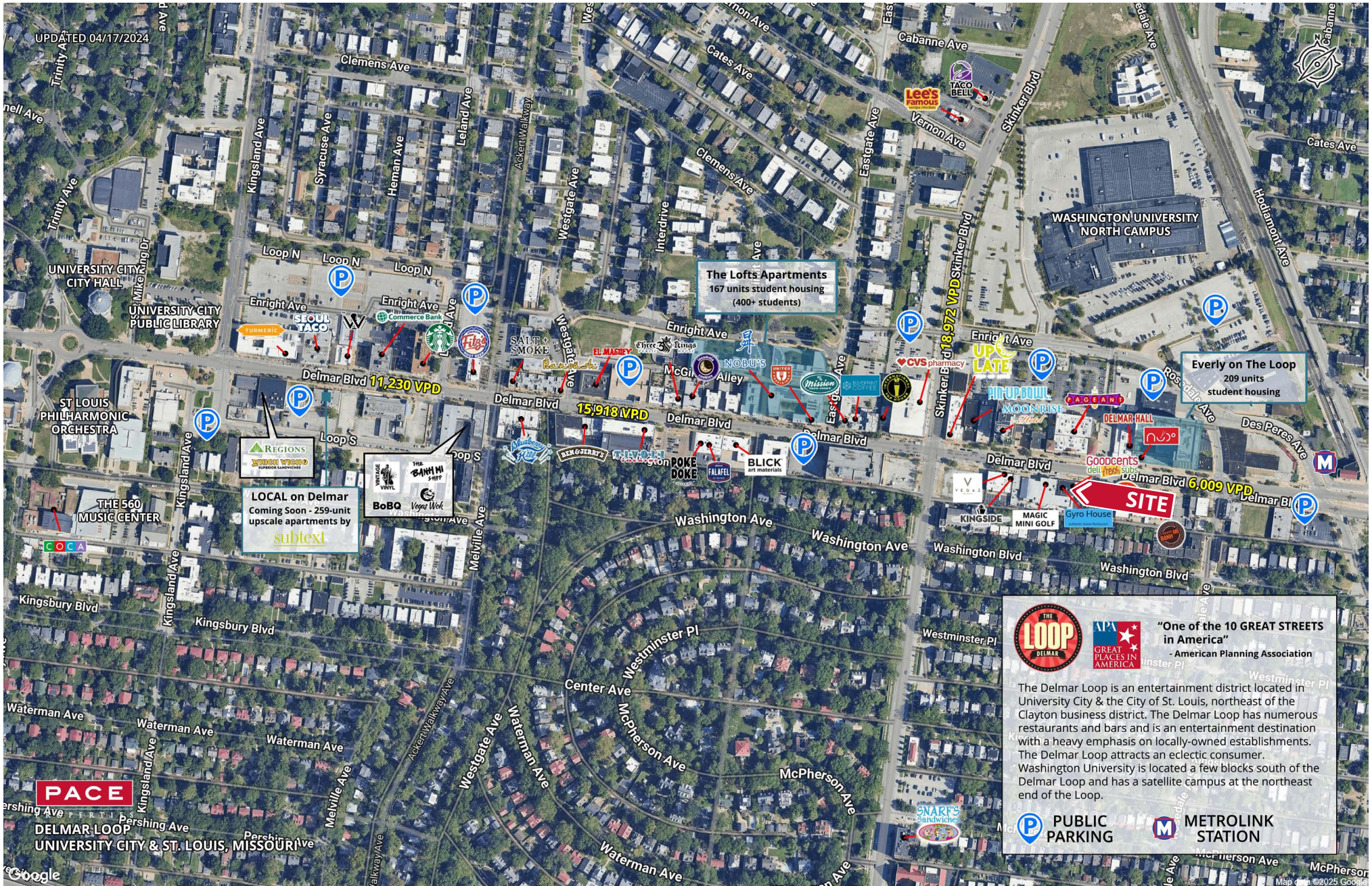
314.785.7632
lberry@paceproperties.com



PACEPROPERTIES.COM | 314.968.9898

1401 South Brentwood Boulevard, Suite 900 | St. Louis, Missouri 63144

The information contained herein is not warranted, although it has been obtained from the owner/landlord of the subject property or from other sources that Pace Properties, Inc. deems reliable, and is subject to change without notice. Owner/landlord and Pace Properties, Inc. make no representations as to the environmental condition of the subject property and recommend tenant's independent investigation.



Trade Area Aerial



"One of the 10 GREAT STREETS in America"
- American Planning Association

The Delmar Loop is an entertainment district located in University City & the City of St. Louis, northeast of the Clayton business district. The Delmar Loop has numerous restaurants and bars and is an entertainment destination with a heavy emphasis on locally-owned establishments. The Delmar Loop attracts an eclectic consumer. Washington University is located a few blocks south of the Delmar Loop and has a satellite campus at the northeast end of the Loop.

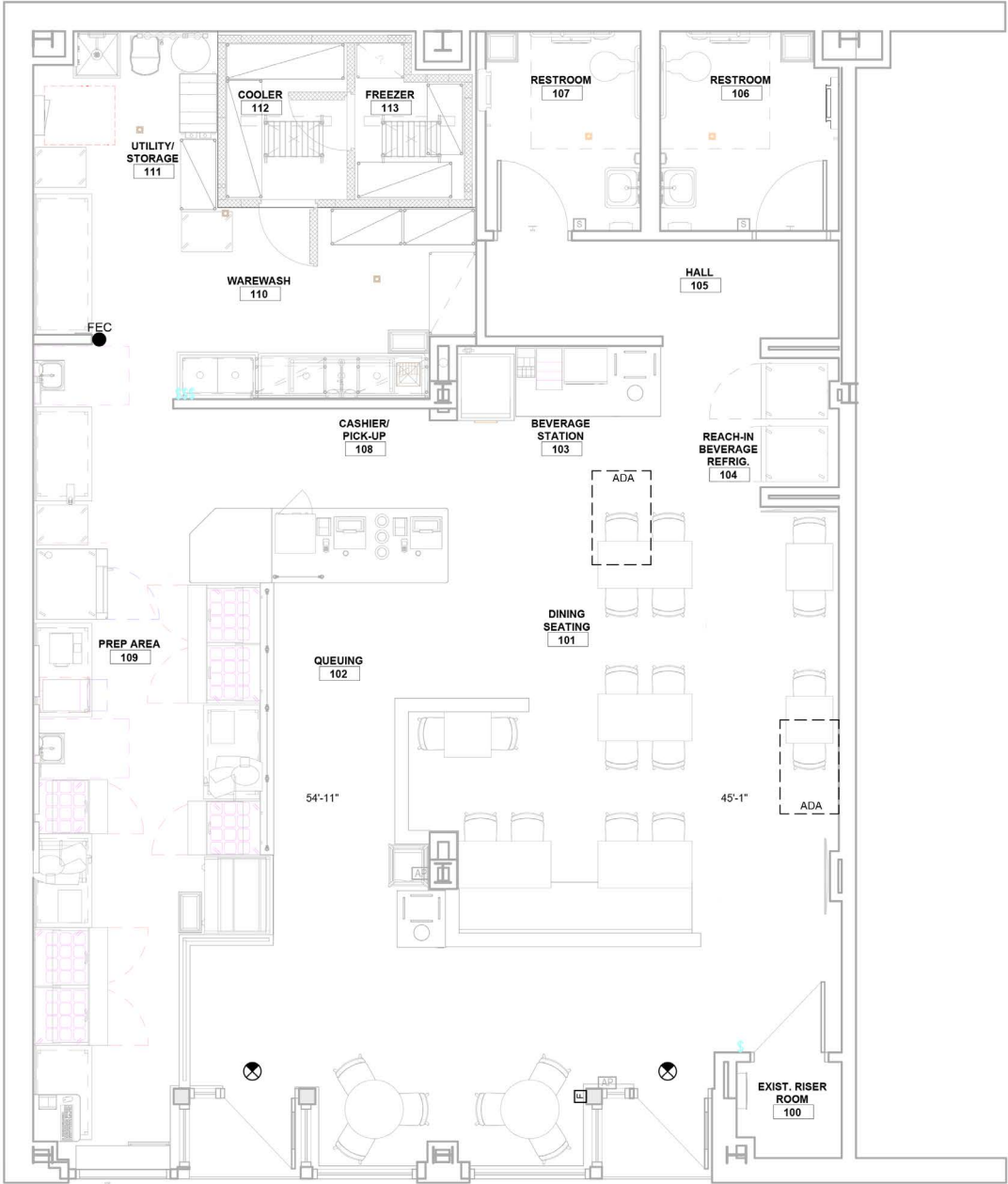
 PUBLIC PARKING  METROLINK STATION

PACEPROPERTIES.COM | 314.968.9898

1401 South Brentwood Boulevard, Suite 900 | St. Louis, Missouri 63144

The information contained herein is not warranted, although it has been obtained from the owner/landlord of the subject property or from other sources that Pace Properties, Inc. deems reliable, and is subject to change without notice. Owner/landlord and Pace Properties, Inc. make no representations as to the environmental condition of the subject property and recommend tenant's independent investigation.

Site Plan



The information contained herein is not warranted, although it has been obtained from the owner/landlord of the subject property or from other sources that Pace Properties, Inc. deems reliable, and is subject to change without notice. Owner/landlord and Pace Properties, Inc. make no representations as to the environmental condition of the subject property and recommend tenant's independent investigation.