

Spencer Mountain Views

2630 Hill Ln, Gastonia, NC 28054

Presented By:
NorthGroup Real Estate



Spencer Mountain Views

2630 Hill Ln, Gastonia, NC 28054

Property Details

Lewis Farms has been in the family since the 1930's.

Price: \$9,900,000

- Multiple Road Frontage with three roads.
- Continuous acreage with more possible.
- Spencer Mountain is the backdrop of the property with spectacular views.

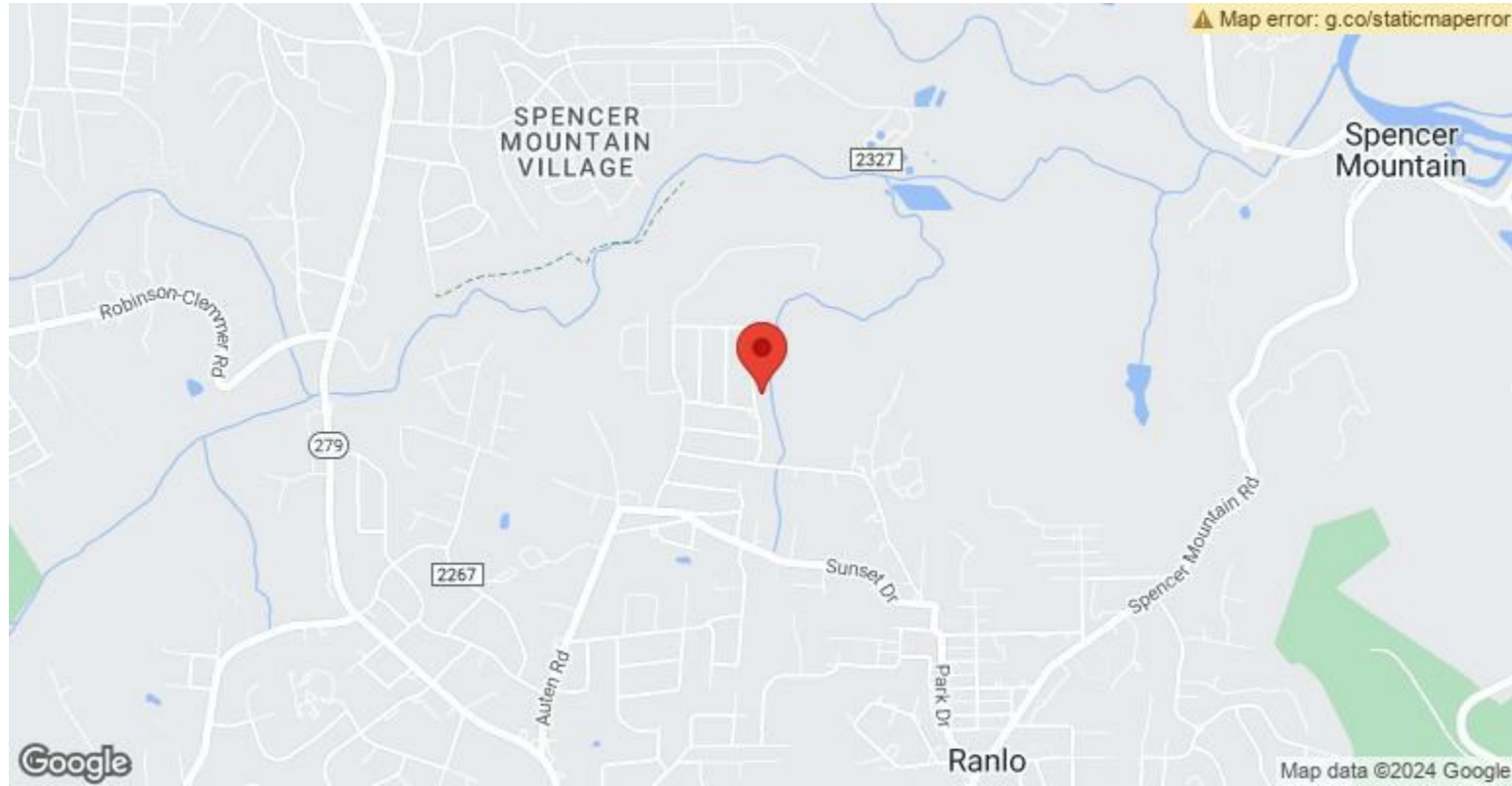
View the full listing here: <https://www.loopnet.com/Listing/2630-Hill-Ln-Gastonia-NC/31158075/>

Price:	\$9,900,000
Property Type:	Land
Property Subtype:	Residential
Proposed Use:	Master Planned Community
Sale Type:	Investment or Owner User
Total Lot Size:	103.65 AC
Sale Conditions:	Redevelopment Project
No. Lots:	1
Zoning Description:	R-12
APN / Parcel ID:	135267

Spencer Mountain Views

2630 Hill Ln, Gastonia, NC 28054

Location



Spencer Mountain Views

2630 Hill Ln, Gastonia, NC 28054

Property Photos



8 parcels with acres

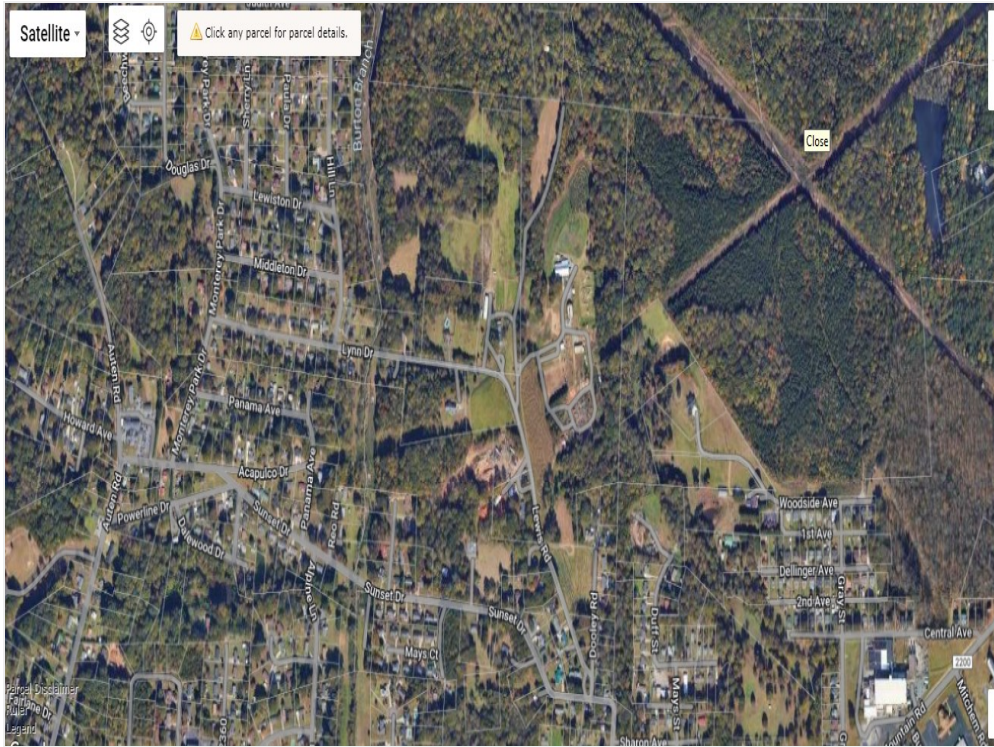


Google Earth View (4)

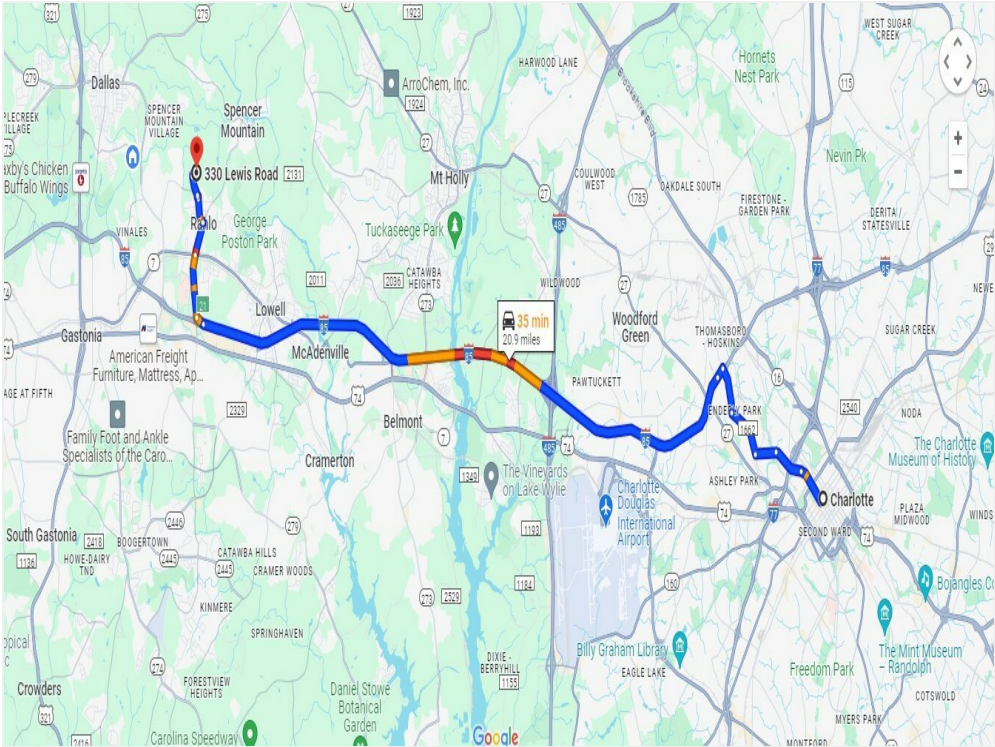
Spencer Mountain Views

2630 Hill Ln, Gastonia, NC 28054

Property Photos



Aerial 8 parcels 3-5-24

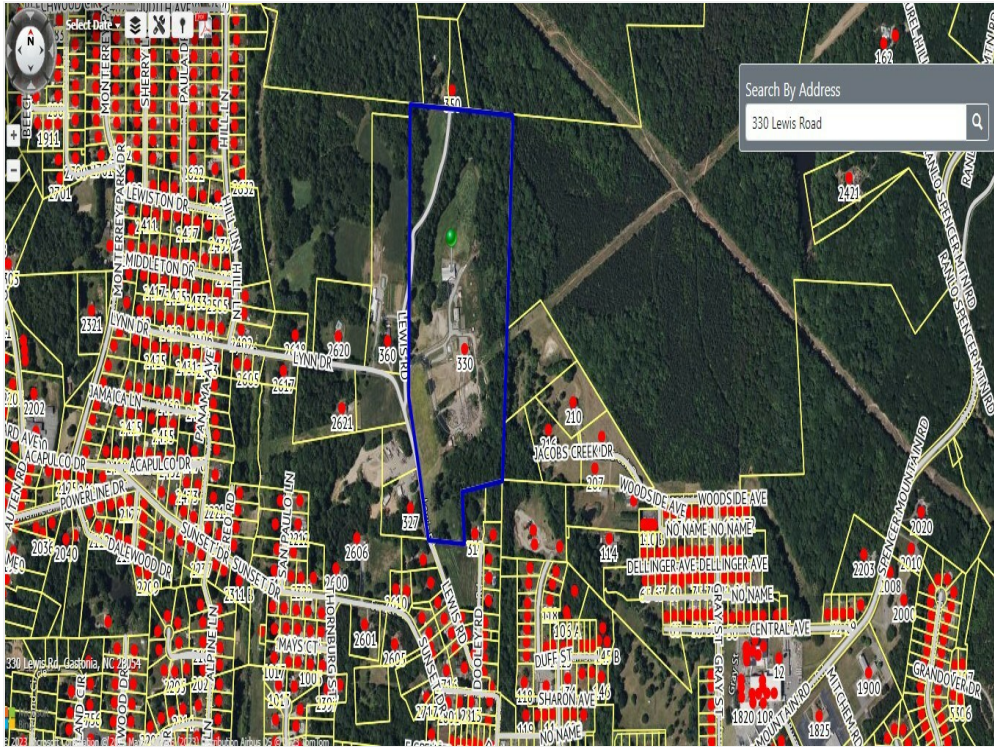


Direction CLT 3-5-24 (1)

Spencer Mountain Views

2630 Hill Ln, Gastonia, NC 28054

Property Photos



Aerial view with street names (15)

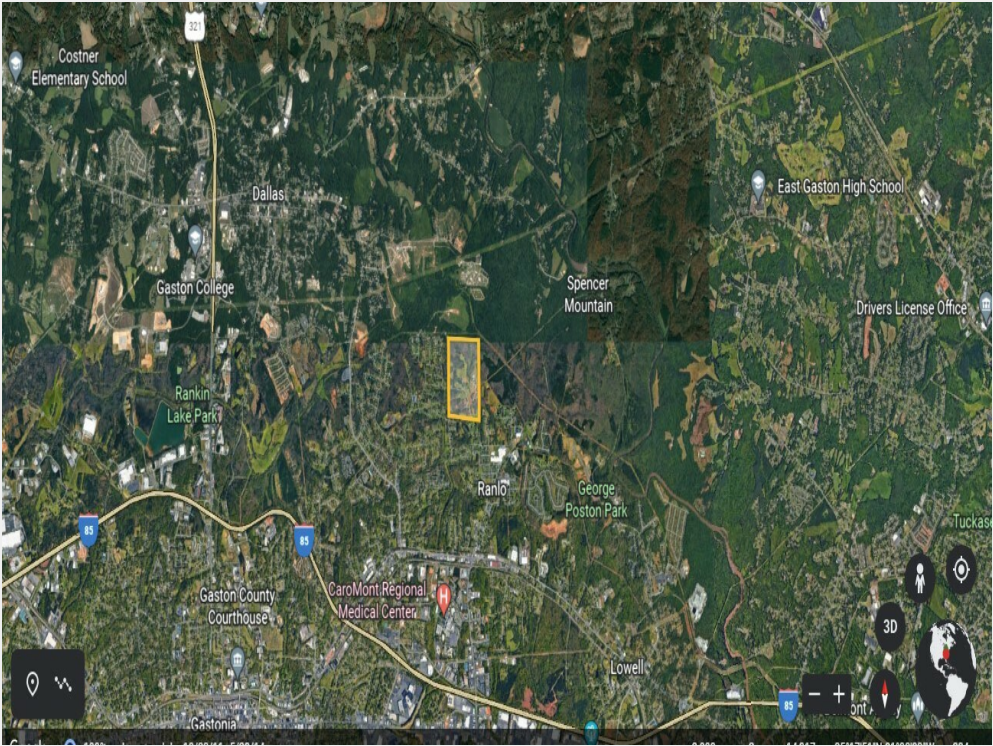


Exit 21 stores 3-5-24

Spencer Mountain Views

2630 Hill Ln, Gastonia, NC 28054

Property Photos



Aerial View Map

Spencer Mountain Views

2630 Hill Ln, Gastonia, NC 28054



Troy Traversie, GRI

troysold1@gmail.com

(704) 574-4901

NorthGroup Real Estate

806 Robinson Clemmer Rd
Dallas, NC 28034