

11701 E. THIRTEEN MILE RD.  
WARREN, MICHIGAN



**SIGNATURE  
ASSOCIATES**  
KNOW SIGNATURE | KNOW RESULTS

RETAIL FOR SALE  
3,364 Square Feet Available



## PROPERTY FEATURES

- 3,364 square feet available
- 12' clear height
- 15 parking spaces
- Operational dry cleaners
- Excellent condition
- Sale Price: \$650,000 (\$193.22/sq. ft.)



For more information, please contact:

**JOE STACK**  
(248) 359 0615

[jstack@signatureassociates.com](mailto:jstack@signatureassociates.com)

**CHRIS MONSOUR**  
(248) 948 0107

[cmonsour@signatureassociates.com](mailto:cmonsour@signatureassociates.com)

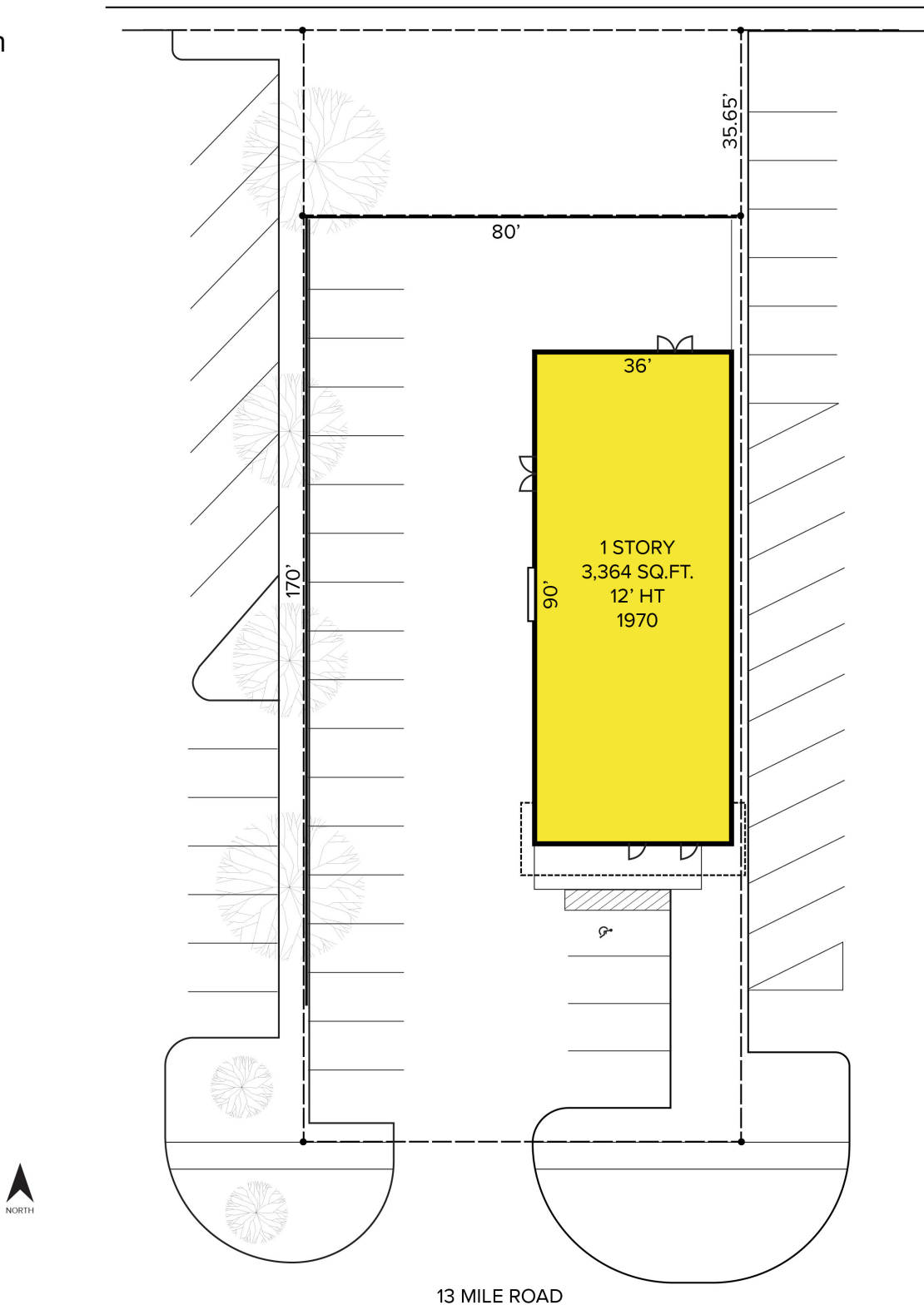
**SIGNATURE ASSOCIATES**  
One Towne Square, Suite 1200  
Southfield, MI 48076  
[www.signatureassociates.com](http://www.signatureassociates.com)

# 11701 E. Thirteen Mile Road – Warren, Michigan

Retail For Sale

3,364  
Square Feet  
AVAILABLE

## Site Plan



For more information, please contact:

**JOE STACK**  
(248) 359 0615

[jstack@signatureassociates.com](mailto:jstack@signatureassociates.com)

**CHRIS MONSOUR**  
(248) 948 0107

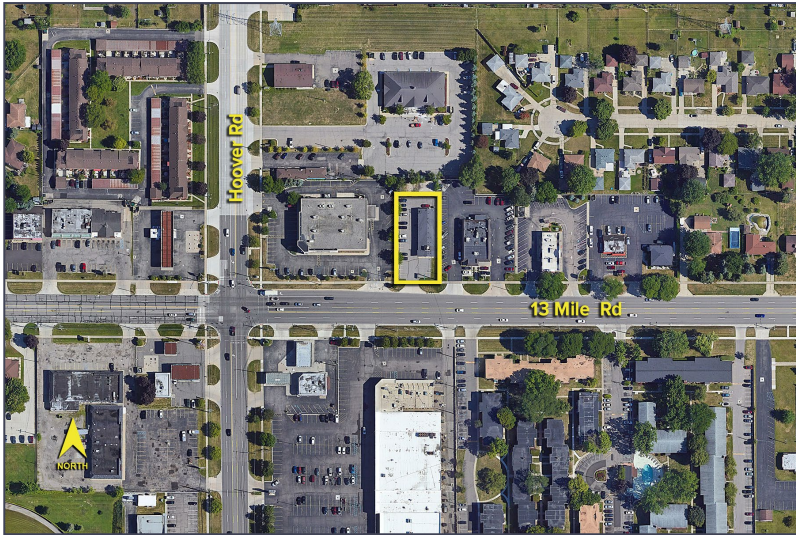
[cmonsour@signatureassociates.com](mailto:cmonsour@signatureassociates.com)

**SIGNATURE ASSOCIATES**  
One Towne Square, Suite 1200  
Southfield, MI 48076  
[www.signatureassociates.com](http://www.signatureassociates.com)

# 11701 E. Thirteen Mile Road – Warren, Michigan

## Retail For Sale

3,364  
Square Feet  
AVAILABLE



### DEMOGRAPHICS

	POPULATION	MED. HH INCOME
1 MILE	15,374	\$79,945
3 MILE	105,745	\$70,363
5 MILE	312,760	\$65,297

### TRAFFIC COUNTS (TWO-WAY)

35,148	13 Mile Rd. E of Hoover Rd.
35,544	13 Mile Rd. W of Hoover Rd.
36,367	Hoover Rd. S. of 13 Mile Rd.
29,456	Hoover Rd. N. of 13 Mile Rd.



For more information, please contact:

**JOE STACK**  
(248) 359 0615  
jstack@signatureassociates.com

**CHRIS MONSOUR**  
(248) 948 0107  
cmonsour@signatureassociates.com

**SIGNATURE ASSOCIATES**  
One Towne Square, Suite 1200  
Southfield, MI 48076  
www.signatureassociates.com