

250-252 Chaddick Drive, Wheeling, IL

15,662 SF Available



6B TAX REDUCTION IN PLACE

FOR SALE: Hard to Find Free Standing Building

AVAILABLE: +/- 15,662 SF

LAND: 1.14 Acres

OFFICE: 3,500 SF

BUILT: 1989

CAR PARKING: 29 Spaces

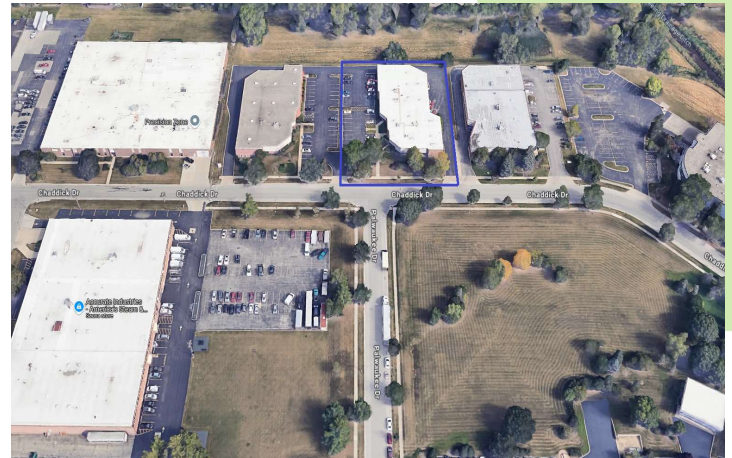
ZONING: I2

LOADING: 2 DID's, 2 Exterior Docks

CEILING: +/- 16' Clear

TAXES: \$2.36 PSF (2023)

FOR SALE: \$1,849,995



- Single or Two Tenant Building (Separately Metered)
- Newer Roof
- Office Remodeled
- Previous Uses Include Roofing Company and Auto Sales



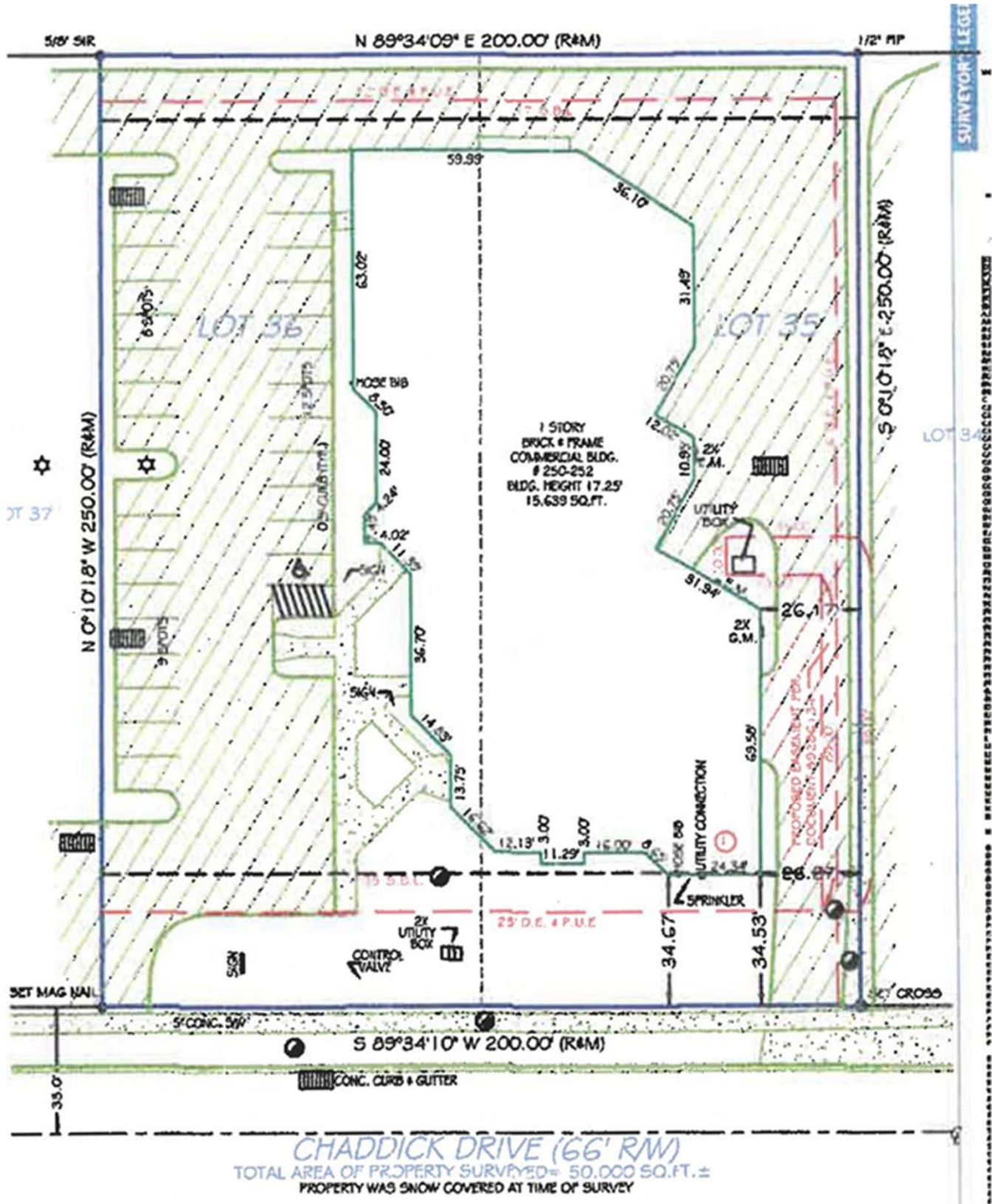
SCAN FOR LISTING



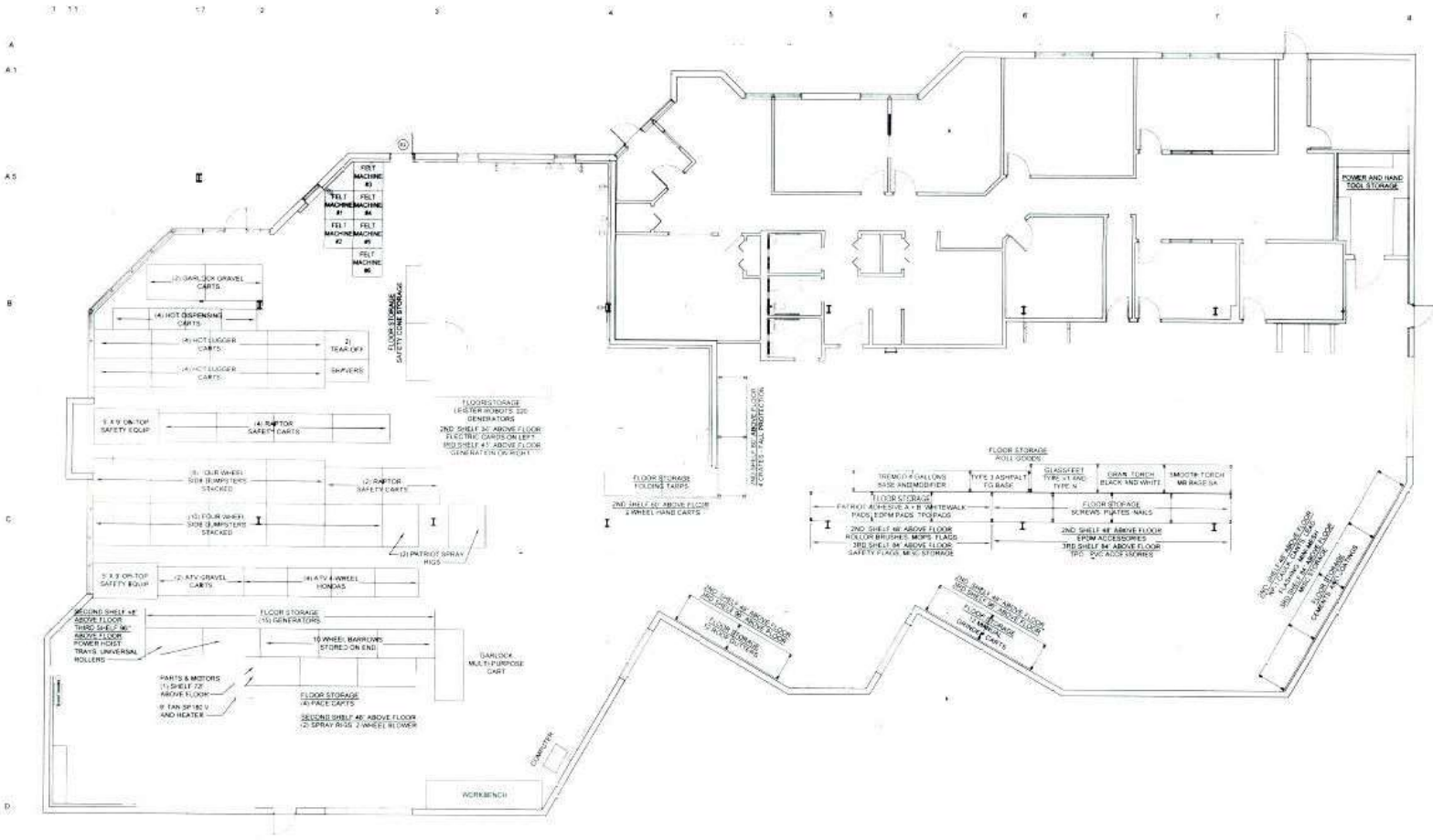
ENTRE
Commercial Realty LLC

Brian Bocci, SIOR
847-310-4296
bbocci@entreccommercial.com

SITE PLAN



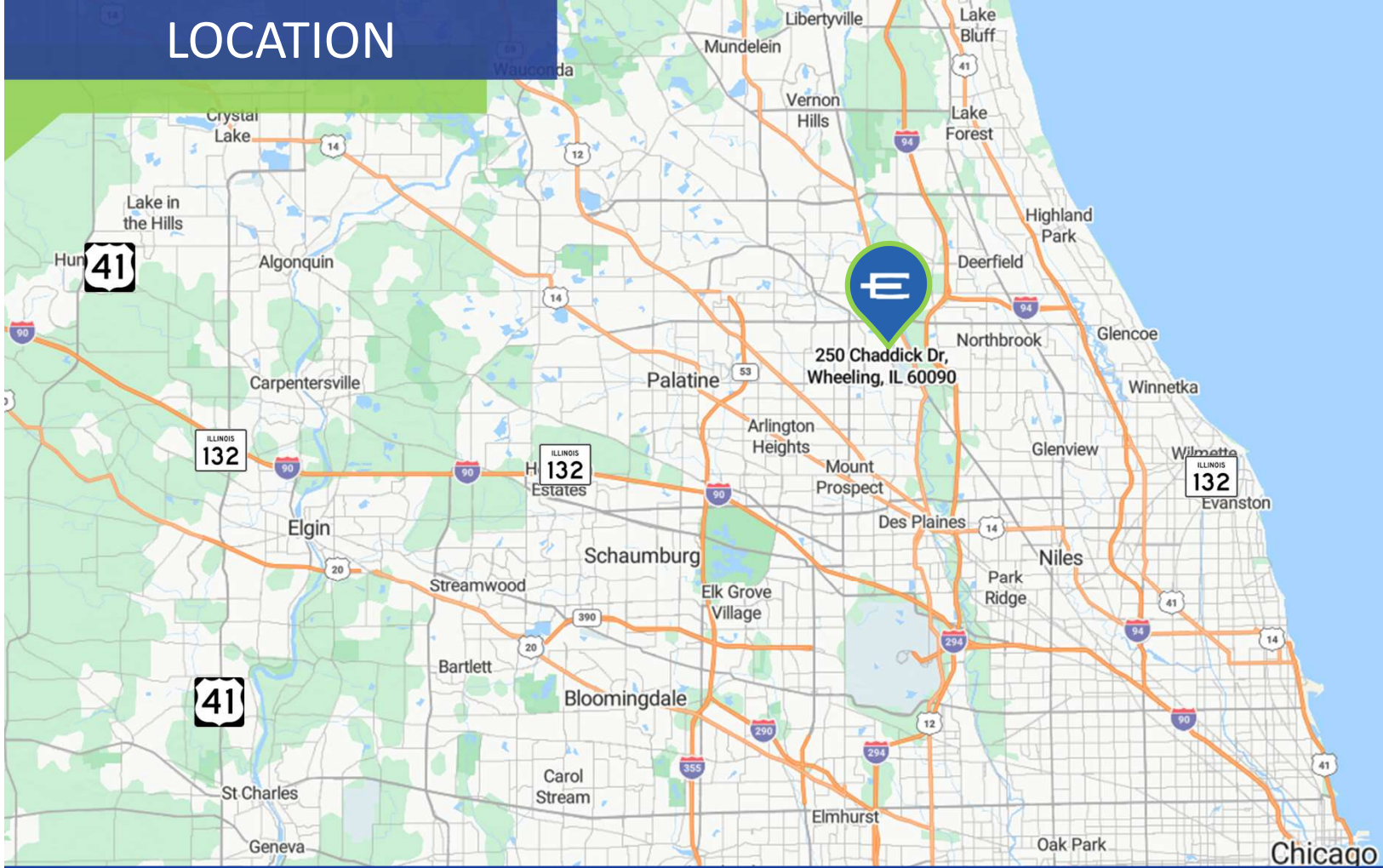
FLOOR PLAN



PHOTOS



LOCATION



250-252 Chaddick Drive, Wheeling

Amenities

Childcare, Hotels, Recreation, Restaurants, Retail

Brian Bocci, SIOR

847-310-4296

bbocci@entrecommercial.com