

WESTSIDE MEDICAL ARTS

350 NW 84th Ave
Plantation, FL 33324

Medical Office
For Lease

3,686 SF



Leasing Information:
954.547.0335

Matthew Poncy **Brian Wilcox**
954.547.0335 321.663.3953
mponcy@lpc.com bwilcox@lpc.com

Lincoln

Lincoln Property Company
1800 S Australian Ave, Suite 102
West Palm Beach, FL 33409

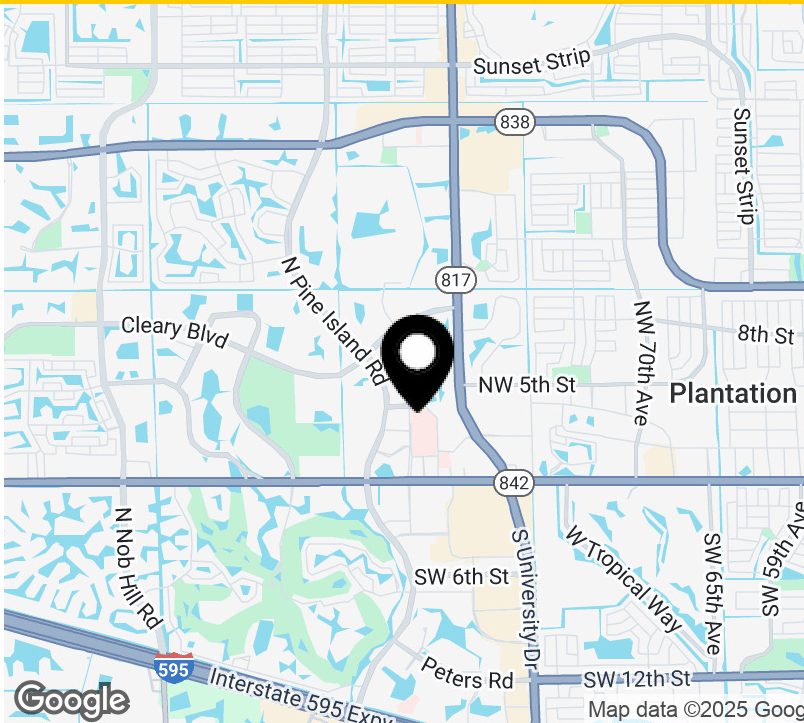
www.lpc.com

WESTSIDE MEDICAL ARTS

350 NW 84th Ave | Plantation, FL 33324

Medical Office For Lease

3,686 SF



Offering Summary

Lease Rate:	\$28.00 SF/yr (NNN)
Building Size:	49,014 SF
Available SF:	3,686 SF
Year Built:	2001

Property Overview

Move-in ready medical office. Plumbed exams, 3 restrooms, office, reception, and waiting room. Suite is conveniently located near the elevator offering ease of access for patients. Ample on-site parking and patient drop off area.

Availabilities	SF	Lease Rate	Date Available
Suite 202	3,686 SF	\$28.00 NNN	Available

Property Highlights

- Convenient location on HCA FL Westside Hospital Campus
- Patient drop off
- Move-in ready
- Ample on-site parking



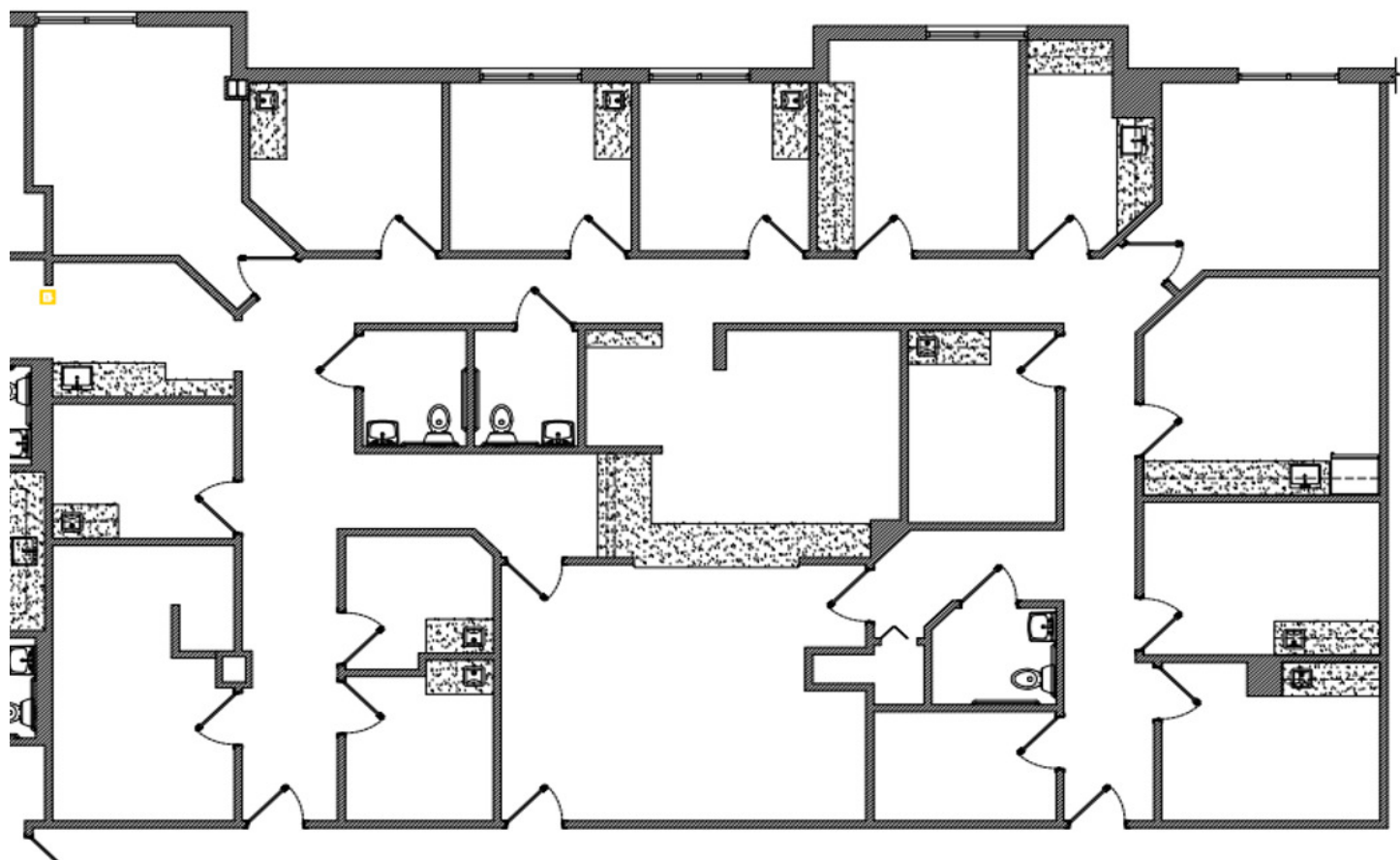
Matthew Poncy **Brian Wilcox**
954.547.0335 321.663.3953
mponcy@lpc.com bwilcox@lpc.com

Lincoln

WESTSIDE MEDICAL ARTS

350 NW 84th Ave | Plantation, FL 33324

Suite 202
3,686 SF



Suite	Size	Lease Rate	Description
Suite 202	3,686 SF	\$28.00 NNN	Available

Matthew Poncy

954.547.0335
mponcy@lpc.com

Brian Wilcox

321.663.3953
bwilcox@lpc.com

Lincoln



WESTSIDE MEDICAL ARTS

350 NW 84th Ave
Plantation, FL 33324

Leasing Information:
954.547.0335

Matthew Poncy
954.547.0335
mponcy@lpc.com

Brian Wilcox
321.663.3953
bwilcox@lpc.com

Lincoln

Lincoln Property Company
1800 S Australian Ave, Suite 102 West Palm
Beach, FL 33409

www.lpc.com