

SALE

PRIME RETAIL/MULTI-FAMILY ACREAGE

Martin Luther King Junior Avenue South Salisbury, NC 28144



PROPERTY DESCRIPTION

Approximately 3.63+/- acres of prime retail/multi-family zoned land in thriving Salisbury. Ideally situated on the corner of S MLK Jr Avenue and Mooresville Road, zoning allows for a range of uses including restaurant, general retail, office and multi-family. Location and corner parcel allows for ease of access, multiple points of entry, visibility and close proximity to US-29 and I-85.

PROPERTY HIGHLIGHTS

- Approximately 3.63+/- acres
- CMX zoning (Salisbury)
- Ideal for restaurant, general retail, office and multi-family
- Undeveloped Land
- Parcel IDs: 017-007, 017-193

OFFERING SUMMARY

Sale Price:	\$197,000
Lot Size:	3.63 Acres

DEMOGRAPHICS	0.3 MILES	0.5 MILES	1 MILE
Total Households	127	621	2,440
Total Population	331	1,505	5,725
Average HH Income	\$46,872	\$57,640	\$60,199

Ryan Pilsy
(980) 339-9174



COLDWELL BANKER
COMMERCIAL
REALTY

SALE

MARTIN LUTHER KING JUNIOR AVENUE SOUTH

Martin Luther King Junior Avenue South Salisbury, NC 28144



Ryan Pilsy
(980) 339-9174



COLDWELL BANKER
COMMERCIAL
REALTY

SALE

MARTIN LUTHER KING JUNIOR AVENUE SOUTH

Martin Luther King Junior Avenue South Salisbury, NC 28144



Ryan Pilsy
(980) 339-9174

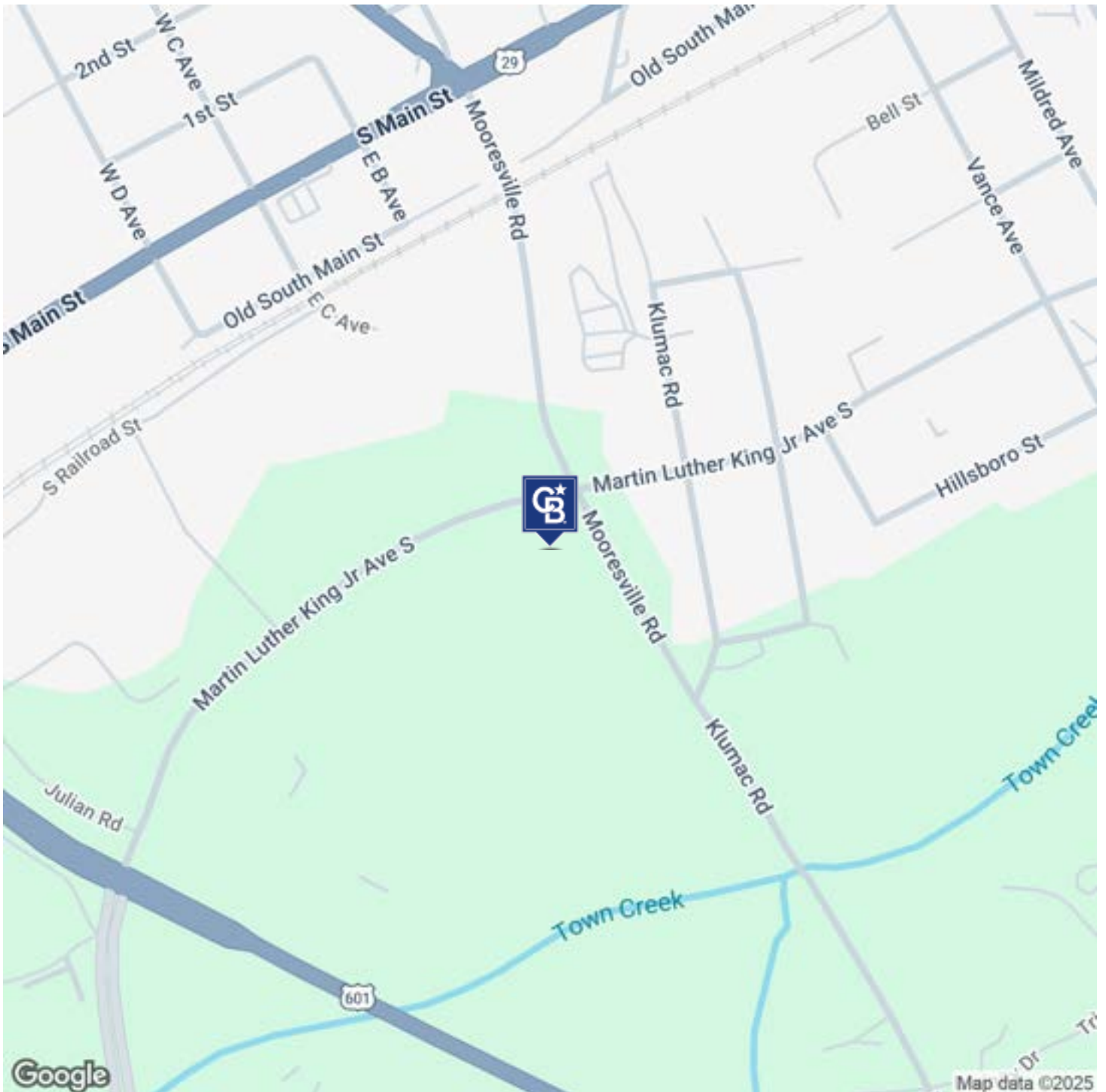


COLDWELL BANKER
COMMERCIAL
REALTY

SALE

MARTIN LUTHER KING JUNIOR AVENUE SOUTH

Martin Luther King Junior Avenue South Salisbury, NC 28144



Ryan Pilsy
(980) 339-9174

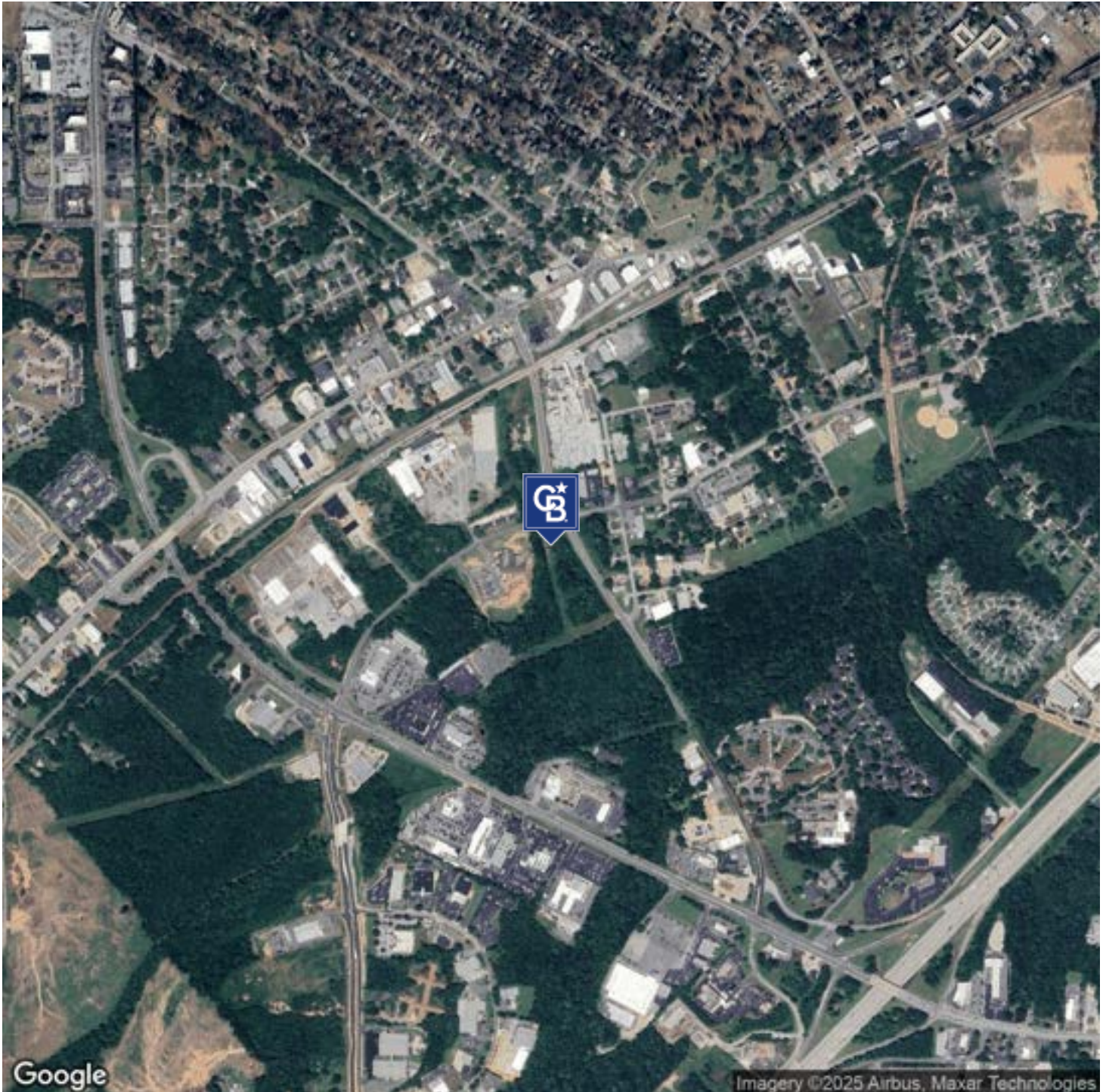


COLDWELL BANKER
COMMERCIAL
REALTY

SALE

MARTIN LUTHER KING JUNIOR AVENUE SOUTH

Martin Luther King Junior Avenue South Salisbury, NC 28144



Ryan Pilsy
(980) 339-9174

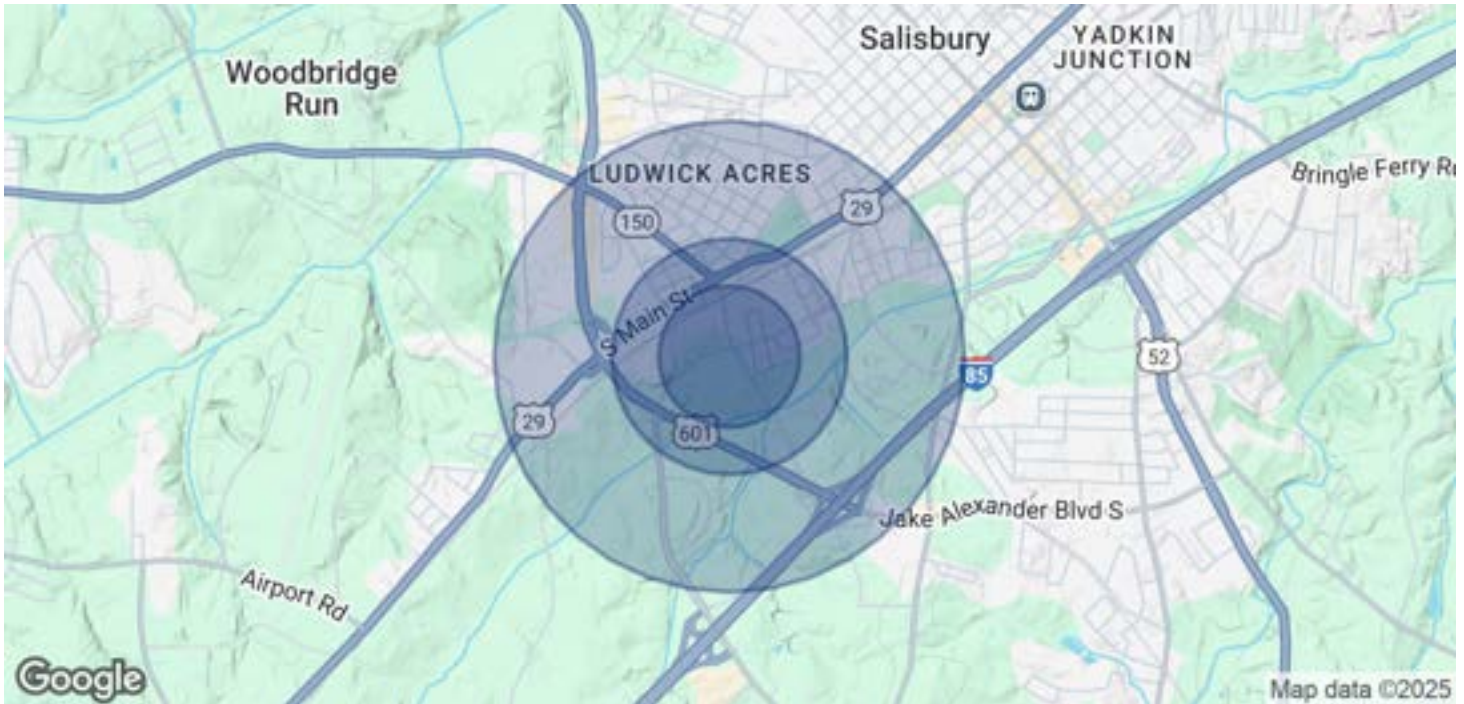


COLDWELL BANKER
COMMERCIAL
REALTY

SALE

MARTIN LUTHER KING JUNIOR AVENUE SOUTH

Martin Luther King Junior Avenue South Salisbury, NC 28144



POPULATION

	0.3 MILES	0.5 MILES	1 MILE
Total Population	331	1,505	5,725
Average Age	38	41	41
Average Age (Male)	35	38	39
Average Age (Female)	41	43	43

HOUSEHOLDS & INCOME

	0.3 MILES	0.5 MILES	1 MILE
Total Households	127	621	2,440
# of Persons per HH	2.6	2.4	2.3
Average HH Income	\$46,872	\$57,640	\$60,199
Average House Value	\$187,660	\$243,786	\$263,667

Demographics data derived from AlphaMap

Ryan Pilsy
(980) 339-9174



COLDWELL BANKER
COMMERCIAL
REALTY