

1621

BROADWAY

BETWEEN ELDERT & COVERT STREETS
BUSHWICK



1621

BROADWAY

BETWEEN ELDERT & COVERT STREETS
BUSHWICK

SIZE:

Ground Floor 3,000 SF
Selling Basement 6,000 SF

FRONTAGE: 100'+

CEILING HEIGHT: 12'

POSSESSION: Arranged

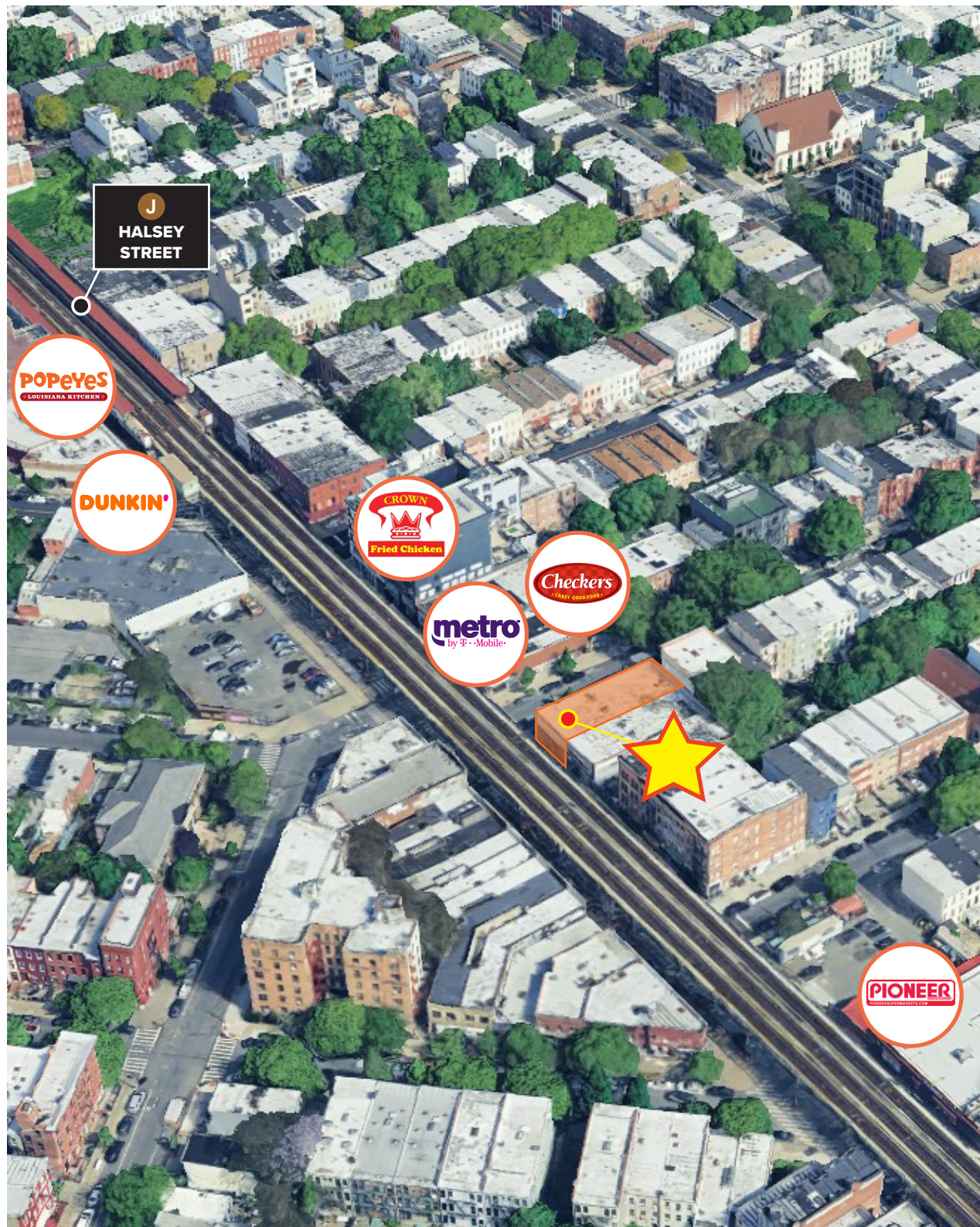
ASKING PRICE: Upon Request

HIGHLIGHTS:

- Prime Bushwick corner retail
- Formerly *Rainbow*
- High foot & vehicle traffic area
- Dense residential neighborhood

NEIGHBORS:

Checkers, Pioneer Supermarket, Metro by T-Mobile, Crown Fried Chicken, Dunkin', Popeyes, Western Union, & many more!

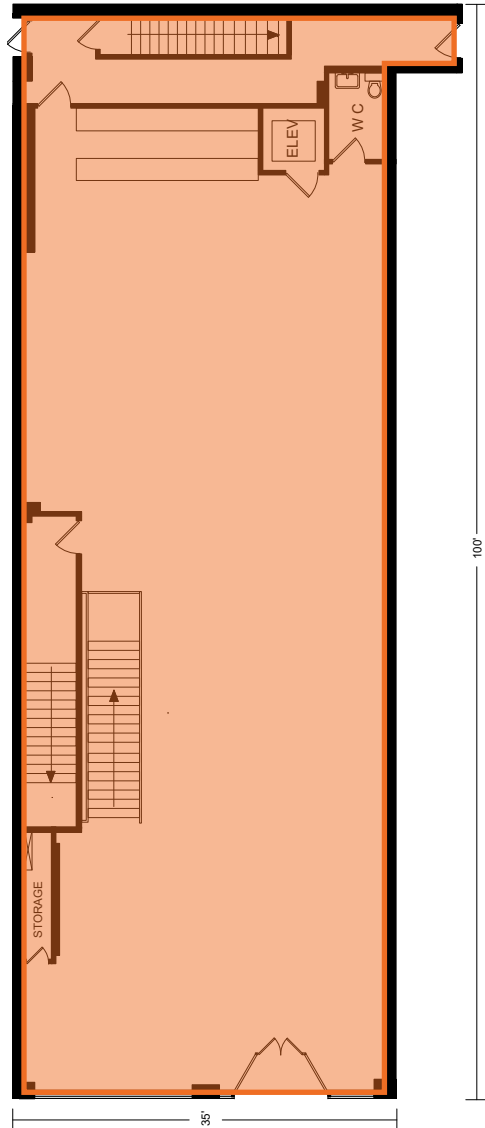


All information supplied in this marketing presentation and/or flyer is from sources deemed reliable and is furnished subject to errors, omissions, modifications, removal of listings from sale/lease and to any listing condition. Any square footage, dimensions, floor plans and/or technical data set forth are approximations and are subject to further elaboration/confirmation.

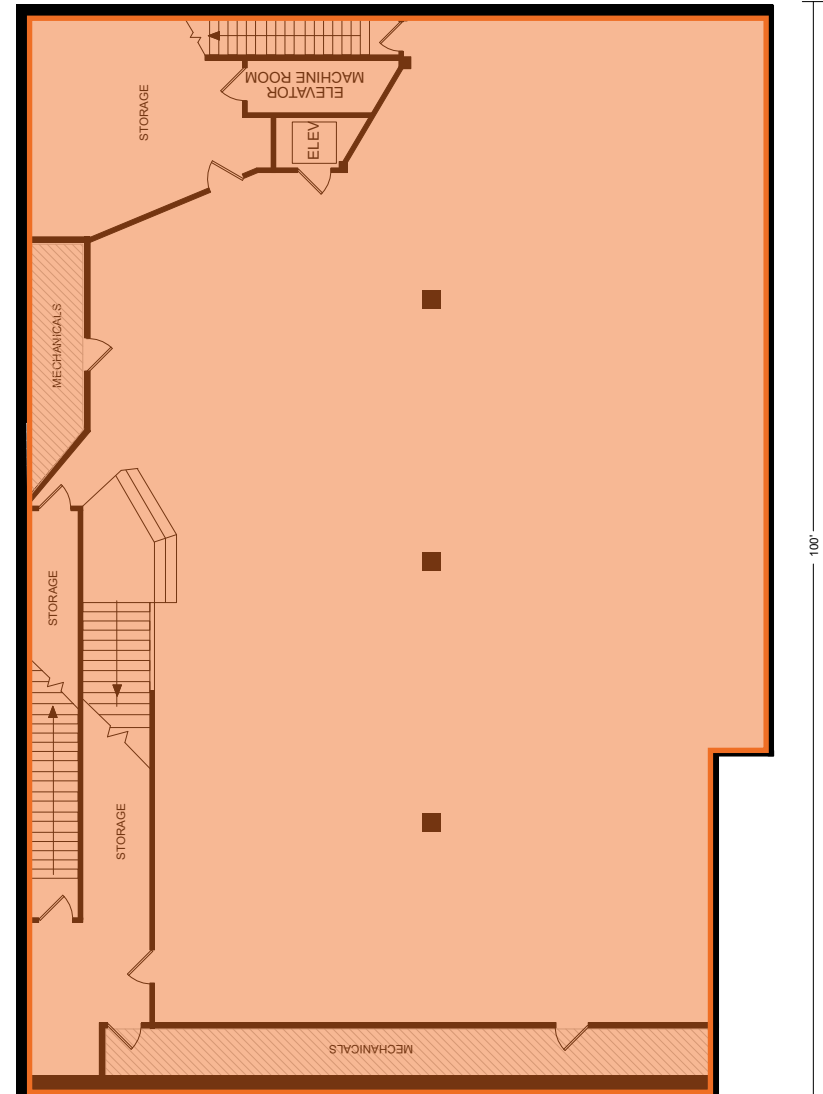
1621

BROADWAY

Floor Plans:
Ground Floor - 3,000 SF



Selling Basement - 6,000 SF



1621

BROADWAY

Interiors:



All information supplied in this marketing presentation and/or flyer is from sources deemed reliable and is furnished subject to errors, omissions, modifications, removal of listings from sale/lease and to any listing condition. Any square footage, dimensions, floor plans and/or technical data set forth are approximations and are subject to further elaboration/confirmation.

1621

BROADWAY
BETWEEN ELDERT & COVERT STREETS
BUSHWICK

FOR MORE INFORMATION,
PLEASE CONTACT:

MILES SABBAGH

646.894.3176 | MSabbagh@ksrny.com

MARC SITT

917.757.8863 | MSitt@ksrny.com

