



FOR LEASE

Great location in the University District

Retail/Deli Space
\$14.00 sf NNN

Easy Access to I-90
On Bus Route

417 E 3RD

DTU Zoning
Parcel # 35202.2609

+/- 2,428 SF

CONTACT

US NOW



Doug Byrd 509.216.6575
Sharon Reynolds 509.326.8080



Doug@ByrdRealEstateGroup.com
Sharon@ByrdRealEstateGroup.com

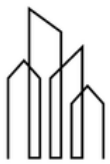


1912 N Division, Ste 201
Spokane WA 99207

- CURRENT DELI USE
- AVAILABLE JUNE 1, 2025
- GREAT NATURAL LIGHT
- ADA ACCESSIBLE
- POLE SIGN AVAILABLE
- +/-7,539 SF LOT
- KITCHEN EQUIPMENT DOES NOT STAY/PURCHASE MAY BE NEGOTIATED

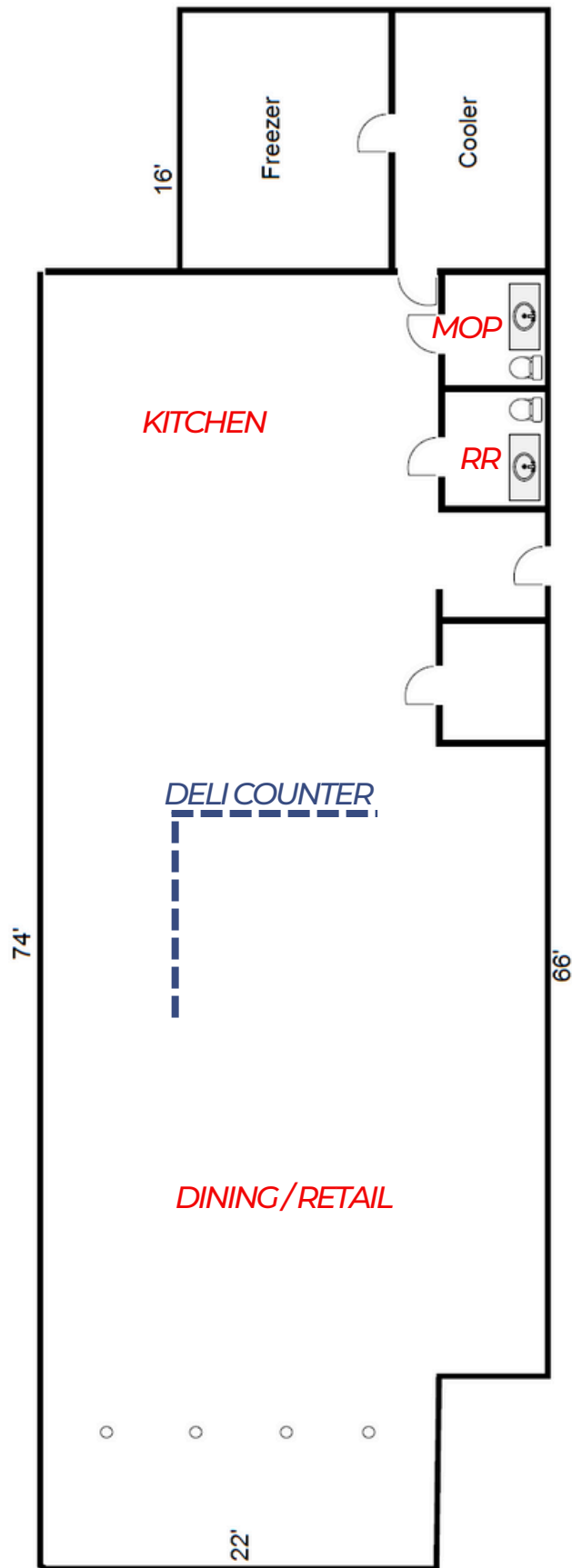
www.ByrdRealEstateGroup.com

PRODUCING PROPERTY SOLUTIONS



BYRD
REAL ESTATE
GROUP

417 E 3RD



CONTACT

US NOW



Doug Byrd 509.216.6575
Sharon Reynolds 509.326.8080



Doug@ByrdRealEstateGroup.com
Sharon@ByrdRealEstateGroup.com



1912 N Division, Ste 201
Spokane WA 99207

www.ByrdRealEstateGroup.com

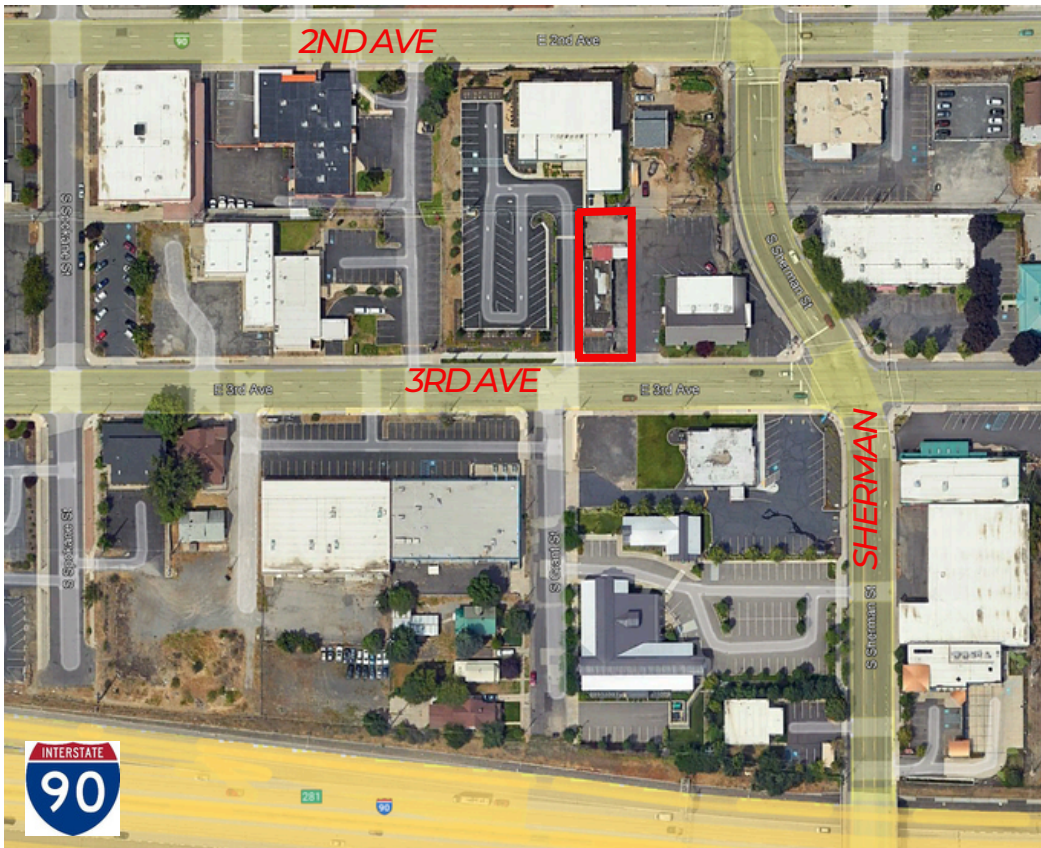
PRODUCING PROPERTY SOLUTIONS

All information is furnished by the Owner &/or Broker and believed to be complete and correct. The Owner &/or Broker cannot be responsible for changes, errors, omissions or withdrawals of this offering. The above information is from sources deemed reliable but should be verified by parties that could be adversely affected by any statements or information. This is not an offering of sub-agency, with commission splits to be determined.



BYRD
REAL ESTATE
GROUP

417 E 3RD



CONTACT

US NOW



Doug Byrd
509.216.6575
Sharon Reynolds
509.326.8080



Doug@ByrdRealEstateGroup.com
Sharon@ByrdRealEstateGroup.com



1912 N Division, Ste 201
Spokane WA 99207

www.ByrdRealEstateGroup.com

PRODUCING PROPERTY SOLUTIONS

All information is furnished by the Owner &/or Broker and believed to be complete and correct. The Owner &/or Broker cannot be responsible for changes, errors, omissions or withdrawals of this offering. The above information is from sources deemed reliable but should be verified by parties that could be adversely affected by any statements or information. This is not an offering of sub-agency, with commission splits to be determined.