

FOR LEASE

# STATELINE 95

HARDEEVILLE COMMERCE PARK

Hardeeville, SC 29927

AVAILABLE  
NOW:

268,136 SF

CLASS-A REAR LOAD



50,000 TO  
268,136 SF  
AVAILABLE



0.2 MILES TO  
INTERSTATE-95



15 MILES  
TO PORT



DISCRETIONARY  
INCENTIVES  
AVAILABLE



PILOT TAX  
PROGRAM



GTIS PARTNERS

**CBRE**



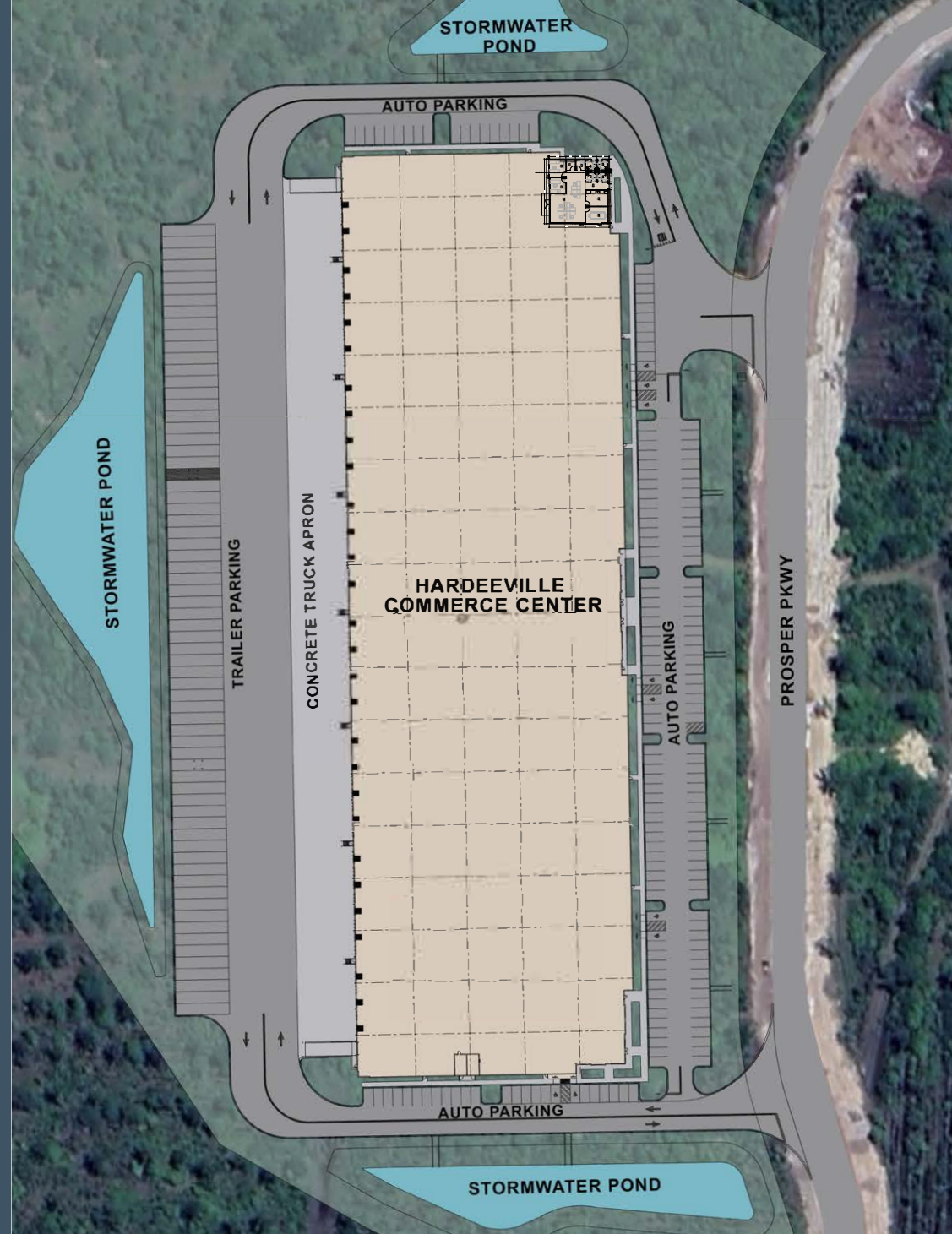
AERIAL



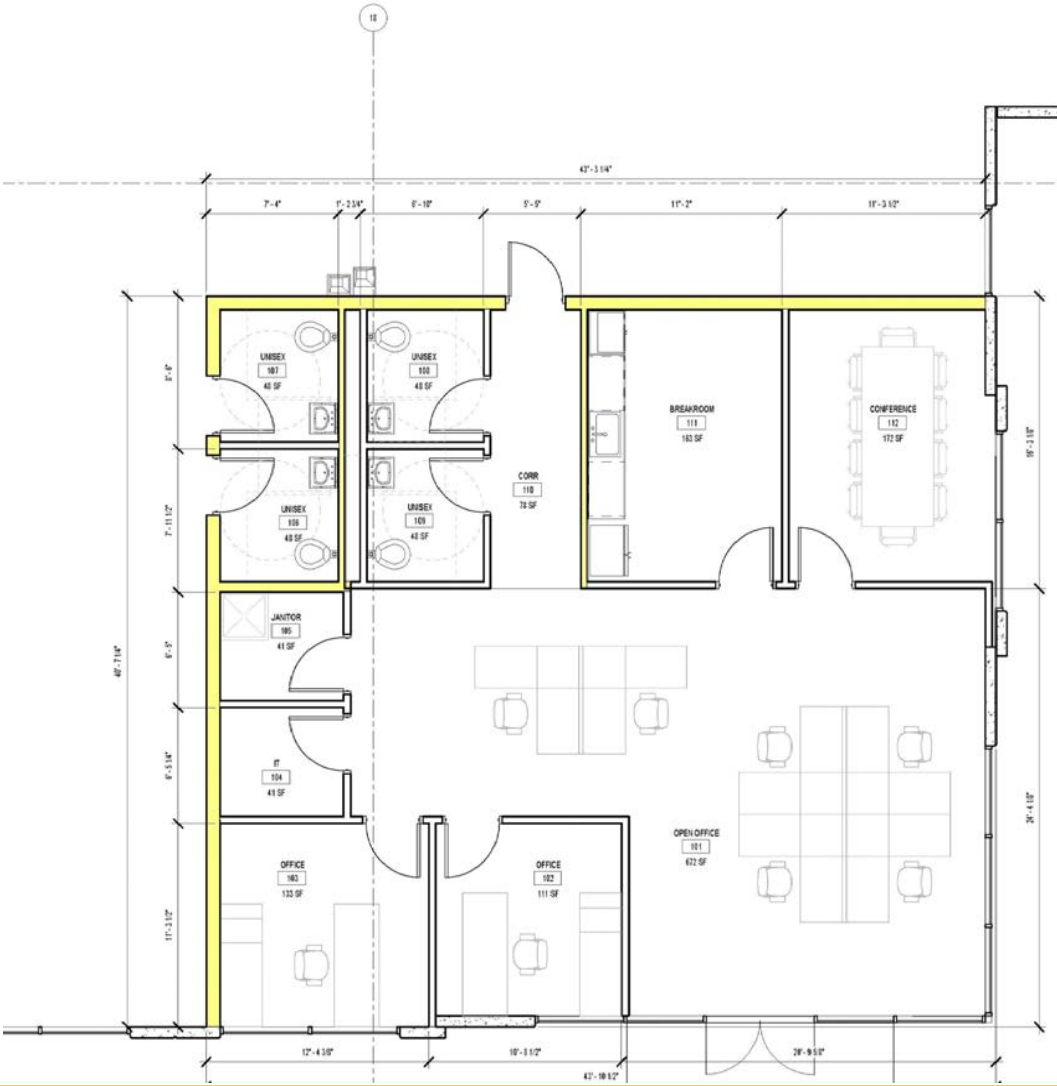


## BUILDING FEATURES

FOOTPRINT:	268,136 SF
BUILDING DIMENSIONS:	952' x 285'
BAY SIZING:	54' x 56' with 54' x 60' speed bay
DOCK POSITIONS:	57
DOCK EQUIPMENT:	(29) 40k lbs pit levelers with brush seals and bumpers
CLEAR HEIGHT:	36'
PARKING:	66 trailer stalls (180 auto)
DRIVE-IN DOORS:	2
LIGHTING:	30 FC
POWER:	2000 amps
SPEC OFFICE:	1,798 SF

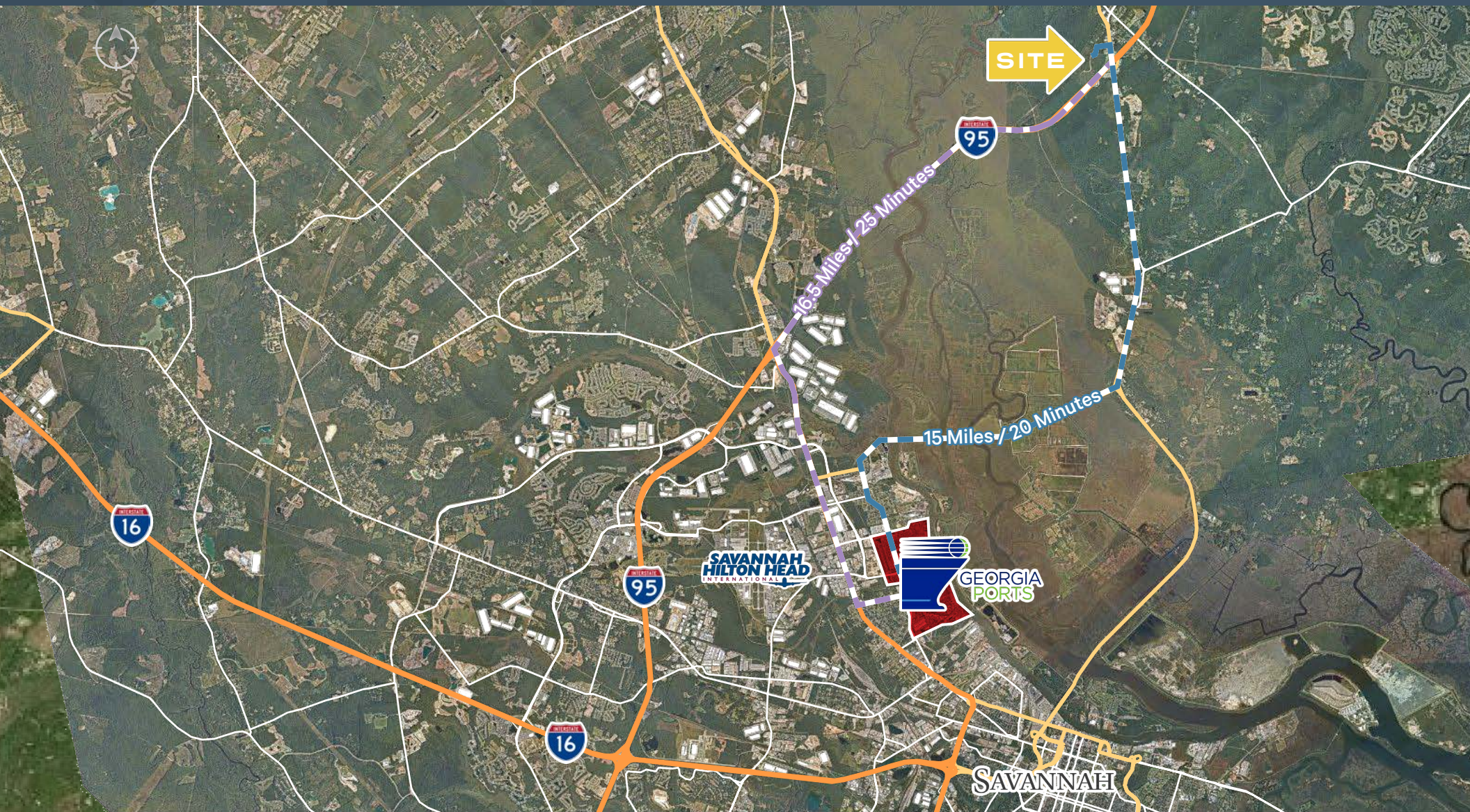


SPEC OFFICE PLAN | ±1,798 SF





## SUPERIOR LOGISTICS LOCATION



» 0.2 miles from  
Interstate-95

» 15 miles to Port of Savannah  
via Highway 17

» 16.5 miles to Port of Savannah  
via Interstate-95

» 18.8 miles to  
Interstate-16



# PORT HIGHLIGHTS

## SAVANNAH: GATEWAY TO AMERICAN COMMERCE

- » 44% of U.S. consumers and manufacturers are best served from the Port of Savannah

## STRATEGIC DISTRIBUTION HUB


- » Multimodal hub fueled by proximity to the Port of Savannah, regional interstate system linking the area to Atlanta and Florida, and Class I rail service from both Norfolk Southern and CSX
- » Located on the I-95 corridor with direct access to the Florida markets, the Carolinas, Eastern seaboard and Atlanta population center via I-16
- » Largest concentration of break bulk import distribution centers on the East coast
- » Home to Fort Stewart, the largest US Army installation east of the Mississippi, which also provides a highly trained labor base as soldiers exit the military and join the civilian labor force
- » Skilled workforce of more than 453,000 within a 60-mile radius, fueled in part by Georgia Southern University, nearby Fort Stewart and Hunter Army Airfield, and other colleges, universities, and industry ecosystems such as aerospace

## PORT OF SAVANNAH

- » The third largest container volume and the fastest-growing container port by TEU's in the U.S
- » The Port's Garden City Terminal is the largest single container terminal in North America
- » The Terminal covers 1,345 acres with 9,693 ft of contiguous berthing space and 36 ship-to-shore cranes with 42 additional Neo-Panamax cranes expected by 2028. The facility will be able to move nearly 1,300 containers per hour assuming all cranes are moving, and 14,000 truck moves daily. (7,000 containers in, 7,000 containers out)
- » The \$1.4 billion Savannah Harbor Expansion Project (SHEP) has recently deepened its navigation channel from 42 feet to 47 feet, enabling larger and heavier vessels to call on the port
- » Rail connectivity to every major destination east of the Mississippi via two Class I railroads, Norfolk Southern and CSX Transportation
- » The Mason Mega Rail Project is now complete and operates as the largest on-dock intermodal rail facility for a port authority in North America, doubling the Port of Savannah's rail lift capacity to 1 million TEU's per year
- » The Port of Savannah ended fiscal year 2022 in June with a record breaking 5.76 million TEU's, an 8% increase over fiscal year 2021:
  - 1.5M TEU's in Q1 FY 2023 (July-September) an increase of 9.6% year over year
  - Garden City Terminal West Project will add another 1M TEU's of container yard capacity in phases during 2023 and 2024
  - Capacity will increase by 60% to 9.5M TEU's by 2025



# SOUTH CAROLINA BUSINESS ENVIRONMENT

- 
- An aerial photograph of a large cable-stayed bridge spanning a wide river. Two large cargo ships are docked at the riverbank. The bridge has multiple tall pylons and numerous stay cables. The surrounding area includes industrial facilities and some residential buildings.
- » Strong FILOT (Fee in lieu of taxes) property tax abatement program in place. This allows to understand total occupancy costs with the peace of mind that property taxes won't change during occupancy.
  - » Jasper County, SC is a Tier III County which provides a Jobs Tax Credit of \$21,250 per new job created
  - » South Carolina has one of the lowest corporate income tax rates (5%) in the Southeast along with numerous credits and methods to reduce and eliminate corporate income tax liability
  - » The project is located within Foreign-Trade Zone 104. This lowers the costs of U.S. based operations engaged in international trade thus providing a secure, efficient, and profitable way to compete effectively in domestic and global markets
  - » Like Georgia's effective Quick Start workforce training program, South Carolina has ReadySC as their platform which creates incredible opportunities for new and expanding companies
  - » Opportunity to pull from the labor pool of Jasper County, shortening the commutes of those travelling to Savannah for employment. There is also a strong military presence due to the proximity of MCAS Beaufort and Parris Island, which together transition around 2,000 soldiers into the civilian workforce annually



**FOR LEASE**

# **STATELINE 95**

**HARDEEVILLE COMMERCE PARK**

Hardeeville, SC 29927



**FOR MORE INFORMATION, PLEASE CONTACT:**

**Preston Andrews**  
First Vice President  
+1 912 484 1510  
[preston.andrews@cbre.com](mailto:preston.andrews@cbre.com)

**William Lattimore, SIOR**  
Executive Vice President  
+1 912 596 7019  
[william.lattimore@cbre.com](mailto:william.lattimore@cbre.com)

**CBRE, Inc.**  
144 Habersham Street, Savannah, GA 31401  
+1 912 228 3528  
[www.cbre.com/savannah](http://www.cbre.com/savannah)

© 2025 CBRE, Inc. This information has been obtained from sources believed reliable. We have not verified it and make no guarantee, warranty or representation about it. Any projections, opinions, assumptions or estimates used are for example only and do not represent the current or future performance of the property. You and your advisors should conduct a careful, independent investigation of the property to determine to your satisfaction the suitability of the property for your needs. CBRE and the CBRE logo are service marks of CBRE, Inc. and/or its affiliated or related companies in the United States and other countries. All other marks displayed on this document are the property of their respective owners.



GTIS PARTNERS

**CBRE**