

For Lease

CBRE

# 95th Street Shoppes

Endcap Available | 2,300 SF

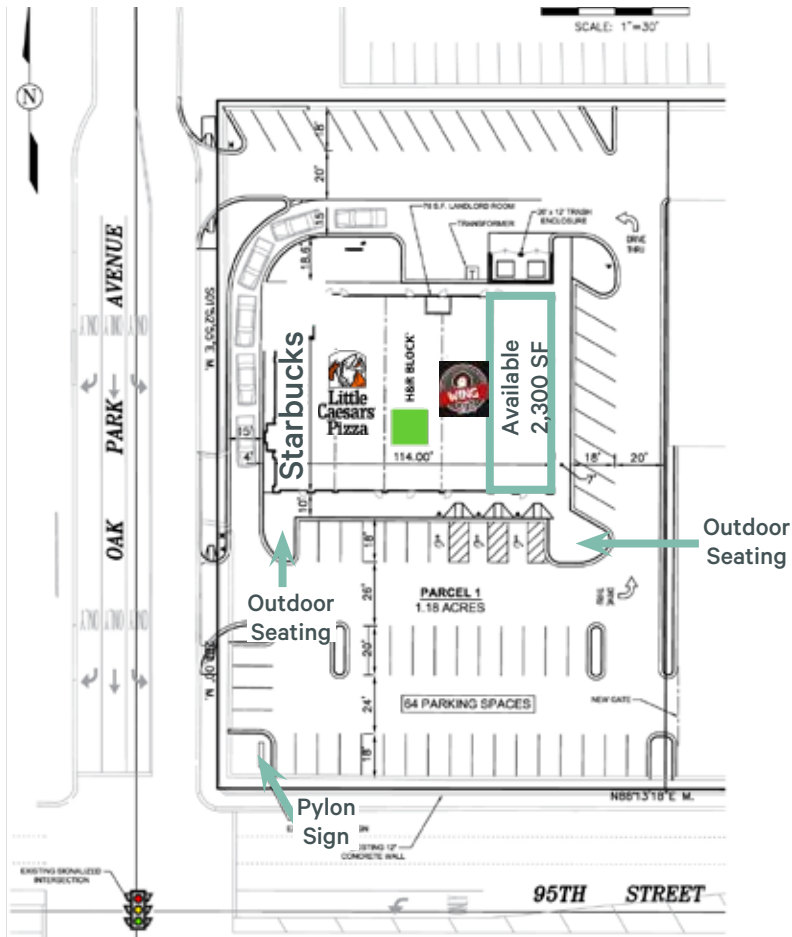
6762 95th Street | Oak Lawn, Illinois 60453 | [www.cbre.com/95thStreetShoppes](http://www.cbre.com/95thStreetShoppes)



## Property Information

- + Over 3.2 million square feet of retail and over 7.8 million square feet of industrial in the immediate trade area
- + Located 1/2 mile east of the full I-294 interchange.
- + Located 1/2 mile west of Chicago Ridge Regional Mall with its 850,000 SF of retail space
- + Join Starbucks, Little Caesars, WingSnob and H&R Block at this location! Positioned at a signalized intersection with High traffic counts along 95th Street.
- + Over 43,000 VPD on 95th Street

Retail



Demographics	1 Mile	2 Mile	3 Mile
Population	15,897	75,900	155,340
Households	5,352	26,979	56,834
Average HH Income	\$76,584	\$87,311	\$92,670
Daytime Population	18,524	70,314	143,234

Traffic Counts	
95th Street	44,300 VPD
Oak Park Ave	5,000 VPD



## Contact Us

Les Kristof  
 Vice President  
 +1 630 573 1282  
 Les.Kristof@cbre.com

© 2025 CBRE, Inc. All rights reserved. This information has been obtained from sources believed reliable but has not been verified for accuracy or completeness. CBRE, Inc. makes no guarantee, representation or warranty and accepts no responsibility or liability as to the accuracy, completeness, or reliability of the information contained herein. You should conduct a careful, independent investigation of the property and verify all information. Any reliance on this information is solely at your own risk. CBRE and the CBRE logo are service marks of CBRE, Inc. All other marks displayed on this document are the property of their respective owners, and the use of such marks does not imply any affiliation with or endorsement of CBRE. Photos herein are the property of their respective owners. Use of these images without the express written consent of the owner is prohibited.