



RETAIL SPACE FOR LEASE

MUNDELEIN MEADOWS (SHADOW ANCHORED BY WALGREENS & ALDI)
781-797 S MIDLOTHIAN ROAD MUNDELEIN, IL

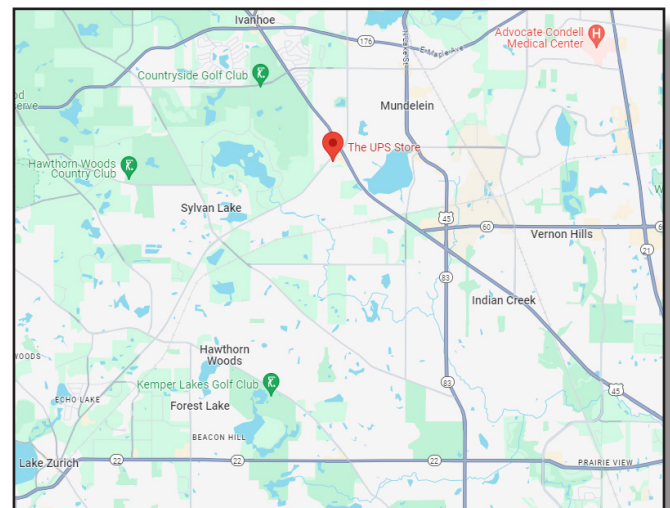


BUILDING FEATURES:

- 1,200 SF Quality Retail Space Available ASAP
- Heavy Traffic counts over 30,000 vehicles per day
- Close proximity to shopping and dining
- Located just South of Rt 60/83 on busy Midlothian Rd
- Shadow Anchored by Aldi & Walgreens
- Over 114,000 consumers in a 5 mile radius
- 24-hour tenant access & tenant controlled HVAC
- Ideal for retail, restaurant, service or office users
- Built in 2000 with excellent curb appeal
- Join tenants: UPS Store, Subway, Cleaners, Aldi, Walgreens, Honeyway, Goodwill, Kindercare & More!!!
- Building Monument sign & tenant signage
- Last Vacant Space in center!!!
- **Rental Rate: \$18.00 psf Net + \$8.00 psf Operating & Taxes= \$26.00 PSF**

AVAILABLE SPACE:

SUITE	SIZE (SF)	Net Rent	Available
787	1,200 SF	\$18.00 Net	ASAP



FOR MORE INFORMATION:

RANDY OLCZYK
Direct: 847.246.9611
randy@chicagolandcommercial.com

TOM CALLAHAN
Direct: 847.246.9636
Tom@chicagolandcommercial.com



Chicagoland
Commercial
REAL ESTATE

4811 Emerson Ave Suite 112, Palatine, IL

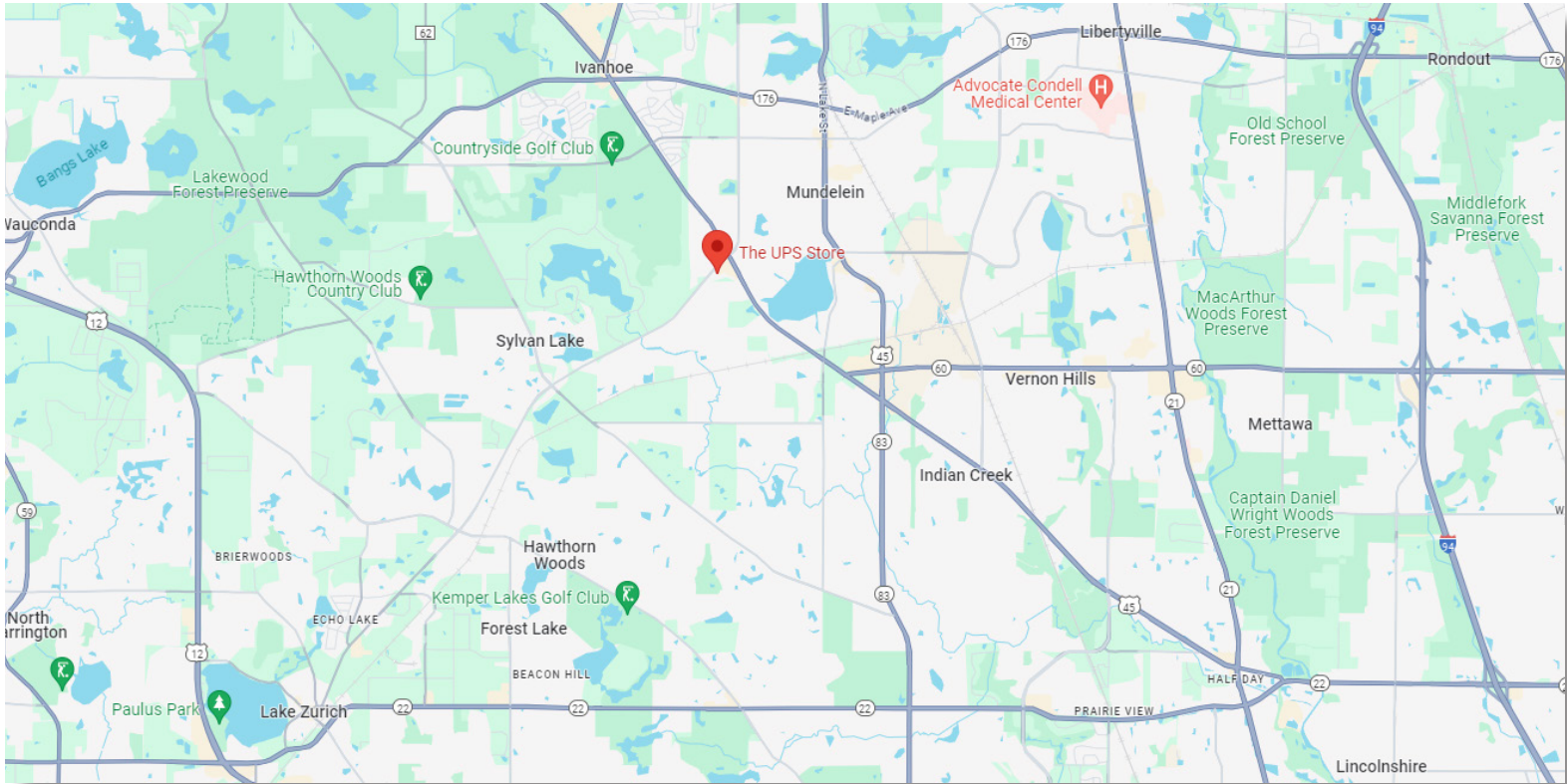


RETAIL SPACE FOR LEASE

MUNDELEIN MEADOWS (SHADOW ANCHORED BY WALGREENS & ALDI)

781-797 S MIDLOTHIAN ROAD MUNDELEIN, IL

AREA MAPS

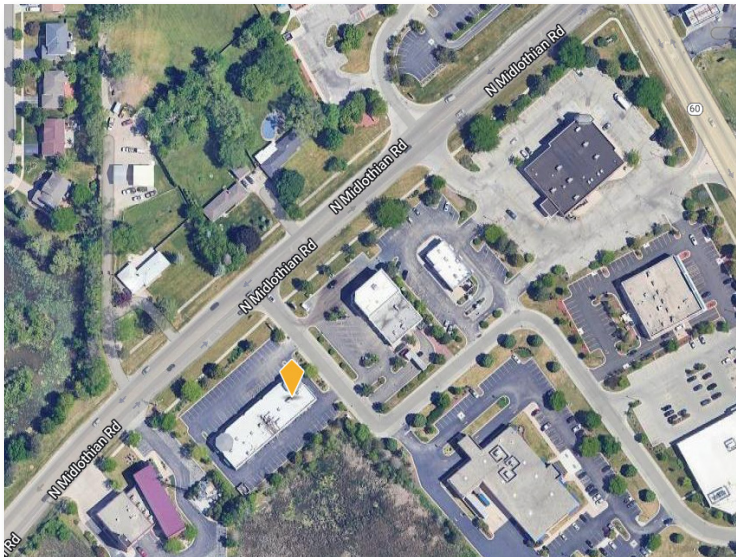




RETAIL SPACE FOR LEASE

MUNDELEIN MEADOWS (SHADOW ANCHORED BY WALGREENS & ALDI)
781-797 S MIDLOTHIAN ROAD MUNDELEIN, IL

BUILDING PHOTOGRAPHS





RETAIL SPACE FOR LEASE

MUNDELEIN MEADOWS (SHADOW ANCHORED BY WALGREENS & ALDI)
781-797 S MIDLOTHIAN ROAD MUNDELEIN, IL

MAP OF NATIONAL TENANTS

