



**AVISON  
YOUNG**

## **Opportunity**

- First floor suites with 961 sf and 2,422 sf available
- Second floor suite with 1,875 sf available
- Centrally located office building with quick access to I-40, I-24, and I-440
- Building overlooks I-40 East between Elm Hill Pike, and Murfreesboro Road
- Aggressive full service rates (less in-suite janitorial)
- After hours key card access

## **Get more information**

**Ben Burns, CCIM**

Vice President

+1 615 727 7432

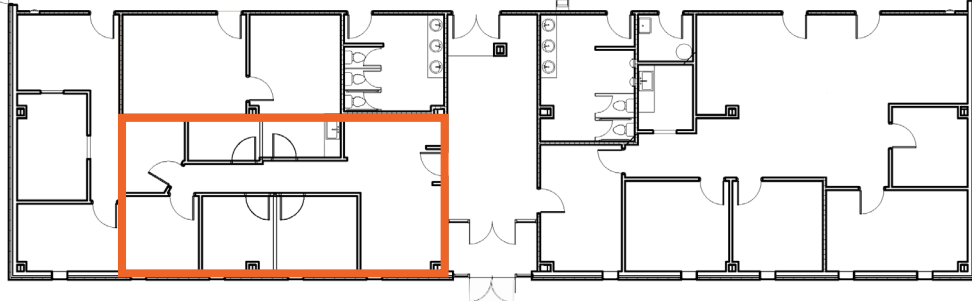
[ben.burns@avisonyoung.com](mailto:ben.burns@avisonyoung.com)

## Floor one

Suite 122  
2,422 sf

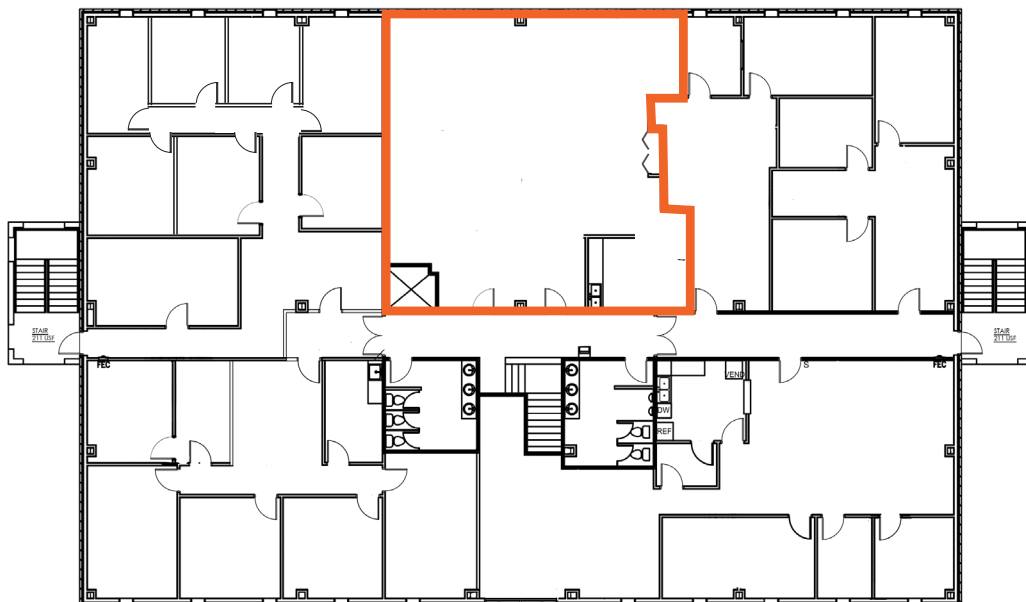


Suite 101  
961 sf



## Floor two

Suite 220  
1,875 sf





## Map

