

# AVAILABLE FOR SUBLEASE

21931 NINE MILE ROAD, SAINT CLAIR SHORES, MI 48080

LOGAN WATCH

248.352.5000 x105

LWatch@firstcommercial.net



## OFFERING SUMMARY

Rental Rate (NNN):	Contact Broker
Number Of Units:	2
Available SF:	4,000 SF
Building Size:	6,000 SF
Year Built:	2000
Zoning:	O1 - Office
Parking Spaces:	48
Parcel Size:	0.73 Acres

## LOCATION OVERVIEW

Former Urgent Care suite available for Sub-lease. The suite is 4,000 SF and was fully renovated in 2022. The suite has 9 exam rooms, 1 procedure room, 1 X-ray room and 3 restrooms.

## DEMOGRAPHICS

	1 MILE	3 MILES	5 MILES
Total Households	7,386	48,624	108,337
Total Population	15,377	114,729	265,053
Average HH Income	\$89,672	\$98,265	\$91,524



FOR SUBLEASE



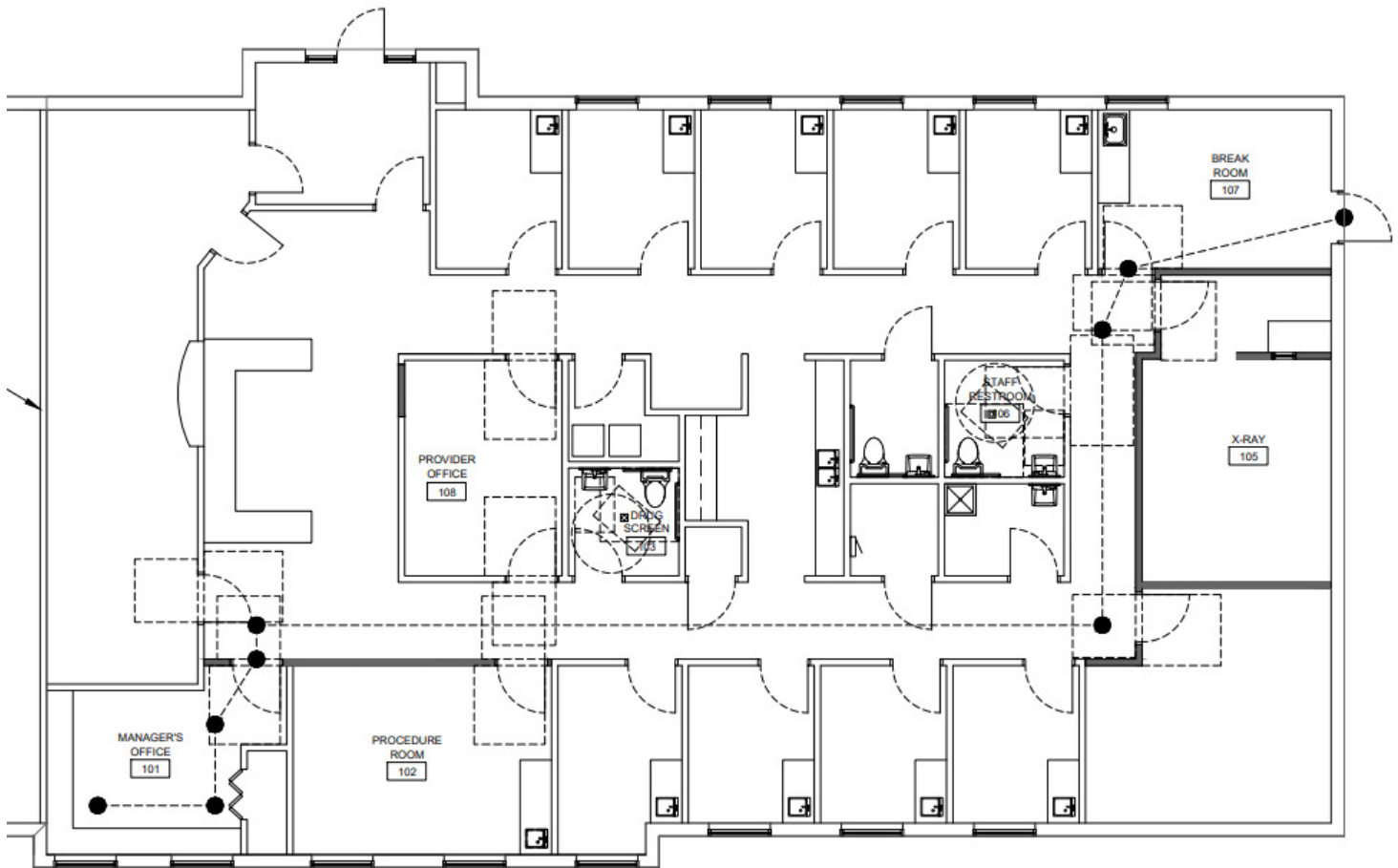
# AVAILABLE FOR SUBLEASE

21931 NINE MILE ROAD, SAINT CLAIR SHORES, MI 48080

LOGAN WATCH

248.352.5000 x105

LWatch@firstcommercial.net



NOTE: ALL ROOMS/CONSTRUCTION IS  
EXISTING UNLESS NOTED OTHERWISE

FOR SUBLEASE





# AVAILABLE FOR SUBLEASE

21931 NINE MILE ROAD, SAINT CLAIR SHORES, MI 48080

LOGAN WATCH

248.352.5000 x105

LWatch@firstcommercial.net



FOR SUBLEASE

**FIRST COMMERCIAL**  
REALTY & DEVELOPMENT COMPANY, INC.



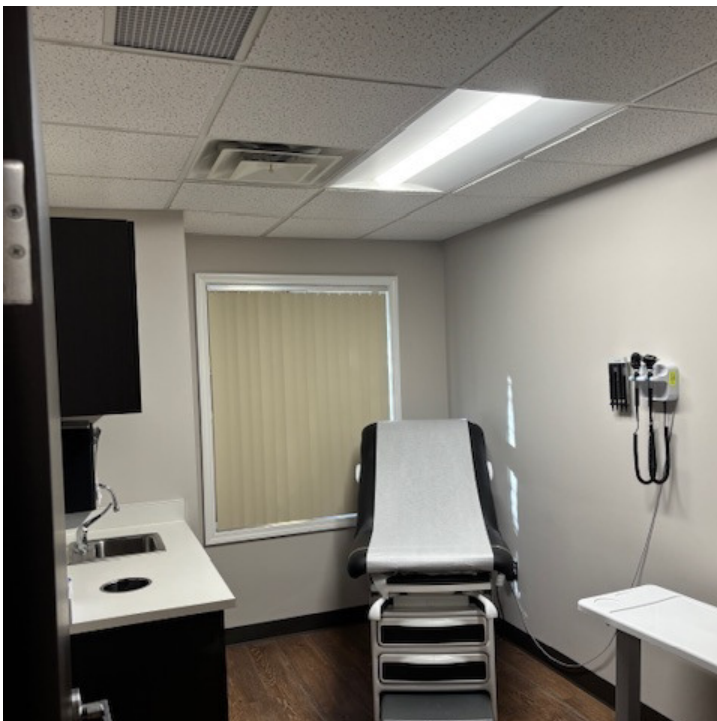
# AVAILABLE FOR SUBLEASE

21931 NINE MILE ROAD, SAINT CLAIR SHORES, MI 48080

LOGAN WATCH

248.352.5000 x105

LWatch@firstcommercial.net



FOR SUBLEASE



# AVAILABLE FOR SUBLEASE

21931 NINE MILE ROAD, SAINT CLAIR SHORES, MI 48080

LOGAN WATCH

248.352.5000 x105

LWatch@firstcommercial.net



FOR SUBLEASE





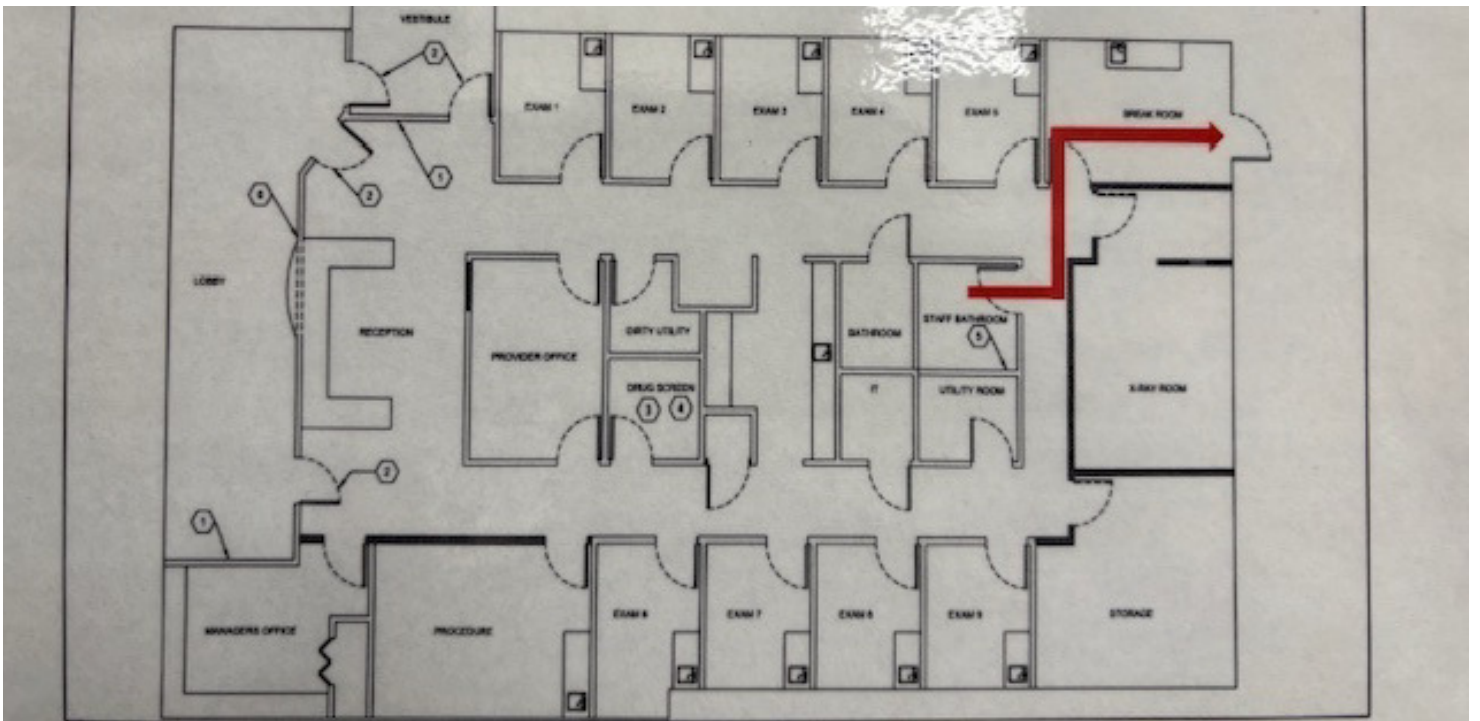
# AVAILABLE FOR SUBLEASE

21931 NINE MILE ROAD, SAINT CLAIR SHORES, MI 48080

LOGAN WATCH

248.352.5000 x105

LWatch@firstcommercial.net



FOR SUBLEASE

